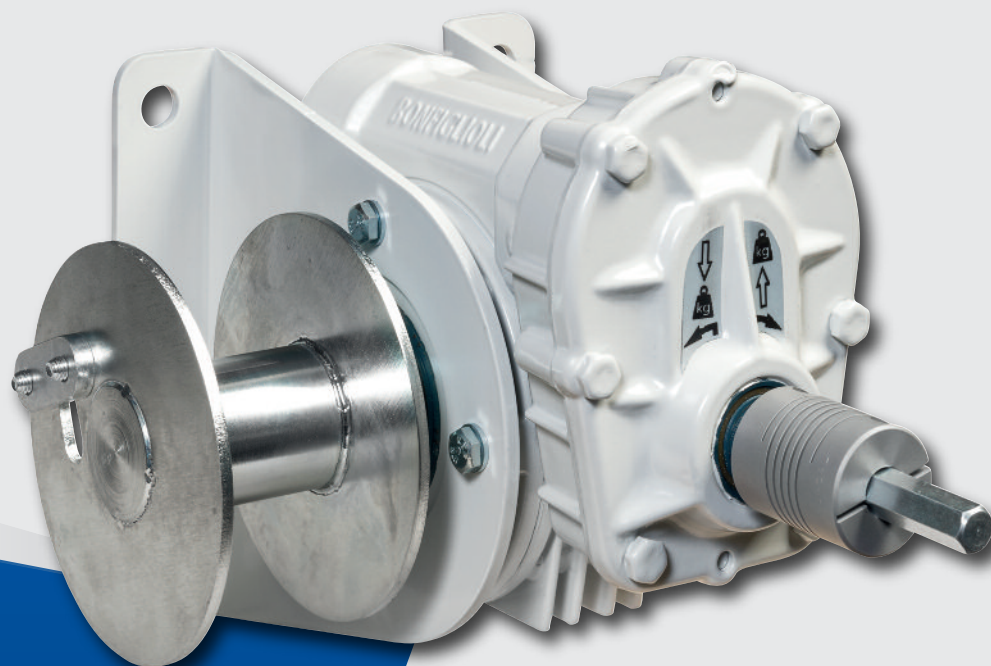


WA200 GR/D



Battery driven worm gear winch

Battery driven worm gear winch:

- robust and safe hoisting winch, for use in combination with a cordless drill
- static safety factor of 4
- flexible coupling attachment for cordless drill
- self braking worm gear system
- suitable for wall or floor (console) fixation
- suitable for short hoisting lengths
- maintenance free aluminum closed gear box
- painted frame, 1 layer (60 - 80 Micron) and zinc-plated finished cable drum
- in compliance with DIN 15020 and the EN13157

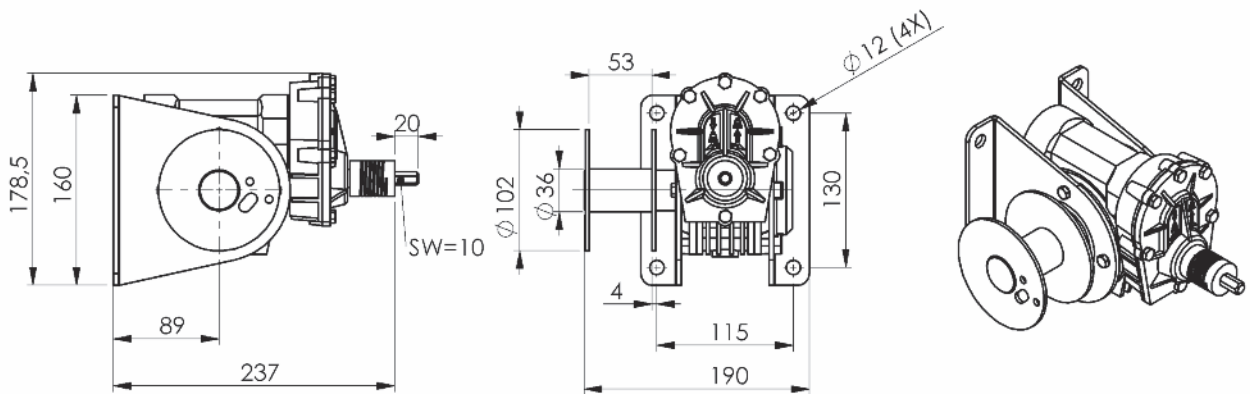


GEBUWIN
metal products

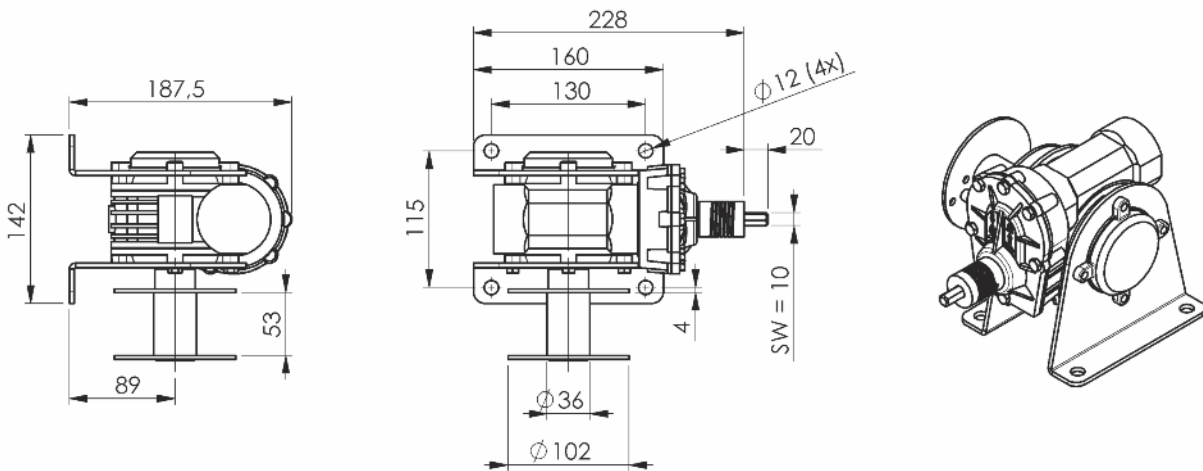


Industrieweg 6 7102 DZ Winterswijk The Netherlands
T +31 (0)543 532600 F +31 (0)543 532601
info@gebuwin.com www.gebuwin.com

Technical specifications WA200 GR/D



Wall version



Floor version

Type	Mounting	Material	Remarks
WA200 GR / D	Floor or Wall 4x M10 class 8.8	Painted finish	RAL 7035 (grey)

Technical specifications	WA200
Capacity:	
1 st cable layer	200 kg
Last cable layer (7 th)	90 kg
Max. speed drill / driver	1400 rpm
Six-angled adapter	10 mm
Max. hoisting speed	800 mm/ min
Hoist length with 200 kg and cordless drill 14,4V - 3Ah	8 m
Cable capacity	18 m
Diameter cable	4 mm
Min. breaking load cable	9 kN
Own weight	6 kg