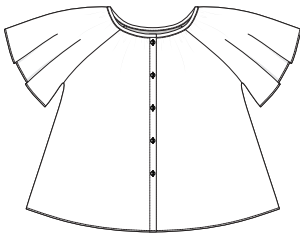


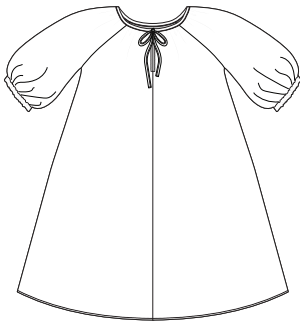
NOTIONS - SIZES A - J

VIEW A



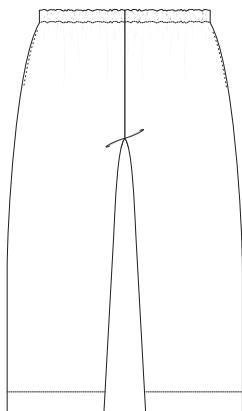
- Coordinating thread
- 5 x 1.2-1.5cm (½-5⁄8in) flat buttons
- 0.5m (0.6yd) x light to mid-weight fusible interfacing
- 0.5m (0.6yd) x vilene / tearaway
- 1m (1.1yds) x 4.5cm (1¾in) bias binding (self-made). If using pre-made, this is 25mm (1in) binding.
- Optional: 4.2m (4.6yds) x 32mm (1¼in) single-fold bias binding for hems. If using pre-made, this is 12mm (½in).

VIEW B

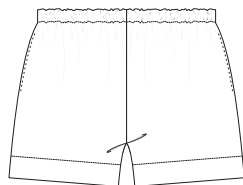


- Coordinating thread
- 0.5m (0.6yd) x vilene / tearaway
- 2m (2.2yds) x 4.5cm (1¾in) bias binding (self-made). If using store bought, you'll need 25mm (1in) binding.
- 2.2m (2.4yds) x 32mm (1¼in) single-fold bias binding. If using pre-made, this is 12mm (½in). If you would also like to bind the hem, you will need an additional 3m (3.3yds).
- 1m (1.1yds) x 6-10mm (¼-3⁄8in) flat elastic

VIEWS C + D

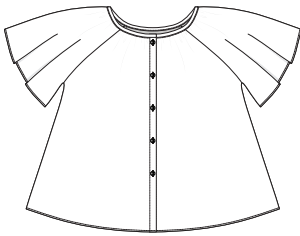


- Coordinating thread
- 2.5cm (1in) wide elastic x (your waist measurement + 5cm / 2in)



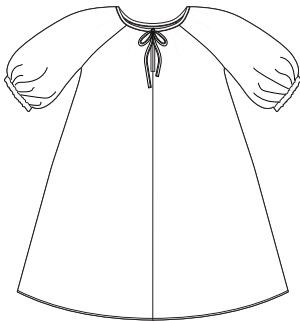
NOTIONS - SIZES G - P

VIEW A



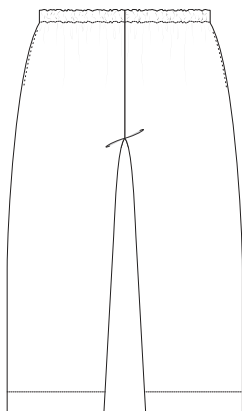
- Coordinating thread
- 5 x 1.2-1.5cm (1/2-5/8in) flat buttons
- 0.5m (0.6yd) x light to mid-weight fusible interfacing
- 0.5m (0.6yd) x vilene / tearaway
- 1m (1.1yds) x 4.5cm (1 3/4in) bias binding (self-made). If using pre-made, this is 25mm (1in) binding.
- Optional: 5.5m (6yds) x 32mm (1 1/4in) single-fold bias binding for hems. If using pre-made, this is 12mm (1/2in).

VIEW B



- Coordinating thread
- 0.5m (0.6yd) vilene / tearaway
- 2m (2.2yds) x 4.5cm (1 3/4in) bias binding (self-made). If using store bought, you'll need 25mm (1in) binding.
- 3m (3.3yds) x 32mm (1 1/4in) single-fold bias binding. If using pre-made, this is 12mm (1/2in). If you would also like to bind the hem, you will need an additional 3.6m (4yds).
- 1m (1.1yds) x 6-10mm (1/4-3/8in) flat elastic

VIEWS C + D



- Coordinating thread
- 2.5cm (1in) wide elastic x (your waist measurement + 5cm / 2in)

