



FEATURES & BENEFITS OF THE HP-105 & HP-300 SATIN URETHANES

- **Exceptional Bonding Capabilities** – No primers needed; direct to most surfaces including ferrous and non-ferrous metals without destructive surface preparation
- **Types of Surfaces** – Concrete, stained concrete, carbon steel, aluminum, galvanized metal, stainless steel, fiberglass, wood, clay/masonry surfaces, stone, hardwood, terrazzo, vinyl composition tile (VCT), vinyl sheeting, ceramic and other tile and grout surfaces with the addition of adhesion plus
- **Permeability – 2.43 Perms** – Water barrier not vapor barrier; allows water vapors to migrate through the coating into the atmosphere; providing the substrate is not susceptible to water pooling
- **Ultraviolet Insensitivity** – No clear coat needed for better UV protection
- **Low to Zero VOCs** – The volatile organic compounds (VOCs) are Less than 30 grams / liter
- **Virtually Odorless** - Does not require special breathing apparatus / respirators and does not omit any free monomers after parts A & B are mixed
- **Produced in Total Water** – Does not use solvents, exempt solvents or any co-solvent
- **Thermal Stability** – Has a high coefficient of linear expansion
- **Does Not Contain Proposition 65 Chemicals** – These chemicals are known to the state of California to cause cancer and birth defects
- **For Interior or Exterior Use** – Allows for a high performance urethane to be used indoors while the building is in operation
- **Meets U.S. Building Councils' LEED Criteria** – Under EQ 4.2 for Low-emitting paints and coatings
- **Flame Spread** – (ASTM 84); Result = 10 which is Class A / Type I (0 – 25 Flame Spread Index)
- **Smoke Developed** – (ASTM 98); Result = 5 which is Class A / Type I (0 – 450 Smoke Developed Index)
- **For Vertical or Horizontal Surfaces**
- **Increased Co-Efficient of Friction** – Products certified by the National Floor Safety Institute as High Traction with a wet co-efficient of friction rating greater than 0.60
- **Provides Anti-Graffiti Properties** – Paint, spray paint and markers can be removed without damaging the coating
- **Inherent Dry Erase Characteristics** – Can turn entire walls or tables into dry erase boards without ghosting / shadowing
- **Brush, Roll, or Spray Application**
- **Very Repairable** – Small sections can be repaired without noticing or redoing the entire section
- **Meets California Green Building Standards Code of Regulation Title 24, Part 11**

SUBSTRATES

CONCRETE



Kitchens



Food & Beverage



Warehouse

VINYL COMPOSITION TILE (VCT)



Healthcare



Education

FIBERGLASS



Waterslides



Icons

EIFS – STUCCO – FOAM – SYNTHETIC MATERIALS



Sport Arena / Anti-Graffiti



Theme Parks



Commercial Bldgs.

WOOD



Waterslides



Gymnasiums



Residential

VINYL SHEETING



Medical Offices



Corporate Offices

RUBBER

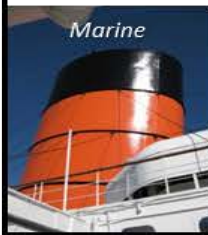


Gymnasiums



Rec Centers

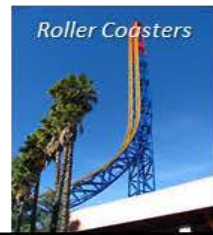
FERROUS & NON-FERROUS METALS



Marine



Structural Steel



Roller Coasters

CERAMIC / STONE – TILE & GROUT



Showers



Restaurant / Food Service



Restrooms

DRY WALL



Dry Erase

POURED URETHANE



Gymnasiums

PREVIOUSLY PAINTED SURFACES



Clear Top Coat for Protection



Clear Top Coat for Protection

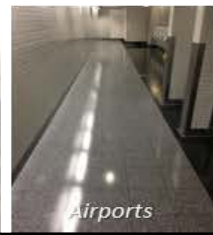
TERRAZZO



Government



Hospitality



Airports