

Xerox® DocuColor® 242/252/260  
Digital Colour Printer/Copier



Xerox® DocuColor® 242/252/260  
Easy affordable colour for  
any environment



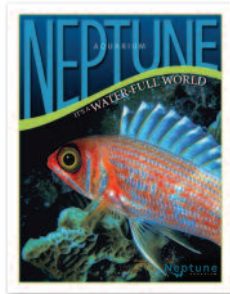
# Speed, image quality and a great price.

**There is a clear need for high-quality yet affordable digital colour whether you're in the graphic arts and design community, a corporate environment or serve a wide variety of customers.** With the DocuColor® 242/252/260 Digital Colour Printer/Copier, we offer three light-production printers that make production colour printing easy, affordable and professional with outstanding image quality, a choice of print speeds, a choice of feeding capabilities and the ability to handle a wide range of media sizes and weights. Plus, a choice of five colour servers for sophisticated colour control and document management. On top of all that, you get a choice of in-line finishing capabilities including a booklet maker. The result is a total, customised solution for your environment.





Photo Calendar



Brochure



Bi-fold Mailer and Tri-fold Brochure



Poster/Postcard

**Productivity to suit your needs** – Choose the DocuColor® 242 printer/copier for swift job completion at up to 40 ppm colour and 55 ppm black and white. For more speed, select the DocuColor 252 printer/copier for up to 50 ppm colour and 65 ppm black and white. For higher volumes and even greater productivity, there is the DocuColor 260 printer/copier; it delivers 60 ppm colour and 75 ppm black and white. Choose the one that's right for your business.

**Production performance** – This family of printers is built to enable your most demanding applications by delivering the production capabilities you need. They are scalable and can be customised for your business demands.

With a standard paper handling capacity of 3,260 sheets, DocuColor 242/252/260 printer/copiers are more productive and require less intervention. You also benefit from load-while-run toner, two black cartridges for longer runs and a 250-sheet Duplex Automatic Document Feeder (DADF) that simplifies the scanning and copying of large jobs.

**Advanced copy user interface** – The layout of the full-panel colour touch screen has been designed with ease of use in mind. It is intuitive and easy to use, enabling even inexperienced users to understand its functionality at a glance and get more jobs completed.

**Application flexibility** – Though these printer/copiers have a small footprint, they can handle media up to 300 gsm cover and run a wide variety of substrates. These include coated, labels, transparencies and synthetics. Sheet sizes can be as large as SRA3 so you can produce full-bleed prints.

**In-line finishing** – The DocuColor 242/252/260 printer/copiers are available with a choice of finishing options. Choose from either our Advanced, Professional or Light-Production Finisher.

**Exciting Variable Information (VI) printing opportunities** – The superb image quality of the DocuColor 242/252/260 printer/copiers makes them ideal for high-impact personalised VI printing. We offer powerful, efficient tools that work seamlessly with these DocuColor printer/copiers to let you add personalisation and extra value to the targeted communications.

**Security issues** – As a leader in the development of digital technology, we have demonstrated a commitment to keeping your digital information safe and secure. Customers have responded by looking to us as a trusted provider of secure solutions, with many standard and optional security features.

## Image quality you can bank on.

The DocuColor 242/252/260 printer/copiers deliver 2400 x 2400 dpi image quality and excellent fine-line reproduction. You'll also enjoy superb colour consistency and colour-management capability.

For enhanced image quality, the DocuColor 242/252/260 uses our latest VCSEL technology with a 32-beam laser. This enables these printers to write data at a quicker rate and at a higher resolution.

Another secret to the great image quality of these printers is our breakthrough Emulsion Aggregation High Gloss (EA HG) toner. This innovative toner brings out great colour, outstanding shadow detail, superior half tones and smooth transitions that will exceed your most demanding requirements. There's even an Enhanced Gloss Mode for both copy and print, letting you select a higher gloss level for each job.

The benchmark image quality of the DocuColor 242/252/260 will enable you to deliver such high-value applications as full-colour booklets, brochures, posters, demanding creative projects and more.

For added confidence, the system has achieved the FOGRA Validation Print Certification, measuring colour accuracy and consistency.



# Features, functions. For more applications.

The Xerox DocuColor® 242/252/260 printer/copiers enable the production of all types of applications and are ideal for a wide array of printing environments.

**A user interface that makes everything simpler** – Using an intuitive index tab and button configuration, the DocuColor 242/252/260 user interface adds many important copy control functions and additional system status information, all on a clean and simple view screen.

**Multiple job queues** – This feature is very important for copy and print accountability. You no longer have to manually batch jobs; multi-job queuing lets you promote and delete at the simple touch of a button.

**Got a print job? We've got your solution** – Depending on the colour server you choose, the DocuColor 242/252/260 printer/copier can handle anything from newsletters, proposals, invoices and presentations to Web printing, digital photos, product brochures, posters and catalogues. The list goes on and on. They can also be used for design proofing and proof for press.

Along every step of the way, you can count on affordable colour, 2400 x 2400 dpi resolution, a wide range of media choices, superb colour-management tools, and productive feeding and finishing options.



1

**250-sheet Duplex Automatic Document Feeder (DADF)** – simplifies the copying and scanning of large jobs, offering scan speed up to 50 ppm colour and 80 ppm black and white.

2

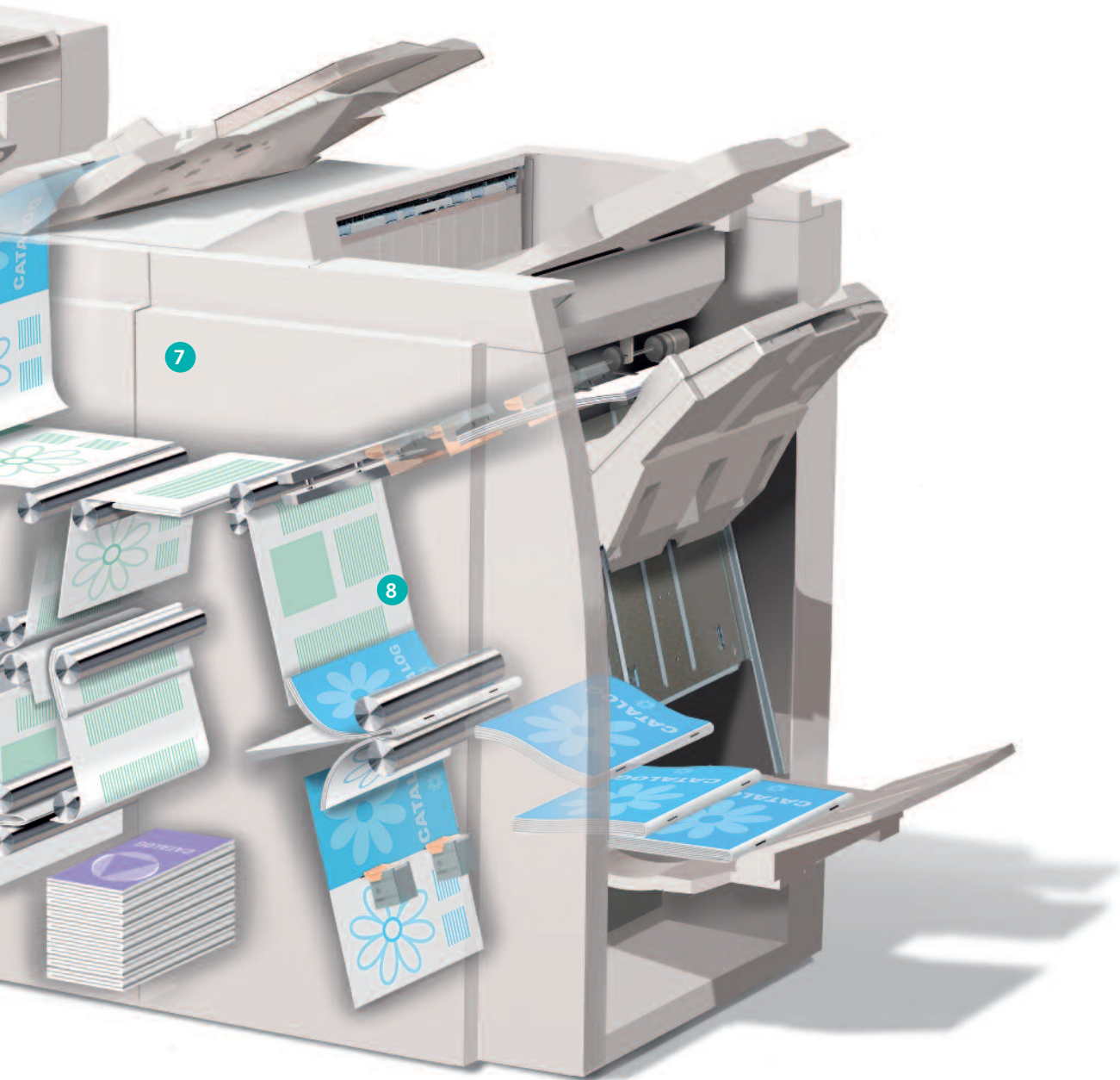
**Extra toner capacity** – two black toner SMart Kit® replaceable units keep replenishment interventions to a minimum and productivity at its highest. All toner cartridges are load-while-run, allowing you to replenish the toner without interrupting the job.

3

**Trickle-charge development system** – unique to Xerox – maintains print consistency throughout the workday.

4

**A short and straight paper path** – provides production performance, a heavier media-feeding capability and increased reliability. Centre-registered feeding results in accurate registration.



5

**Five standard trays** – have an amazing 3,260-sheet capacity.

6

**Optional high-capacity feeders** – are available for long job runs including a 2,000-sheet Oversized High-Capacity Feeder (OHCF); it can handle sheet sizes up to SRA3 and can increase feeding capacity to 5,260 sheets.

7

**Optional finishers** – (Light-Production Finisher shown above) let you produce more applications in-line.

8

**With 2400 x 2400 dpi resolution** – you enjoy excellent image clarity in both prints and copies. To maintain this consistently brilliant image quality, the unit employs an automatic Charge Corotron Cleaning Assembly.

# Finishing and feeding options add value.

Whether you are printing a brochure, newsletter, presentation or direct mail piece, you want to impress. You can do just that with the DocuColor® 242/252/260's choice of professional feeding and finishing options.

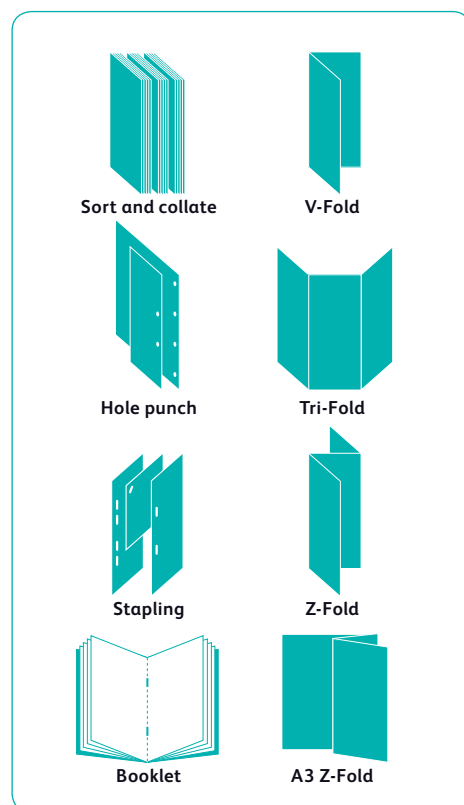
**High-Capacity Feeder** – The HCF boosts the paper capacity of the DocuColor 242/252/260 from 3,260 sheets to an amazing 5,260 sheets\*, A4 paper.

**Oversized High-Capacity Feeder** – The OHCF's air-assisted, robust feeder design enables the handling of 2,000 sheets\* up to SRA3 (64-300 gsm) coated and uncoated.

**Advanced Finisher** – This finishing option offers 50-sheet, multi-position stapling and hole punching – 2 or 4 holes – plus stacking of up to 3,000 sheets. Features a 500-sheet top tray.

**Professional Finisher** – In addition to the features of the Advanced Finisher, this includes saddle stitching with centre fold for easy booklet making for up to a 60-page booklet and Bi-fold brochure assembly. This finisher has a 500-sheet top-tray capacity, a 1,500-sheet stacker tray and a booklet output tray.

**Light-Production Finisher** – This finishing option has the capabilities of the Professional Finisher plus incorporates an interposer input tray that can accept up to 200 sheets and increases the stapling capacity to 100 sheets of 80 gsm paper. Even more versatility can be obtained with the addition of the optional tri-fold, Z-fold and A3 Z-fold module for this finisher. For heavyweight stocks, it has an active decurling function.



High-Capacity Feeder



Oversized High-Capacity Feeder



Advanced Finisher



Professional Finisher



Light-Production Finisher

\*90 gsm

# Colour servers to meet any need.

**As a DocuColor® 242/252/260 user, you have a wide choice of colour servers\* that deliver the power and flexibility you need in your business.** The features and functionality of each colour server give you various colour tools, workflow capabilities, and processing speed, along with sophisticated colour management.

**EFI Fiery® Bustled Controller** – You can count on world-class colour and an easy-to-use workflow with this built-in network controller. Its Command WorkStation® makes it easy to programme, monitor and manage workflows. Its colour-management tools enable precise colour from all applications, platforms and formats. Options include a Secure Disk Erase Kit, Impose 2.7, EFI Colour Profiler, Memory, an X-Rite® DTP 32 Series II Densitometer and Hotfolders for the DocuColor 242/252 (standard on the DocuColor 260).

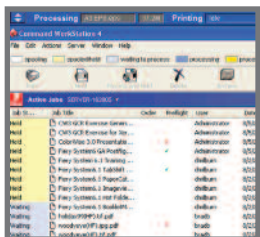
**EFI Splash® RPX-ii Colour Workflow Software** – This server software option for the EFI Bustled Controller gives graphic arts professionals the colour-management, document-management and production-management features they need for the most demanding creative assignment. Designed for Mac OS®-X/G5 environments

as well as those with Intel processors, it uses EFI's SmartRIP® technology to significantly accelerate RIPping performance, ensuring the fastest possible processing speeds for all hardware configurations.

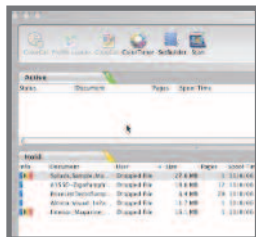
**Xerox FreeFlow® Print Server** – This user-friendly colour server combines advanced colour management with unmatched security features and system management. Hot folders, viewable colour correction curves, and simplified job and queue management features fit easily in today's demanding colour environments. Post-Rip imposition, colour background forms and Automatic Image Enhancement help push the envelope of today's key applications. Production capabilities, performance and ease of use provides you with everything you need to deliver outstanding colour output.

**EFI Fiery Colour Server** – With its outstanding colour-management tools and fast RIP speeds, this server promises impressive productivity and flexibility in virtually any printing environment. Available upgrade options include a Graphic Arts Premium Edition package, Compose, EFI Colour Profiler, hard disk security, an advanced controller interface kit and XP Pro OS.

**Creo® Spire™ Colour Server** – This colour server is available in both attached and standalone versions and lets you easily perform everything from preflight checks to proofing, imposition to short-run production and much more. Excellent profiling options let you see what your document will look like at each printing stage, and proofing couldn't be faster or easier. Available upgrades include the Professional Kit and a control station.



EFI Fiery Bustled Controller



EFI Splash RPX-ii Colour Workflow Software



Xerox FreeFlow Print Server



EFI Fiery Colour Server



Creo Spire Colour Server

\*Stands for the three colour servers are optional.



	DocuColor 242	DocuColor 252	DocuColor 260
<b>Speed</b> (Colour / black & white)	Up to 40 ppm / 55 ppm	Up to 50 ppm / 65 ppm	Up to 60 ppm / 75 ppm
<b>Duty Cycle*</b>	Up to 200,000 pages per month	Up to 200,000 pages per month	Up to 300,000 pages per month
<b>Average Monthly Print Volume**</b>	10,000 to 40,000 pages per month	10,000 to 40,000 pages per month	20,000 to 60,000 pages per month
<b>Paper Handling</b>	<b>Bypass Tray:</b> 250 sheets; custom sizes: up to SRA3, <b>Trays 1-2:</b> 500 sheets each; custom sizes: up to A3 <b>Tray 3:</b> 870 sheets, size: A4, <b>Tray 4:</b> 1,140 sheets; size: A4		
Paper input	Standard		
	Optional	<b>2,000-sheet High-Capacity Feeder:</b> A4 <b>2,000-sheet Oversize High-Capacity Feeder:</b> up to SRA3 and up to 300 gsm	
Automatic two-sided printing	Standard		
Paper output	Optional	<b>Offsetting Catch Tray (OCT):</b> 500-sheets <b>Advanced Finisher:</b> 500-sheet top tray, 3,000-sheet stacker tray, Hole punching, and Multi-position stapling <b>Professional Finisher:</b> 500-sheet top tray, 1,500-sheet stacker tray, Hole punching, Multi-position stapling, Bi-fold booklet making, Saddle-stitch booklet maker <b>Light-Production Finisher:</b> 500-sheet top tray, 1,500-sheet stacker tray, Hole punching, Multi-position stapling, Bi-fold, Saddle-stitch booklet maker, Interposer. <b>Light-Production Finisher with Folder:</b> 500-sheet top tray, 1,500-sheet stacker tray, Hole punching, Multi-position stapling, Bi-fold, Saddle-stitch booklet maker, Interposer, Tri-fold and Z-fold (A4 and A3)	
<b>Copy</b>			
Pre-collation memory	256 MB plus 80 GB hard disk drive		
First-page-out time	As fast as 10.7 seconds colour / 4.3 seconds black and white		
Copy resolution	2400 x 2400 dpi		
Copy features	Reduction/enlargement (25% -400%), Enhanced gloss level, Book copying/two-sided book copying, Mixed-sized originals, Image rotation, Edge erase, Mirror/negative images, Image shift, Booklet creation, Multi-Up, Annotation and set numbering, Covers, Poster mode, Repeat Image, Build Job, Delete inside/outside editing		
<b>Print</b>			
Resolution	2400 x 2400 dpi		
<b>Scan</b>			
Resolution	200 x 200 dpi, 300 x 300 dpi, 400 x 400 dpi, 600 x 600 dpi		
<b>Other Options</b>	Foreign Interface Kit, Convenience Stapler		

\*Duty Cycle - Maximum volume capacity expected in any one month. Not expected to be sustained on a regular basis.

\*\*Average Monthly Print Volume - Expected regular monthly throughput.

## Select Specifications

### Speed

Warm-up Time  
From Sleep Mode: 150 seconds (approx.)  
From Low Power Mode: 30 seconds (approx.)  
Scan Speed with DADF (A4):  
50 ppm Colour  
80 ppm Black and white

### Media Handling

**Trays 1-2:** 500 sheets each  
Sizes: Custom sizes up to A3  
**Tray 3:** 870 sheets; Size: A4  
**Tray 4:** 1,140 sheets; Size: A4  
**Trays 1-4:** Weights: 64 – 220 gsm  
**Bypass Tray (Tray 5):** 250 sheets  
Sizes: Custom sizes up to SRA3  
Weights: Up to 300 gsm  
**Maximum image size:**  
print – 323 x 480 mm  
copy – 297 x 432 mm

### Supplies

**Smart Kit™ Replaceable Units**  
Toner Cartridges (1 Cyan, 1 Magenta, 1 Yellow, 2 Black),  
Drum Cartridges (Cyan, Magenta, Yellow, Black), Charge  
Corotron, Fuser Module, Waste Toner Container, Staples refill  
for Convenience Stapler and Finishing options

### General Specifications

**Dimensions**  
Smallest Footprint (WxDxH): 1654 x 921 x 1372 mm

### Technology

FOGRA Validation Print Certified System

### Electrical

**DocuColor 242/252:** 10 amp (220/240v)  
**DocuColor 260:** 12 amp (208/240v)



[www.xerox.com](http://www.xerox.com)

