



Xerox® Color 560/570 Printer
Productivity plus outstanding
color for all environments.



Productivity, scalability and professional image quality, all-in-one.

The Xerox® Color 560/570 Printer provides application versatility and professional image quality, and is flexible enough to grow with your business. It's an all-in-one solution that can boost productivity in any environment.

Xerox® Color 560/570 Printer Quick Facts

- **Speed:** Up to 60/70 ppm color and 65/75 ppm black-and-white
- **Resolution:** 2400 x 2400 dpi
- **Toner:** Xerox® Emulsion Aggregation (EA) Toner with ultra-low melt technology
- **Media Weights (Maximum):** Up to 110 lb. cover / 300 gsm and up to 80 lb. cover / 220 gsm for auto duplexing most stocks
- **Media Sizes:** Up to 13 x 19.2 in. / SRA3+ / 330 x 488 mm

A flexible and affordable solution from the start.

Your teams want the flexibility and productive workflow of a multifunction device. Your graphics, creative and production teams want a higher level of quality and finishing. The Xerox® Color 560/570 Printer offers the best of all worlds.

The Xerox® Color 560/570 allows you to print, copy, fax, and scan – including scan and print with PC, USB or email. It can even print from virtually any smart phone or tablet. That's how the Xerox® Color 560/570 boosts any team's efficiency.

Capture new business and keep high-value color printing in-house.

- Print at up to 60/70 pages per minute color and up to 65/75 pages per minute black-and-white. And with easy set-up and automated workflows, you can handle quick turnarounds in style.

- Media versatility – both coated and uncoated stocks up to 110 lb. / 300 gsm.
- Inline finishing options offer a professional polish with stapling, hole-punching, folding and face trimming for presentations, brochures and reports.
- A choice of print servers allows you to boost color management and streamline labor-intensive processes.
- Variable data capabilities let you capitalize on personalized applications for direct mail.

Exceed expectations.

The Xerox® Color 560/570 Printer is engineered to bring out the best in digital printing. Whether you need to create a customer brochure, a captivating proposal or presentation, an eye-catching poster, or even window decals or polyester signs, you get stunning results every time.

Transform – and work simpler, smarter.

When work gets simpler, people are more productive. The Xerox® Color 560/570 Printer simplifies the process of capturing, editing, and storing documents – all the tools you need to get quality work done more efficiently.

Capture productivity with scanning and faxing.

- **True multitasking.** Scan, print, copy, fax or route files, all at once. Preview scans and fax images on-screen and avoid mistakes.
- **Save time and steps.** The Xerox® Color 560/570 offers superior scanning and allows you to send the files anywhere. Email lists, store on-board, send to a PC, server, USB or fax. Create a searchable PDF in one simple step.

Extend your possibilities and transform the way you get work done with the power of Xerox® Workflow Solutions.

- **Xerox® ConnectKey™ for SharePoint.** Scan files directly into Microsoft® SharePoint® and other Windows® folders. Plus, you'll go beyond basic file storage by converting documents to intelligent data and apply SharePoint policies to your data. Learn more at www.xerox.com/connectkeysharepoint.
- **Xerox® Scan to PC Desktop®.** Bridge the gap between Microsoft® Office® documents, PDFs and paper. Scan to PC Desktop allows you to customize scanning menus on your Xerox® Color 560/570 directly from your desktop. Learn more at www.xerox.com/scantopcdesktop.
- **Xerox® Mobile Print.** Xerox has all the options to enable secure, accurate printing from any Apple® iOS®, Android™ and BlackBerry® mobile devices. Learn more at www.xerox.com/mobileprint.

Secure and confident.

- **Full system Common Criteria (ISO 15408) Certification at EAL3.** This ensures the Xerox® Color 560/570 Printer conforms to the most stringent security standards.
- **Secure Print.** Keep documents private by holding print jobs in the queue until the user enters the password.
- **Password protected PDFs.** This features requires a password to open and view a sensitive scan.
- **Standard 256-bit and FIPS 140-2 encryption.** The gold standard in keeping your data secure – Image Overwrite. Automatically erases images on the device.

Control and track costs easily.

- **Xerox® Standard Accounting (XSA).** This software is a standard feature that resides locally on the device. It provides superior accounting features that lets you track, analyze and limit device usage. It lets you know where your costs are coming from so you can take control of them.
- **Equitrac Office®.** Provides a secure, convenient, mobile print workflow while controlling costs and simplifying administration (optional). Learn more at www.xerox.com/equitracoffice.
- **Xerox Secure Access Unified ID System®.** Integrates with your existing employee ID badge solution, allowing users to unlock access to system features via badge proximity or swiping (optional). Learn more at www.xerox.com/secureaccess.





Promote your image and stand out from the crowd.

Benchmark image quality that you expect. Results that truly delight.

Innovation comes standard.

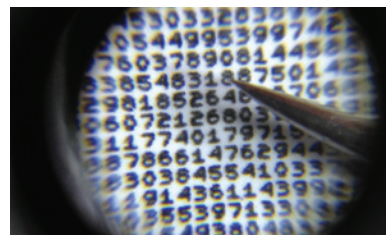
- **Vibrant color and incredible detail.** With our 2400 x 2400 dpi resolution, images are rich with crisp text so your output will always impress.
- **Excellent image quality.** Our Xerox® Emulsion Aggregation (EA) Low Melt Toner technology is chemically grown, so the small, consistent particles produce great quality with smooth transitions and an offset-like finish.
- **Keep jobs moving.** All printers have components that eventually wear out, but with Xerox® Smart Kit® Customer Replaceable Units, you can keep moving without a service call. Simple slide-in and slide-out replacement units keeps you up and running. Smart Kits include drum rolls, fuser, charge corotron assembly and waste toner bottle.

It's your image. Unleash your creativity.*

- **Match company colors and logos.** The Xerox® Color 560/570 Printer offers licensed PANTONE® matching for spot colors to the PANTONE MATCHING SYSTEM®, PANTONE GOE™ and PANTONE PLUS.
- **True Adobe® PostScript® 3™ certification and the latest Adobe PDF Print Engine (APPE).** These features plus blazing speeds means your creativity is never restricted.

Total control, when you need it most.

- **Advanced registration technology.** Bring tighter control (edge, skew correction) to your critical projects.
- **Customize your settings.** Custom paper setup lets you create, store, and retrieve unique paper profiles that can be used whenever you need them.



Xerox® Color 560/570 Printer:
0.6 point font Xerox® MicroFont
pictured with a pin.

We've combined class-leading print resolution (2400 x 2400 dpi) and the unique properties of Xerox® EA Toner with ultra-low melt technology. The result is stunning detail and an offset-like finish and vibrant color. This also allows for outstanding performance on new substrates such as Xerox® NeverTear, digital synthetics, polyesters and more.

Whatever the size and scope of your work, we'll fit your needs.

Finishing Options



1
Offset Catch Tray: 500 sheet stacking.

2
Advanced Finisher: Ideal for basic binders, manuals, reports and presentations. This finishing option offers 50-sheet, multi-position stapling and 2, 3 or 4 hole punching.

3
Professional Finisher: The choice for uncoated, manuals, etc. In addition to the features of the Advanced Finisher, this finisher includes saddle stitching with center fold for easy booklet making for up to 15-sheet coated booklets and bi-fold brochure assembly.

4
GBC® AdvancedPunch™*: Lets you create professionally bound documents in-house by combining printing, punching and collating into one convenient step.

5
Standard Finisher and Booklet Maker Finisher*: This finishing module enables coated booklets, brochures and bi-fold mailers as well as stacking, stapling and hole punching. It also includes an interposer input tray. Even more versatility can be obtained with the addition of the optional tri-fold, z-fold and tabloid z-fold module for this finisher.

6
Xerox® SquareFold® Trimmer Module: Enhances the power of the Standard Finisher with booklet maker with square fold of cover sheets and face trimming to produce booklets.

* Interface module required.

Feeding Options



7
High-Capacity Feeder: Holds up to 2,000 sheets in a wide range of weights.

8
Oversized High-Capacity Feeder: Adds capacity with either one or two media selection points for large 13 x 19 in. / SRA3 / 330 x 482 mm and up to 4,000 sheet capacity.

Finishing Applications



Sort and Collate



Stapling



Hole Punch



Booklet



Folding



Z-Fold



Tri-Fold



Tabloid Z-Fold



Face Trim



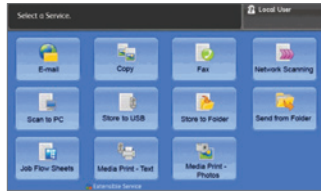
Square Fold

Print servers to fit every workflow.

We offer a choice of print servers, so you're sure to find one that fits.

Xerox® Integrated Servers

Count on superior color and high-end workflows.



The Xerox® Integrated Color Server

Ideal for high-end office applications, you will be delighted with unrivaled simplicity and value with a familiar touch screen. Learn more at www.xerox.com/560integrated-colorserver.



The Xerox® EXi Integrated Fiery® Color Server

World-class color and workflow tools that put you in command. Learn more at www.xerox.com/560exi-fierycolorserver.

Xerox® External Servers

Powerful servers with color tools, workflow capabilities, and blazing speed, all at your fingertips.



Xerox® EX Print Server, Powered by Fiery®

Fiery technology increases your profits by delivering high-impact documents with vibrant images and color that exceed your customers' expectations. Learn more at www.xerox.com/560ex-printserver.



Xerox® FreeFlow® Print Server

The Xerox® FreeFlow Print Server brings together a sophisticated blend of enterprise and production workflows. Delivers robust queue management, ConfidentColor technology and variable printing. Learn more at www.xerox.com/560freeflow-printserver.

Before



After



Transparency Handling

Before



After



Spot Color Callouts

The Adobe PDF Print Engine – or APPE – is the gold standard in PDF processing, producing PDF files that flow through your shop with a minimum of intervention. No more transparency problems. No more color matching challenges. Instead, you will see faster turnarounds, more accurate results – and more returning customers.



Create exciting new applications – easily finished inline.

The printing world is exploding with new applications and new ways to use color, media and finishing. The superb image quality, robust media latitude, flexible finishing options, modularity and server options of the Xerox® Color 560/570 Printer, integrated with enterprise workflows, make it the perfect device for capturing new business, keeping more applications in-house.

Specialty media for special results.

The Xerox® Color 560/570 was designed with media latitude in mind.

Delight your customers with finished proposals, compelling brochures, and also take advantage of the new and exceptional media capability and truly stand out.

The Xerox® 560/570 allows you to think big. Signs, ID Cards, Window Clings, Labels, Polyester Synthetics and more.

Run reliably on many of today's digital specialty substrates like Xerox® Premium NeverTear digital synthetics and more.

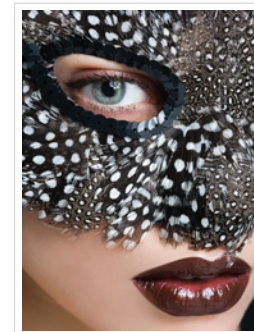
With our special polyester EA Low Melt Toner, the output fuses to polyester in a chemically bonding way, ensuring outstanding image quality on specialty substrates such as polyester and more – allowing you to offer a broader set of media choices. Premium NeverTear is water, oil, grease and tear resistant.



Xerox® NeverTear Window Signs

Production printing with enterprise workflows at an affordable price.

Image quality, ease of use, productivity, media latitude, feeding and finishing options, plus world-class workflow solutions are at your fingertips. Grow your digital color printing capabilities and reduce costs with the Xerox® Color 560/570 Printer.



- **Brochures** – easily create professional, colorful brochures with productivity-boosting inline folding and square fold trimming.
- **Presentations / Newsletters** – inline stapling and hole punching makes producing presentations and newsletters quick and easy.
- **Manuals and Reports** – inserted tabs keep annual reports and financial reports organized, while stapling and GBC AdvancedPunch hole-punching keep pages secure.
- **Posters** – expanded media range lets you run eye-catching posters on sturdy coated media – up to 13 x 19 in. / SRA3+.
- **Specialty Media and Photo Specialty applications** – impeccable color and photo-finish image quality will keep customers coming to you for all today's latest photo applications

Specifications for the Xerox® Color 560/570 Printer

Resolution

- Print / Copy: 2400 x 2400 dpi; Scan: 200 x 200, 300 x 300, 400 x 400, 600 x 600
- Line Screens: 600, 300, 200 and 150 Clustered Dot, 200 Rotated Line Screen¹

Technology

- Print, Fax, Copy, Scan, Preview, Email
- Load-while-run toner and paper capability
- Advanced Registration Technology for tighter control, ±1.2 mm along lead edge, ±2.4 mm side to side
- Custom paper set-up / alignment profiles
- Xerox® EA Low Melt Toner
- Xerox® Smart Kit® replaceable units for toners, drums, fuser, charge corotron, waste bottle, staples

Graphic Arts Credentials

- Fogra certification, PANTONE Matching System®, PANTONE GOE, PANTONE Plus, Adobe PDF Print Engine¹

Integrated Scanner

- 250 sheet capacity
- 50 ppm color / 65 ppm b/w in copy mode; 50 ppm color / 80 ppm b/w in network scanning mode
- Originals up to 11 x 17 in. / A3 in weights from 38-105 gsm (16-28 lb. bond)
- Duplex Automatic Document Feeder (DADF)

Productivity / Print Speeds

- Duty Cycle²: 300,000

Xerox® Color 560/570 Color

- 8.5 x 11 in. / A4
 - 60/70 ppm (64-105 gsm) uncoated
 - 43/50 ppm (106-176 gsm) uncoated, (106-150 gsm) coated
 - 30/35 ppm (177-300 gsm) uncoated, (151-300 gsm) coated
- 11 x 17 in. / A3
 - 30/35 ppm (64-105 gsm) uncoated
 - 21/25 ppm (106-176 gsm) uncoated, (106-150 gsm) coated
 - 14/17 ppm (177-300 gsm) uncoated, (151-300 gsm) coated
- 12 x 18 in. / SRA3
 - 27/30 ppm (64-105 gsm) uncoated
 - 19/19 ppm (106-176 gsm) uncoated, (106-150 gsm) coated
 - 12/12 ppm (177-300 gsm) uncoated, (151-300 gsm) coated

Xerox® Color 560/570 Black-and-white

- 8.5 x 11 in. / A4
 - 65/75 ppm (64-176 gsm) uncoated
 - 43/50 ppm (177-300 gsm) uncoated, face-up (106-176 gsm) coated
 - 30/35 ppm (177-300 gsm) coated
- 11 x 17 in. / A3
 - 33/37 ppm (64-176 gsm) uncoated, face-up
 - 21/25 ppm (177-300 gsm) uncoated, (106-176 gsm) coated
 - 14/17 ppm (177-300 gsm) coated
- 12 x 18 in. / SRA3
 - 29/33 ppm (64-176 gsm) uncoated
 - 19/19 ppm (177-300 gsm) uncoated, face-up (106-176 gsm) coated
 - 12/12 ppm (177-300 gsm) coated

Paper

Flexibility / Weights

- Internal Trays 64-220 gsm uncoated and coated
 - Tray 1: 500 sheets 12 x 18 in. / SRA3
 - Tray 2: 500 sheets 11 x 17 in. / A3
 - Tray 3: 870 sheets 8.5 x 11 in. / A4
 - Tray 4: 1140 sheets 8.5 x 11 in. / A4
 - Bypass 250-sheet up to 110 lb. cover (300 gsm) uncoated and coated, up to 13 x 19 in. / 330 x 482 mm
 - Optional 2,000 sheets A4 HCF
 - Optional 2,000 sheets OHCF (1- or 2-tray)
- ### Capacity and Handling (8.5 x 11 in. / A4)
- 3,260 sheets standard via four internal trays and bypass tray
 - Maximum paper capacity: 7,260 sheets via standard trays and two Oversized High Capacity Feeders (optional)
 - Two-sided printing:
 - 65 lb. cover / 176 gsm auto duplex for all stocks
 - 80 lb. / 220 gsm auto duplex for most stocks
 - 110 lb. cover / 300 gsm manual duplex for all stocks from bypass trays and optional Oversized High Capacity Feeder

Feeding and Finishing Options

High-Capacity Feeder (HCF)

- 8.5 x 11 in. / A4
- 2,000 sheets up to 80 lb. cover (220 gsm)

Oversized High-Capacity Feeder (OHCF)

- 18 lb. bond to 110 lb. cover / 64-300 gsm uncoated
- 28 lb. bond to 110 lb. cover / 106-300 gsm coated
- 7.2 x 10 in. / 182 x 250 mm – B5 to 13 x 19.2 in. / SRA3 / 330 x 488 mm
- 65 lb. cover / 176 gsm auto duplex for all stocks
- 80 lb. / 220 gsm auto duplex for most stocks (Letter / A4, Tabloid / A3)
- 110 lb. cover / 300 gsm simplex and manual duplex for all stocks
- One or two tray module: 2,000 sheets
- Small Media support included with 2-OHCF
- Envelope and small media feeder

Offset Catch Tray

- 500 sheet stacking

Advanced Finisher

- 500 sheet top tray, 3,000 sheet stacker tray
 - Multi-position stapling, coated and uncoated paper, up to 50 sheets, hole punching
- ### Professional Finisher
- 500 sheet top tray, 1,500 sheet stacker tray
 - Stapling, coated and uncoated, up to 50 sheets, hole punching
 - Bi-fold, saddle stitch booklet maker up to 15 uncoated sheets, 7 sheets at 106-176 gsm coated, 5 sheets at 177-220 gsm coated

Standard Finisher

- 500 sheet top tray, 3,000 sheet stacker tray
- Multi-position hole punching and stapling, quad / 4 staples
- Stapling, coated and uncoated, up to 100 sheets
- 200 sheet interposer for pre-printed and full bleed sheets
- Built-in decurling for coated / heavy-weight media through Interface Module required to connect to printer

Booklet Maker Finisher – all features of Standard Finisher plus:

- Coated / uncoated bi-fold or saddle-stitch coated / uncoated booklet up to 25 sheets (100 imposed pages of 20 lb. / 75 gsm media)
- Optional Folding Module for tri-fold and Z-fold (A4 / letter and A3 / tabloid)

GBC AdvancedPunch™

- Punch configurations available in A4 and 8.5 x 11 in.
- Various interchangeable die sets included

Xerox® SquareFold® Trimmer Module

- Square fold up to 25 sheets
- Face trim between 2-20 mm in 0.1 mm increments
- Paper weights 18 lb. bond to 110 lb. cover (64-300 gsm) coated and uncoated

Convenience Stapler

- Staple up to 50 sheets of 24 lb. / 90 gsm media

Xerox® Integrated Color Server

Hardware Specifications (equal or better)

- 80 GB Hard Disk Drive, 2 GB RAM
- 10.4 in. color, touch screen flat-panel display
- Ethernet interface (10 MBTX / sec, 100 MBTX / sec, 1000 MBTX / sec option)

Client Environments Supported

- Windows® XP SP1 & above (32 & 64 bit), Server 2003/2008 (32 & 64 bit), Vista (32 & 64 bit), Windows 7 (32 & 64 bit), Mac OS® 10.4 and above, Citrix, Custom driver for Unix: AIX® 5 v5.3, HP-UX® 11.0/11 v2, Solaris® 8/9/10, Linux Fedora Core® 1/5, Red Hat ES4, SUSE 10/11
- Citrix, WHQL certification¹

PDLs and Data Formats

- PDF, XPS®, PCL® 6 emulation, HP-GL2 (direct submission), Adobe® PostScript® 3™ option, TIFF, JPEG

Scan

- Scan to Email, Scan to Folder, to PC, to Mailbox (private and public), options include Scan to USB, FTP, SMB, Desk, Text searchable PDF, PDF/A, XPS, Thumbnail Preview

Security

- Standard Secure Print, Authentication with LDAP/ Kerberos/SMB/CAC, Password Protected PDF, FIPS 140-2 encryption, S/MIME Encrypted Email, IPsec, 802.1x, SNMP v3.0, Email over SSL, Image Overwrite (Immediate, Scheduled, On Demand) Hard Disk Data Encryption, Audit Log Optional CAC, Xerox Secure Access Unified ID System®
- IPv6 Ready
- 256 Bit Encryption
- Common Criteria Certified

Other Options

- USB, Media Card Reader, Common Access Card Enablement Kit, Accounting Options, Extensible Interface Platform Enabled (EIP), Foreign Device Interface
- Mobile / Smartphone Print

Additional Print Server Options

Xerox® Integrated Fiery® Color Server

Xerox® FreeFlow® Print Server

Xerox® EX Print Server, Powered by Fiery®

Electrical Requirements

- Printer: 110-127 VAC, 50/60 Hz
- Options: 100-240 VAC, 50/60 Hz
- Optional Feeding / Finishing:
 - Each module requires 100-240 VAC, 50/60 Hz power

Printer Dimensions

- Height: 54.8 in. / 1,391.5 mm
- Width: 62 in. / 1,574 mm
- Depth: 31 in. / 787 mm

¹ Depending on Print Server / Controller Selected

² Duty Cycle – Maximum volume capacity expected in any one month. Not expected to be sustained on a regular basis.

For more detailed specifications, go to www.xerox.com/560-570-Specs.

To view a product video, visit www.xerox.com. Build and configure your own Xerox® Color 560/570 Printer at www.buildyourownxerox.com.

