



Aficio™ MP C6501/7501

Fast and cost efficient
all-in-one printing

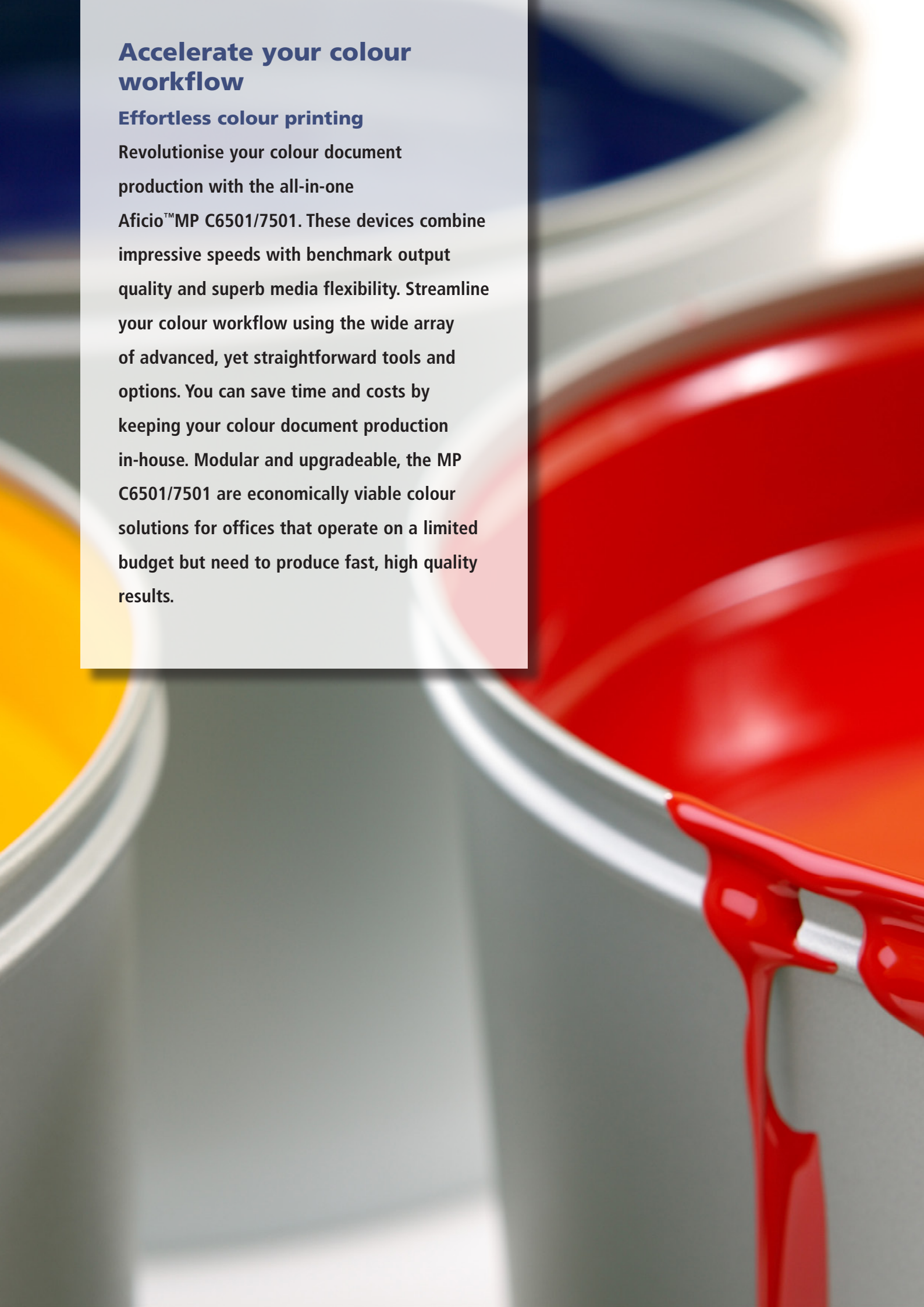


RICOH Believe in a better way

Accelerate your colour workflow

Effortless colour printing

Revolutionise your colour document production with the all-in-one Aficio™MP C6501/7501. These devices combine impressive speeds with benchmark output quality and superb media flexibility. Streamline your colour workflow using the wide array of advanced, yet straightforward tools and options. You can save time and costs by keeping your colour document production in-house. Modular and upgradeable, the MP C6501/7501 are economically viable colour solutions for offices that operate on a limited budget but need to produce fast, high quality results.



Multitasking at the heart of your office

The total package

Your office equipment needs to keep pace with your corporate department or workgroup. Whether printing, copying, scanning or faxing, the MP C6501/MP C7501 offer performance and efficiency without compromise. Incredible productivity is guaranteed with speeds of 65/75 ppm in B/W and 60/70 ppm in full colour. Both systems offer standard duplexing at equally high speeds. A short warm-up time, fast first output speed and colour adjustment time further reduce waiting time.

The impact of colour

Colour has impact; it emphasises your message and adds a professional look to your documents. Presentations, mailings, newsletters and spreadsheets all become more recognisable, attractive and readable. Additionally, as you can put a colour logo on your documents, brand recognition will improve among your clients and partners.

Security conscious

To protect the interests of your work environment, the MP C6501/MP C7501 are equipped with advanced security functionalities.

- Prevention of unauthorised machine access and restricted colour usage
- To avoid industrial spying and information leaks, the Data Overwrite Security Unit erases the temporary data on the systems' Hard Disk Drive
- The HDD encryption unit encrypts all data stored on the HDD. Even if your HDD is stolen, the data will not be disclosed
- IP filtering and other forms of data encryption further safeguard crucial information

True communication hubs

Save time, costs and empower your office with a truly digital information flow. Easily share scanned documents by sending them instantly to any email address in the world. Scanned documents can also be distributed directly to a dedicated network folder, delivered via an FTP server, or made accessible through a web browser. In addition, you can store, retrieve and re-use documents any time using the systems' built-in document server. Local scanning to USB/SD card is available as an option.



Boasting a range of advanced capabilities, the Aficio™MP C6501/7501 fulfil your requirements with regard to speed, colour and security. Their wide variety of uses make these devices a valuable tool for all your company's departments.

Key Features

- Full-featured multitaskers: copy and optional print, scan and fax
- High productivity: 60/70 ppm in full colour, 65/75 ppm in black and white
- Large paper capacity
- Large variety of finishing options
- Wide media versatility & standard duplexing
- Advanced security features
- Outstanding ease of use

Raising the bar for colour flexibility

To efficiently produce high quality colour documents the Aficio™MP C6501/MP C7501 offer extensive media versatility. A complete range of inline finishing capabilities adds to the systems' flexibility and allows you to produce all colour documents in-house.



Impeccable colour quality

The MP C6501/MP C7501 state-of-the-art image processing technology ensures remarkable registration accuracy for perfect colour results at 600 dpi resolution. The new PxP toner takes image quality to new heights. It's minute, yet uniform particle size allows for precise reproduction of even the finest lines without sacrificing a perfect colour density. As quality is consistent even during longer runs with the newly designed image developing system, there is no need to outsource colour documents.

Continuous operation

- 3400-sheet standard paper capacity ensures an uninterrupted workflow.
- Expand your paper capacity with the optional 2000-sheet or 4000-sheet LCT (Large Capacity Tray).
- Standard 150-sheet Auto Reverse Document Feeder (ARDF) facilitates feeding of larger documents.
- Paper in the A4 tandem tray can be replenished during print/copy runs.



Expert finishing

You can meet the most diverging user requirements with the Aficio™MP C6501/MP C7501's versatile finishing possibilities. From stapling, punching, cover insertion, chaptering, to booklet making and z-folding, multi-folding and ring-binding options. All you need to create flawlessly finished output is here.





Outstanding ease of use

- Large colour LCD touch screen with basic application key layout.
- Intuitive operation: no training is required.
- Animated guidance in case of irregularities.
- Paper trays are outfitted with a special handle, shaped for easy grip.
- Changing toner is straightforward and fast.

Intelligent business fax

- Automatically distribute incoming faxes to email or folder.
- Forward faxes to a single person or an entire group for optimum efficiency.
- Transmit faxes directly from the convenience of your own PC (LAN fax).
- Reduce costs by using the internet for long distance faxing (internet fax)
- Virtually eliminate the costs of sending (long distance) faxes by transmitting fax data over the IP/VoIP network (IP fax).



Wide media versatility

For the creation of your reports, handouts or flyers, the Aficio™MP C6501/MP C7501 support a great variety of media. Effortlessly handle paper up to A3 wide (12" x 18") and up to 300 gsm, as well as OHP transparency sheets.

App2Me

The MP C6501/7501 are the first digital imaging systems to feature Ricoh's new widget-based technology, App2Me*. An integrated document management system, App2Me enables users to create customised workflows and execute them anywhere on the network where there is an MP C6501, MP C7501 or an App2Me compatible device.

* Launching mid 2010

The Aficio™MP C6501/7501 offers superb environmental qualifications

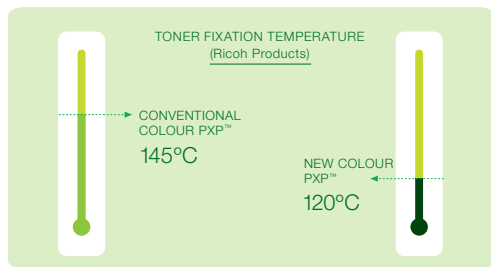
As a worldwide environmental conservation leader, Ricoh has developed the Aficio™MP C6501/7501 to help reduce power consumption, while maintaining a high level of performance and user-friendliness. This ensures that users are more inclined to use these features to achieve energy savings.



Working together to conserve our environment

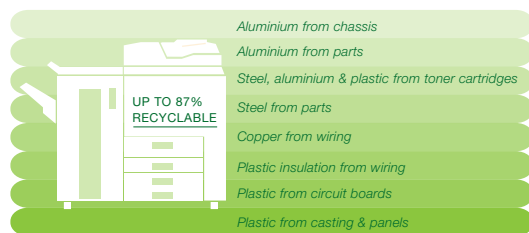
PxP™ Toner

Made from newly developed polymerised resin, PxP™ colour toner is designed to fuse at 20°C lower than previously, providing a lower power consumption while also achieving higher picture quality. PxP™ also uses less resources to manufacture – further reducing waste.



Green Product Design

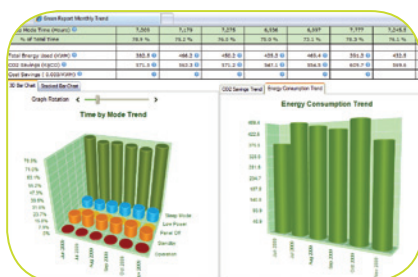
The Aficio™MP C6501/7501 are designed to have up to 98% recyclable parts. Ricoh continues to develop new materials to reduce environmental impact as well as technologies to reduce paper consumption. PxP™ also uses less resources to manufacture – further reducing waste.



Monitor the Aficio™MP C6501/7501's green performance

The Ricoh @Remote Intelligent Management System monitors Ricoh networked printers and MFDs to track a variety of environmental metrics related to how much energy and paper each Ricoh device consumes:

- Learn how many sheets of paper are used from month to month
- Track the percentage of jobs that use duplex or combined printing or copying, which can help cut paper consumption and paper expenses significantly. The data is presented in CO₂, trees & savings
- Analyse how much electricity the Aficio™MP C6501/7501 consumes monthly** and track energy saver setting changes to ensure a minimal environmental impact



Track trends in energy consumption over time



Translate usage data into reports that detail CO₂ reduction trends



We've reduced our carbon footprint. Have you?

Ricoh's commitment to the environment spans back three decades, long before the environment became a hot topic globally. What this means is that you gain the benefit of our expertise in this area to minimise your own 'carbon footprint'.

We have been consistently recognised for our efforts in reducing our global impact on the environment.

- Ricoh has been included in the annual 'Global 100 Most Sustainable Corporations' list since its inception in 2005.
- In 2003 Ricoh received the prestigious WEC Gold Medal from the World Environment Centre, the first company from the Asian region to be honoured
- We have committed to aggressively lower our environmental impact by 20% in 2010
- Our production plants globally are zero-waste-to-landfill

Simple ways to conserve

Saving paper: Document production consumes a lot of energy. Ricoh has incorporated fast and easy to use duplex technologies, and multi-page printing choices into the Aficio MP C6501/7501 to reduce time, energy and paper consumption.

Recycling: Wherever possible, Ricoh re-use or recycle used parts, consumables and machines to prevent any of our waste going to landfill. Almost a decade ago Ricoh developed our toner collection and recycling program to allow customers to easily recycle used toner cartridges and bottles. We also have a machine recycling program which recycles 98% of MFDs and printers.

* The TEC or typical electricity consumption was developed as a specific environmental testing methodology by the US Environmental Protection Agency, US Department of Energy. It evaluates the typical energy consumption of a product across all power modes while in normal operation, providing a more realistic indicator of a device's efficiency.

** Formulas obtained from US Environmental Protection Agency - US Department of Energy

Specifications

Copier

Copying process:	4-drum dry electrostatic transfer system with internal transfer belt
Copy speed:	
MP C6501:	B/W: 65 copies per minute Full colour: 60 copies per minute
MP C7501:	B/W: 75 copies per minute Full colour: 70 copies per minute
Resolution:	600 dpi 4 bit
Multiple copy:	Up to 999
Warm-up time:	Less than 60 seconds
First output speed:	
MP C6501:	B/W: Less than 5.7 seconds Full colour: Less than 7.5 seconds
MP C7501:	B/W: Less than 4.9 seconds Full colour: Less than 6.4 seconds
Zoom:	25 - 400% (in 1% steps)
Memory:	Standard: 2048 MB + 320 GB Hard
Paper input capacity:	Standard: 2 x 1100-sheet tray 2 x 550-sheet trays 1 x 100-sheet bypass tray
Maximum:	7400 sheets
Paper output capacity:	
Standard:	500 sheets
Maximum:	4150 sheets
Paper size:	A5 - A3 wide
Paper weight:	Paper trays: 52 - 256 gsm
Bypass tray/wide LCT tray:	52 - 300 gsm
Duplex tray:	60 - 169 gsm
Dimensions (W x D x H):	750 x 850 x 1,230 mm
Weight:	Less than 298 kg
Power source:	220 - 240 V, 50/60 Hz
Power consumption:	
Operation:	
MP C6501:	Less than 2.4 kW
MP C7501:	Less than 2.4 kW
Sleep mode:	
MP C6501:	Less than 3 W
MP C7501:	Less than 3W

Ricoh Controller

CPU:	Intel® Pentium® M 1.4 GHz
Print speed:	
MP C6501:	B/W: 65 prints per minute Full colour: 60 prints per minute
MP C7501:	B/W: 75 prints per minute Full colour: 70 prints per minute
Printer language: Standard:	PCL5c, PCL6, XPS™
Option:	Adobe® PostScript® 3™
Resolution:	PCL5c 300/600, PCL6 600/1200 PS3 600/1200, XPS 600/1200
Interface:	Standard: USB 2.0 Host I/F Ethernet 10 base-T/100 base-TX Option: Bi-directional IEEE 1284 Wireless LAN (IEEE 802.11g) Bluetooth Gigabit Ethernet
Network protocol:	TCP/IP, IPX/SPX, AppleTalk
Supported environments:	Windows® 2000/XP/Vista/Server 2003/Server 2008

Novell® NetWare® 6.5	
UNIX Sun® Solaris, HP-UX	
SCO OpenServer	
RedHat® Linux	
IBM® AIX	
Macintosh 8.6 - 9.2.x (OS X Classic)	
Macintosh X v10.1 or later (native mode)	
Additional feature:	PDF Direct Print (option with Adobe® PostScript® 3™ unit)

EFI Controller (Optional)*

CPU:	Intel Core Duo T2500 2.0GHz
Memory:	HDD 80GB Standard
Copy speed:	
MP C6501:	B/W: 65 copies per minute Full colour: 60 copies per minute
MP C7501:	B/W: 75 copies per minutes Full colour: 70 copies per minute
Printer language:	PostScript® 3™, PCL5c, PCL6
Resolution:	1,200dpi (1 bit) 600 dpi (4 bit)
Interface:	Standard: 1000/100/10BASE-T USB 2.0 (For USB Media Print)
Network protocol:	TCP/IP (IPv4, IPv6), AppleTalk, SMB
Fonts:	PS3: 138 fonts PCL: 80 AGFA fonts
Software:	Command Workstation™ Windows Edition 5, Command Workstation™ Macintosh Edition V5, ColorWise Pro Tools Fiery Scan Printer Delete Utility Fiery Web Tools
Options:	SeeSequence Impose, Auto Trapping, Spot On, Hot Folder, Color Profiler Suite (UV & non-UV version)

Scanner

Scan speed:	
B/W:	Maximum 82ipm Simplex, 125ipm Duplex (MH/A4),
Full colour:	Maximum 70ipm simplex 115ipm duplex (MH/A4)
Resolution:	100, 150, 200, 300, 400, 600 dpi
Original size:	A5 - A3
Output formats:	TIFF (single-/multi-page), Jpeg 2000 PDF (single-/multi-page), Support for high compression PDF
Bundled drivers:	Network, TWAIN
Scan to email:	SMTP, TCP/IP
Destination addresses:	Maximum 500 per job
Stored destination addresses:	Maximum 2000
Address book:	Via LDAP, locally on Hard Disk Drive or through Web Image Monitor & Smart Net Monitor
Scan to folder:	SMB, FTP or NCP protocol (with login security)
Destination:	Maximum 50 folders per job
Network Twain:	Windows 2000/XP/Server 2003/ Vista/Server 2008

Software

- SmartDeviceMonitor™
- Web SmartDeviceMonitor™
- Web Image Monitor

Fax (Optional)

Circuit:	PSTN, PBX
Compatibility:	ITU-T (CCITT) G3, T.37, T.38
Modem speed:	Maximum 33.6 Kbps
Resolution:	200 x 100/200 dpi, 400 with optional SAF memory
Compression method:	MH, MR, MMR, JBIG
Scanning speed:	0.7 second (200 x 200 dpi, A4, SEF)
Memory capacity:	
Std:	4 MB
Max:	28 (with SAF memory)
Memory backup:	Yes

Options

2,000-sheet large capacity tray (A5 - A3+), 4,000-sheet large capacity tray (A4), 3,000-sheet finisher with 100-sheet stapler, 3,000-sheet finisher with 50-sheet stapler, 2,000-sheet booklet finisher, Jogger unit for finisher, 9-bin mailbox for finisher, 2-source cover interposer for finisher, Cover interposer for finisher, 2/4 or 3 hole punch kits, Copy tray, Tab sheet unit, Fax unit, SAF memory, 2nd Super G3 port, Data Overwrite Security Unit, HDD encryption unit, File Format Converter, Copy Connect kit, Adobe® PostScript® 3™, Bi-directional IEEE 1284, Wireless LAN (IEEE 802.11a/g), Bluetooth, Gigabit Ethernet, Professional software solutions, scan to USB/SD

* Available from June 2010

App2Me



Bluetooth



Embedded Software Architecture™



Adobe PostScript 3™



All brand and/or product names are trademarks of their respective owners.

Specifications and external appearance are subject to change without notice.

Product code: 950446

RICOH

