

# SHARP®

## PRO SERIES COLOR DOCUMENT SYSTEMS ●●●●



### MX-6500N MX-7500N



MX-7500N with MX-PE10  
EFI Fiery Controller  
Outstanding 71-80 ppm  
A3 Color MFP



MX-6500N with MX-PE10  
EFI Fiery Controller  
Outstanding 61-70 ppm  
A3 Color MFP



"Outstanding Achievement  
in Innovation"  
Full-Bleed Booklets



"Outstanding Achievement  
in Innovation" EFI Fiery  
Command Workstation Integration



"Better Buys for Business  
Editor's Choice Award

The new Sharp Pro Series Color Document Systems deliver breakthrough performance and unmatched versatility.

## SUPERIOR IMAGE QUALITY WITH PRODUCTIVE FEATURES

Versatility

The MX-6500N and MX-7500N high performance color document systems offer exceptional productivity, professional features and world-class image quality at speeds up to 75 ppm. Designed for busy in-plant and on-demand workflow environments, these new models combine a versatile, modular design with a wide range of supported media and powerful output capabilities that can help your business produce more jobs in-house and improve profitability.

### Key Features

- Edge-to-edge printing enables operators to output high quality, full-bleed booklets in-line, helping to reduce outsourcing costs as well as production time.
- A powerful external Fiery® Color Print Server with Command WorkStation® is available for color critical environments that need precision job management. Command WorkStation is fully integrated with the Sharp touch-screen for unmatched control and ease-of-use.
- Sharp's exclusive triple air-feed paper handling option provides higher reliability for maximum uptime as well as enhanced media support, and is virtually maintenance free.

The MX-6500N and MX-7500N also support Sharp OSA® technology, which makes integration with network applications and cloud services simple and easy. Sharp's industry-leading security platform incorporates standard 256-bit data encryption and overwrite protection to help safeguard your business's intellectual property. And when it comes time to trade in, a convenient End-of-Lease feature can erase all job data and user data.





# ENGINEERED TO MAXIMIZE OUTPUT EFFICIENCY



FULL-BLEED  
EDGE-TO-EDGE PRINTING

AVAILABLE FIERY COLOR  
PRINT SERVER

TRIPLE AIR-FEED PAPER  
HANDLING OPTION

An advanced design plus multi-function capability allow you to meet tomorrow's document needs today.

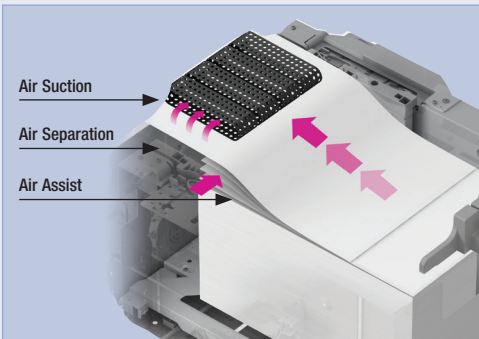
- Flexible modular design provides a **wide variety of configurations** from basic high-speed copying and printing to professional folding and **booklet making**
- 150-sheet **Duplex Single Pass Feeder (DSPF)** scans documents at up to 150 images per minute
- Up to **13,500-sheet paper capacity** supports media up to **110 lb. cover stock (300 gsm)** and up to 13" x 19" output
- **On-board paper catalog** stores up to 1,000 media profiles to help streamline job set-up and maintain optimum output quality
- Sharp's **Color Consistency System** with next generation image process control delivers high-quality color output and maintains optimum color balance and toner density page after page
- Standard PCL®6 and **true Adobe® PostScript®3™** with available Windows® XPS printing systems
- **Large 15.4"** (diagonally measured) high-resolution **color touch-screen display** with integrated keyboard



*MX-7500N shown with Fiery Command WorkStation fully integrated at the Sharp control panel.*

- **PANTONE** Licensing offers unprecedented levels of color fidelity to the **PANTONE MATCHING SYSTEM®**
- True **1200 x 1200 dpi** printing with 8-bit processing provides beautiful images and enhanced clarity for fine details such as small text and graphics
- Standard **Job Management** features make it easy to print on-demand as well as retain jobs, combine jobs, repaginate jobs, edit pages and more
- **Energy efficient** belt fusing offers **low power consumption**, fast warm up time, enhanced print quality and greater media capabilities
- Convenient **End-of-Lease feature** can erase all files on the hard disk drive, all user data, job status data and address book data at trade-in time

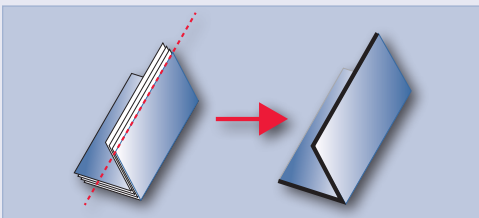
## PROFESSIONAL FEATURES THAT ENHANCE PRODUCTIVITY



Triple air-feed LCT paper trays maximize reliability and minimize downtime. Pneumatic sensors maintain consistent air flow.



Produce high quality full-bleed color booklets up to 80 pages with the MX-FN22 Saddle Stitch Finisher, or up to 120 pages with the Plockmatic Booklet Maker System.



The MX-TM10 Trimmer Unit option for the MX-FN22 Saddle Stitch Finisher can cut the folded open edge for a smooth, straight, finished look.

Production class paper handling, full-bleed printing, with versatile in-line finishing – the MX-6500N/7500N capabilities will exceed your expectations.

### High Performance Paper Handling with Air-feed Technology

Sharp understands the importance of productivity, that's why the new MX-6500N and MX-7500N Pro Series Color Document Systems offer up to **13,500-sheet paper capacity** and support **media types up to 110 lb. cover (300 gsm), even when duplexing!** Sharp's advanced large capacity paper tray option uses air-feed technology, which minimizes downtime. A feature typically found on printing presses, the triple air-feed system directs air flow with precision accuracy to ensure proper paper handling. A standard dual head document feeder can scan up to **150 images per minute**.



13,500-sheet paper capacity with available options

### Print full-bleed High Quality Color Booklets In-line

With the MX-6500N/7500N innovative **edge-to-edge printing** feature, operators can produce compelling **full-bleed color booklets** up to 80 pages. Sharp makes it easy with the available MX-FN22 Saddle Stitch Finisher and MX-TM10 Trimmer Unit. For even more productivity, choose the Plockmatic Booklet Maker System, which can **produce up to 120-page saddle-stitch or square fold spine booklets**. Help reduce outsourcing costs as well as production time by producing high quality full-bleed booklets in-house.

MX-FN22 Saddle  
Stitch Finisher







## OUTSTANDING COLOR QUALITY – HIGH PERFORMANCE OUTPUT

With the available MX-PE10 Fiery Color Print Server, the Sharp Pro Series Color Document System becomes a powerful integrated solution for managing professional in-plant and busy on-demand printing environments.

- Easily manage jobs with Fiery® Command WorkStation® fully integrated at the Sharp control panel for unmatched control and ease of use
- Deliver high impact documents with vibrant color fidelity that maintains consistent results page after page
- Process large, complex jobs at speeds up to 75 ppm that will exceed your expectations

### **Better Productivity with Higher Performance**

The powerful architecture of the MX-PE10 Fiery Server **shortens turnaround times**, while helping companies produce professional-looking finished jobs that win them new business and get their customers noticed.

### **Outstanding Color Across Applications**

In demanding environments, achieving accurate color every time is critical. The integrated Fiery color management tools provide **superior color control** out of the box. Customers who routinely use transparencies, and other effects such as drop shadows, can rest assured that their designs will be printed correctly.

### **Centralized Control and Automated Management**

The MX-PE10 Fiery Server offers a **centralized solution** that features the award winning Command WorkStation®. Its interactive WYSIWYG interface enables operators to monitor, control and troubleshoot production from multiple desktops or locally at the Fiery Server directly from the Sharp Pro Series touch-screen.

### **Industry-Leading Production Print and Variable Data Tools**

The MX-PE10 Fiery Server offers optional make-ready tools and driver-based imposition with Booklet Maker, to efficiently handle many production processes. It enables customers to **produce short-run jobs profitably** by automating manual tasks, and increases workflow flexibility by supporting industry-leading variable data printing (VDP) formats including PPML and the new PDF/VT-1 and 2 formats.

### **Integration with Third Party and Other EFI Solutions**

The MX-PE10 Fiery Server uses the Adobe PDF Print Engine (APPE) v2.5 rendering technology to offer a native end-to-end PDF workflow. The Fiery open platform also supports industry standards and **seamlessly integrates with existing MIS environments**, third-party vendors and other EFI MIS solutions.



MX-7500N shown with Fiery Command WorkStation fully integrated at the Sharp control panel.



The MX-PE10 Fiery Server installation includes a touch pad for the Sharp Pro Series Document Systems.



# A HIGH PERFORMANCE DOCUMENT SYSTEM

# Flexibility

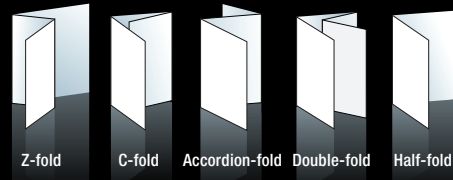
The MX-6500N and MX-7500N Pro Series Color Document Systems utilize a powerful multi-processor controller designed to quickly execute complex print and copy jobs in busy production environments at speeds up to 65ppm and 75ppm respectively.

### High Quality Professional Output

Produce brilliant color documents as well as compelling black and white documents with crisp razor-sharp graphics. True 1200 x 1200 dpi resolution with 8-bit processing helps ensure all your documents will look great.

### Multi-Folding Unit

Provides a variety of folds, including Z-fold, C-fold, Accordion fold, Double fold and Half fold.



### Plockmatic Production Booklet Maker System

Produces 120-page full-bleed, square-fold spine booklets in-line at engine speed.

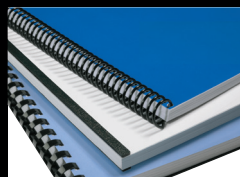


### Versatile Finishing Options

Two powerful finishing systems are available – a 4,000-sheet stacking finisher with 100-sheet stapling capacity or a 4,000-sheet saddle-stitch finisher, which can produce up to 80-page full-bleed booklets with the available face trimmer unit.

### GBC® SmartPunch Pro™

Professional punching system produces up to seven commonly used punch styles for creating professional bound booklets.



### 5,000-Sheet Stacker

For high volume post process jobs add the 5,000-sheet stacker with standard paper cart. Connect two stackers in tandem (as shown) for unattended output of up to 10,000 sheets.





# HIGH IMPACT VERSATILITY AND SCALABILITY



Micro-Fine  
Toner Technology  
Developer Auto  
Refresh Process  
Real-Time  
Process Control

## Color Consistency System

Sharp's Color Consistency System combines Micro-fine Toner Technology with advanced Developer Refresh Technology and next generation Image Process Control. This synergy of processes helps ensure color output is at peak performance page-after-page and job-after-job.

## Convenient Job Management

1TB hard disk drive provides on-board document storage. An intuitive thumbnail view makes it easy to select, edit, reprint, repaginate and more.

## Post Sheet Inserter

Produce professional looking documents with pre-printed covers and chapter inserts with the available post sheet inserter.

## Integrated Network Scanning

Sharp's ImageSEND™ feature provides one-touch document distribution. Scans to multiple destinations, including E-mail, FTP, Network Folder (SMB and Home Directory) and USB.

## Duplexing Single Pass Feeder (DSPF)

Standard 150-sheet dual head document feeder scans both sides of a document in a single pass at up to 150 images per minute (IPM). This system helps maximize both efficiency and reliability.

## 15.4" (diagonally measured) Touch-screen

A large, high resolution touch-screen with tablet-style navigation makes it easy to access features. You can also add shortcut keys to popular features, change the key layout or add a custom background theme.

## 500-Sheet Multi-Bypass

Feeds paper sizes from 5-1/2" x 8-1/2" to 13" x 19". Also feeds banner paper up to 12" x 47.2" with the available Long Paper Feeding Tray.

## Independent Motors

Insulated independent motors run quieter and provide higher reliability.

## 3,000-Sheet Standard Paper Capacity

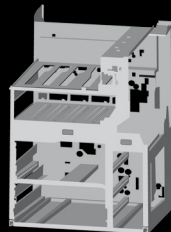
Includes 2,000-sheet letter size tandem tray and two 500-sheet letter/legal/ledger size trays. Add optional paper handling accessories for a maximum on-line paper capacity of 13,500 sheets.

## Rigid Frame Construction

Offers increased durability and reliability to withstand heavy use.

## Superior Media Handling

Sharp's advanced 5,000-sheet large capacity paper tray option utilizes triple air-feed technology, which directs air flow with precision accuracy for proper paper handling and enhanced media support up to 300 gsm. Two large capacity trays can be connected in tandem (as shown).



# CONFIGURATIONS TO SUIT VIRTUALLY ANY ENVIRONMENT

## Versatile and Customizable To Fit Your Needs

The MX-6500N/7500N Pro Series Color Document Systems offer flexible paper handling and finishing options to accommodate any size in-plant or on-demand workflow environment.\*



MX-7500N shown with 3,500-sheet large capacity cassette, 100-sheet Staple/Saddle Finisher and 100-sheet bypass tray.



MX-7500N shown with Curl Correction Unit, Inserter, Multi-Folding Unit, GBC SmartPunch Pro, 100-sheet Staple/Saddle Finisher, dual 5,000-sheet large capacity trays, dual 5,000-sheet paper stackers, 500-sheet multi-bypass tray and status indicator.

## Modular Options Make It Easy To Build the System of Your Choice

Options for the MX-6500N/7500N enable businesses to choose from several high performance finishing systems that offer up to 100-sheet stapling, professional saddle stitch booklet making and three-hole punching. More advanced configurations include a square-fold spine Booklet Making System, a professional punching system, high capacity paper stackers, a two-tray inserter, a multi-folding unit and a trimmer unit.

CUSTOMIZE



Multi-Folding Unit

Two-Tray Inserter

MX-6500N/7500N Base Machine

3,500-Sheet Letter LCC

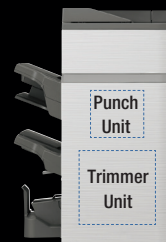
100-Sheet Multi-Bypass

Long Paper Feed Tray

3,000-Sheet Ledger LCC



Plockmatic 120-page Production Booklet Maker System



100-Sheet Staple Saddle Finisher



100-Sheet Staple Stacking Finisher



GBC Smart Punch Pro™



5,000-Sheet Paper Stacker



5,000-Sheet LCT Air-Feed



500-Sheet Multi-Bypass

\*Some options not available in all configurations, see your local dealer.



# GET MORE OUT OF NETWORK RESOURCES

## Streamline your document workflow and enhance productivity with Sharp OSA technology.

### **Integrating with Network Applications and Cloud Services Has Never Been So Easy**

With standard Application Communication and External Accounting modules, the MX-6500N/7500N color series offers **powerful document workflow capabilities** to help businesses leverage their network infrastructure, cloud-enabled services and more.\* While others are limited to a small circle of productivity, the Sharp OSA development platform allows businesses to leverage the power of their network applications, back-end systems, even cloud-enabled services, right from the touch-screen panel of this new series.



### **Save Time, Increase Efficiency**

You'll save time and increase the efficiency of everyday tasks with Sharp OSA technology because it can be virtually seamless to the user. Any MX-6500N/7500N anywhere in the organization can display choices that were once only available on a desktop PC. With **one-touch access** to business applications via Sharp OSA integration, you can start and finish a document distribution task without worry.

*\*Some features require optional equipment.*

### **Customized Integration**

Sharp OSA technology also provides **powerful customization**. With the ability to personalize applications and processes specific to your business, Sharp OSA technology can help eliminate redundancy and **streamline workflow**, helping to save time and **optimize productivity**. The latest version of Sharp OSA technology can reach beyond the firewall, enabling cloud-based applications over the Internet. And since Sharp OSA technology utilizes industry-standard network protocols and web APIs, third party software developers can deliver customized solutions to your business faster than ever.

### **Connect with Cloud Portal Office and Collaborate More Easily**

Cloud Portal Office is a comprehensive document storage and sharing service that provides a convenient way to **seamlessly connect to your business content** and easily **share and collaborate** with team members. You can also capture, index and archive both paper and electronic documents in a single repository. Most importantly, IT administrators can **manage and control user access** in order to safeguard company data.

# ADVANCED DEVICE MANAGEMENT TOOLS MAXIMIZE EFFICIENCY

## The MX-6500N/7500N Pro Series Color Document Systems enhance operational efficiency through versatile device management.



### **Sharp Remote Device Manager (SRDM)\***

Make management of your MX-6500N/7500N simple and straightforward with Sharp Remote Device Manager (SRDM). This easy-to-use software allows you to take control of the versatile system features and simplifies installation and management.

- With **Printer Status Monitor**, network users can view printer conditions, check paper levels, toner, and more, all through an easy-to-use interface.
- With Sharp Remote Device Manager, administrators can easily manage the setup, configuration, device settings and more. Advanced features such as **Remote Front Panel** allow administrators and support personnel to view and control the LCD panel of the machine remotely from virtually any PC on the network. Plus, with event-driven service alerts, administrators and supervisors can achieve higher productivity. Now it is easier than ever to view click counts, history reports and more.
- Experience the convenience of an **Embedded Web Page** right from your desktop. This advanced web-based management tool allows users to create and manage their own network scanning destinations, profiles and web-links. Administrators can access device settings, color control, account information and security settings.

### **Take Charge of Color Usage and Costs**

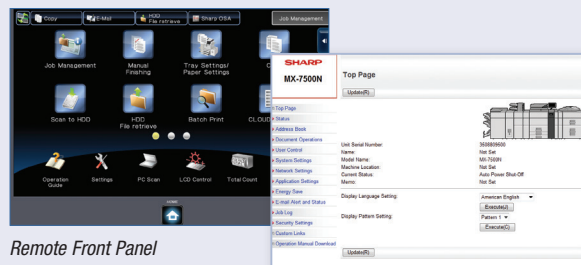
With Sharp's device management system, administrators and supervisors can **define user groups** on the MX-6500N/7500N to manage and restrict features, such as color copying, scanning or printing. Easily set up a custom user group to manage page counts (copy, print, scan or fax operations) for both color and B&W. This helps to simplify cost management of color imaging. The MX-6500N/7500N can store profiles for up to 1,000 users.

### **24/7 Training with My Sharp™**

Managing all of the advanced features of your Sharp product is simple and easy. Ask your Authorized Sharp Dealer about the **My Sharp** website. This dedicated customer training website is customized to your MX-6500N/7500N and allows you to locate resources and find information specific to your configuration, truly helping you maximize your investment.



**SHARP**



Remote Front Panel

Embedded Web Page

*\* Not available at time of launch.*

# SAFEGUARD YOUR INTELLECTUAL PROPERTY

## PRIVACY

## AUTHORIZATION

## CONFIDENTIALITY

## PROTECTION



### Sharp's Standard Key Security Features at a Glance

- 256-Bit Data Encryption
- Up to 7 times Data Overwrite Protection
- Group Account Management for up to 1,000 Users
- Confidential Printing
- Port Management
- IP/MAC Address Filtering

## Innovative document and device protection helps ensure confidentiality.

To help protect your data, the MX-6500N/7500N offers several layers of **Standard Security**, making Sharp the optimum choice to help protect employees' privacy and intellectual property. As a leader in office equipment security, Sharp makes it easy for virtually any business or government entity to safely deploy digital copying, printing, scanning and faxing.

### **Authority Groups**

Advanced **Account Management** enables administrators to set authority groups for access to features of the MX-6500N/7500N. Administrators can control which department, for instance, has full access to copying, printing and/or scanning. Walk-up users enter a code, Local Name and Password, or LDAP User Authentication to access the features assigned to their group.

### **Data Encryption and Overwrite**

To help protect your data, the MX-6500N/7500N can encrypt document data using AES (Advanced Encryption Standard) **256-bit encryption**. The MX-6500N/7500N can also erase the temporary memory on the hard drive by overwriting the encrypted data up to seven times, offering an unprecedented level of assurance. A convenient **End-of-Lease feature** overwrites all data, including the Document Filing area, user data, job status data and address book.

### **Network Scanning Access Control**

To help protect your network from unauthorized e-mail communications, the MX-6500N/7500N supports **User Authentication**, requiring users to login before performing any network scanning operations.

### **Control Device Access Over the Network**

To help restrict access to the device over the network, the MX-6500N/7500N offers IPsec, SMB and extended support for **SSL Encryption** (Secure Sockets Layer), **IP/MAC** address filtering, IEEE 802.1x authentication, protocol enable/disable and port management for maximum security.

### **Documents Remain Confidential**

The MX-6500N/7500N offers **Confidential Printing**, which when used, requires users to enter a PIN code in order to print a queued document. To help protect your direct-print documents from unauthorized viewing, the MX-6500N/7500N offers encrypted PDF printing and scanning.

### **Tracking and Auditing Information**

Legislation and industry policies require companies to be more aware of information flow from their offices. Sharp offers both built-in and additional hardware/software which allows users to **control, access** and **track usage** of each device on the network.

### **Data Security Kit (Optional)**

For maximum protection, the optional data security kit offers additional features, such as **Data Overwrite on-demand** and at power up, Document Filing access control, **Incorrect Password Lockout** and Restricted Status Display and Restricted List printing.

These scalable security offerings aim to protect your intellectual property, preserve confidential information and help your business to meet regulatory requirements, such as the Health Insurance Portability and Accountability Act (HIPAA) and the Gramm-Leach-Bliley Act (GLB). For additional information visit: [www.sharppusa.com/security](http://www.sharppusa.com/security).





## COMMITTED TO HELPING PROTECT THE ENVIRONMENT

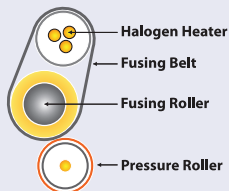


### Advanced Energy Saving Features

The MX-6500N/7500N utilizes several energy efficient technologies to minimize power consumption and maximize energy savings.

- An LED exposure lamp reduces power significantly when compared to conventional exposure lamps.
- A customizable seven-day power management scheduler allows businesses to define the days and times when power will be turned on and turned off.
- Sharp's Auto Power Management function allows the device to be set to shut off automatically based on usage trends.
- Sharp's Eco-Scan mode can shut off the fuser when scanning documents, previewing images, faxing and other operations.

State-of-the-art belt fusing system consumes less power and shortens warm up time.



Sharp's environmental initiatives and dedication to developing energy efficient document systems set a high standard for the industry.

### An Environmentally Responsible Approach to Product Design

The MX-6500N/7500N Pro Series Color Document Systems utilize Sharp's advanced **micro-fine toner technology**, which offers a lower consumption rate and produces less waste than conventional toners, resulting in longer replacement intervals. Sharp supplies are packaged using fully **recyclable materials**. Long-life consumable parts help minimize service intervals and downtime, resulting in lower operating costs. With two different energy saving modes, power can be reduced or shut off at set intervals. All Sharp document systems are **ENERGY STAR® qualified** and **RoHS compliant** to restrict the use of hazardous substances.

### Toner Recycling Program

As part of our commitment to helping preserve the environment, Sharp offers our customers zero-waste-to-landfill recycling for all Sharp consumables, including cartridges, bottles, toner collection containers and drum units. Sharp encourages customers to recycle their used Sharp toner cartridges in bulk by providing a pre-paid Recycling Kit for their return to our facility.

### Environmental Leadership

As a testament to our commitment to the environment, Sharp is a multi-year winner of the **ENERGY STAR®** annual **Excellence in Energy Proficiency Product Design**. Sharp is also a multi-year winner of the **SmartWay<sup>sm</sup> Excellence Award**, which recognizes companies for conserving energy and lowering greenhouse gas emissions in logistics and transportation. Sharp was also a previous recipient of the **Excellence in Partnership Green Contractor Award** and the **Evergreen Award** from the General Services Administration (GSA) and the Coalition for Government Procurement. These awards recognize environmentally responsible businesses and their efforts on recycling, waste reduction and affirmative procurement practices.

### Global Initiatives

Sharp is committed to environmental sustainability and corporate responsibility including planning, design, manufacturing, distribution and product end-of-life management. For more information about Sharp's environmental leadership including information about energy efficient products, electronics or toner cartridge recycling, please visit [www.sharpusa.com/environment](http://www.sharpusa.com/environment).

# MX-6500N/7500N SPECIFICATIONS

## Main Specifications

<b>MX-6500N/ MX-7500N</b>	Base models include, 150-sheet DSPF, 3,000-sheet paper capacity, 1-TB hard disk drive, PCL6/Adobe® PostScript® 3™ color printing, color network scanning, web browser and swing-out keyboard. Includes Application Communication Module and External Accounting Module.	
<b>Type</b>	Light production, color multi-function digital document system	
<b>Display</b>	15.4" (diagonally measured) color dot matrix high-resolution touch panel tilting display. 1280 x 800 dots (WXGA)	
<b>Functions</b>	Copy, print, network print, network scan and document filing <sup>1</sup>	
<b>Copy System</b>	Dry electrostatic transfer/Dual component developer/Magnetic brush development/OPC/Belt fusing/White LED exposure	
<b>Original Size</b>	Max. 11" x 17" sheets and bound documents	
<b>Copy Size</b>	Min. 5½" x 8½" (paper), Max. 13" x 19" (paper)	
<b>Printable Area</b>	Max. 13" x 19"	
<b>Copy Speed</b>	65/75 ppm B&W/Color (8½" x 11")	
<b>Multiple Copy</b>	Max. 9999 copies	
<b>First Copy Time (in Seconds)<sup>2</sup></b>	MX-6500N	MX-7500N
	B&W	Color
	4.0	5.6
	3.7	5.1
	DSPF	6.5 9.2
	6.3	8.8
<b>Warm Up Time</b>	90 seconds <sup>2</sup>	
<b>Magnification</b>	25% to 400% in 1% increments (with DSPF 25%-200%)	
<b>Original Feed</b>	150-sheet DSPF	
<b>Scan Speed</b>	DSPF Scan: Up to 150 IPM <sup>2</sup> (Monochrome); Up to 150 IPM <sup>2</sup> (Color)	
<b>Original Sizes</b>	5½ x 8½", 8½" x 11", 8½" x 11" R, 8½" x 14", 11" x 17"	
<b>Paper Capacity</b>	Std. 3,000 sheets/max. 13,500 sheets	
<b>Paper Feed Sizes</b>	Standard: Tandem Tray 1 - 1200 sheets (letter size), Tandem Tray 2 - 800 sheets (letter size), Trays 3/4 - 500 sheets ea. (letter/legal/ledger/statement/12" x 18"). Optional: Bypass Tray (for machine) - 100 sheets (letter/legal/ ledger/statement/envelope/12" x 18", 13" x 19"), Bypass (for LCT) - 500 sheets (letter/legal/ ledger/statement/12" x 18", 13" x 19"), LCT (2-Drawer) - 2,500-sheets each drawer (letter/legal/ledger/ 12" x 18", 13" x 19"), Letter LCC - 3,500 sheets (letter), Ledger LCC: 3,000 sheets (letter/legal/ ledger, 12" x 18", 13" x 19").	
<b>Paper Weights and Types</b>	Tandem Trays - 16-28 lb. bond (60-105 gsm), Trays 3/4 - 16 lb. bond to 100 lb. bristol (60-220 gsm), Multi-bypass Tray (for machine) - 15 lb. bond to 110 lb. cover (55-300 gsm), Multi-bypass Tray (for LCT) - 15 lb. bond to 100 lb. bristol (55-220 gsm), LCT (2-drawer) - 15 lb. bond to 110 lb. cover (55-300 gsm), Letter/Ledger LCC - 16 lb. bond to 100 lb. bristol (60-220 gsm). Includes thin, plain, recycled, color, letter head, pre-printed and pre-punched, embossed and glossy paper.	
<b>Duplexing</b>	Standard automatic duplex copying and printing, supports up to 110 lb. cover (300 gsm)	
<b>CPU</b>	Multi-Processor Controller	
<b>Interface</b>	RJ-45 Ethernet (10/100/1000Base-T), USB 2.0 (2 host ports, front and rear), USB 2.0 (1 device port)	
<b>Memory</b>	Standard 5 GB	
<b>Hard Disk Drive</b>	1 TB	
<b>Copy Resolution</b>	B&W: 1200 x 1200 dpi (max.), Color: 600 x 600 dpi (max.)	
<b>Color Modes</b>	Photo, Full Color Mode, Monochrome (B/W)	
<b>Exposure Control</b>	Modes: Text, Text/Photo, Text/Printed-Photo, Printed-Photo, Photo, Map, Pale-Color . Settings: Auto or 9 step manual	
<b>Halftone</b>	256 gradations/2 levels (monochrome)	
<b>Copy Features</b>	Electronic sort, Auto Color Sensing, Auto Paper Selection, Auto Magnification Selection (AMS), image preview/edit, auto tray switching, rotate copy, reserve copy, tandem copy, book copy, margin shift, edge/center erase, book divide, dual page, cover/insert page, OHP insert, job build, card shot, blank page skip, mirror/reverse, proof, watermark, custom image, job programs.	
<b>Account Control</b>	Up to 1000 users. Supports user-number authentication (on device), login name/password or login name/password (via LDAP server) for Copy, Print, Scan, Fax and document management.	
<b>Output Capacity</b>	Main output tray (top) 250 sheets (face down)	
<b>Firmware Management</b>	Flash ROM (USB), network update capability and 1 to N update with SRDM (Sharp Remote Device Management)	
<b>Configuration</b>	Web-based management with user/administrator level login, cloning (1 to N) with SRDM and remote front panel access	
<b>Service/Functions</b>	Remote front panel, access to service logs and click counts	
<b>Accessibility</b>	Tilt Front Panel, Adjustment of Key Touch-Send and Speed, Document Feeder Free Stop, Job Programs, Remote Front Panel, Universal Grip for Paper Trays, and Disable Screen Timeout	
<b>Environmental Standards</b>	International Energy Star Program Ver. 1.2, Law on Promoting Green Purchasing, European RoHS	
<b>Pwr. Source</b>	AC 208-240 VAC, 60 Hz, 20 Amps	
<b>Pwr. Consumption</b>	Maximum: 2880w or less	
<b>Weight</b>	MX-6500N/7500N: Approx. 490 lbs.	
<b>Dimensions</b>	Approx. 33 1/4" (w) x 33 1/4" (d) x 48" (h)	

## Network Printing System (Standard)

<b>PDL</b>	Standard PCL® 6 compatible Adobe®, PostScript® 3™, optional XPS
<b>Resolution</b>	1200 x 1200 dpi/8-bit processing
<b>Print Speed</b>	65/75 pages per minute (8½" x 11")
<b>Print Drivers</b>	Windows Server® 2003-2008, Windows XP, Windows XP x64, Windows Server 2003-2008 x64, Windows Vista®, Windows Vista® x64, Windows 7, Windows 7 x64, Windows 8, Windows 8 x64, MAC OS X (including 10.4, 10.5, 10.6, 10.7), all MAC PPD.
<b>Features</b>	Auto configuration, continuous printing, edge to edge printing, electronic sorting, N-up printing, duplex printing, transparency inserts, margin shift, image rotation, different cover page, poster print, job bypass print, job retention, confidential print, proof print, user authentication, image stamp and watermarks. Additional features: Multiple pamphlet print, network tandem print, carbon copy print mode, different cover page/last page/ other page, form overlay, tab paper settings, tab printing, chapter inserts and page Interleave <sup>1</sup>
<b>Direct Printing</b>	File Types: TIFF, JPEG, PCL, PRN, TXT, PDF, Encrypted PDF, PostScript and Windows XPS <sup>1</sup> (FTP, Web page, E-mail and USB)
<b>Resident Fonts</b>	80 outline fonts (PCL), 136 fonts (PS)
<b>Interface</b>	RJ-45 Ethernet 10/100/1000 Base-T, USB 2.0
<b>Operating Systems</b>	Windows Server 2003-2012, Windows XP, Windows Vista, Windows 7, Windows 8, MAC OS X10.4, X10.5, X10.6, X10.7, X10.8, Novell® Netware® Unix®, Linux® and Citrix® (XenApp 5.0 6.0, 6.5) and Windows Terminal Services, SAP device types. <sup>1</sup>
<b>Network Protocols</b>	TCP/IP (IPv4, IPv6, IPSEC) SSL (HTTP, IPP, FTP), SNMPv3, SMTP, POP3, LDAP, 802.1x for Windows and Unix. LPD and LPR for Unix. IPX/SPX <sup>1</sup> for Novell environments. EtherTalk®, AppleTalk® for Macintosh® environments. <sup>1</sup>
<b>Printing Protocols</b>	LPR, IPP, IPPS, PAP, Raw TCP (port 9100), FTP and Novell Pserver/Printer
<b>Network Security</b>	IP/MAC address filtering, protocol filtering, port management, user authentication and document authentication. <sup>1</sup>
<b>Security Stds.</b>	IEEE-2600™-2008, DoD (NSTISSP) #11, CAC/PIV access control <sup>1</sup>

## Network Scanning System (Standard)

<b>Scan Modes</b>	Standard: Color, monochrome, grayscale
<b>Original Size</b>	11" x 17" (Max.)
<b>Resolution</b>	600 dpi
<b>Output Modes</b>	600 dpi, 400 dpi, 300 dpi, 200 dpi, 150 dpi, 100 dpi
<b>Image Formats</b>	Monochrome: TIFF, PDF, PDF/A, Encrypted PDF, Compact PDF, XPS; Color: Grayscale, Color TIFF, JPEG, PDF, Encrypted PDF, XPS
<b>Image Compression</b>	Color/Grayscale: JPEG (high, middle, low), Compact PDF
<b>Scan Dest.</b>	E-mail, FTP, Folder (SMB), USB
<b>One-touch Dest.</b>	Up to 2000 (combined scan destinations)
<b>Group Dest.</b>	Up to 500
<b>Programs</b>	48 (combined)
<b>Max. Jobs</b>	Up to 100
<b>Protocols</b>	TCP/IP and SSL (includes HTTP, SMTP, LDAP, FTP, POP3), SMB, ESMTMP and 802.1x.
<b>Network Security</b>	E-mail server user authentication for LDAP and Active Directory

## Fiery Color Print Server (Option)

<b>Server Type</b>	External Server
<b>System Software</b>	Fiery FS100 Pro
<b>CPU Type</b>	Intel® Core™ i5-2400
<b>CPU Speed</b>	3.1 GHz
<b>Memory</b>	4 GB RAM
<b>Hard Disk Drive</b>	1 TB
<b>Operating System</b>	Windows 7 Professional for Embedded Systems x32/x64
<b>Network Conn.</b>	RJ45 10/100/1000 Base-T
<b>Pwr. Source</b>	100-240 VAC, 50/60 Hz, 6A
<b>Pwr. Consumption</b>	125w (Typical)/350w (Max.)
<b>Dimensions</b>	Approx. 8 1/2" (w) x 14" (d) x 19 1/4" (h)
<b>Weight</b>	Approx. 43 lbs.
<b>Options</b>	Fiery Color Profiler Suite, Fiery Graphic Arts Package Premium Edition, Fiery JobMaster™, Fiery Impose, Fiery Compose, Fiery JobFlow™, Fiery Impose-Compose, Fiery JobMaster-Impose, EFI ES-2000 Spectrophotometer, Fiery Central, Removable Hard Disk and FACI Kit (Fiery Integrated Workstation)

## inserter (Option)

<b>Paper Capacity</b>	Upper Tray: 200 sheets; Lower Tray: 200 sheets (20 lb. bond)
<b>Paper Weight</b>	16 lb. bond to 100 lb. Bristol (Paper feeding)
<b>Paper Size</b>	Up to 13" x 19"
<b>Power Cons.</b>	70w or Less
<b>Power Source</b>	24 Volts (Supplied by Main Unit)
<b>Dimensions</b>	21 1/2" (w) x 30" (d) x 50 1/2" (h)
<b>Weight</b>	Approx. 51 lbs.

## 4K 100-Sheet Stapler/Finisher (Option)

<b>Type</b>	4,000-sheet console stapler finisher (100-sheet stapling)
<b>Output Trays</b>	Upper tray: Moving offset tray (up to 1,500 letter size sheets) Middle tray: 250 sheets (letter size, non-stapled) Lower tray: Moving offset tray (up to 2,450 letter size sheets)
<b>Staple Capacity</b>	Up to 100 sheets (letter/statement)
<b>Staple Media</b>	Plain paper, letter/legal/ledger size or mixed
<b>Staple Positions</b>	1 front, 1 rear, or 2 point stitching
<b>Pwr. Source</b>	120 VAC, 60 Hz, 15 Amps
<b>Pwr. Consumption</b>	200w/350w with MX-FD10
<b>Weight</b>	Approx.: 134.5 lbs.
<b>Dimensions</b>	Approx.: 30 3/4" (w) x 30" (d) x 41" (h) (with tray extended)

## 4K 100-Sheet Stapler/Saddle Stitch Finisher (Option)

<b>Type</b>	4,000-sheet console saddle-stitch finisher (100-sheet stapling)
<b>Output Trays</b>	Upper tray: Moving offset tray (up to 1,500 letter size sheets) Middle tray: 250 sheets (letter size, non-stapled) Lower tray: Moving offset tray (up to 2450 letter size sheets)
<b>Staple Capacity</b>	Up to 100 sheets (letter/statement)
<b>Staple Media</b>	Plain paper, letter/legal/ledger size or mixed
<b>Staple Positions</b>	1 front, 1 rear, or 2 point stitching
<b>Saddle Stitch</b>	Center stitch/center fold (2 staples) letter/legal/ledger sizes
<b>Saddle Stitch Max. Sets</b>	Up to 5 sets (16-20 sheets)/10 sets (11-15 sheets per set)/15 sets (6-10 sheets per set)/25 sets (1-5 sheets per set)
<b>Pwr. Source</b>	120 VAC, 60 Hz, 15 Amps
<b>Pwr. Consumption</b>	200w/350w with MX-FD10
<b>Weight</b>	Approx.: 134.5 lbs.
<b>Dimensions</b>	Approx.: 30 3/4" (w) x 30" (d) x 41" (h) (with tray extended)

## Optional Equipment

<b>MX-LC12</b>	3,500-sheet Large Capacity Cassette (letter) <sup>1</sup>
<b>MX-LC13</b>	5,000-sheet Large Capacity 2-Drawer Air-Feed Tray (ledger) <sup>1</sup>
<b>MX-LCX3N</b>	3,000-sheet Large Capacity Cassette (ledger) <sup>1</sup>
<b>MX-MF10</b>	100-sheet Multi-bypass Tray (for machine)
<b>MX-MF11</b>	500-sheet Multi-bypass Tray (for MX-LC13)
<b>MX-LT10</b>	Long Paper Feeding Tray (requires MX-MF10)
<b>MX-FN21</b>	4K Stacking 100-sheet Staple Finisher <sup>1</sup>
<b>MX-FN22</b>	4K Stacking 100-sheet Staple/Saddle Stitch Finisher <sup>1</sup>
<b>MX-CF11</b>	2-Tray Inserter Unit <sup>1</sup>
<b>MX-FD10</b>	Multi-folding Unit <sup>1</sup>
<b>MX-ST10</b>	5,000-sheet Stacker (includes paper cart)
<b>MX-CA10</b>	Paper Cart (additional)
<b>MX-RB12</b>	Paper Pass Unit (for machine)
<b>MX-RB13</b>	Relay Unit <sup>1</sup>
<b>MX-RB14</b>	Paper Pass Unit (for MX-LC13)
<b>MX-RB15</b>	Curl Correction Unit <sup>1</sup>
<b>MX-RB17</b>	Large Capacity Tray Tandem Connecting Kit
<b>MX-TM10</b>	Trimmer Unit <sup>1</sup>
<b>MX-PN13B</b>	3-Hole Punch Unit (for MX-FN21/FN22)
<b>MX-SCX1</b>	Staple Cartridge (for MX-FN22)
<b>MX-SCX2</b>	Staple Cartridge (for MX-FN21/FN22)
<b>MX-TR14</b>	Right Side Exit Tray
<b>MX-TU14</b>	Center Exit Tray
<b>AR-SU1</b>	Stamp Unit (requires AR-SV1 Stamp Cartridge)
<b>AR-SV1</b>	Stamp Cartridge (required for AR-SU1)
<b>MX-PF10</b>	Bar Code Font Kit
<b>MX-PUX1</b>	XPS Expansion Kit
<b>MX-EB11</b>	Compact PDF Kit
<b>MX-PE10</b>	Fiery Color Print Server
<b>MX-PX10</b>	Fiery Interface Kit
<b>MX-EB15</b>	HDD Mirroring Expansion Kit
<b>MX-EC50</b>	CAC Reader (requires Data Security Kit)
<b>MX-BM50</b>	Plockmatic Booklet Maker
<b>MX-GBCX2</b>	GBC SmartPunch Pro
<b>MX-FR43U</b>	Commercial Data Security Kit (not available at time of launch)
<b>MX-AMX1</b>	Application Integration Module
<b>MX-SL10N</b>	Status Indicator
<b>DVENDPS</b>	Generic Vend Interface Kit

## Supplies

<b>MX-62NTBA</b>	Black Toner Cartridge
<b>MX-75NTCA</b>	Cyan Toner Cartridge
<b>MX-75NTMA</b>	Magenta Toner Cartridge
<b>MX-75NTYA</b>	Yellow Toner Cartridge
<b>MX-62NVBA</b>	Black Developer
<b>MX-62NVSA</b>	Cyan/Magenta/Yellow Developer
<b>MX-62NRSA</b>	Drum
<b>MX-700HB</b>	Toner Collection Container

<sup>1</sup> Some features may require optional equipment.

<sup>2</sup> Specification may vary depending on product configuration, machine settings and operating conditions.



SHARP ELECTRONICS CORPORATION  
1 Sharp Plaza, Suite 1  
Mahwah, NJ 07495-1123  
1-800-BE-SHARP • www.sharppusa.com

Design and specifications subject to change without notice. Sharp, Sharp OSA and all related trademarks are trademarks or registered trademarks of Sharp Corporation and/or its affiliated companies. Windows, Windows Server and Windows Vista are trademarks or registered trademarks of Microsoft Corporation. EFI, Fiery, Electronics For Imaging, the Fiery logo, the EFI logo, FreeForm, Spot-On, WebTools and Command WorkStation are trademarks or registered trademarks of Electronics For Imaging, Inc. All other trademarks are the property of their respective owner.

