



KONICA MINOLTA

TECHNOLOGY



bizhub® C368/C308/C258
COLOR MID-VOLUME MULTIFUNCTION PRINTERS



THE BIZHUB C368/C308/C258 DESIGNED TO HELP **ANY BUSINESS PERFORM AT ITS HIGHEST LEVEL.**

Superb performance. Secure.

With the most advanced mobile connectivity.

Who would think something so easy to use is also so productive?

Businesses of every size are always looking for ways to improve the way they work. At Konica Minolta, we're always innovating to help you do just that. The bizhub C368 series was built to give your organization exactly what you're looking for — productivity features that speed up output, make workflow faster and help you work the way we do today and in the future. The series features an embedded mobile touch area that allows you to pair smart devices so your mobile office workers can print and scan jobs right from their devices.

These powerful and affordable MFPs will wow you with their color quality. But it's the ease of use and simple integration into any working environment that you'll really enjoy. That's performance that puts your business first.



AT A GLANCE **bizhub C368/C308/C258**

- Speeds up to 36 ppm
- Large 9" customizable color panel with new mobile connectivity area (NFC)
- New DADF with enhanced reading sensor reduces feeding errors and paper jams
- Dual scanning up to 160 opm
- Max Paper Capacity: 6,650 sheets
- Standard web browser for easy Cloud connectivity
- i-Option capabilities for demanding applications
- Downloadable apps enhance functionality through Konica Minolta's award-winning MarketPlace

FEATURES THAT YOU'VE BEEN LOOKING FOR IN AN MFP.

KONICA MINOLTA SECURITY

When it comes to protecting confidential documents, there's no room for compromise, whether they are on the printer hard disk or in the output tray. With Konica Minolta, protection is ensured in various ways, including data encryption, secure deletion, watermark copy protection and PDF signatures.

VARIETY OF MFP FEATURES AND INTUITIVE OPERABILITY TO SUPPORT ANY KIND OF BUSINESS NEEDS

The 9-inch electrostatic operation panel provides smooth multi-touch and intuitive UI. It's as easy-to-use as a tablet, ensuring seamless operation between the MFP, PC, tablet, smartphone and other devices. And the user interface can be customized to suit your individual business needs in any number of ways. Your free Konica Minolta MarketPlace account provides access to tools you can use to further streamline your workflow.

I-OPTIONS FOR DEMANDING APPLICATIONS

Innovative i-Option capabilities for your bizhub MFP include PDF/A formatting and linearized PDF support, advanced PDF encryption for secure scanning applications, searchable PDF conversion, specialized barcode printing support and more. There's also an i-Option for Voice Guidance operation for the visually impaired.

COLLABORATION THROUGH ENHANCED SOLUTIONS THAT SUPPORT VARIOUS WORK STYLES

The bizhub C368 series also provides strong connectivity with mobile devices, Cloud service and third-party business applications. With standard web browser and IWS functions, users' business requirements will be fully covered with this powerful MFP.



PRODUCTIVITY FOR PERFORMANCE.

At Konica Minolta, our innovation comes from listening to our users and developing the solutions they need to do their jobs better. That's why we've updated the bizhub C368 series to make it work harder for you.

HIGH-SPEED COLOR SCANNING

The bizhub C368 series offers a choice of document feeders to meet a wide range of office needs. Double your scan speed with the optional dual scan document feeder, which scans at 160 originals per minute in duplex mode.

AUTOMATIC PAPER SIZE MEASUREMENT FOR NON-STANDARD PAPERS

The bizhub C368 series takes the guess work out of non-standard paper sizes. Simply load originals to the DADF or glass platen, then press the start button. The MFP automatically measures the size of paper and registers the measurement into the memory.

1200 DPI FOR BEAUTIFUL COLOR REPRODUCTION

With print resolution of 1200 dpi, the bizhub C368 series reproduces small text and fine lines with crisp clarity and detail. The thickening of lines that occurs during printing can be adjusted — so that any lines requiring precision and accuracy (for example, a narrow font or barcodes) can now be printed with sharp high definition.

IMPROVED SCANNING DOCUMENTS TO A COMPACT PDF

Now you can scan files to PDF format and not worry about running out of storage space. Image noise has been reduced and image quality has been improved while also producing smaller compact PDF file sizes.

CREATE A VARIETY OF PRINTED MATERIALS IN-HOUSE

The bizhub C368 series supports a wide range of high-level finishers for various types of outputs. Multiple finishing options. One single unit. Quickly mass-produce various types of outputs for added flexibility and cost reductions. The FS-536/536SD floor finisher with 50-sheet stapling, with binding, folding, hole punching, cover and inter sheet functions. A complete finishing solution.



POWERFUL FINISHING OPTIONS FOR ALL KINDS OF MEDIA.

The bizhub series has a robust variety of finishing capabilities to meet your needs.



Corner stapling



Two-point stapling



Two-hole punching



Three-hole punching



Duplex



Combined mixplex/mixmedia



Half-fold



Sheet insertion, report



Tri-fold



Booklet



Offset sorting



Banner printing

TECHNOLOGY THAT HELPS YOUR TEAM WORK SMARTER.

MOBILE PRINTING

The bizhub C368 series supports various mobile print technologies. It's flexible to suit your users' environment, such as Classic Google Print, which enables output outside the office; or Mopria, which is compatible with various manufacturers' printers.

The operation panel also includes a mobile touch area compatible with devices that support NFC (Near Field Communication). With PageScope Mobile you can:

- Pair immediately with the MFP
- Log into the unit if user authentication is set
- Print / scan

FLEXIBLE WIRELESS CONNECTIVITY

Wireless extension functions, AP mode and Wi-Fi Direct are supported, enabling an optimum setup to match any office network environment. Flexible support for BYOD and new connection environments can be built without making additional investments.

SUPPORTS HDD MIRRORING

HDD Mirroring is the real-time synchronization of main HDD and optional backup HDD. Risk of losing data is reduced significantly, even if the main HDD fails, as it automatically switches to the optional HDD.

WIDGETS

Users can paste text boxes, icons or GIF animation clips as widgets on the control panel. Advertisements and operating precautions can also be effectively displayed.

OPTIONAL EFI CONTROLLER FOR HIGHER IMPACT RESULTS

For graphics-intensive applications, the bizhub C368 series accepts an optional IC-416 Fiery Image Controller to manage color printing, color matching and advanced print queue control.

The IC-416 incorporates standard EFI Command Workstation functionality, Fiery Remote Scan and EFI WebTools. Standard Fiery VUE software helps you orchestrate all elements into a professional high-impact result. You'll be able to handle specific Pantone color requirements, manage print queues more effectively and fine tune color output to suit the needs of any job.

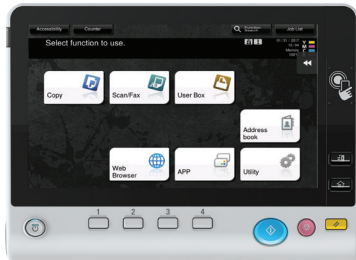
Fiery Graphic Arts Options also include auto trapping, hot folder printing with embedded job ticket settings, job setup with finishing options and imposition attributes for drag-and-drop printing. An optional Color Profiler suite allows you to create customized ICC profiles with CMYK devices.



At 9 inches, our enhanced multi-touch panel puts features and capabilities at your fingertips, transforming the panel into a tool you can customize specifically for your business needs.

CUSTOMIZE THE MAIN MENU

Up to 23 shortcut keys can be set in the main menu for quick and easy access to frequently used functions.



SLIDE MENU

The slide menu containing pre-registered frequently used features can be accessed from the right side of various screens.



KONICA MINOLTA MARKETPLACE

The Konica Minolta Marketplace enhances your MFP's capabilities with a number of workflow and communication apps designed for your business needs. Similar to those used on mobile devices, the apps can be accessed right from your MFP's touchscreen control panel. Find apps to support scanning and printing; or apps that can save time, speed work and make administrative tasks easier. Visit konicaminoltamarketplace.com for more information.



WEB BROWSER AND IWS FUNCTIONS

Allows users to access the web directly from the bizhub control panel. You can access HTTP pages, preview PDF files and search and view manuals written in HTML. This function is standard.



bizhub C368/C308/C258

COLOR MID-VOLUME MULTIFUNCTION PRINTERS

SYSTEM OVERVIEW

System memory	4 GB
System hard disk	250 GB Standard
Interface	10-BASE-T / 100-BASE-TX / 1,000-BASE-T Ethernet, USB 2.0
Network protocols	TCP/IP (IPv4/IPv6), SMB V2, LPD, IPP, SNMP, HTTP, HTTPS
Frame types	Ethernet 802.2, Ethernet 802.3, Ethernet II, Ethernet SNAP
Document feeder (optional)	Up to 100 originals / 5.5" x 8.5" to 11" x 17" / 35–163 gsm Reversing automatic document feeder or dual scan document feeder available
Printable paper size	Scanning/Copying: up to 11" x 17" Printing: up to 11" x 17" full bleed on 12" x 18" paper Custom paper sizes Banner paper max.: 11.75" x 47.25"
Printable paper weight	52–300 gsm
Paper input capacity	Standard: 1,150 sheets / Max.: 6,650 sheets
Tray 1	500 sheets / 5.5" x 8.5" to 11" x 17" / 52–256 gsm
Tray 2	500 sheets / 5.5" x 8.5" to 12" x 18" / 52–256 gsm
Tray 3 (optional)	500 sheets / 5.5" x 8.5" to 11" x 17" / 52–256 gsm
Tray 4 (optional)	2 x 500 sheets / 5.5" x 8.5" to 8.5" x 11" / 52–256 gsm
Large capacity tray LU-302 (optional)	3,000 sheets / 8.5" x 11" / 52–256 gsm
Large capacity tray PC-410 (optional)	2,500 sheets / 8.5" x 11" / 52–256 gsm
Manual bypass	150 sheets / 4" x 6" to 12" x 18" / custom paper sizes / 50–300 gsm
Automatic duplexing	5.5" x 8.5" to 12" x 18" / 52–256 gsm
Finishing modes	Offset, group, sort, staple, punch, half-fold, tri-fold, booklet
Output capacity	Max. with finisher: 3,300 sheets Max. without finisher: 250 sheets
Stapling (optional)	Max.: 50 sheets or 48 sheets + 2 cover sheets (up to 209 gsm)
Stapling output capacity	Max.: 1,000 sheets
Tri-fold (optional)	Up to 3 sheets
Tri-fold capacity	Max.: 30 sheets (tray)
Booklet (optional)	Max.: 20 sheets or 19 sheets + 1 cover sheet (up to 209 gsm)
Booklet output capacity	Max.: 100 sheets (tray)
Copy/print volume	Max.: 125,000 pages / 100,000 / 80,000 / month ¹
Toner lifetime	Black: 28,000 pages / CMY: 26,000 pages
Imaging unit lifetime	Black: 120,000 pages / 600,000 pages (drum / developer) CMY: C368 90,000 pages / 600,000 pages (drum / developer) CMY: C308 75,000 pages / 600,000 pages (drum / developer) CMY: C258 55,000 pages / 600,000 pages (drum / developer)
Power consumption	120 V / 60 Hz, less than 1.5 kW (system)
System dimensions	24.2" x 27" x 31" (W x D x H)
System weight	Approx. 187 lb.

COPIER SPECIFICATIONS

Copying process	Electrostatic laser copy, tandem, indirect
Toner system	Simitri HD Polymerized Toner
Print speed (8.5" x 11")	B&W / Color: up to 36 / 30 / 25 ppm (portrait)
Print speed (11" x 17")	B&W / Color: up to 18 / 15 / 15 ppm (portrait)
Autoduplex speed (8.5" x 11")	B&W / Color: up to 36 / 30 / 25 ppm (portrait)
1st copy out time	B&W: 5.3 / 5.6 / 6.1 sec. Color: 6.9 / 7.3 / 7.5 sec.
Warm-up time	Approx. 20 sec. ²
Copy resolution	600 x 600 dpi
Gradations	256 gradations
Multi-copy	1–9,999
Original format	Up to 11" x 17"
Magnification	25–400% in 0.1% steps, auto zooming
Copy functions	Electronic sorting, multi-job, adjustments (contrast, sharpness, image density), proof copy, interrupt mode, color mode, separate scan, sort/group, combination, original selection, ID card copy, 2-in-1, 4-in-1

PRINTER SPECIFICATIONS

Print resolution	1,800 (equivalent) x 600 dpi, 1,200 x 1,200 dpi
PDL	PCL6 (XL 3.0), PCL5c, PostScript 3 (ver. 3016), XPS
Operating systems	Windows (x32/x64): XP / Vista / 7 / 8 / 10 Windows Server (x32/x64): 2008 / 2008 R2 ³ / 2012 ³ / 2012 R2 Macintosh OS X 10.7 or later Linux / Citrix
Printer fonts	80 PCL Latin, 137 PostScript 3
Print functions	Direct Print of PCL, PS, TIFF, XPS, PDF, encrypted PDF files and OOXML (DOCX, XLSX, PPTX), mixmedia and mixplex, "Easy Set" job programming, overlay, watermark, copy protection, carbon copy print

PRINTER SPECIFICATIONS (OPTIONAL)

Print controller	Embedded Fiery IC-416
Memory/HDD	2 GB / 160 GB
PDL	PostScript 3 (ver. 3019), PCL 6/5c
Operating systems	Windows (x32/x64): XP / Vista / 7 / 8 Windows Server (x32/x64): 2003 / 2008 / 2008 R2 ³ / 2012 ³ Macintosh OS X 10.8 or later

SCANNER SPECIFICATIONS

Scan speed	B&W / Color: up to 160 ipm with optional DF-704
Scan resolution	Max.: 600 x 600 dpi
Scan modes	Scan-to-Email, Scan-to-SMB, Scan-to-FTP, Scan-to-Box, Scan-to-USB, Scan-to-WebDAV, Scan-to-DPWS, Network TWAIN scan
File formats	JPEG, TIFF, PDF, PDF/A 1a and 1b (optional), compact PDF, encrypted PDF and searchable PDF (optional), XPS, compact XPS, PPTX and searchable PPTX (optional), searchable DOCX/XLSX (optional)
Scan destinations	2,100 (shared with fax), LDAP support
Scan functions	Annotation (text/time/date) for PDF, up to 400 job programs, real-time scan preview

FAX SPECIFICATIONS

Fax	Super G3 (optional)
Transmission	Analog, Internet Fax, Color i-Fax, IP-Fax
Resolution	Max.: 600 x 600 dpi (ultra-fine)
Compression	MH, MR, MMR, JBIG
Modem	Up to 33.6 Kbps
Destinations	2,100 (single + group)
Functions	Polling, time shift, PC-fax, receipt to confidential box, receipt to email/FTP/SMB, up to 400 job programs

USER BOX SPECIFICATIONS

Storable documents	Max.: 3,000 documents or 10,000 pages
Type of user boxes	Public, Personal (with password or authentication), Group (with authentication)
Type of system boxes	Secure print, encrypted PDF, fax receipt, fax polling, annotation
User box functionality	Reprint, combination, download, sending (email/FTP/SMB and fax), copy box-to-box

SYSTEM FEATURES

Security	ISO 15408 EAL ⁴ , IEEE 2600.1 ⁴ , IP filtering and port blocking, SSL2, SSL3 and TLS1.0 network communication, IPsec support, IEEE 802.1x support, FIPS 140-2, User authentication, Authentication log Secure print, Hard disk overwrite (8 standard types), Hard disk data encryption (AES 128), Memory data auto deletion, Confidential fax receipt, Print user data encryption, Copy protection (Copy Guard, Password Copy) optional
Accounting	Up to 1,000 user accounts, Active Directory support, (user name + password + email + SMB folder), User function access definition, Optional Biometric authentication (finger vein scanner), Optional ID card authentication (ID card reader)
Software	PageScope Net Care Device Manager, PageScope Data Administrator, PageScope Box Operator, PageScope Direct Print, Print Status Notifier, Driver Packaging Utility, Log Management Utility

¹ Maximum monthly duty cycle describes the maximum number of pages a device can output on a monthly basis. This specification is a guideline intended to offer a comparison of durability as it relates to the entire Konica Minolta MFP and printer product line so that the appropriate device can be placed in order to meet customer needs.

² Warm-up time may vary depending on the operating environment and usage.

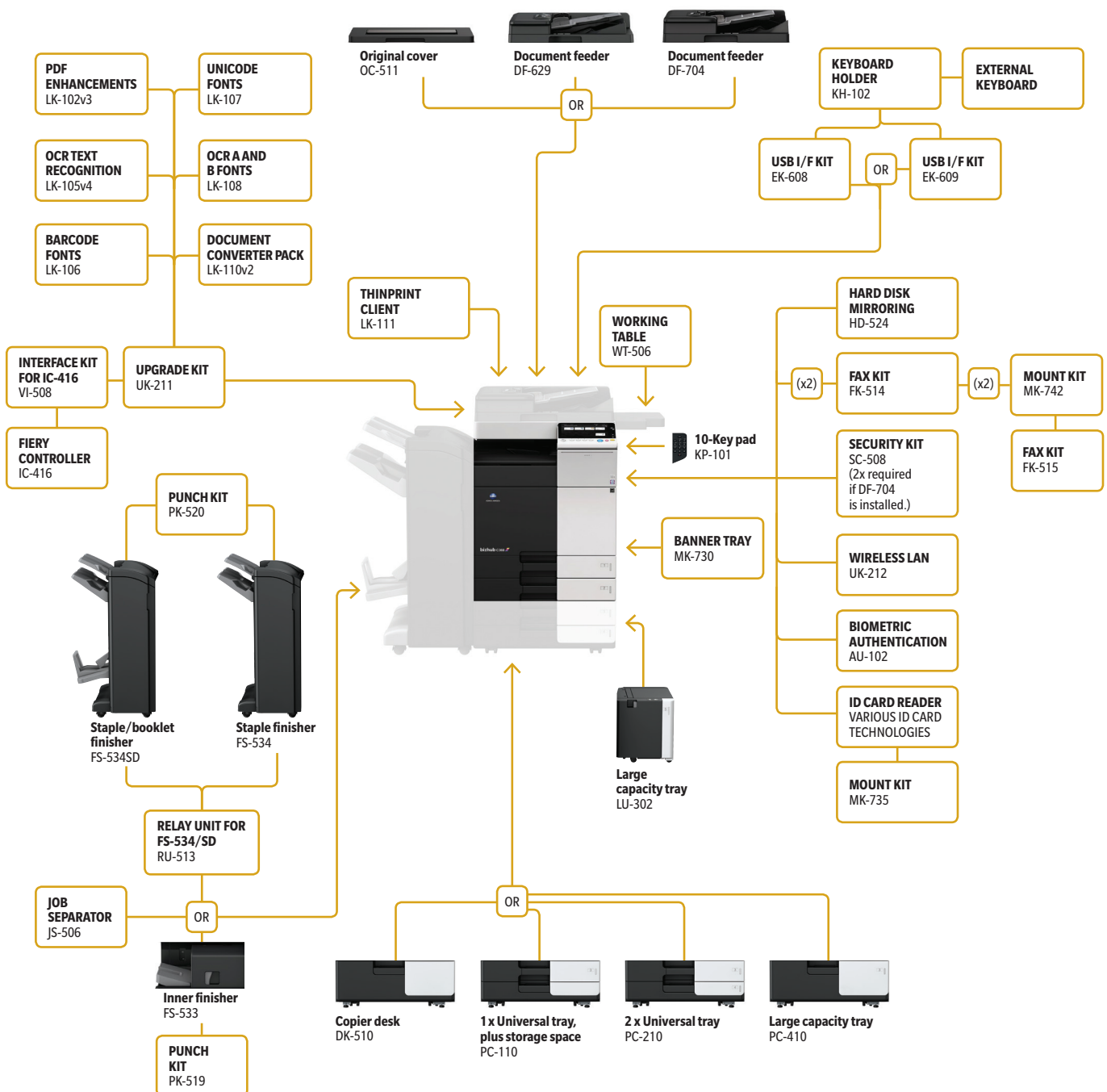
³ Supports x64 only.

⁴ Certification pending.

FLEXIBLE

TO SUPPORT THE CHANGING WAY YOU WORK.

Whether you're a small or medium business, the C368 series MFP performs in all kinds of business settings. It's designed with a number of flexible options to meet the demands of your busy office and growing needs of mobility, Cloud services and sustainability.





COMMITTED TO OUR WORLD.

Protecting the planet has always been a top priority at Konica Minolta. Our broad array of environmental initiatives will help you realize your own sustainability goals:

CLEAN PLANET

Our program provides cost-free recycling for all our consumables, including toner cartridge and bottles, imaging units, developer and drums with prepaid shipping labels and cost-free packaging. We can even arrange pick-up from high-volume users.

SUSTAINABILITY

Our exclusive Simitri HD toner formulation uses plant-based biomass material to reduce environmental impact. The latest bizhub models are EPEAT-Gold Certified and achieve among the lower power consumption rate of MFPs in their class. Energy saving modes reduce power consumption while maintaining fast first-copy output — and a unique Eco-indicator helps you monitor paper, toner and energy usage.

ECOVISION 2050

We're committed to a mid-century goal of reducing CO₂ emissions by 88% over 2005 levels, minimizing greenhouse gases that may contribute to global warming. We pursue that goal every day — minimizing energy consumption, cutting pollution and using recycled materials in construction.



For complete information on Konica Minolta products and solutions, please visit: CountOnKonicaMinolta.com



PARTNERSHIP

Konica Minolta can help give shape to your ideas and partner with you to achieve your corporate objectives. Contact us to realize opportunities in:

INFORMATION MANAGEMENT

- Enterprise Content Management (ECM)
- Document Management
- Automated Workflow Solutions
- Business Process Automation
- Security and Compliance
- Mobility
- eDiscovery Services

IT SERVICES

- Application Services
- Cloud Services
- IT Security
- Managed IT Services
- IT Consulting & Projects
- Business Consulting Services

TECHNOLOGY

- Office Multifunction Business Solutions
- Commercial and Production Printers
- 3D Printers
- Wide Format Printers
- Laptops, Desktops and Computer Hardware
- Servers and Networking Equipment
- Managed Print Services (MPS)
- Managed Enterprise Services



KONICA MINOLTA

KONICA MINOLTA BUSINESS SOLUTIONS U.S.A., INC.
100 Williams Drive, Ramsey, New Jersey 07446

CountOnKonicaMinolta.com



Item #: C368BROCH
11/2017-C