

Canon

imageRUNNER®
2230 / 3530



ACHIEVE MORE WITHOUT EXHAUSTING YOUR BUDGET.

A new lineup of powerful Canon
multifunction office systems
that can take your business to
a higher level.



Your growing business is unique. You need greater productivity as well as the flexibility to shape office solutions around your specific needs. That's why you need the Canon imageRUNNER 2230/3530 digital multifunction office systems.

Take command of your office productivity, starting with a standard copier configuration, and build a system to meet your printing, scanning, faxing, and document storage needs as your business dictates. The latest ImagePlatform architecture ensures concurrent processing of each task for maximum productivity every time, for every job.

And when the imageRUNNER 2230/3530 devices are fully connected to your network, all users can leverage system capabilities directly from their desktops through intuitively designed drivers—complete with finishing and paper supply functions. All this in an extremely compact, cost-effective system your business can count on.



INTRODUCING THE imageRUNNER 2230/3530

imageRUNNER 2230

With the ability to deliver output at 22 pages per minute, the compact imageRUNNER 2230 model is perfect for small businesses and workgroups.



imageRUNNER 3530

At 35 pages per minute, the imageRUNNER 3530 is an ideal solution for busier, medium-size offices and departments within larger corporations.

Feature	Standard Configuration	Available with optional Hard Disk and Additional Memory*
Memory Capacity	RAM: 128MB	RAM: 256MB Hard Disk: 20GB
Copy	Standard	Standard
Mail Box	Optional*	Standard
Network Print	Optional*	Standard (UFR II or UFR II/PCL 5e/6)
Network Scan	Optional*	Standard
Fax	Optional*†	Optional †

* Requires additional 20GB Hard Disk and 128MB RAM (ships with the UFR II/PCL Printer Kit-E2).

† Requires the Super G3 Fax Board-Q1 with optional 20GB Hard Disk and additional 128MB RAM to be installed.

A SINGLE DEVICE THAT CAN DO THE WORK OF MANY

In addition to enhancing productivity, the imageRUNNER 2230/3530 devices save space and reduce costs.

Compact, Durable Design

The incredibly compact imageRUNNER 2230/3530 models are built to accommodate busy office environments with limited space. High-yielding supplies and consumables keep running costs and downtime to a minimum for top-notch efficiency. And thanks to an easy-to-load bottle design, toner replenishment is quick and clean.

An optional 50-sheet Duplexing Automatic Document Feeder easily handles multiple-page originals so you can focus on other tasks. The system handles various paper formats, from A5-R to A3, with a maximum paper capacity of 2,250 sheets to keep your business moving. The imageRUNNER 2230/3530 devices also support a range of output options to increase productivity, including an innovative built-in finishing option that offers full sorting, stapling, and optional hole-punching, without taking up any extra space.

Ease-of-Use

The imageRUNNER 2230/3530 models are designed for easy operation at the device through an intuitive touch-screen panel or at a desktop using a Remote UI™** (User Interface) that allows users to control operations via their Web browser. Canon also provides a complete set of device management and monitoring utilities embodied in the NetSpot® Suite. As an ENERGYSTAR® qualified system, the imageRUNNER 2230/3530 systems are designed with the environment in mind.

Image of a Leader

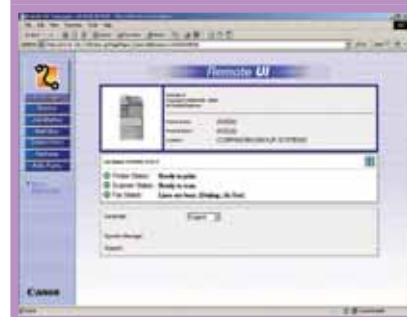
Canon continues to set new standards for quality, performance, and reliability. That's why you can trust Canon to provide you with solutions to make your business more productive and competitive.



Control Panel



Remote UI



**Requires UFR II/PCL Printer Kit-E2.

A FIRST IMPRESSION ALWAYS LASTS.

Make Your Business Stand Out From All the Others.

Produce High-Quality Digital Copies with Confidence

The imageRUNNER 2230/3530 models are designed to make your documents look their best. These systems can capture images at true 600 x 600 dpi resolution and produce high-quality output for both text and images—equivalent to 1200 x 600 dpi for copying and 2400 x 600 dpi for printing, with 256 gradations. Each model hosts a number of productivity-enhancing copy features that save time and money. Standard Automatic Duplexing provides two-sided printing to conserve time and paper. Also, with Canon's RAPID Fusing System™, warm-up times and energy consumption costs are kept to a minimum.

A Multifunctional Delight

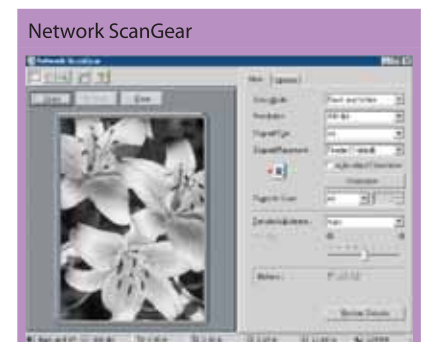
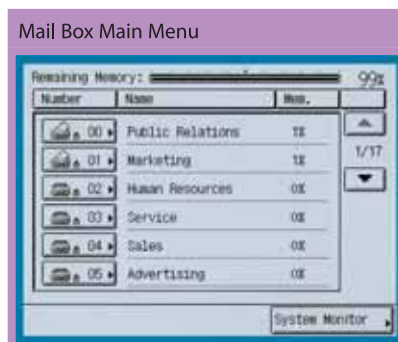
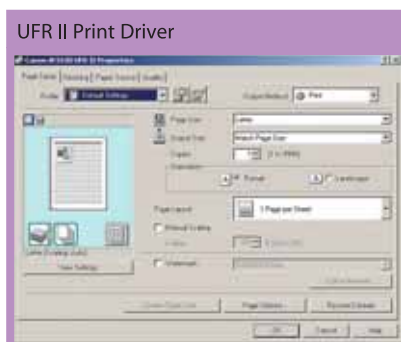
The imageRUNNER system, when equipped with an optional printer kit, is transformed into a productive multifunction device that can greatly improve your workflow. As networked printers, the imageRUNNER 2230/3530 devices support the latest Canon Ultra Fast Rendering II (UFR II) technology for fast document processing, and available support for popular PCL 5e/6 page description languages. And with the Canon

Network ScanGear utility** you can easily integrate scanned images with your documents using TWAIN-compatible software.

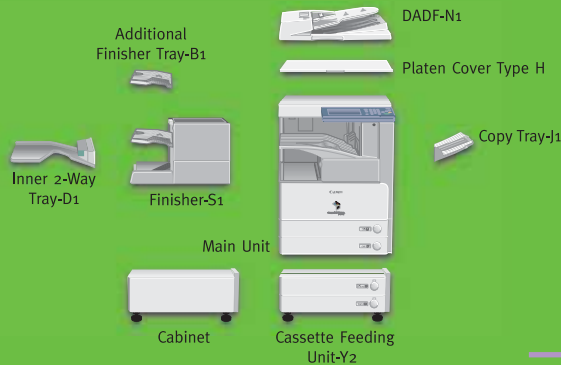
Innovative Mail Box features** provide the ability to store scanned documents and printed files directly into device memory for later use. Each Mail Box can be customized and password-protected for complete confidentiality.

Powerful Document Distribution

The imageRUNNER 2230/3530 systems can handle all your heavy-duty faxing needs when equipped with the optional Super G3 Fax Board.** Time-saving features include a high-capacity address book and auto-dialing to speed operation, as well as PC Fax capabilities that allow you to transmit fax documents easily from a networked computer.



**Requires UFR II/PCL Printer Kit-E2.



imageRUNNER®
2230 / 3530

imageRUNNER 2230/3530 Specifications

Type:	Digital, Multifunction Imaging System
Imaging System:	Laser Dry Electrostatic Transfer
Developing System:	Dry Mono Component Developing System
Fixing System:	RAPID Fusing System
Image Server Memory Standard:	128MB RAM
Optional:	256MB RAM/20GB HDD
First-copy Time imageRUNNER 2230:	4.9 Seconds from Platen Glass
	6.9 Seconds from Feeder
imageRUNNER 3530:	3.9 Seconds from Platen Glass
	5.9 Seconds from Feeder
Warm-up Time:	10 Seconds or Less from Sleep Mode
	15 Seconds or Less from Main Power Off
	30 Seconds or Less from Main Power Off when configured with either printer kit 22/35 ppm (A4)
Copy/Print Speed:	22/35 ppm (A4)
Max. Copy Reservation:	*5 Jobs
Actual Resolution:	600 dpi x 600 dpi
Interpolated Resolution:	1200 dpi x 600 dpi (Copy)
	2400 dpi x 600 dpi (Print)
Halftone:	256 Gradations of Gray
Duplexing:	Standard Automatic Trayless Duplexing
Magnification Reduction/Enlargement:	25% to 400%—Platen
	25% to 200%—Feeder (in 1% increments)
Exposure Control:	Automatic or Manual (9 Levels)
Paper Sources Standard:	Dual 550-sheet Paper Cassettes (1,100 Sheets)
	Stack Bypass (50 Sheets)
Optional:	Dual 550-sheet Cassette Feeding Unit (2,250 Sheets Max.)
Multiple Copies:	1 to 999
Paper Weights:	64-80 g/m ² (Cassette)
	64-128 g/m ² (Stack Bypass)
Network Interface Connections:	10/100Base-T (RJ-45)
Dimensions (H x W x D):	29-7/8" x 22-1/4" x 27-5/8" (761mm x 565mm x 700mm)
Installation Space: (W x D):	34" x 27-5/8"
Weight:	69kg
Power Requirements:	230V/6A/50Hz
Power Consumption:	1.35kW (Max.)

Drum:	Organic Photo Conductor (OPC)
Estimated Yield:	75,000 Impressions (2230)
	85,000 Impressions (3530)
Toner Yield:	21,000 @ 6% Coverage (2230)
	24,000 @ 6% Coverage (3530)

Optional Accessories

Duplexing Automatic Document Feeder-N1

Acceptable Originals:	A5 to A3
Capacity:	50 Sheets (80g/m ² /A4)
Max. Paper Weight:	42 to 128g/m ²

Cassette Feeding Unit-Y2

Paper Capacity:	Dual 550-sheet Paper Cassettes (1,100 Sheets/80g/m ²)
Acceptable Paper Sizes:	A5-R to A3
Acceptable Paper Weights:	64 to 80g/m ²

Inner 2-Way Tray-D1*

Number of Trays:	2 Trays
Tray Capacity:	250 Sheets (A4)
Lower Output Tray:	250 Sheets (A4)
Upper Output Tray:	100 Sheets (A4)

Acceptable Paper Sizes:	A5 to A3
Attachable Accessories:	Copy Tray-J1

Finisher-S1*

Number of Trays:	1 Tray (Second Tray Optional)
Tray Capacity:	1,000 Sheets (A4)
Non-collate, Collate, Group Mode:	1,000 Sheets
Staple Mode:	1,000 Sheets
Tray Capacity (with Additional Finisher Tray-B1):	300 Sheets per Tray (A4)
Non-collate, Collate, Group Mode:	300 Sheets
Staple Mode:	300 Sheets
Staple Position/Size:	Corner Stapling

Max. Stapling Capacity (Up to 20 lb. Bond):	50 Sheets (A4)
Attachable Accessories:	Additional Finisher Tray-B1
	Puncher Unit-Q1
	Copy Tray-J1

Copy Tray-J1 (option for Inner 2-Way Tray and Finisher-S1)

Tray Capacity:	150 Sheets (A4)
----------------	-----------------

Super G3 Fax Board-Q1

Applicable Line:	Public Switched Telephone Network (PSTN)
Connection Lines:	One

Sending/Original Sizes:	A5 to A3 (from Document Feeder)
Recording/Printing Sizes:	A5 to A3

UFR II/PCL Printer Kit-E2

Processor:	Canon Custom Processor—Shared
RAM:	256MB—Shared
Hard Disk:	20GB—Shared

PDL Support

UFR II Printer Kit-E3:	UFR II
UFR II/PCL Printer Kit-E2:	UFR II/PCL

Interface Connections

Standard:	10/100 Base-T (RJ-45), USB 2.0 High-speed
-----------	-------------------------------------------

Network OS:

Windows® 2000/XP	
Server 2003	
Macintosh® OS 10.1.5 or Later (PPD)	
Solaris™ 1.1x, 2.5x, or Later	
Novell® NetWare® v3.2, 4.1, 4.11, 4.2, 5, 5.1, 6, 6.5 (IPX/SPX™)	

Additional Optional Accessories and Utilities

Platen Cover Type H	
Envelope Feeder Attachment-C1	
Card Reader-C1	
Card Sets	
imageRUNNER Security Kit-A2	

* Requires 3-Way unit.

+ Requires optional iR System Expansion Kit-A1.

Canon

South & Southeast Asia Regional Headquarters

Canon Singapore Pte. Ltd.
1 HarbourFront Avenue
#04-01 Keppel Bay Tower
Singapore 098632
Tel: 65-6799 8888
Fax: 65-6799 8882
www.canon-asia.com

Canon Sales Subsidiaries & Business Partners

Afghanistan: TechZone Co. Ltd
3rd Floor, Shop No. 10-C
Computer City Plaza, Shah-Re-Naw
Kabul, Afghanistan
Tel: 93-794-040610 (sales)
Tel: 93-794-040620 (service)
Email: info@techzoneltd.com

Bangladesh: Flora Limited
Adamjee Court Annex-2 (4th Floor)
119-120 Motijheel Commercial Area
Dhaka 1000 Bangladesh
Tel: 880-2-716-2742-46 / 225
Fax: 880-2-955-0030
www.floralimited.com

Brunei: Interhouse Company
No. 5-7 Bunut Jaya Complex
Spg 574 Jalan Tutong BF1320
P.O. Box 423, Seri Complex
Bandar Seri Begawan BA 1779
Brunei Darussalam
Tel: 673-2-653 001
Fax: 673-2-653 003

Cambodia: Royal Cambodia Co., Ltd
#437 Preah Monivong Blvd
Phnom Penh
Kingdom of Cambodia
Tel: 855-23-428955
Fax: 855-23-722961

India: Canon India Private Limited
2nd Floor, Tower A & B
Cyber Greens, DLF Phase III
Gurgaon - 122002
Haryana, India
Tel: 91-124-516 0000
Tel: 91-124-516 0011
www.canon.co.in

Indonesia: PT Samafitro
Jalan Ir. H Juanda No.8
Jakarta 10120, Indonesia
Tel: 62-21-345 521
Fax: 62-21-384 4271
www.samafitro.co.id

Malaysia: Canon Marketing (Malaysia) Sdn. Bhd
Block D, Peremba Square
Saujana Resort Section U2,
40150 Shah Alam
Selangor Darul Ehsan, Malaysia
Tel: 60-3-7844 6000 / 7845 0055
Fax: 60-3-7844 6196 / 6198
www.canon.com.my

Maldives: Simdi Company Pvt Ltd.
No.3 Koli Umaru Maniku
Goalhi Male' 20-02
Republic of Maldives
Tel: 960-333 4421
Fax: 960-333 4424

Myanmar: Myanmar Golden Rock International Co., Ltd
Level 6, FJV Commercial Centre
No: 422-426, Strand Road
Botataung Township
Yangon, Myanmar
Tel: 95-1-202092 to 96
Fax: 95-1-202079
Email: sales@mgr.com.mm

Nepal: International Electronics Concern (P) Ltd
Kha 14 1st Floor
Haratibhawan Putalisadak
Ramshah Path, Kathmandu, Nepal
P.O. Box 12588
Tel: 977-1-442 1991
Fax: 977-1-442 1909

Pakistan: Shirazi Trading Company (Pvt.) Ltd
8th Floor, Adamjee House
11 Chundrigar Road
Karachi 74000 Pakistan
Tel: 92-21-241 7737
Fax: 92-21-242 0417
www.shirazitrading.com.pk

Sri Lanka: Metropolitan Office (Pvt.) Ltd
12, Magazine Road Colombo 08
Sri Lanka
Tel: 94-11-470 0200
Fax: 94-11-470 0267

Thailand: Canon Marketing (Thailand) Co. Ltd
10th Floor Bangkok City Tower
179/34-45 South Sathorn Road
Bangkok 10120
Tel: 66-2-344 9999
Fax: 66-2-344 9960
www.canon.co.th

Vietnam: Canon Singapore Pte Ltd
Ho Chi Minh City Representative Office
Unit 437-439-441 Hai Ba Trung Street
Ward 8 District 3, Ho Chi Minh City,
Vietnam
Tel: 848-820 0466
Fax: 848-820 0477

Hanoi City Representative Office
15 Nguyen Chi Thanh
Hanoi, Vietnam
Tel: 844-771 1677
Tel: 844-771 1678
www.canon.com.vn