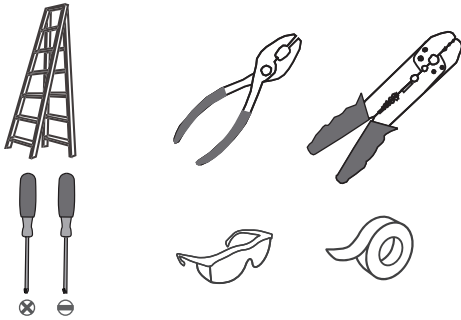
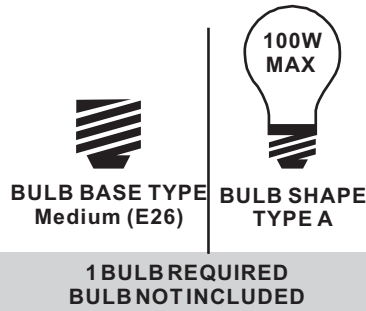


### Tools Required



### Light Source



### Fixture Height Adjustable 15.5" to 101.5"

#### ⚠ Warnings and Cautions

Turn off the electricity at the circuit breaker before installation. Consult a licensed electrician if in doubt about installation.

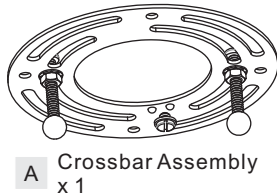
Turn off power to the fixture and allow the bulbs to cool before replacing.

### Package Contents

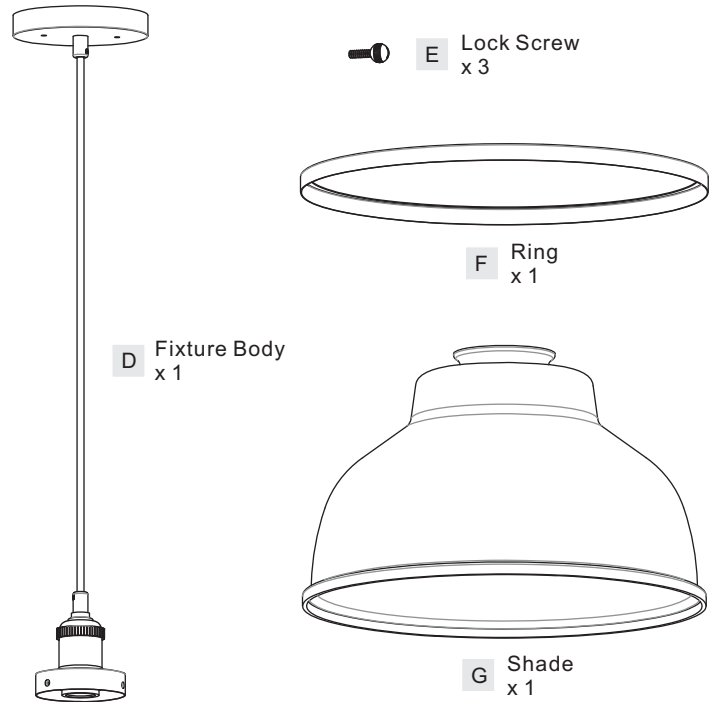
**Preparation:** Identify and inspect all parts before beginning the installation.

Missing or damaged parts? Contact your original place of purchase.

#### PARTS BAG



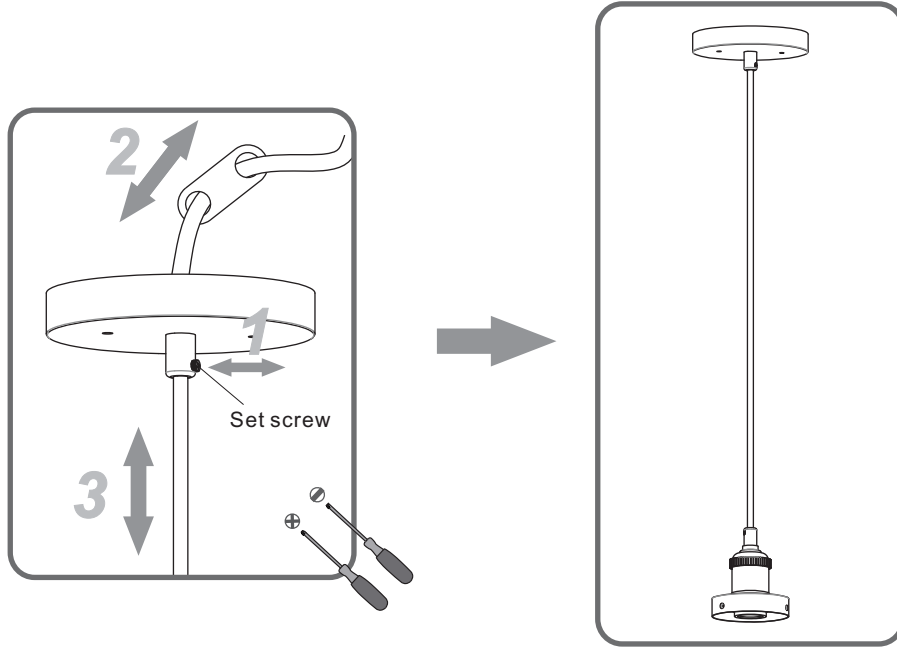
- B** Outlet Box Screw x 2
- C** Wire Connector x 3



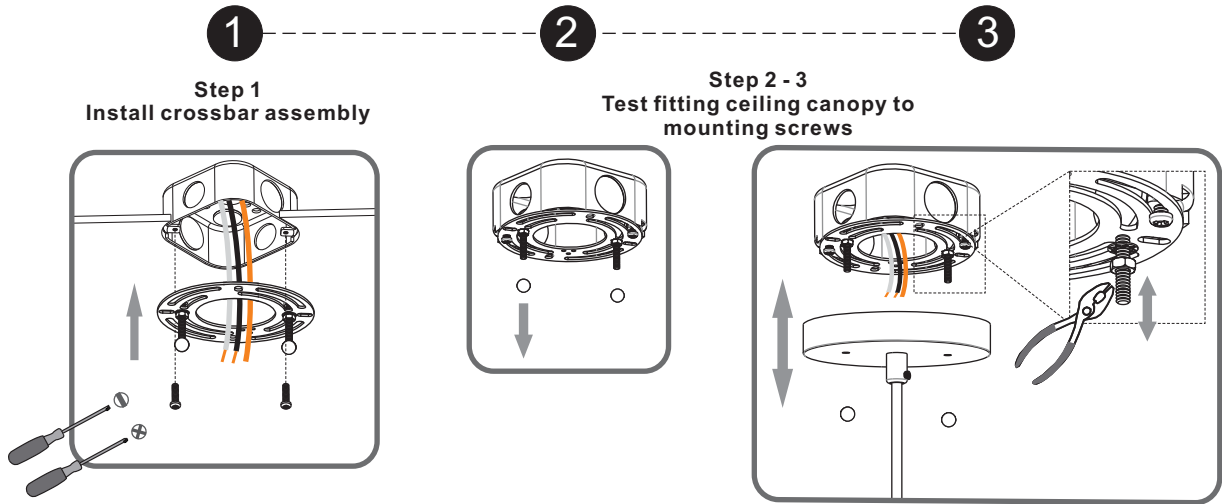
### Table of Contents

Adjust Cord	Crossbar	Wiring	Ceiling Canopy	Ring & Shade	Bulb
STEP 1	STEP 2	STEP 3	STEP 4	STEP 5	STEP 6

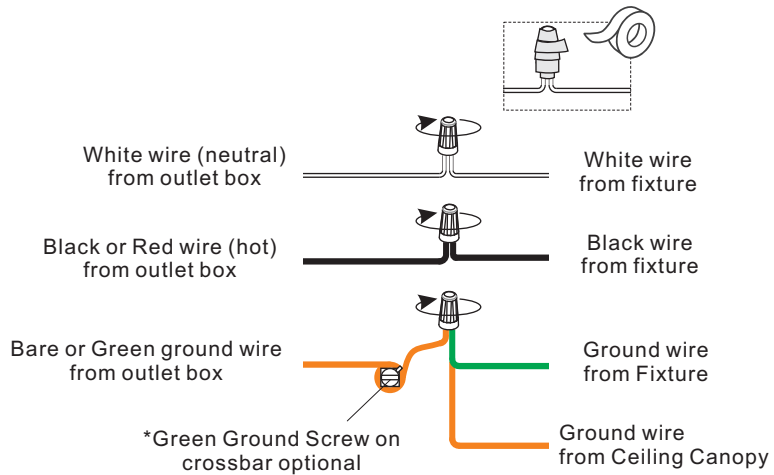
# STEP 1



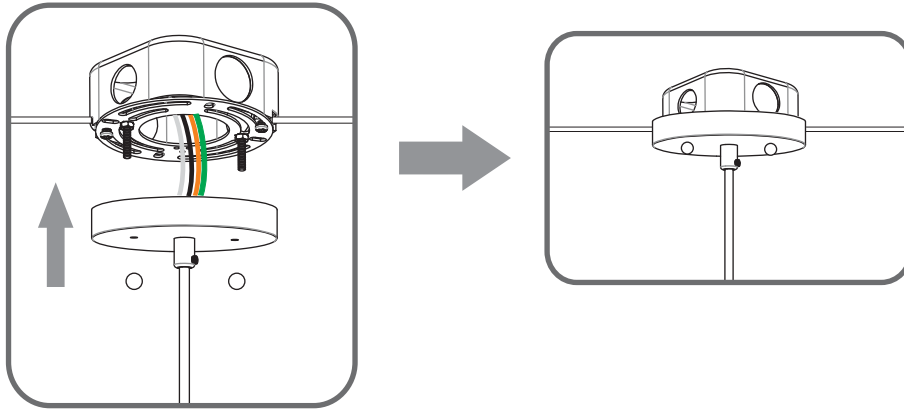
# STEP 2



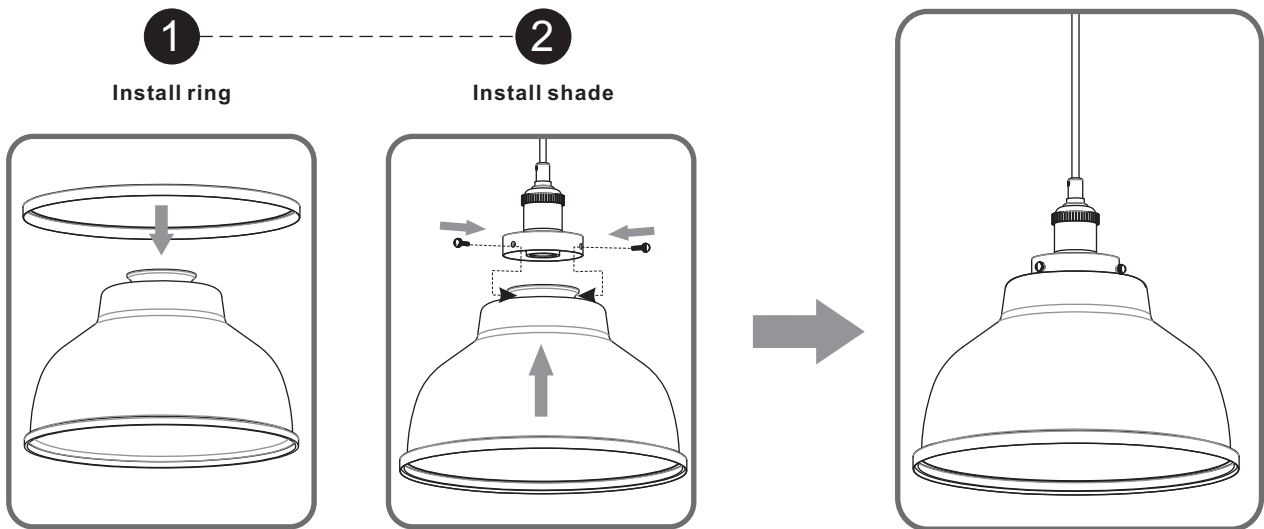
# STEP 3



**STEP 4**



**STEP 5**



**STEP 6**

