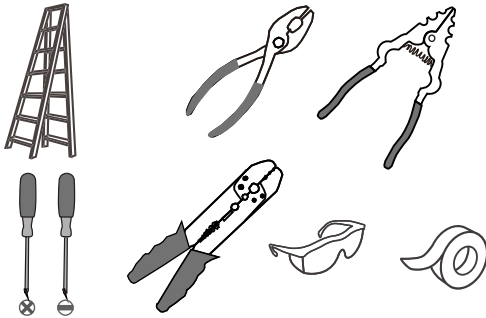
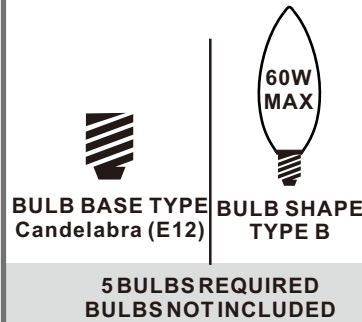


Tools Required



Light Source



Fixture Height Adjustable 29.5" to 77.5"

⚠ Warnings and Cautions

Turn off the electricity at the circuit breaker before installation. Consult a licensed electrician if in doubt about installation.

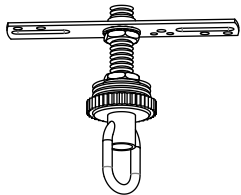
Turn off power to the fixture and allow the bulbs to cool before replacing.

Package Contents

Preparation: Identify and inspect all parts before beginning the installation.

Missing or damaged parts? Contact your original place of purchase.

PARTS BAG



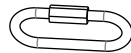
A Crossbar Assembly x 1



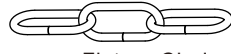
B Outlet Box Screw x 2



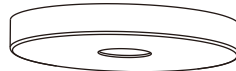
C Wire Connector x 3



D Quick Link x 2



E Fixture Chain x 1



F Ceiling Canopy x 1



G Fixture Loop x 1



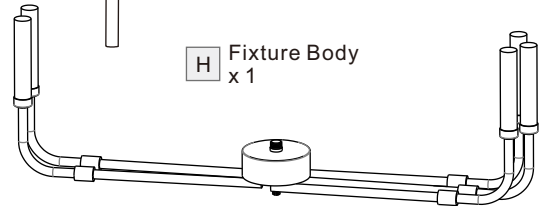
I Cap x 1



K Rod x 1



J Finial x 1

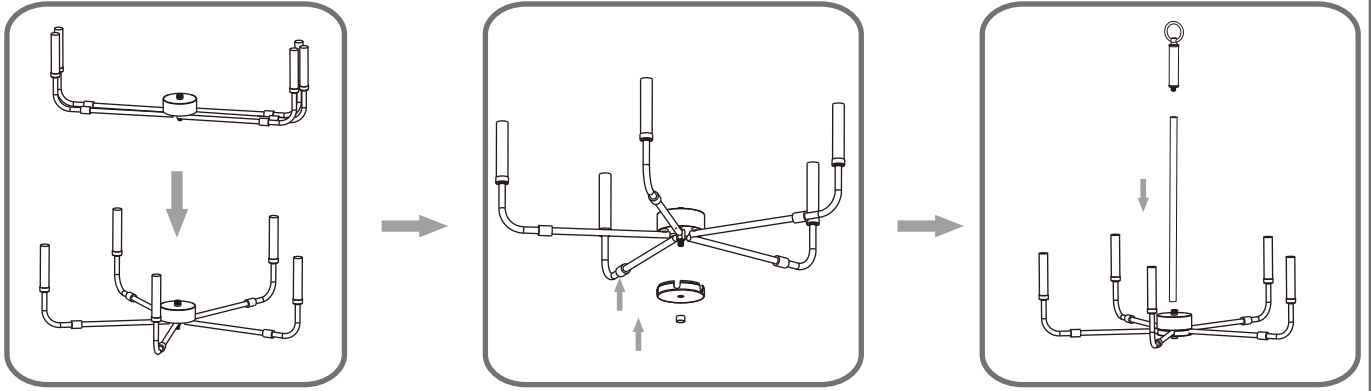


H Fixture Body x 1

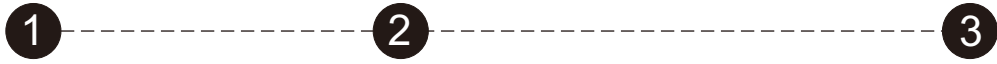
Table of Contents

| Fixture Loop | Crossbar Assembly | Fixture Chain | Wiring | Ceiling Canopy | Bulb |
|--------------|-------------------|---------------|--------|----------------|--------|
| | | | | | |
| STEP 1 | STEP 2 | STEP 3 | STEP 4 | STEP 5 | STEP 6 |

STEP 1

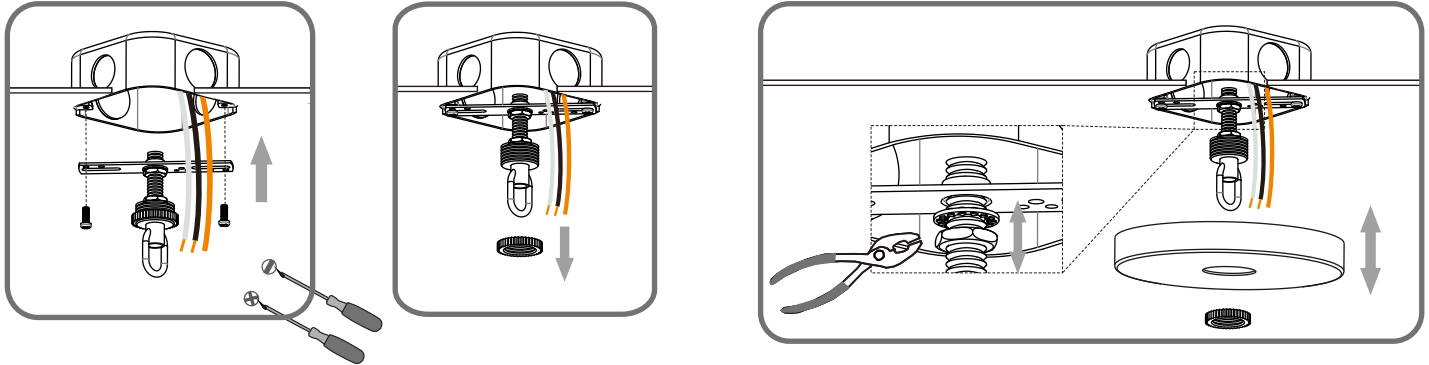


STEP 2



Step 1
Install crossbar assembly

Step 2 - 3
Test fitting ceiling canopy to nipple

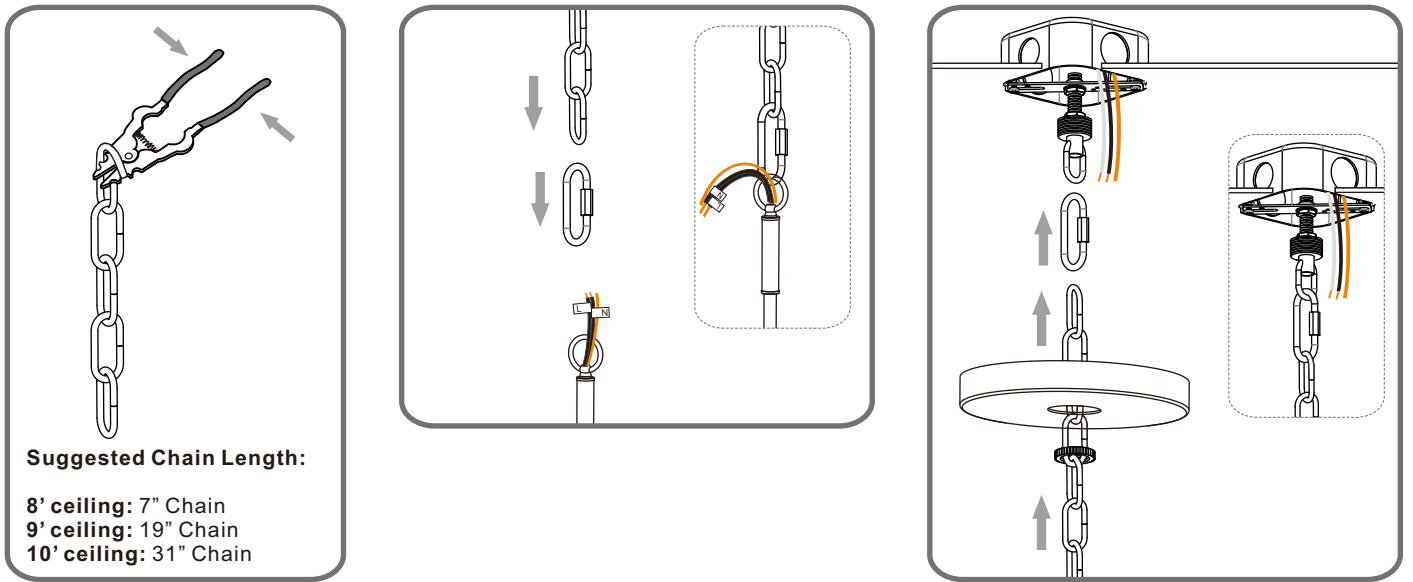


STEP 3



Step 1
Adjust fixture chain length

Step 2 - 3
Install Fixture Chain



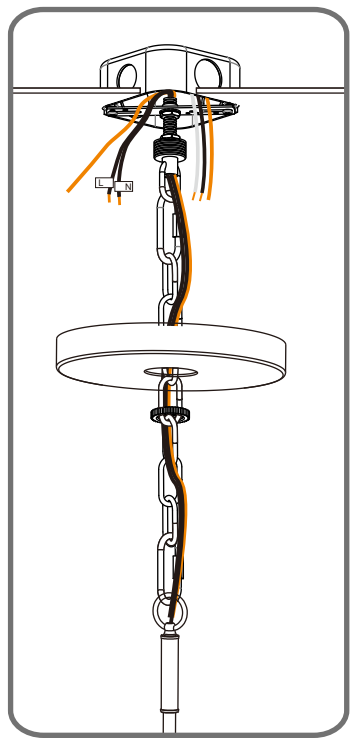
Suggested Chain Length:

- 8' ceiling: 7" Chain
- 9' ceiling: 19" Chain
- 10' ceiling: 31" Chain

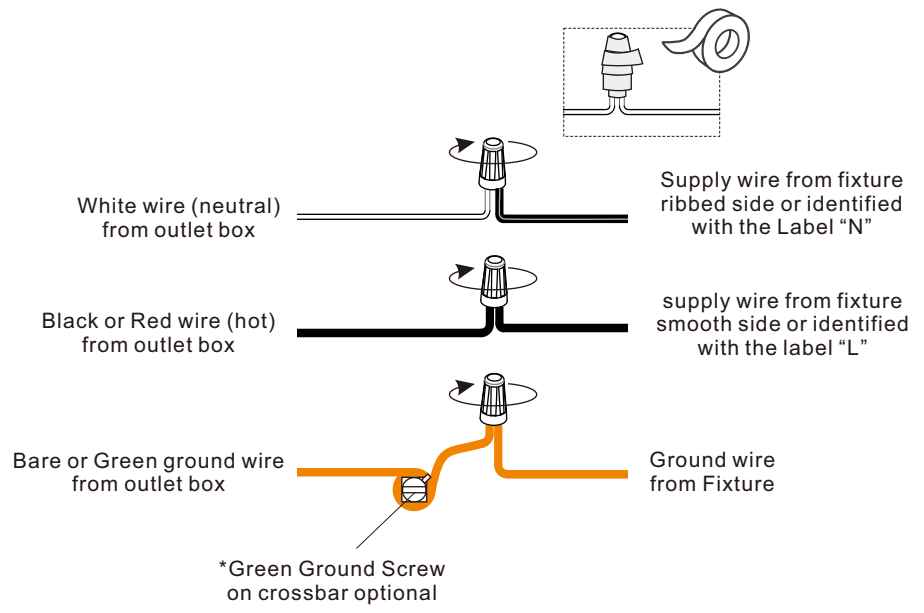
STEP 4

1

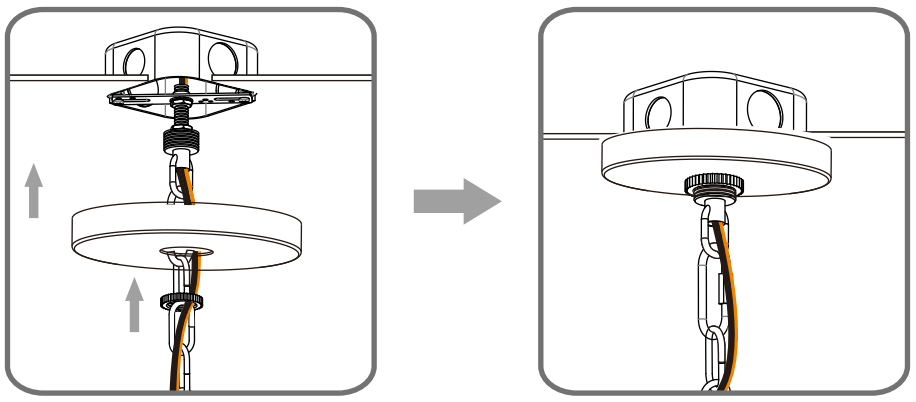
Step 1
Feed the fixture wires
through the loop



2



STEP 5



STEP 6

