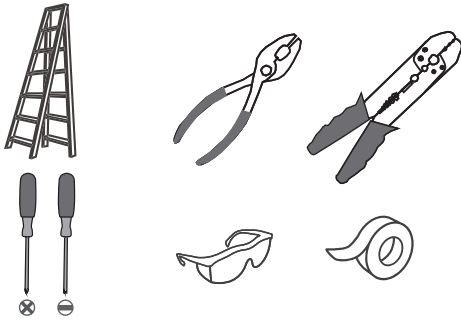
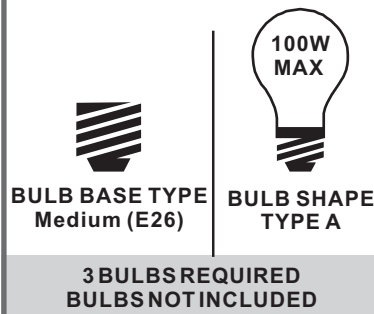


Tools Required



Light Source



Warnings and Cautions

Turn off the electricity at the circuit breaker before installation. Consult a licensed electrician if in doubt about installation.

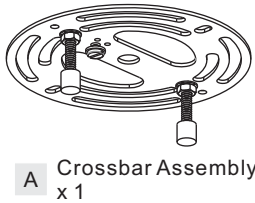
Turn off power to the fixture and allow the bulbs to cool before replacing.

Package Contents

Preparation: Identify and inspect all parts before beginning the installation.

Missing or damaged parts? Contact your original place of purchase.

PARTS BAG



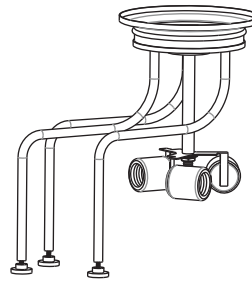
A Crossbar Assembly x 1



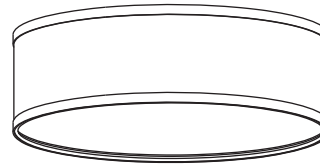
B Outlet Box Screw x 2



C Wire Connector x 3



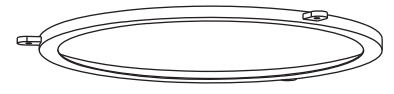
D Fixture Body x 1



E Shade x 1



F Diffuser x 1

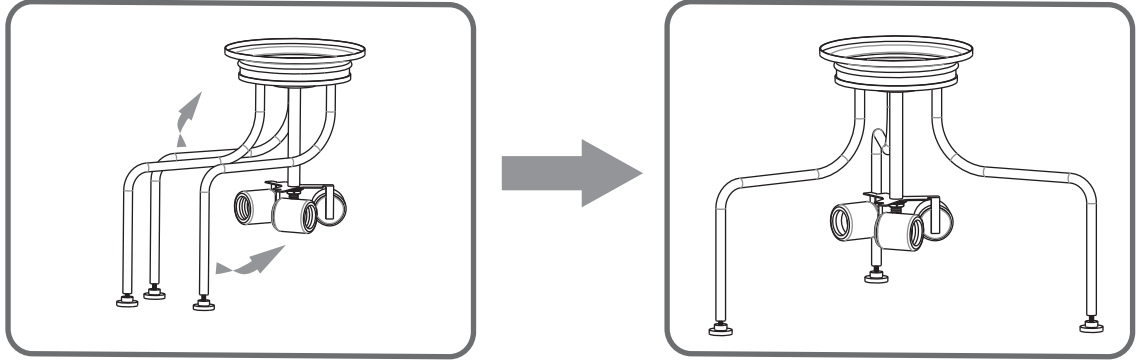


G Shade Holder x 1

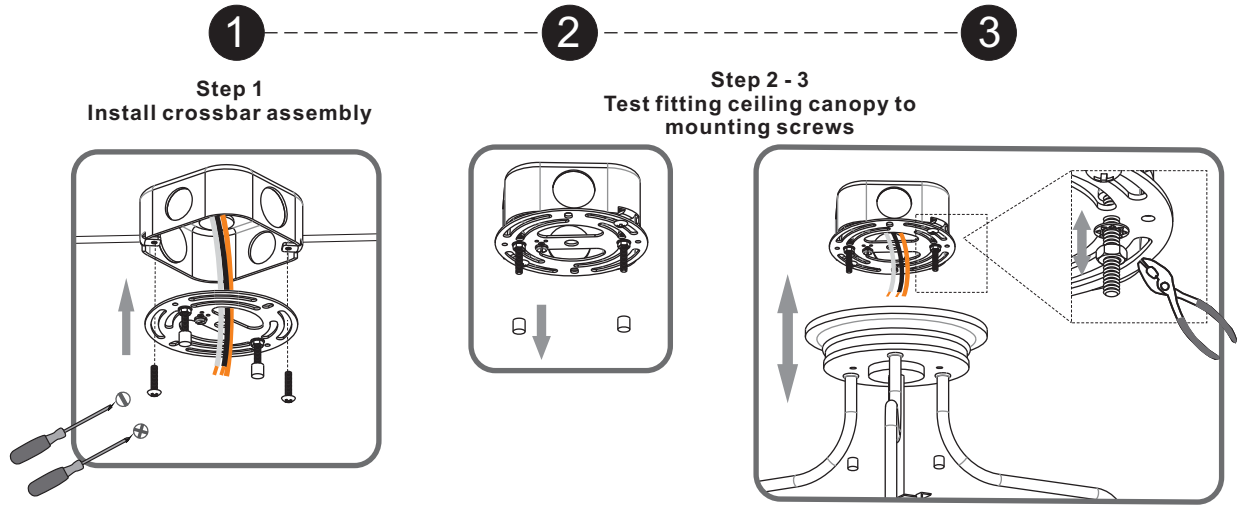
Table of Contents

Unfold Arms	Crossbar Assembly	Shade, Diffuser, Shade Holder	Wiring	Fixture Body	Bulb
STEP 1	STEP 2	STEP 3	STEP 4	STEP 5	STEP 6

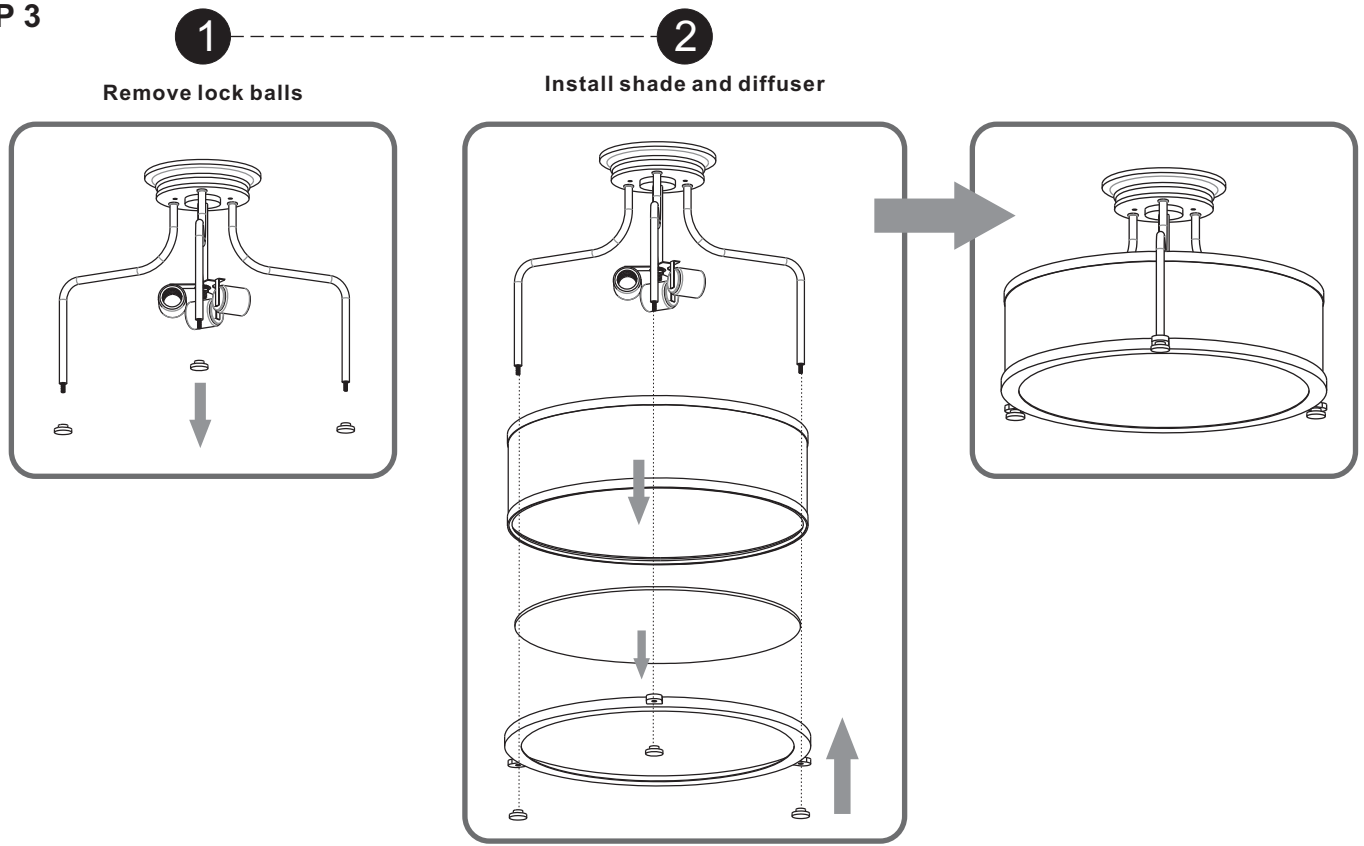
STEP 1



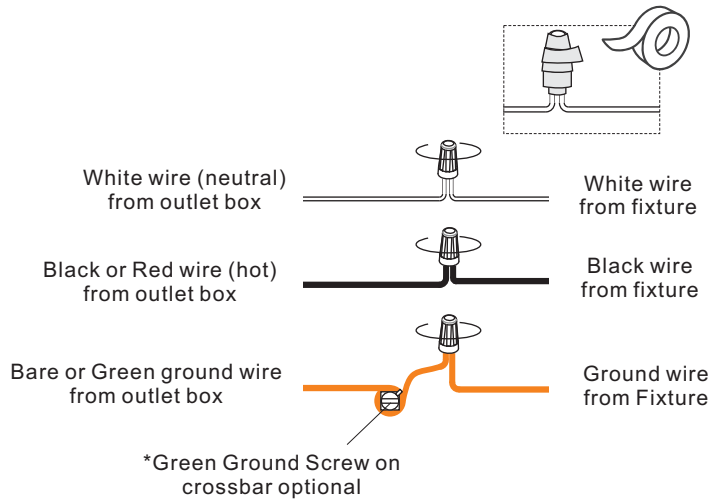
STEP 2



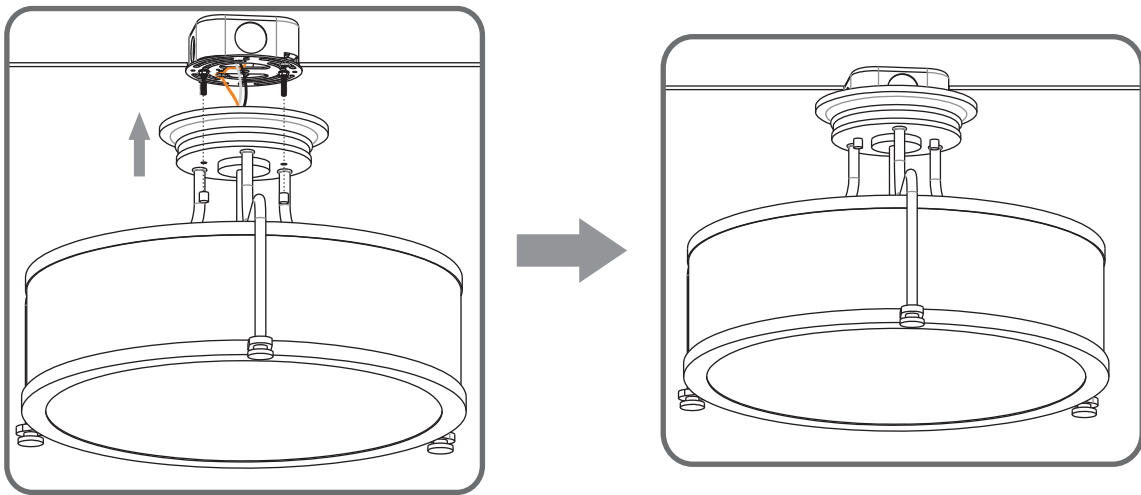
STEP 3



STEP 4



STEP 5



STEP 6

