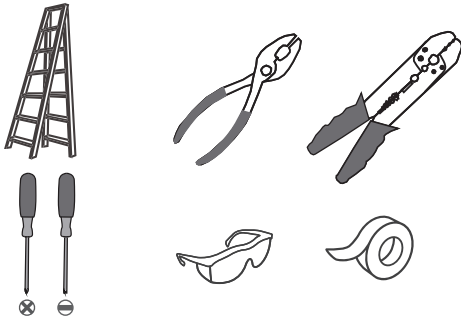
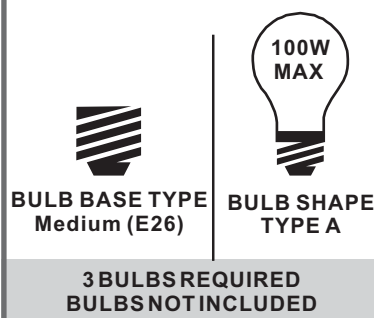


### Tools Required



### Light Source



### Warnings and Cautions

Turn off the electricity at the circuit breaker before installation. Consult a licensed electrician if in doubt about installation.

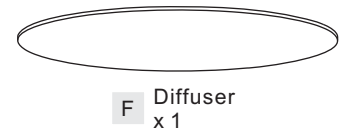
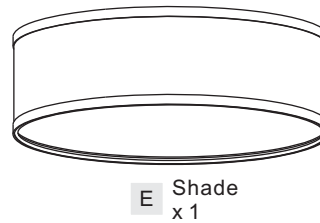
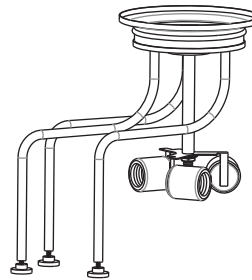
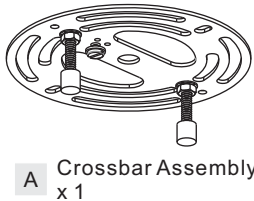
Turn off power to the fixture and allow the bulbs to cool before replacing.

### Package Contents

**Preparation:** Identify and inspect all parts before beginning the installation.

Missing or damaged parts? Contact your original place of purchase.

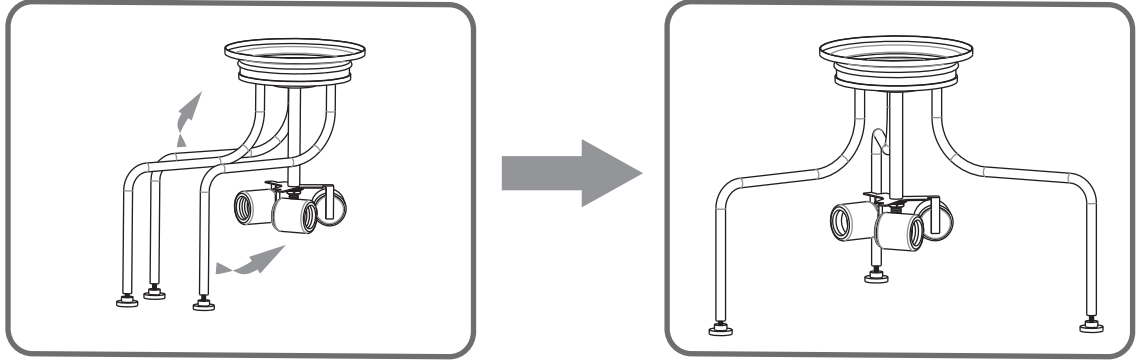
#### PARTS BAG



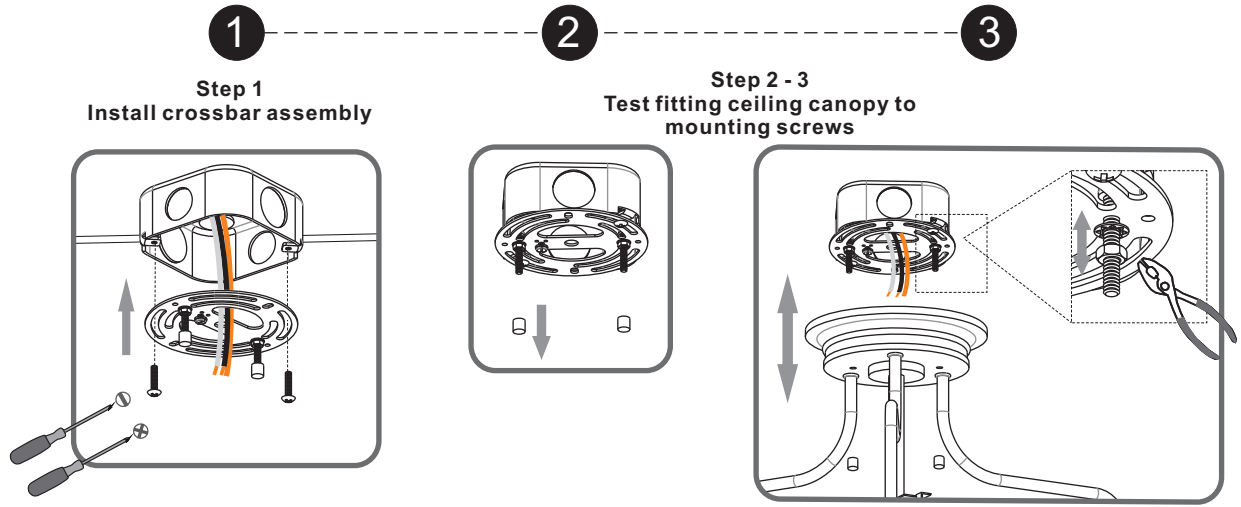
### Table of Contents

| Unfold Arms   | Crossbar Assembly | Shade, Diffuser, Shade Holder | Wiring        | Fixture Body  | Bulb          |
|---------------|-------------------|-------------------------------|---------------|---------------|---------------|
|               |                   |                               |               |               |               |
| <b>STEP 1</b> | <b>STEP 2</b>     | <b>STEP 3</b>                 | <b>STEP 4</b> | <b>STEP 5</b> | <b>STEP 6</b> |

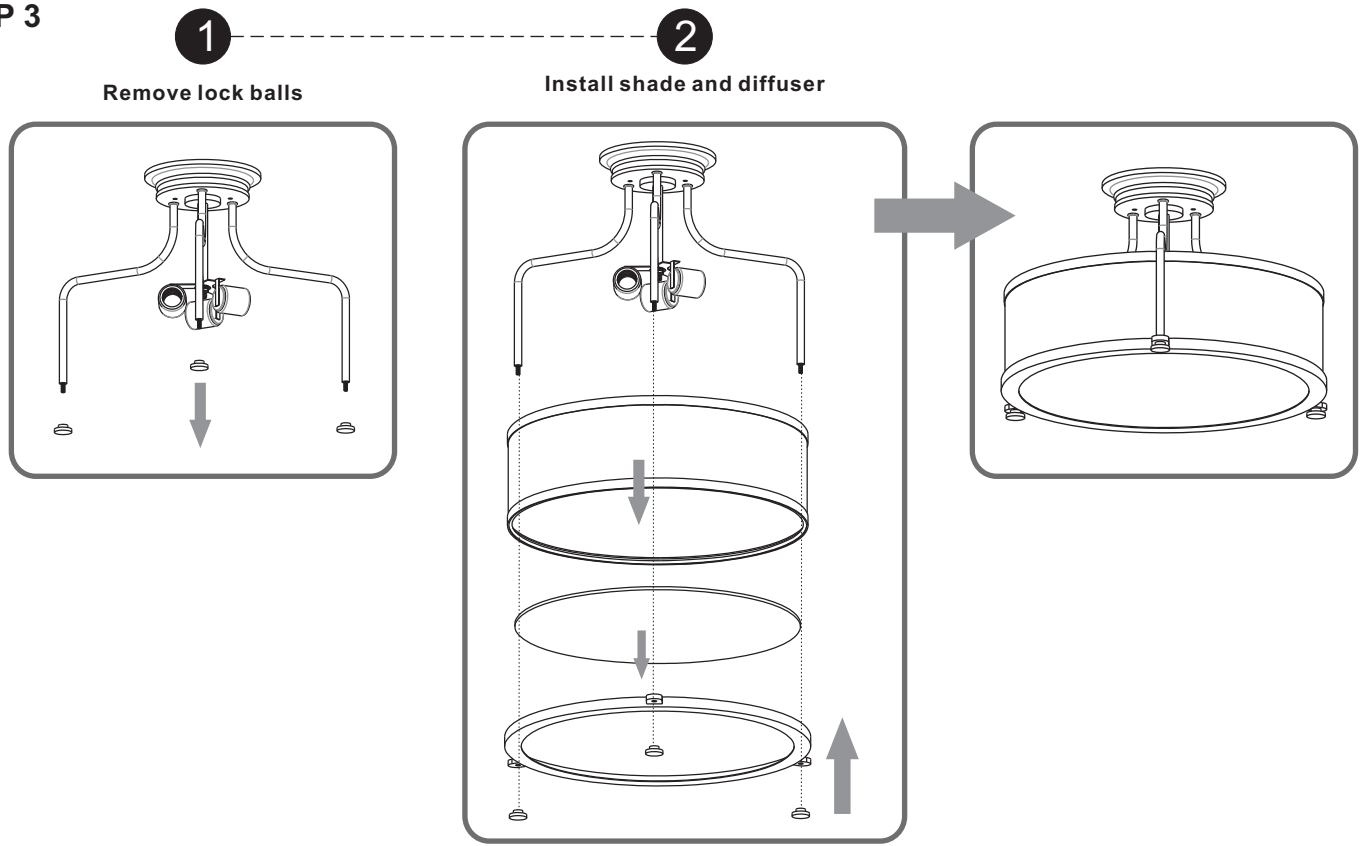
**STEP 1**



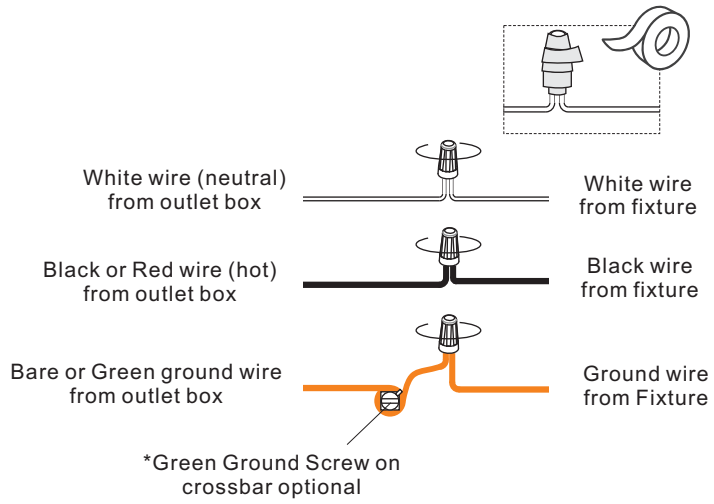
**STEP 2**



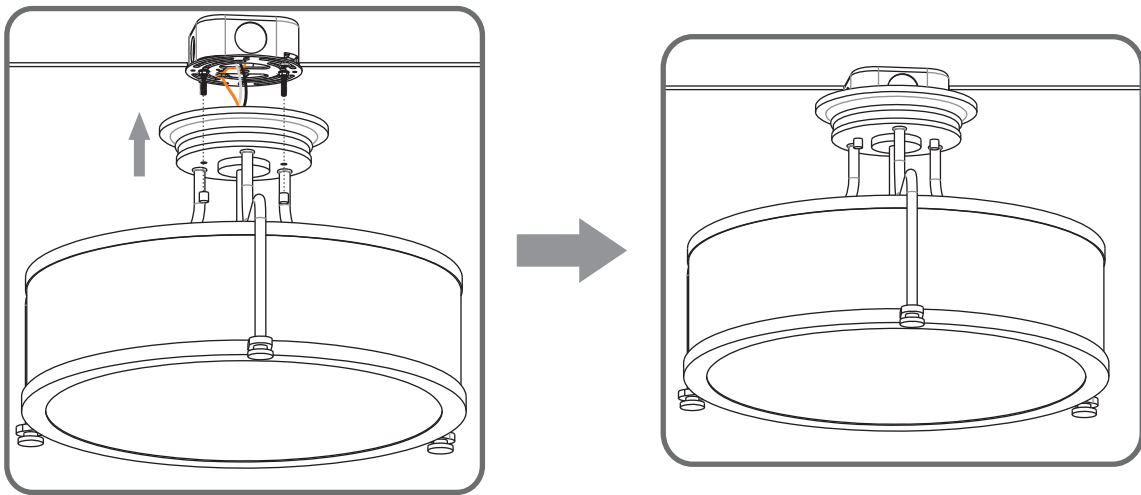
**STEP 3**



## STEP 4



## STEP 5



## STEP 6

