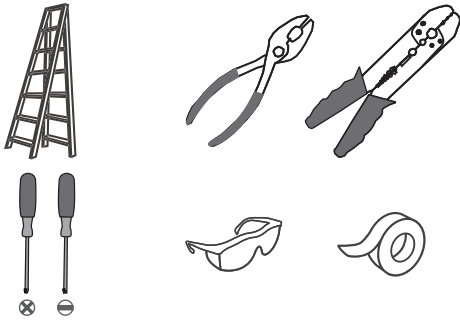
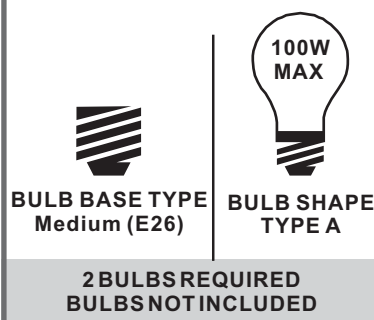


### Tools Required



### Light Source



### Warnings and Cautions

Turn off the electricity at the circuit breaker before installation. Consult a licensed electrician if in doubt about installation.

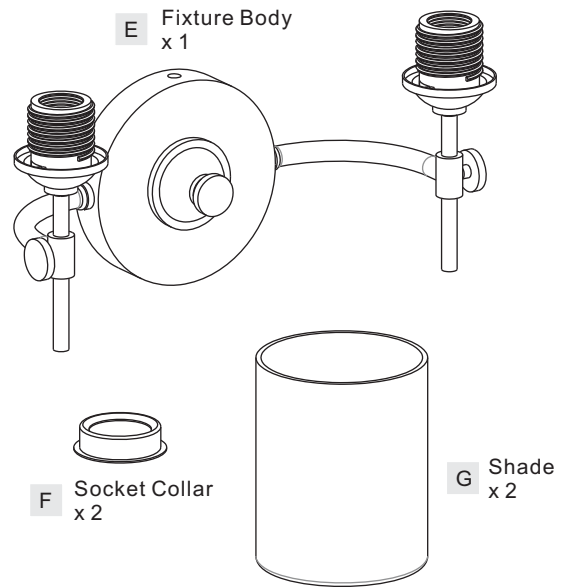
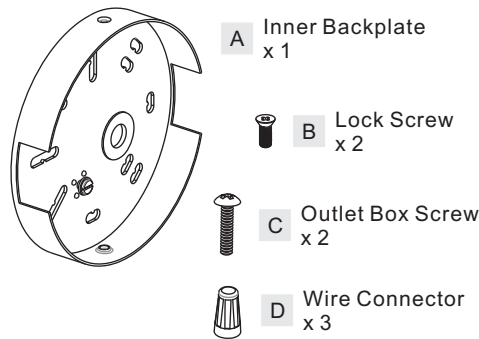
Turn off power to the fixture and allow the bulbs to cool before replacing.

### Package Contents

**Preparation:** Identify and inspect all parts before beginning the installation.

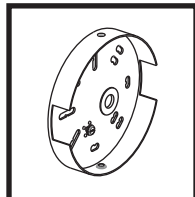
Missing or damaged parts? Contact your original place of purchase.

#### PARTS BAG



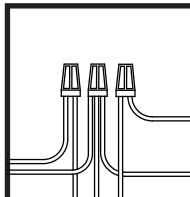
### Table of Contents

#### Inner Backplate



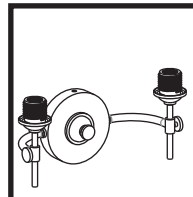
STEP 1

#### Wiring



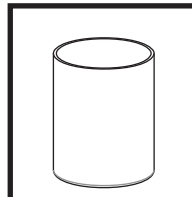
STEP 2

#### Fixture Body



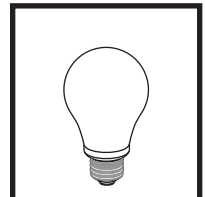
STEP 3

#### Shade



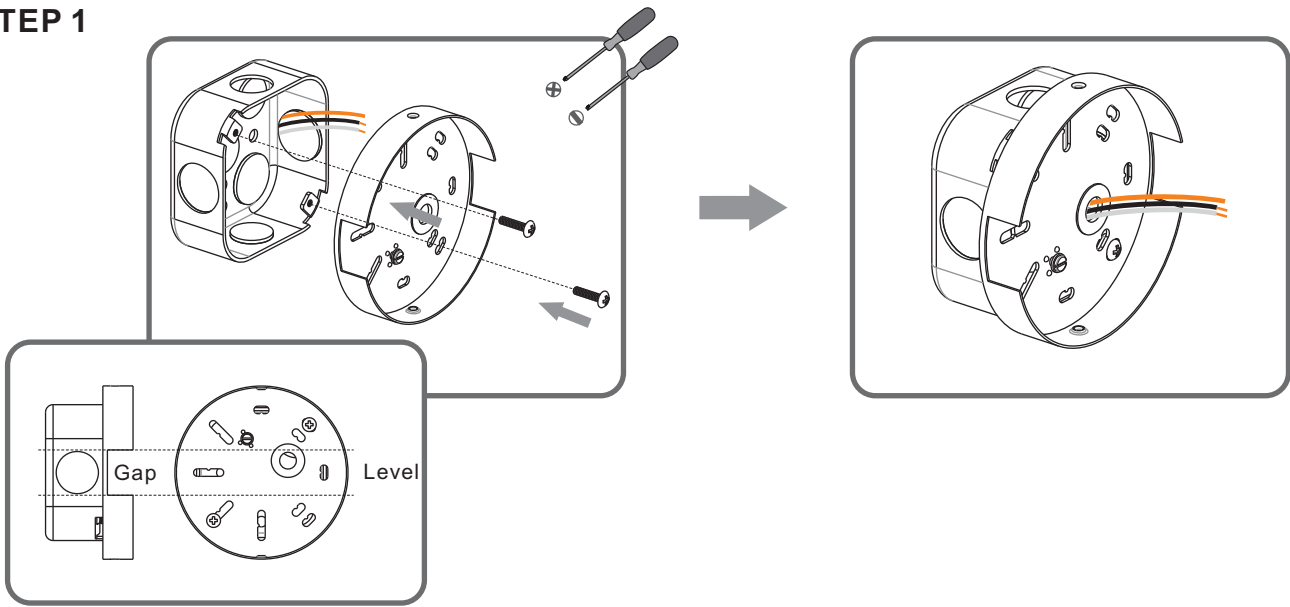
STEP 4

#### Bulb

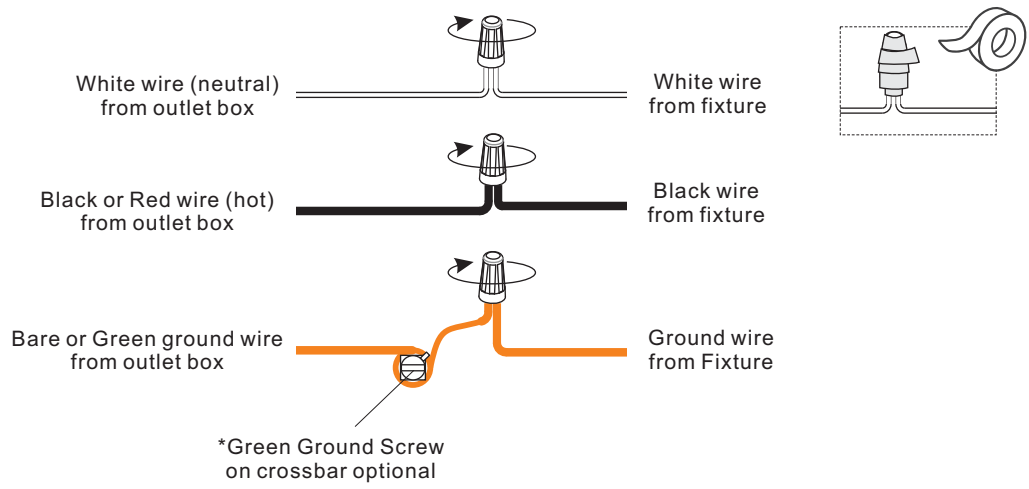


STEP 5

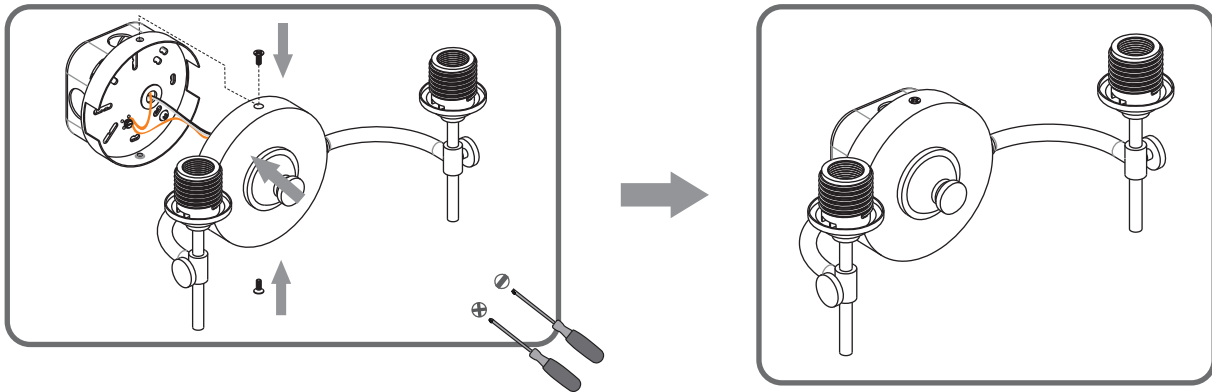
**STEP 1**



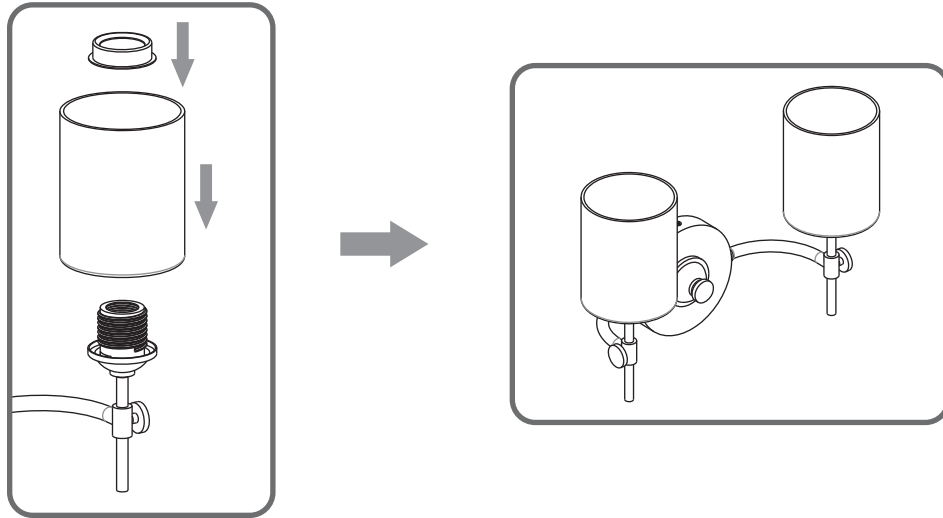
**STEP 2**



**STEP 3**



**STEP 4**



**STEP 5**

