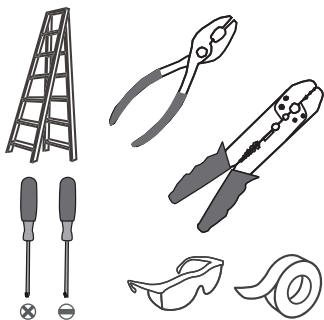
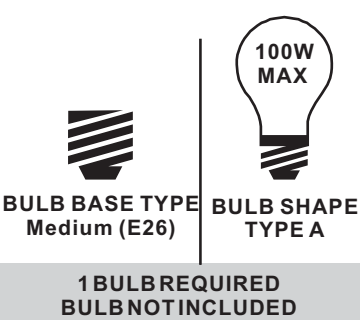


Tools Required



Light Source



⚠ Warnings and Cautions

Turn off the electricity at the circuit breaker before installation. Consult a licensed electrician if in doubt about installation.

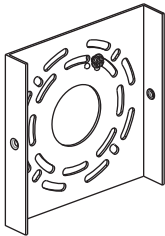
Turn off power to the fixture and allow the bulbs to cool before replacing.

Package Contents

Preparation: Identify and inspect all parts before beginning the installation.

Missing or damaged parts? Contact your original place of purchase.

PARTS BAG

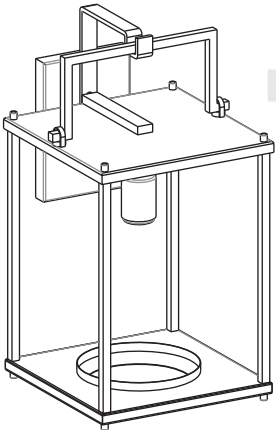


A Inner Backplate
x 1

B Lock Screw
x 2

C Outlet Box Screw
x 2

D Wire Connector
x 3



E Fixture Body
x 1



F Glass
x 1

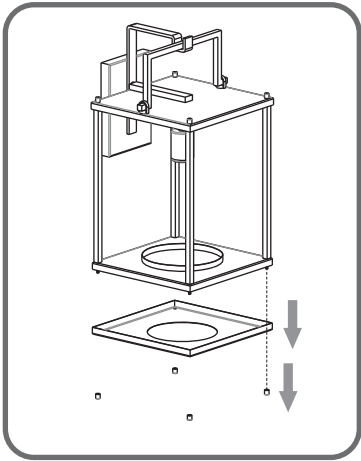
Table of Contents

Bulb & Glass	Inner Backplate	Wiring	Fixture Body	Caulk
STEP 1	STEP 2	STEP 3	STEP 4	STEP 5

STEP 1

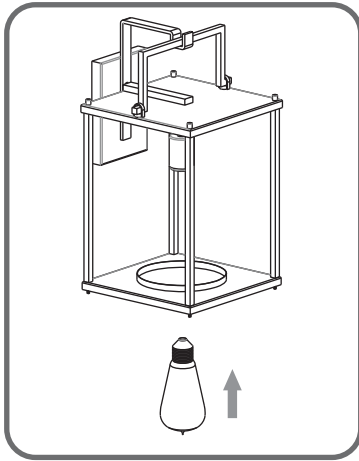
1

Remove Glass Holder



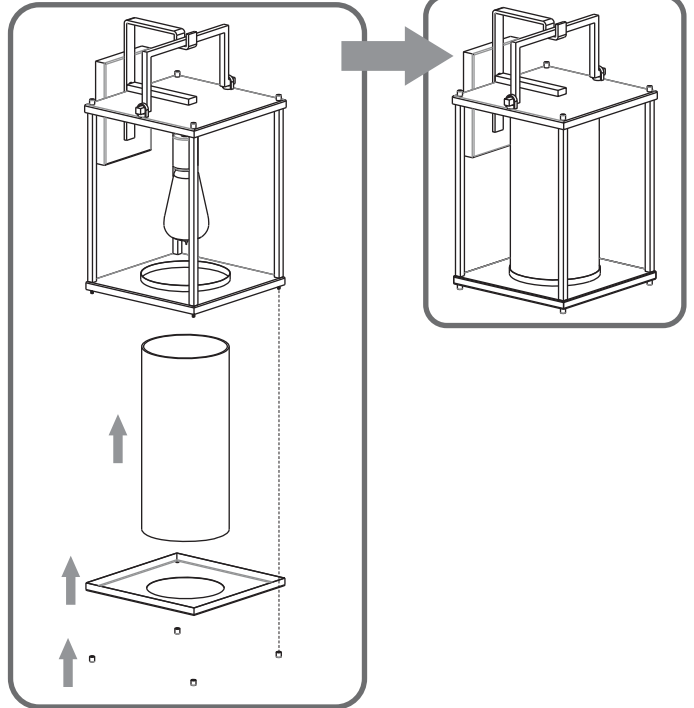
2

Install Bulb

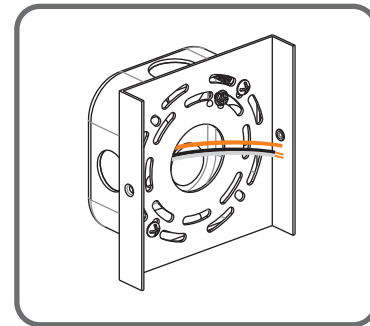
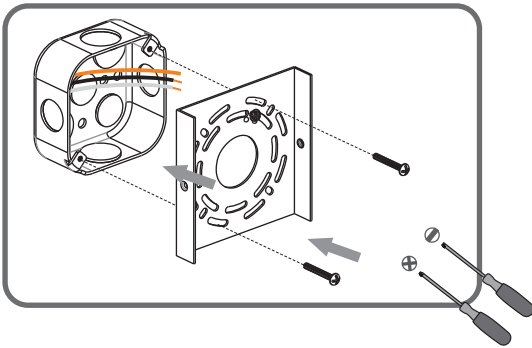


3

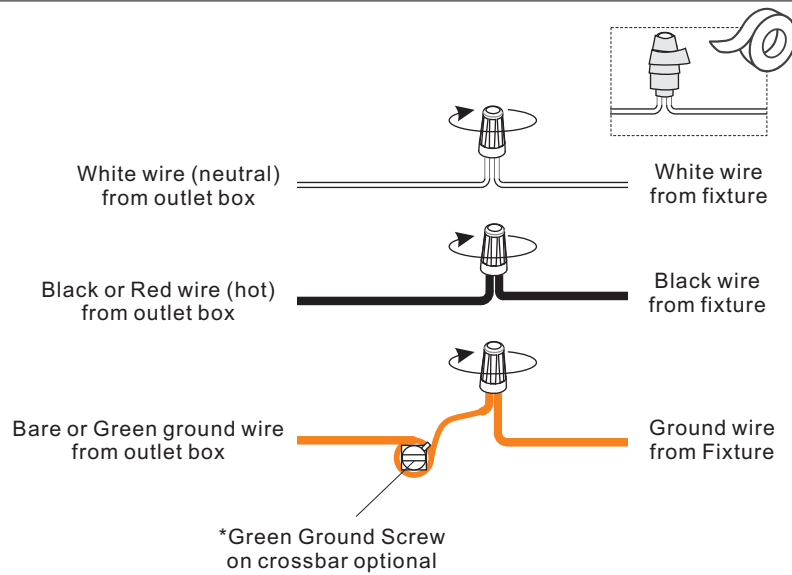
Install Glass and Glass Holder



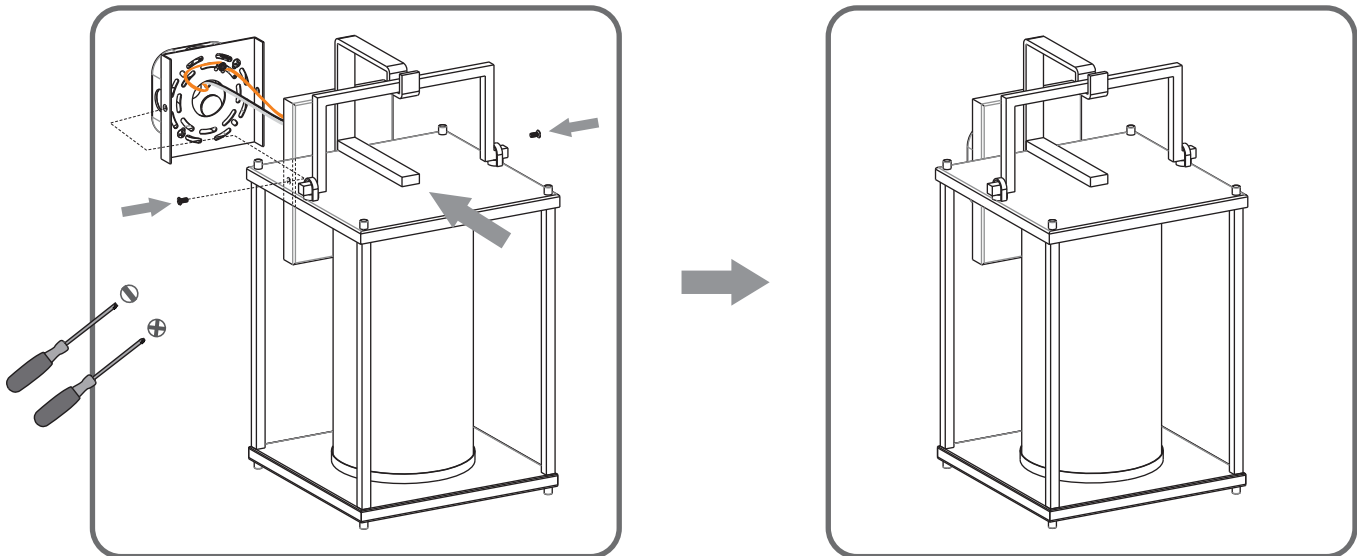
STEP 2



STEP 3



STEP 4



STEP 5

