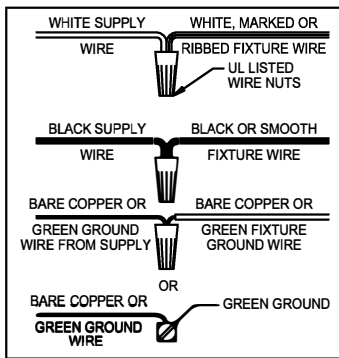


**WARNING** - If any Special Control Devices are used with this Fixture, Follow the Instructions Carefully to assure full compliance with N.E.C. requirements. If there are any questions, contact a Qualified Electrical Contractor.  
**WARNING** - This product contains chemicals known to the State of California to cause cancer, birth defects and /or other reproductive harm. Thoroughly wash hands after installing, handling, cleaning, or otherwise touching this product.  
**CAUTION** - All glass is fragile, use care when handling Glass component(s) and or Lamp(s).

**ASSEMBLY STEPS:**  
**MODE D'ASSEMBLAGE:**  
**PASOS PARA ENSAMBLAR:**

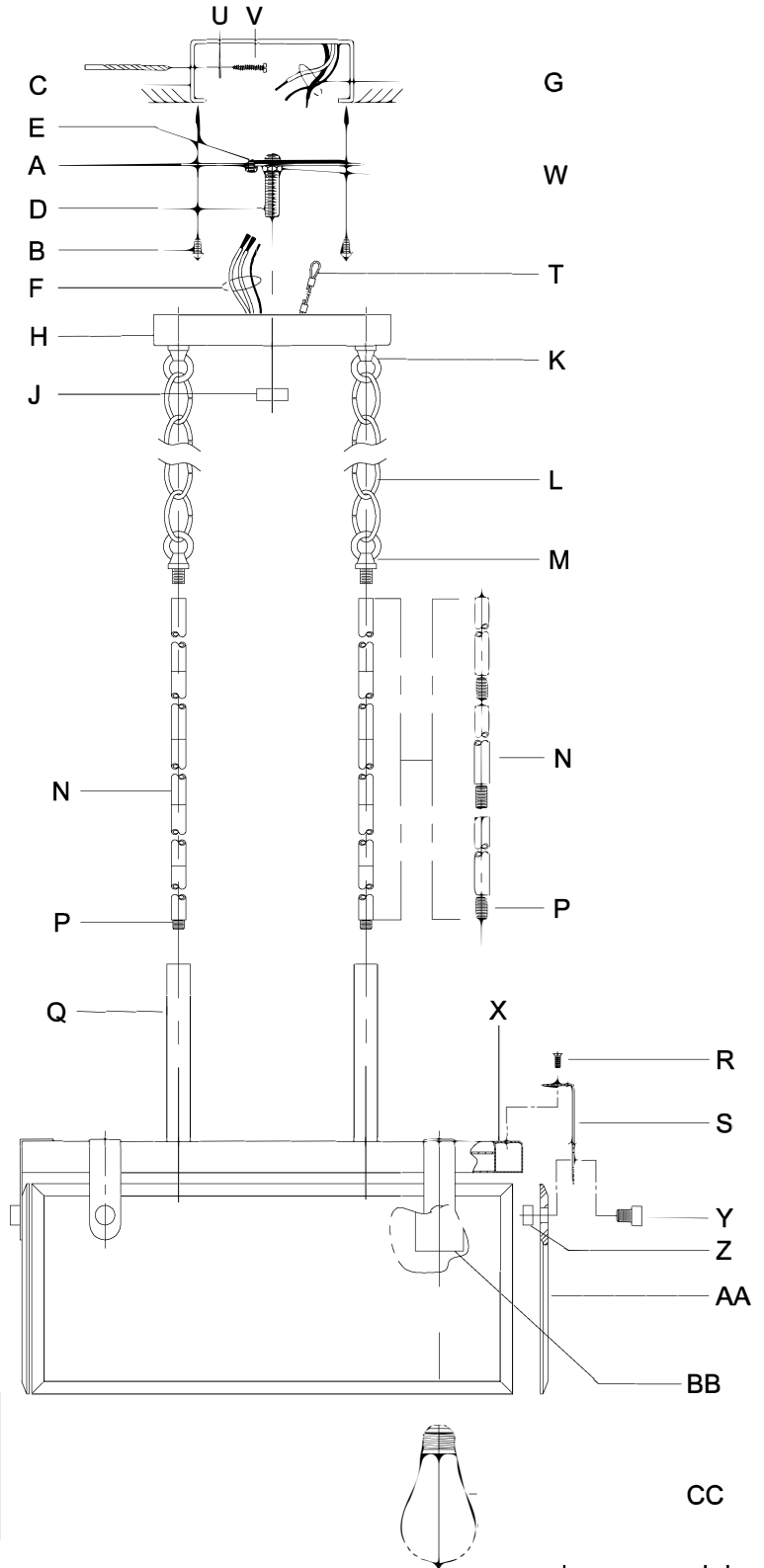
1. #29 (Ø.136) (3.5mm) → C
2. V,U,T → C
3. D,E → A
4. W → D
5. B,A → C
6. F → P,N,M
7. P → Q
8. M → N
9. L → M,K
10. F → L,K,H
11. F → G
12. J,H → D
13. R,S → X
14. Y,S,AA → Z
15. CC → BB



ADJUST HEIGHT WITH "D" SCREW  
 W → A (TO LOCK)  
 RÉGLEZ LA HAUTEUR AVEC "D"  
 W → A (À VERROUILLER)  
 AJUSTA LA ALTURA CON "D"  
 W → A (APRETAR)

Attach (N), (P) to achieve overall desired length.  
 Joignez (N), (P) pour obtenir la longueur voulue.  
 UNA (N), (P) PARA LOGRAR LA LONGITUD DESEADA.

B, C, G & CC  
 (NOT FURNISHED)  
 (NON FOURNIE)  
 (NO INCLUIDA)



**WARNING** - If any Special Control Devices are used with this Fixture, Follow the Instructions Carefully to assure full compliance with N.E.C. requirements. If there are any questions, contact a Qualified Electrical Contractor.

**WARNING** - This product contains chemicals known to the State of California to cause cancer, birth defects and /or other reproductive harm. Thoroughly wash hands after installing, handling, cleaning, or otherwise touching this product.

**CAUTION** - All glass is fragile, use care when handling Glass component(s) and or Lamp(s).

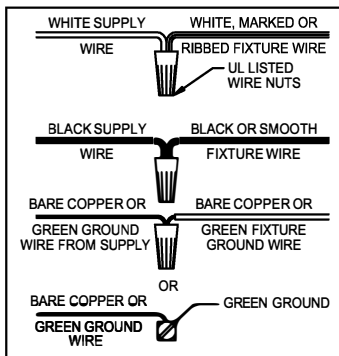
\*\*\*\*\*

**ASSEMBLY STEPS:**

**MODE D'ASSEMBLAGE:**

**PASOS PARA ENSAMBLAR:**

1. D,E → A
2. B,A → C
3. W → D
4. F → G
5. J,H → D
6. R,S → X
7. Y,S,AA → Z
8. CC → BB



ADJUST HEIGHT WITH "D" SCREW  
 W → A (TO LOCK)  
 RÉGLEZ LA HAUTEUR AVEC "D"  
 W → A (À VERROUILLER)  
 AJUSTA LA ALTURA CON "D"  
 W → A (APRETAR)

**B, C, G & CC  
 (NOT FURNISHED)  
 (NON FOURNIE)  
 (NO INCLUIDA)**

