

Copper Cabling Solutions

Category 6A Tool-less Keystone Module



Tool-less Keystone Module

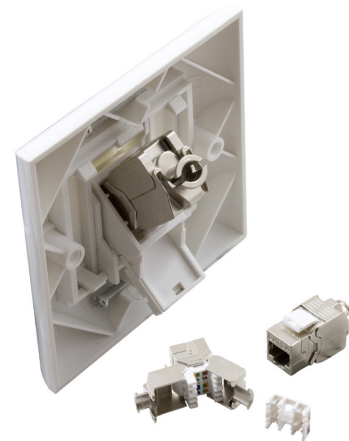
Connectix Tool-less Keystone Modules ensure a quick and easy to terminate installation. The snap-fit to terminate design means that a punch down tool is not required.

They have been designed to be installed into most UK and European Keystone applications, including standard or angled faceplate products, patch panels or surface boxes.

The loading cap is colour coded to T568A and T568B standards to ensure a quick and easy installation. The module offers a high-performance transmission that meets or exceeds Category 6 standards.

Features & Benefits

- Quick and easy to install
- Snap-fit to terminate
- Suitable for all standard Keystone applications
- Compact design
- Category 6 hardware performance
- T568A and T568B colour coded wiring terminals
- 25 Year System Warranty Available



Product Specifications	
Width	16.3 mm
Depth	38 mm
Height	21 mm
Mounting Hole Size	19.3 mm x 14.7 mm
Recommended back box depth	32mm
Copper conductor diameter	24 AWG
Life (operations)	Min. 750
Shielding housing	Zinc die-cast
Colour code	T568B
Material	Polycarbonate/ABS thermoplastic resin with grade UL94 VO at 1.5 mm flame retardancy
Colours available	White/Black
IDC Labels	Colour coded to T568A and T568B
IDC Blocks	Tool-less IDC mechanism
Conforms to	ISO/IEC 11801;EN 50173-1, ANSI/TIA 568-C Category 6A, IEEE802.3an 10-Gigabit Ethernet

Ordering Information	
Product Description	Part Number
Cat 6A Tool-less Keystone Module	008-010-010-10
RJ45 UTP Keystone Coupler	008-010-010-67
Angled Shuttered Euro Fascia	008-010-010-18
Angled Shuttered LJ6C Adaptor	008-010-010-76