

Copper Cabling Solutions

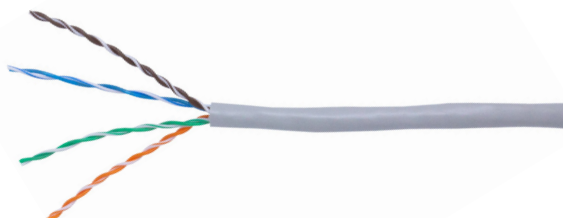
Category 5e Solid UTP PVC Eca Cable



Connectix Cat 5e UTP PVC Cable is designed for high speed LANs including Gigabit Ethernet applications. When used with Connectix panels and modules it gives the exceptional performance required for transmission over all four pairs. The cable is supplied in easy to use boxes and is available with standard grey PVC outer sheaths.

Features & Benefits

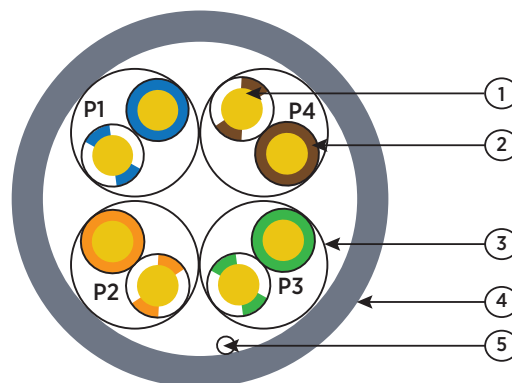
- Suitable for Gigabit Ethernet applications
- PVC outer sheaths
- Supplied metre marked in easy pull boxes for easy installation
- Pure copper cores
- Excellent performance exceeding ANSI/TIA stated specifications
- 25 Year System Warranty Available



Electrical Specifications				
DC Resistance	< 9.4 Ω /100 m			
Insulation Resistance	>5000m Ω *km			
Capacitance Unbalance (pair to ground)	< 5.6nF/100 m			
Characteristic Impedance @1-250 MHz	100 MHz +/- 15 Ω			
Velocity Ratio	69%			
Operating Temperature Range	-20 °C to +70 °C			
Installation Temperature Range	0 °C to +50 °C			
Transfer Impedance (m Ω /m)	1 MHz	10 MHz	30 MHz	100MHz

Product Specifications	
Inner Conductor	24 AWG plain copper
Insulation	High density polyethylene
Construction	4 twisted pairs cabled together
Colour Code	Pair 1: White/Blue-Blue/White Pair 2: White/Orange-Orange/White Pair 3: White/Green-Green/White Pair 4: White/Brown-Brown/White
Sheath	PVC
RAL Colour	Grey - 7044
Overall Diameter	5.0 +/- 0.2 mm
Min. Bending Radius	20 mm
Impedance	31
Conforms to	ANSI/TIA-568-C, ISO 11801 CENELEC EN 50173
Euroclass Rating	Eca

Diagram



- | | |
|---|--------------------|
| 1. Outer Sheath PVC | 4. Rip Cord |
| 2. High Density Polyethylene Insulation | 5. HOPE Insulation |
| 3. Copper Core | |

Ordering Information

Description	Part Number
Cat 5e UTP PVC Solid Cable	001-003-003-62S