



Instructions for
The Train Pattern
for
The Italian Lady's
Gamurra and Cioppa
Patterns

By

Margo Anderson

Assembling the Tiled Patterns

For PC:

1. Download Adobe Reader
2. Open file in Adobe Reader
3. Click the printer button.
4. Click "Properties".
5. Select the "Print on Both Sides" drop down menu.
6. Click "None"
7. Click OK to return to Print window
8. Under "Orientation" click "Auto".
10. Click Print.

For Mac:

1. Download Adobe Reader
2. Open file in Adobe Reader.
3. Click the printer button.
4. Click the "Page Handling and Sizing" button.
5. Click "Actual Size".
6. Under "Orientation" click "Auto".
6. At the bottom of the printer window, click "Printer"
7. Uncheck "Two Sided"
8. Click Print.

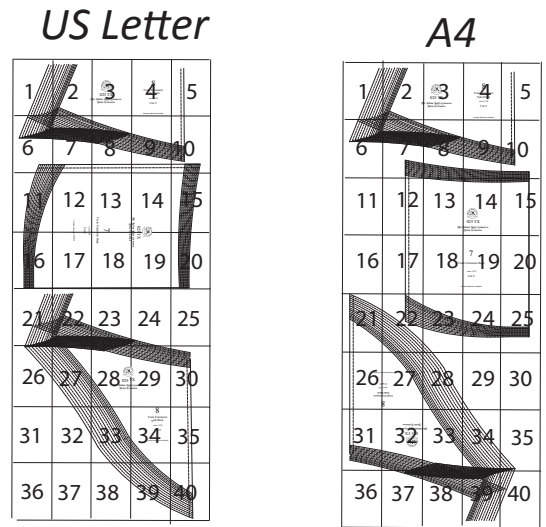
The sheets will print with a ruler at the top of each one. Check this measurement to be sure you have clicked "actual Size".

Each sheet is numbered for ease of assembly. There are two files, one for US letter size, and one for A4 size.

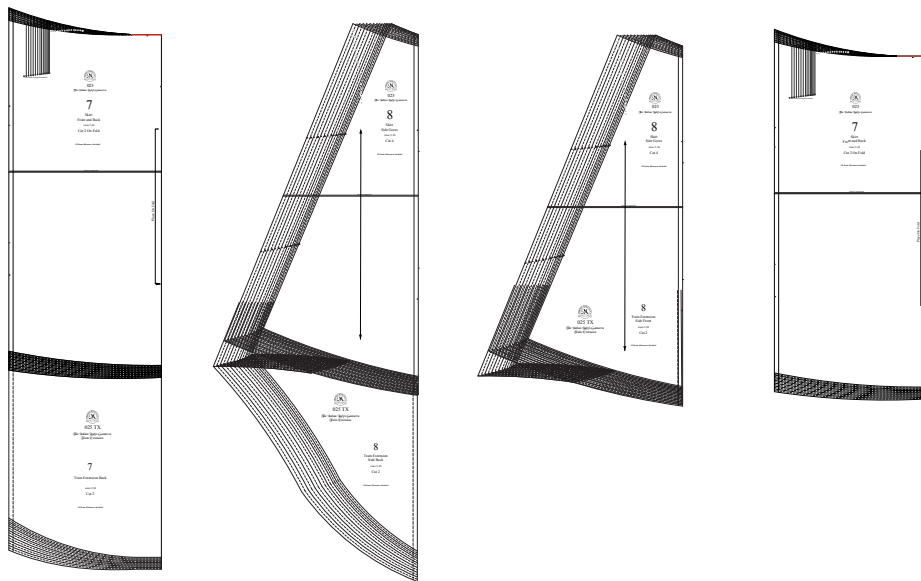
Each files will print 40 sheets.

Align the triangles in the corners and on each side margin to form diamonds. The sheets will print with blank margins. You can either trim the margins off, or overlap them and trace to fill in the gaps in the print lines.

Tape sheets together.



Align the train extension pattern pieces with the skirt pattern pieces by matching the lower edge of the skirt pieces with the upper edges of the train pieces. Tape together.



Yardage

025 Gamurra: 9 Yards

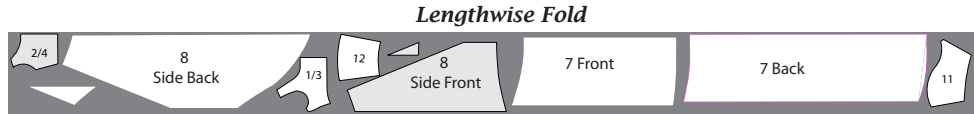
026 Cioppa View A: $9 \frac{5}{8}$ Yards

026 Cioppa View B: $9 \frac{1}{4}$ Yards

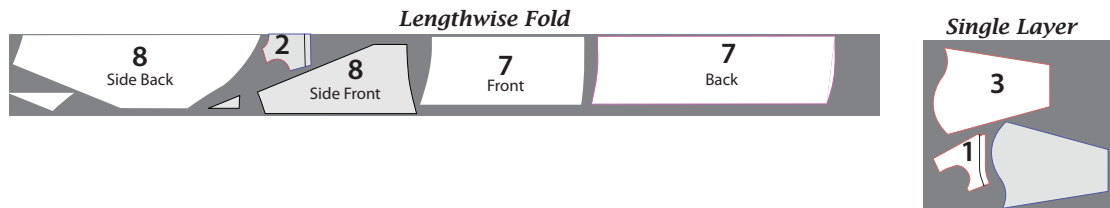
026 Cioppa View C: 8

Layouts

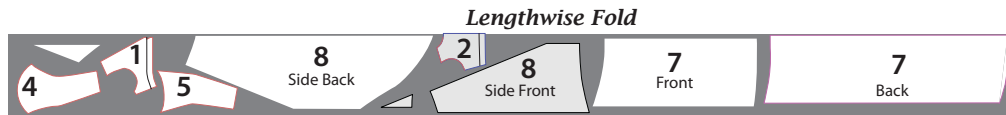
025
Gamurra



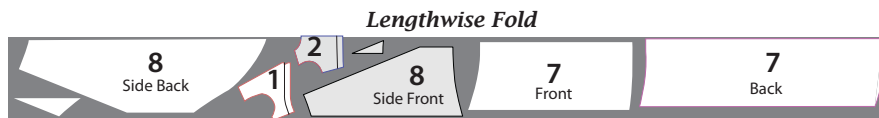
026
Cioppa
View A



026
Cioppa
View B



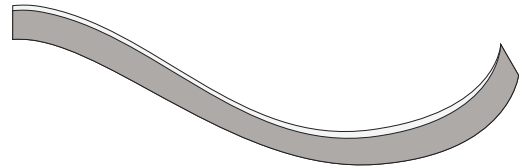
026
Cioppa
View C



Hemming the Trained Skirt

Make at least 6 yards of 4" wide continuous bias. See Techniques Manual for continuous bias instructions.

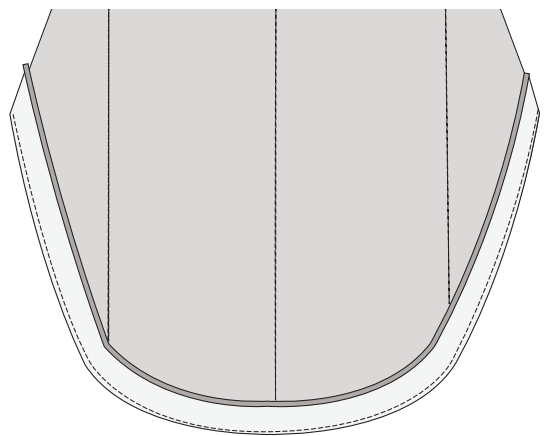
Fold one side of bias 1/4" to wrong side. Press.



Pin unpresed edge of facing to skirt, RIGHT sides together, folding starting end under 1/2".

At outside curves, stretch lower edge of facing as you pin, as much as you can without causing skirt edge to pucker.

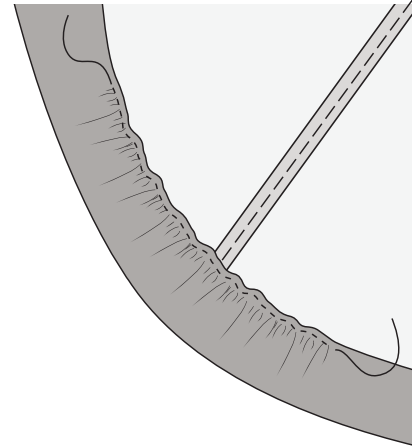
Stitch. Grade seams, notching and clipping as needed at curves.



Pin facing upper edge to wrong side of skirt, allowing 1/4" of facing to show on right side.

Stretch and shrink upper edge until it lies flat as possible.

If you cannot remove all the fullness by shrinking, hand stitch with a small running stitch along upper fold of curved portion. Pull up gathers to fit. Pin in place and press as flat as possible.



Hand stitch hem. OR machine stitch and cover stitching line with decorative trim.