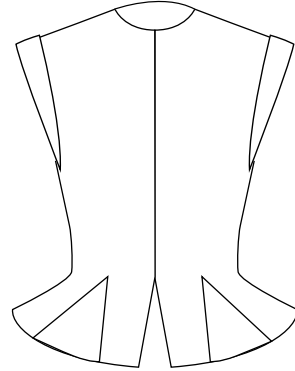


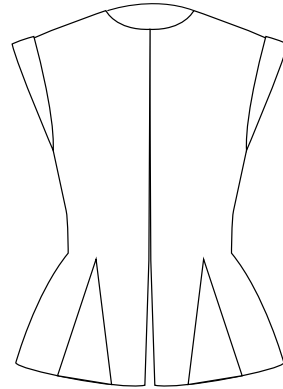
The Elizabethan Waistcoat Layouts

There are two styles of torsos, each in two length options, and two sleeve styles. These styles are interchangeable, which can make things confusing, so pay close attention when cutting.

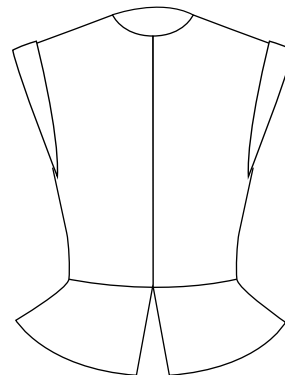
Style A uses godets to flare the lower portion of the garment, which reaches the high hip.



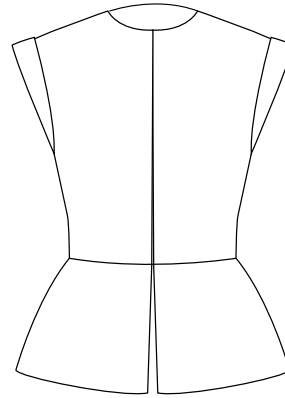
Style B is the longer version of Style A. The lower edge is approximately 9" below the waist.



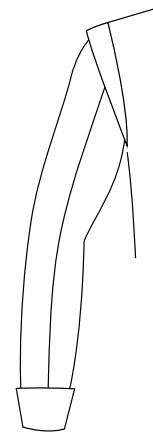
Style C has a peplum cut separately, which reaches the high hip.



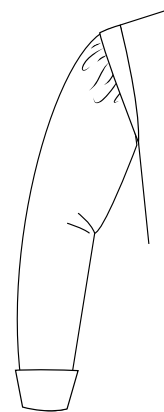
Style D is the longer version of Style C. The lower edge is approximately 9" below the waist.



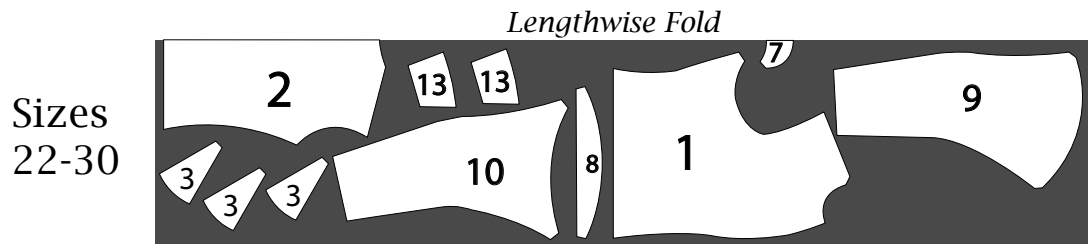
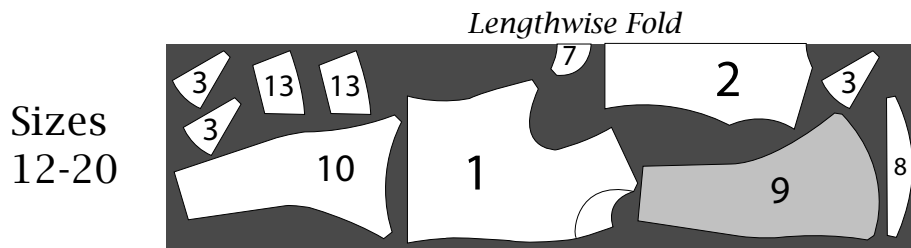
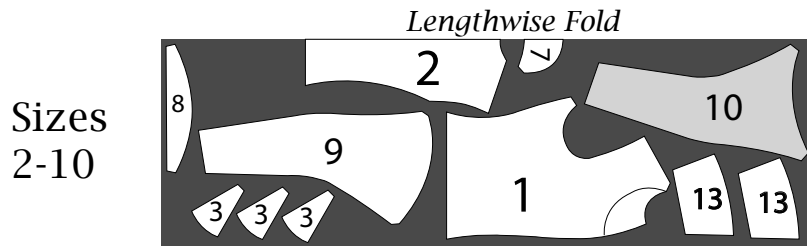
Sleeve 1 is a closely fitted two part sleeve.



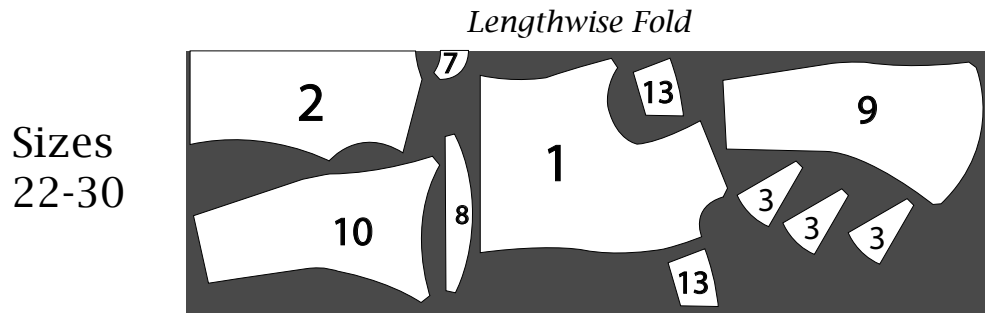
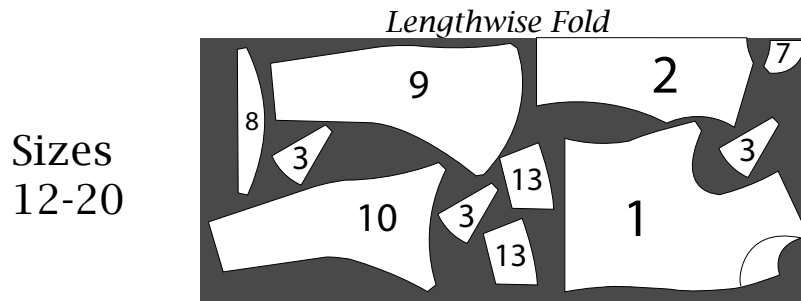
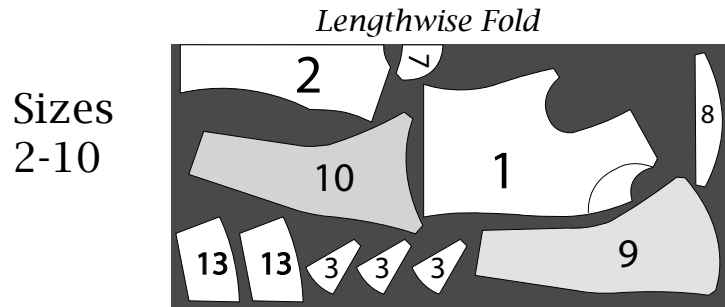
Sleeve 2 is a one part sleeve with fullness at the cap.



View A
Sleeve 1
45"



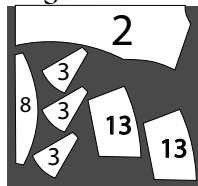
View A
Sleeve 1
54-60"



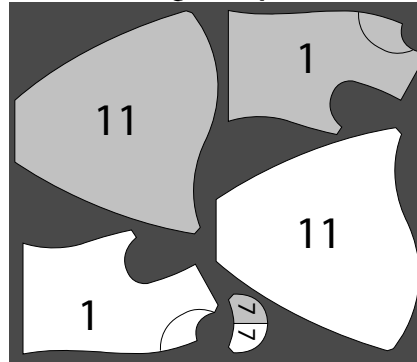
View A
Sleeve 2
45"

Sizes
 2-10

Lengthwise Fold

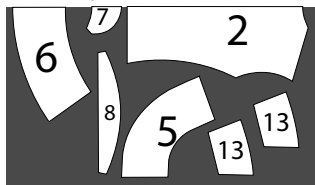


Single Layer

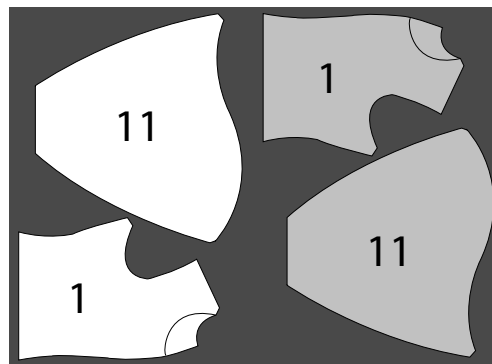


Sizes
 12-20

Lengthwise Fold

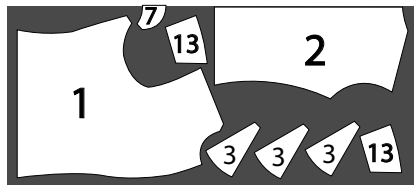


Single Layer

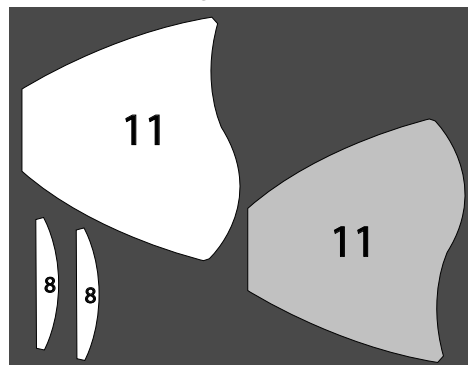


Sizes
 22-30

Lengthwise Fold



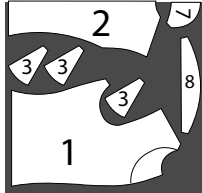
Single Layer



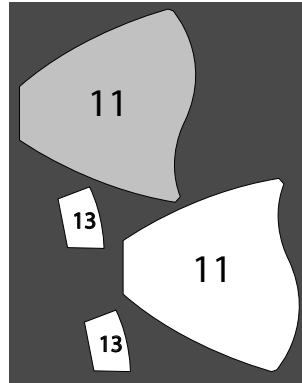
**View A
Sleeve 2
54-60"**

Sizes
2-10

Lengthwise Fold

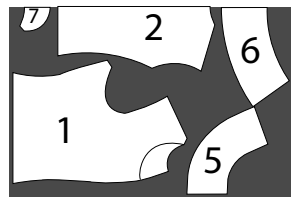


Single Layer

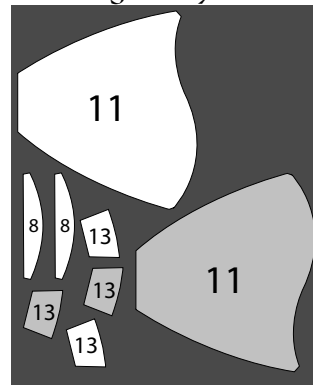


Sizes
12-20

Lengthwise Fold

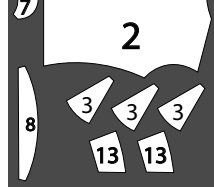


Single Layer

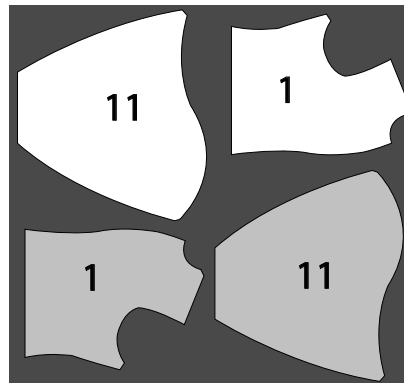


Sizes
22-30

Lengthwise Fold



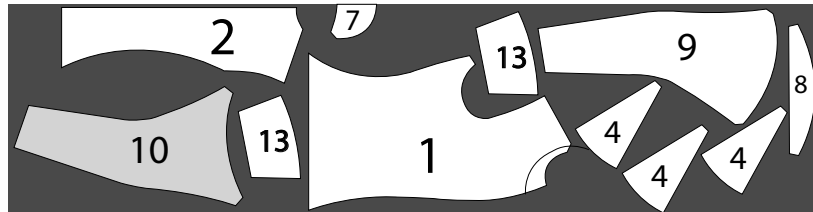
Single Layer



View B
Sleeve 1
45"

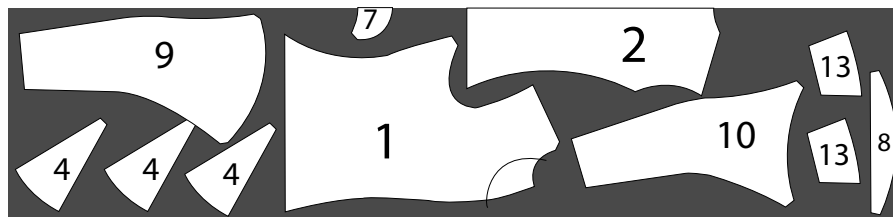
Lengthwise Fold

Sizes
2-10



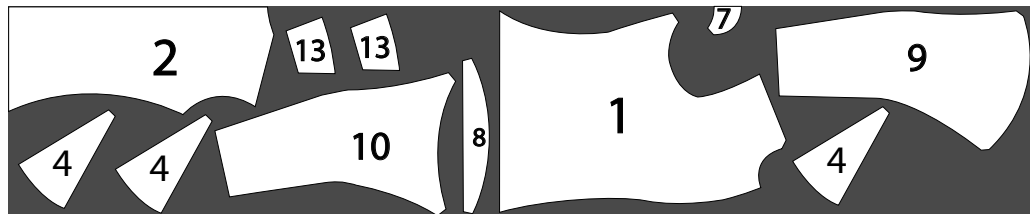
Lengthwise Fold

Sizes
12-20



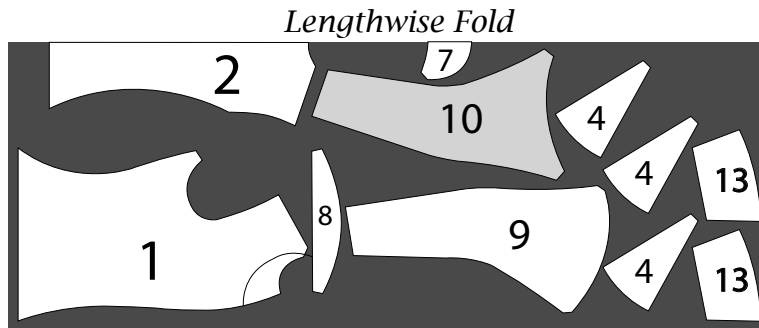
Lengthwise Fold

Sizes
22-30

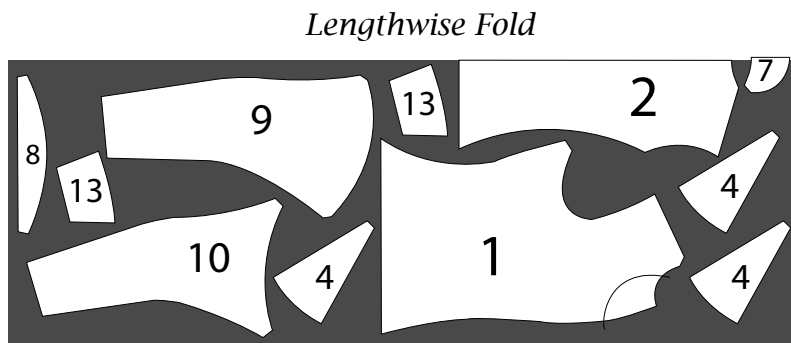


View B
Sleeve 1
54-60"

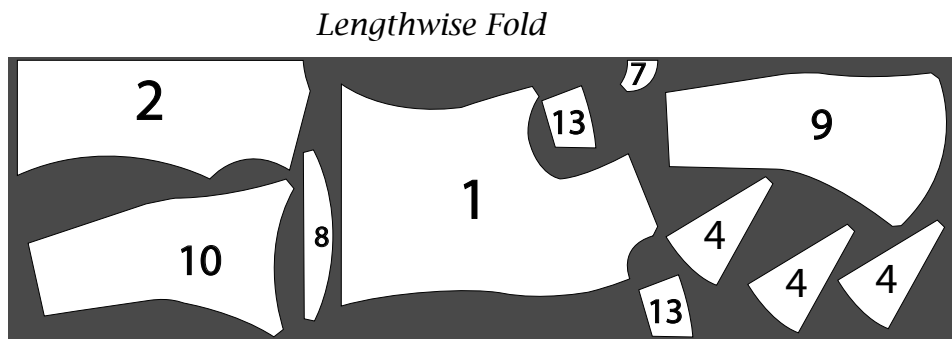
Sizes
2-10



Sizes
12-20



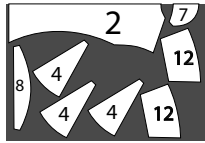
Sizes
22-30



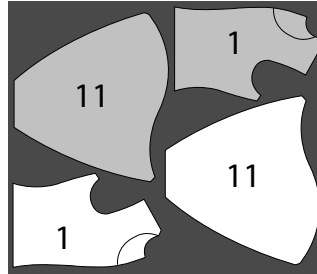
View B
Sleeve 2
45"

Sizes
2-10

Lengthwise Fold

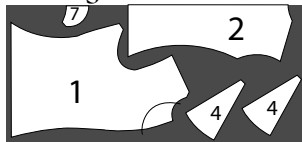


Single Layer

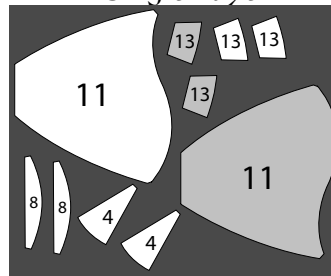


Sizes
12-20

Lengthwise Fold

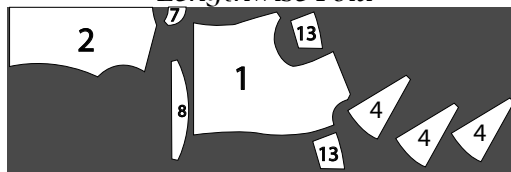


Single Layer

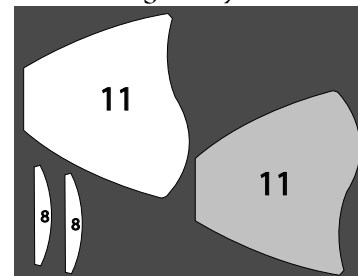


Sizes
22-30

Lengthwise Fold



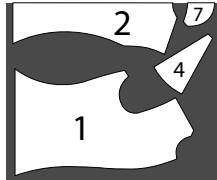
Single Layer



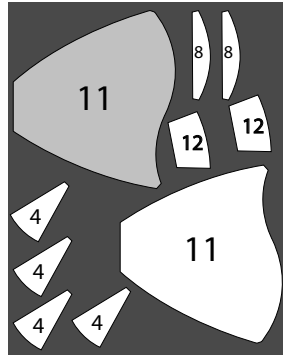
View B
Sleeve 2
54-60"

Sizes
 2-10

Lengthwise Fold

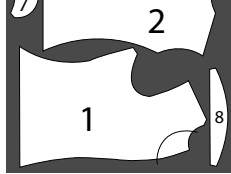


Single Layer

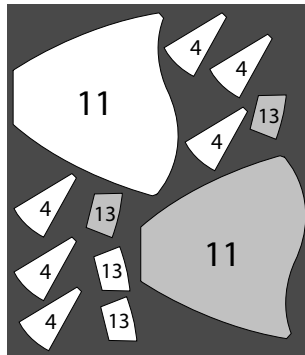


Sizes
 12-20

Lengthwise Fold

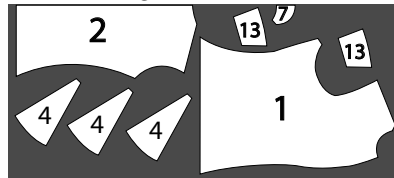


Single Layer

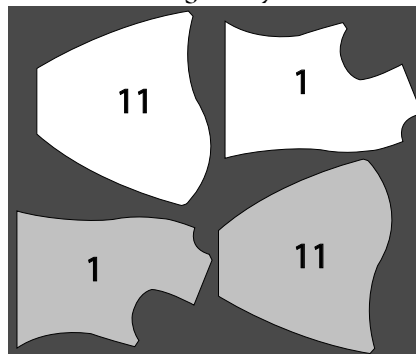


Sizes
 22-30

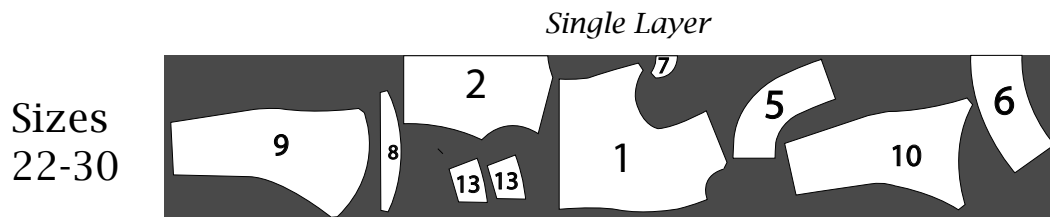
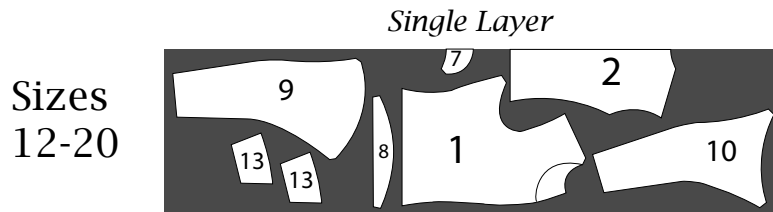
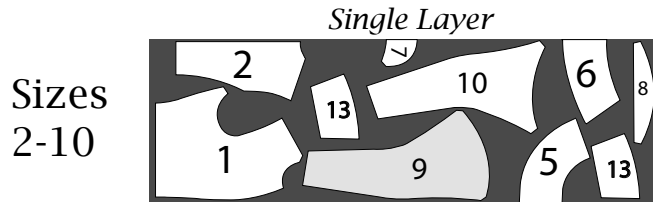
Lengthwise Fold



Single Layer



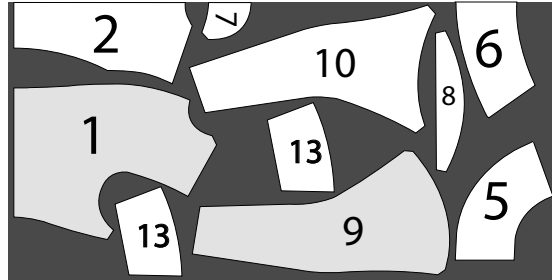
View C
Sleeve 1
45"



View C
Sleeve 1
54-60"

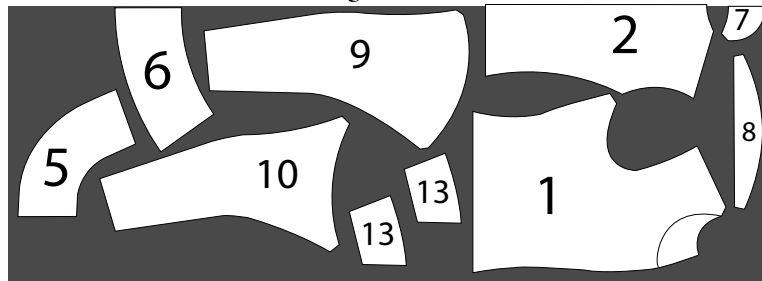
Lengthwise Fold

Sizes
2-10



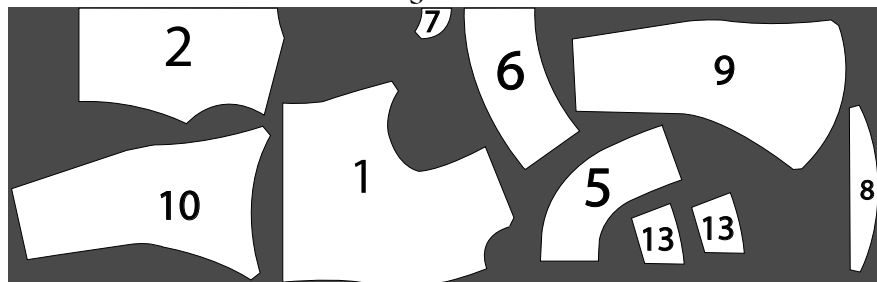
Lengthwise Fold

Sizes
12-20



Lengthwise Fold

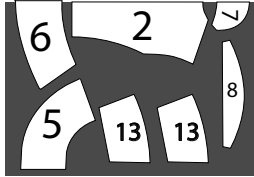
Sizes
22-30



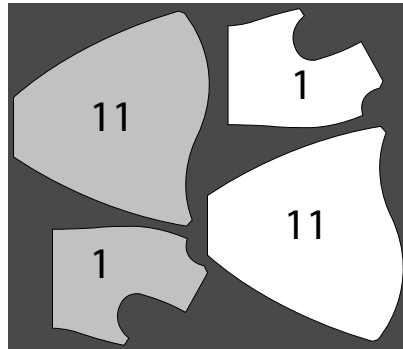
View C
Sleeve 2
45"

Sizes
2-10

Lengthwise Fold

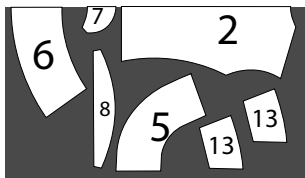


Single Layer

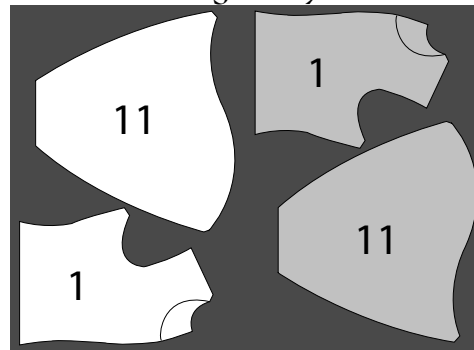


Sizes
12-20

Lengthwise Fold

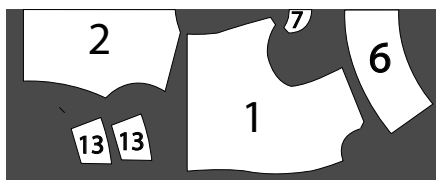


Single Layer

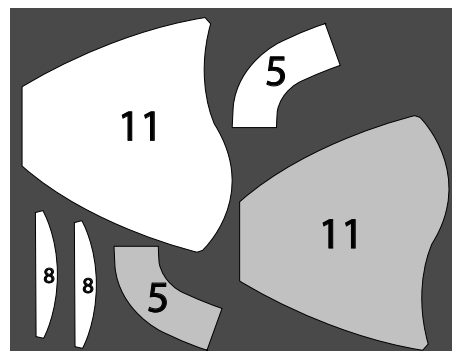


Sizes
22-30

Lengthwise Fold



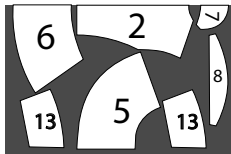
Single Layer



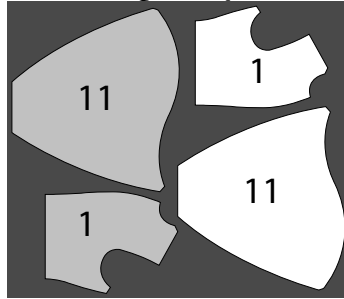
**View C
Sleeve 2
54-60"**

Sizes
2-10

Lengthwise Fold

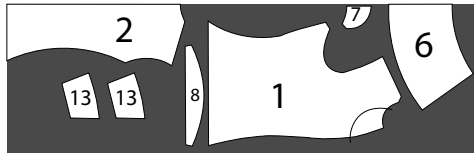


Single Layer

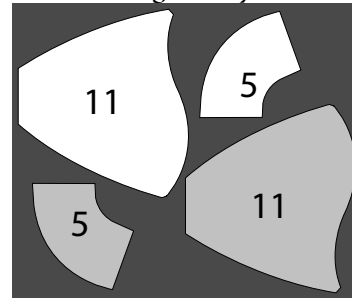


Sizes
12-20

Lengthwise Fold

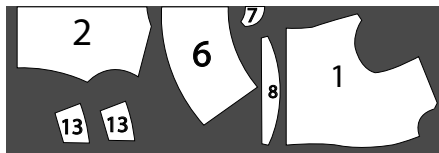


Single Layer

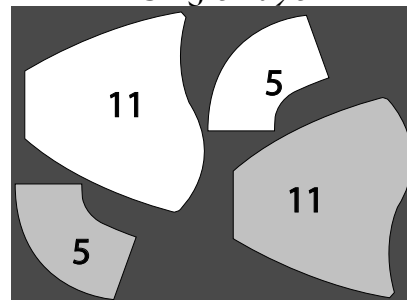


Sizes
22-30

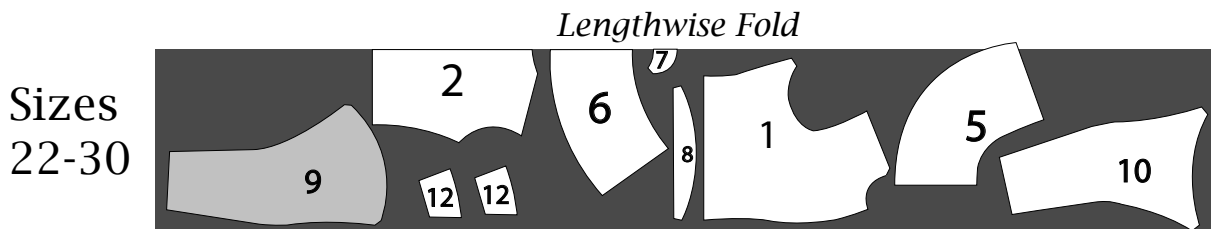
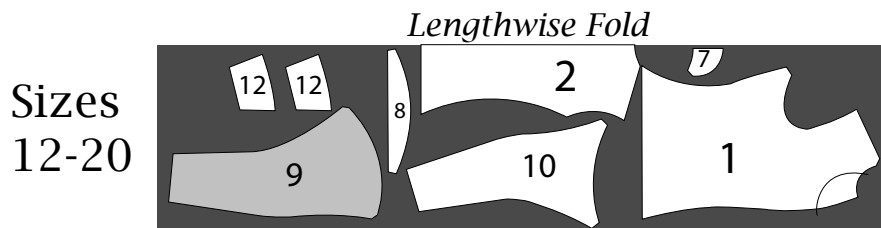
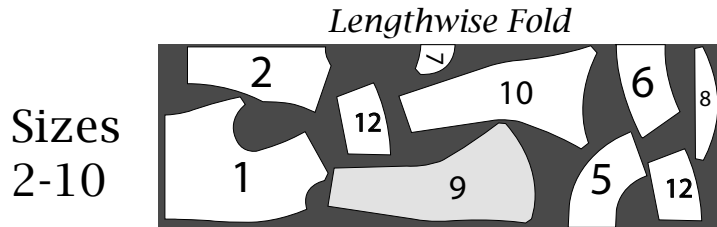
Lengthwise Fold



Single Layer



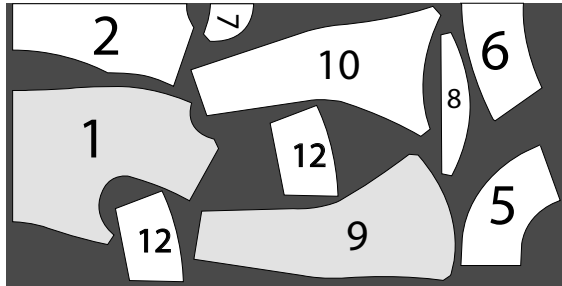
View D
Sleeve 1
45"



View D
Sleeve 1
54-60"

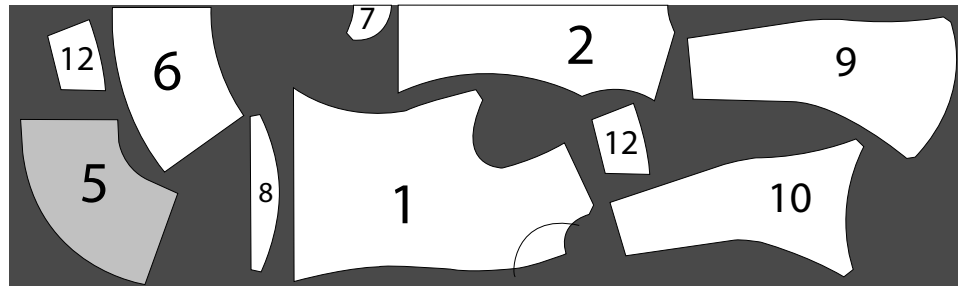
Lengthwise Fold

Sizes
2-10



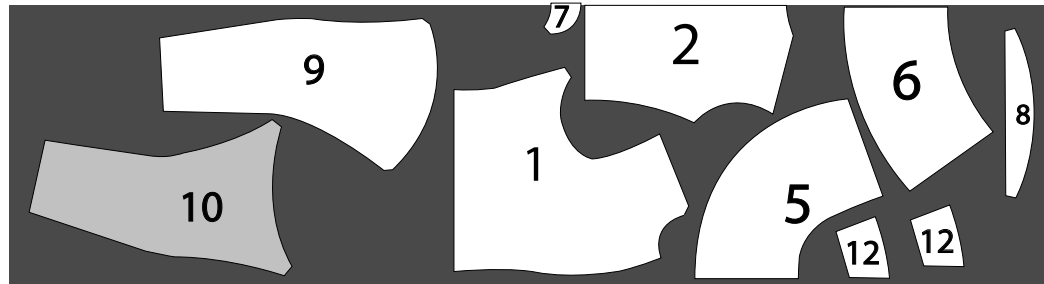
Lengthwise Fold

Sizes
12-20



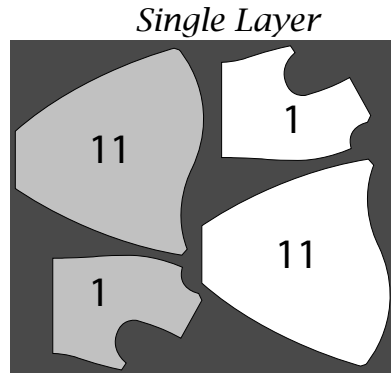
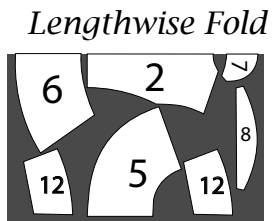
Lengthwise Fold

Sizes
22-30

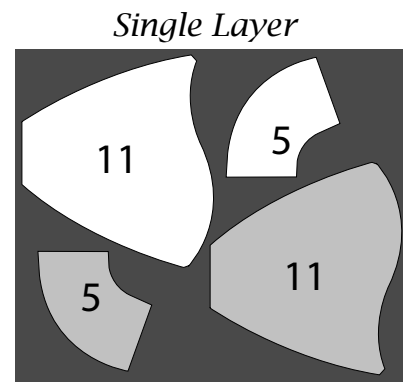
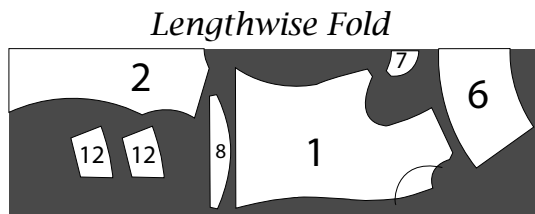


**View D
Sleeve 2
45"**

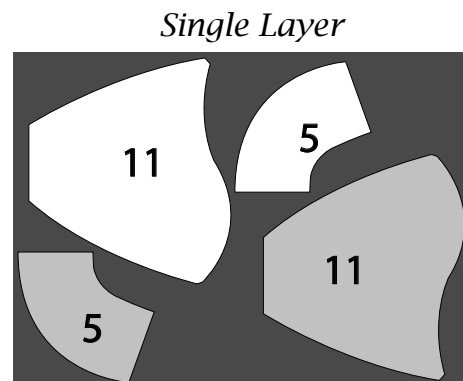
Sizes
2-10



Sizes
12-20



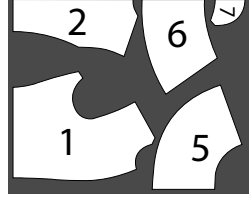
Sizes
22-30



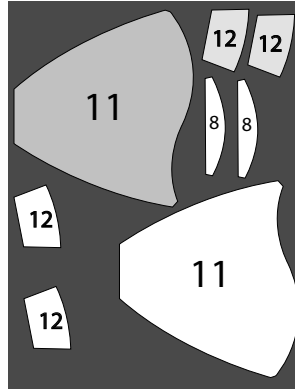
View D
Sleeve 2
54-60"

Sizes
2-10

Lengthwise Fold

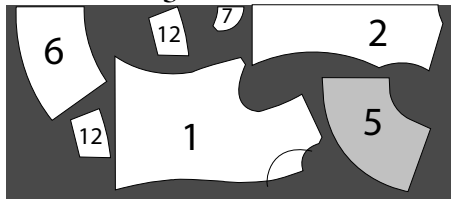


Single Layer

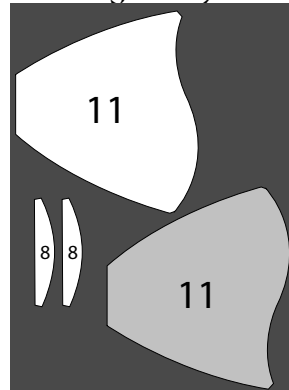


Sizes
12-20

Lengthwise Fold

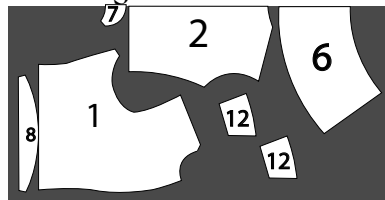


Single Layer

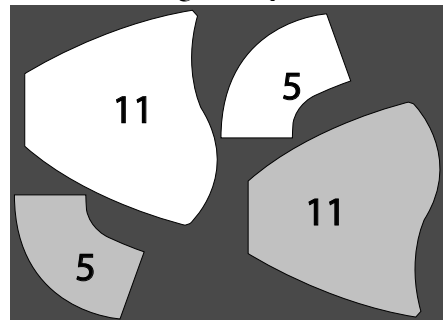


Sizes
22-30

Lengthwise Fold



Single Layer



Lining

For all views with sleeve 1, use the same layouts as for fashion fabric.

For all views with Sleeve 2, use the same layout diagrams as for fashion fabric, but substitute Piece 12 for Piece 11.

Interfacing

Interfacing is only needed if you are using a lightweight fabric that needs support. Since this is not the type of fabric recommended for this pattern, we have not included it in the pattern sheets. If you feel you need it, you may download the interfacing pattern pieces and layout diagrams from our website at www.margospatterns.com.