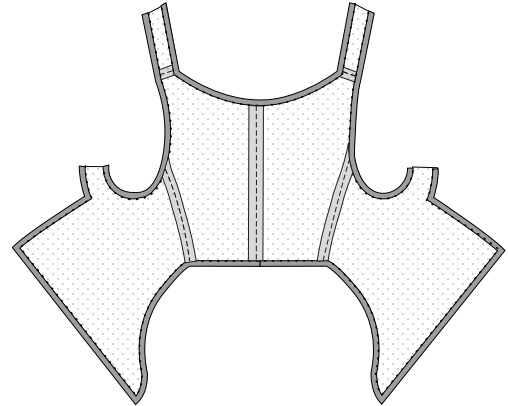


# Attaching Removable Sleeves to the Bodice

Illustration is shown with bodice opened out flat, and without shoulder treatments, for the sake of clarity.

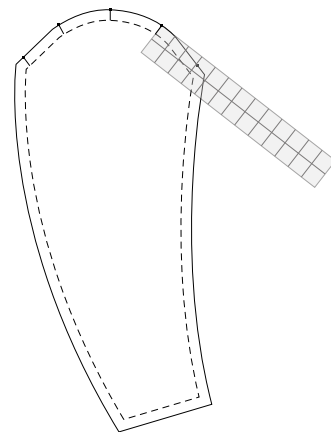


## Mark Placement

### Measure Sleeve

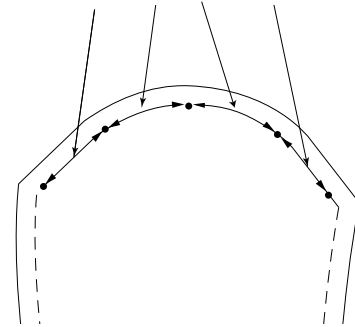
Use a ruler to square lines from point placement marks on Upper Sleeve to seamlines, as shown.

Mark points on seamline.

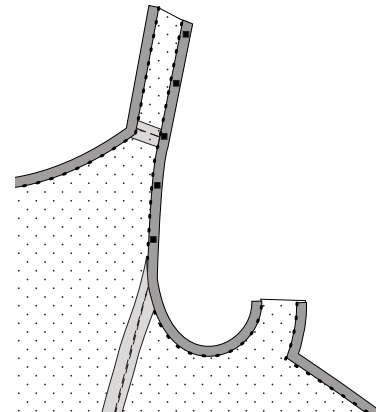


# Measure

Measure between points.

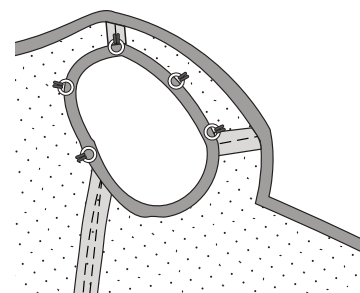


On bodice, mark points, having center point  $\frac{3}{4}$ " forward of shoulder seam.



## Rings

Sew metal rings, such as Roman drapery rings, to the inside of the armhole at the points marked, having rings just inside armhole edge.



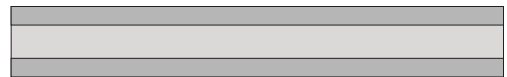
## Strips

Use the same fabric used for flat lining the bodice, or any other sturdy tightly woven fabric.

Cut a rectangle 3" wide and 2" long than the total spacing of the markings on the sleeve.



Press  $\frac{1}{2}$ " of long edges to wrong side.



Repeat for short ends.



Mark with same spacing as above. Make machine buttonholes, eyelets, or apply grommets.



Hand stitch securely to bodice flatlining, having edges just inside bodice edge.

