



KANSO
COFFEE

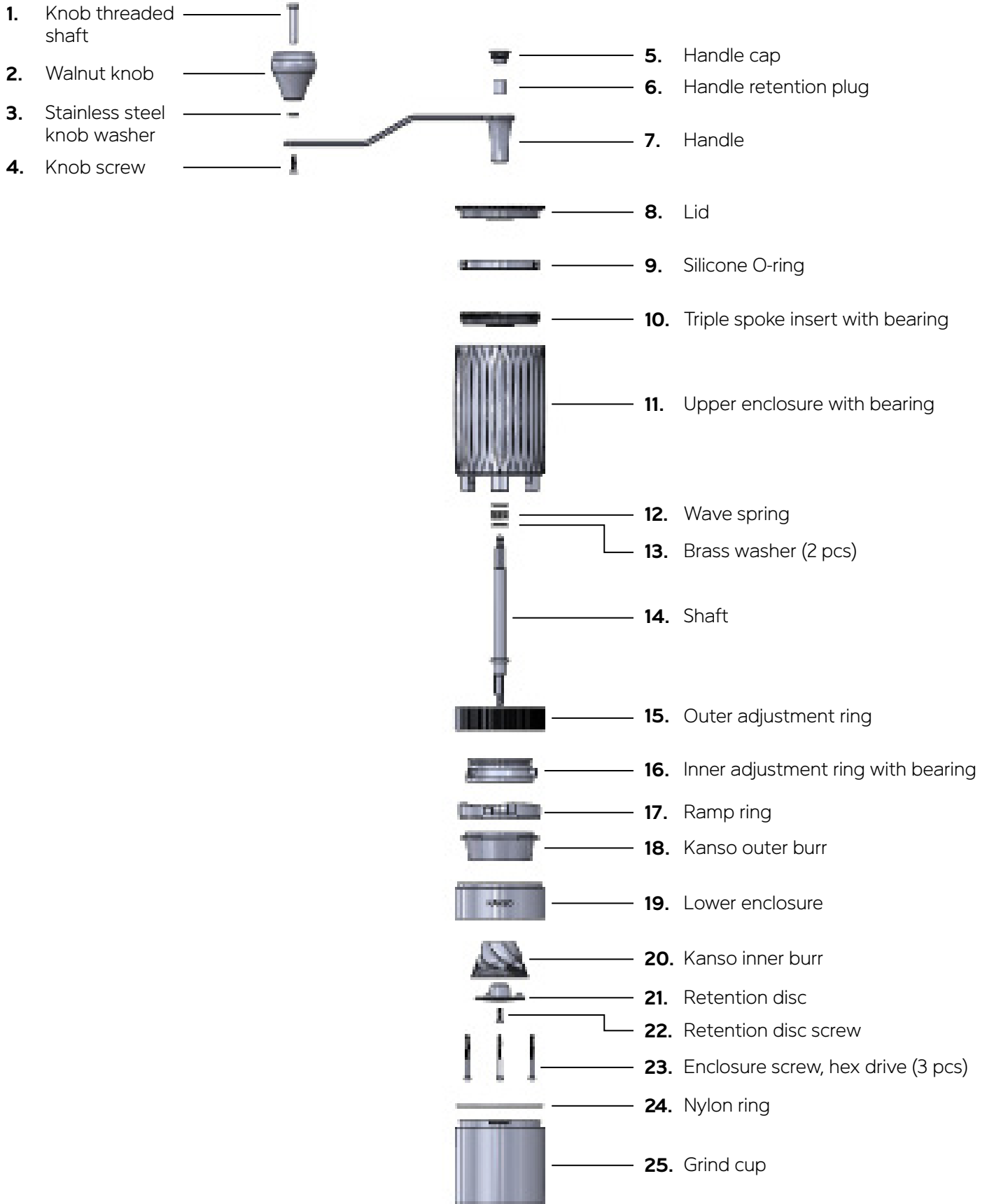
HIKU

The Premium Hand Coffee Grinder // Use & Care Manual

Thank you for your purchase of Hiku, our all-new, premium hand coffee grinder. Engineered from the grounds up, Hiku embodies in so many ways our passion for premium, our love of craft and attention to detail, and our wish to create a unique product that surprises and delights users around the world.

We hope you enjoy Hiku and welcome your stories and feedback at info@kansocoffee.com.

PARTS



ASSEMBLY

Handle

We do not recommend disassembling Hiku completely, as Hiku has already been carefully factory calibrated. If you wish to manually calibrate, please skip ahead to Page 9. Otherwise, see assembly instructions below.



Use a coin to tighten the cap.



Tighten the screw in a counterclockwise direction.

ASSEMBLY

Upper Body Enclosure



Insert the triple spoke plate and thread it into the upper enclosure in a clockwise direction.



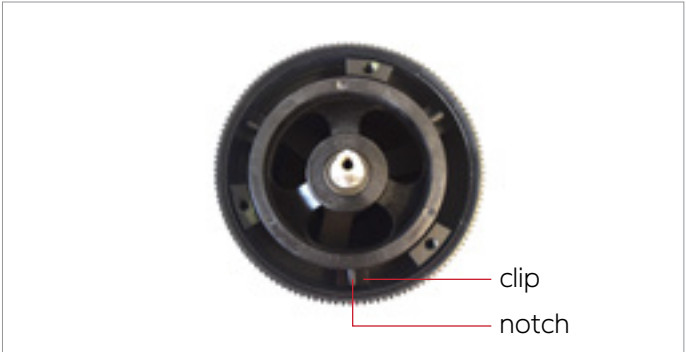
Arrange the two brass washers and the wave spring onto the shaft so that the wave spring sits between the washers.



Insert the top of the shaft into the bottom of the upper enclosure and triple spoke plate.



Slide the inner adjustment ring onto the shaft and the enclosure assembly.



Place the outer adjustment ring on top of the enclosure assembly. Match the three clips of the outer adjustment ring with the three notches of the inner adjustment ring so that it sits flush with the enclosure.

ASSEMBLY

Lower Body Enclosure



Insert the outer burr and the ramp ring into the lower cylinder to form the lower body enclosure.

ASSEMBLY

Main Enclosure



Align the lower body enclosure assembly with the shaft of the upper body enclosure assembly so that the red indicator line is pointing at the scale markings. Using the provided hex key, tighten the three black enclosure screws into the assembly to lock them together.



Insert the inner burr into the combined enclosures and place the black fixation plate on top. Using the provided hex key, tighten the silver retention screw to hold the inner burr and retention plate together.

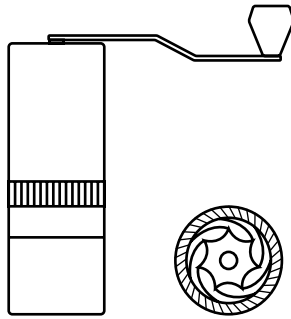
BURR ALIGNMENT

Calibration

Now everything is back in order, but your burrsets may be rubbing and misaligned. By adjusting the three black screws under the grinder enclosure, it will allow the outer burr and inner burr sitting at the same level. It works similar as a 3D printer bed. The way of the calibration is to tightening or loosening screws until the inner burrs have the same distance with the outer burr on two sides. When a screw is tightened, it will increase the gap in the same side and decrease the gap on the other side; and vice versa.

The easiest way will be looking for where the burrs are rubbing against each other, you can either tighten that screw or you can loosen the others. When the outer burr is sitting on the same level with the inner burr, the burrs will be aligned.





www.kansocoffee.com

KANSO
COFFEE

© 2018 Kanso Coffee. All Rights Reserved.
Inquiries: info@kansocoffee.com