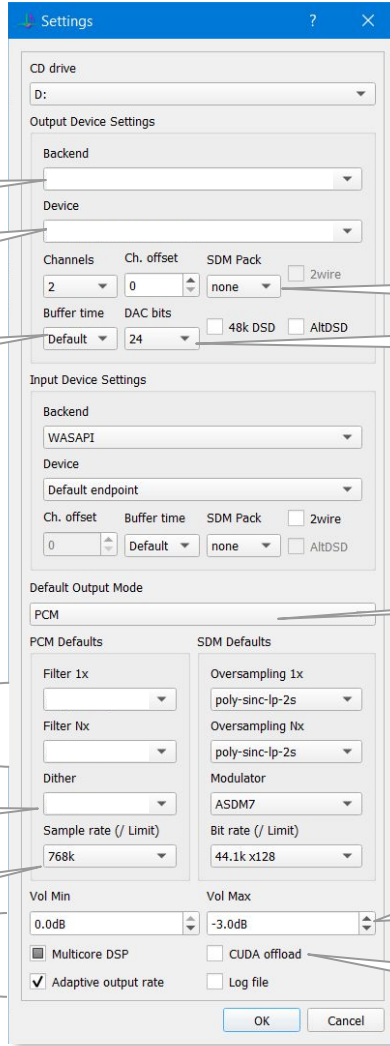


HQPlayer 4.2.X Settings for use with SRC·DX

January 2020

Main (PCM) Settings



WASAPI (Windows 10)

AudioWise SRC-DX

Leave at **Default** unless you have a non-performant system

sinc-L
[Best Sounding - Dan's Pick]
sinc-M
[~WTA1 closest match]

poly-sinc-long-lp, or poly-sinc-ext2
[~WTA1 with less delay]
for Filter 1x & Filter Nx

Dither=**LNS15** for 15th order noise shaping.

768k limit for dual-coax
384k limit for single-coax

Auto **Multicore DSP & Adaptive output rate** upsamples Nx multiples to 705.6/768k

Ignore

Set to **none** since PCM is being output

Always set to **24** bits

Ignore unless live audio input is being processed

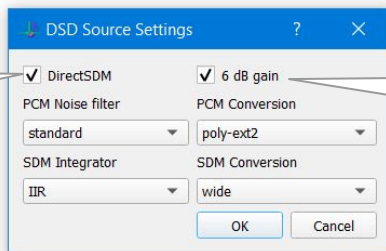
Always **PCM** mode

Ignored when using PCM (DSD to PCM modulator does not use this section)

May be left at 0db since HQPlayer detects and soft clips Gibbs and Inter-Sample overshoots; recommend set to **-3dB** to avoid all clipping

Leave unchecked. PCM CPU usage is not high enough to benefit from this

DSD Settings



Volume control is performed by the DAC so enable this to bypass HQP's own DSD volume control.

These PCM and SDM settings are the best sounding and closely match the DSD specification.

6dB is the standard gain applied so that DSD content plays as loud as PCM albeit with possible clipping. So start at 6dB and adjust down from there.