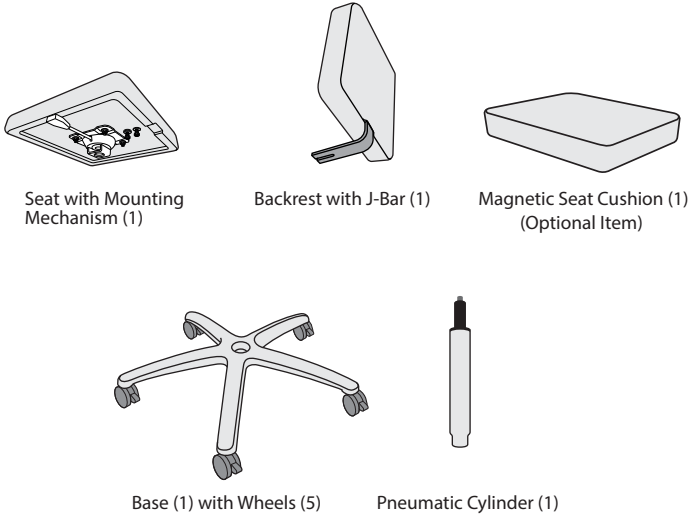


DUET STOOL - ASSEMBLY INSTRUCTIONS

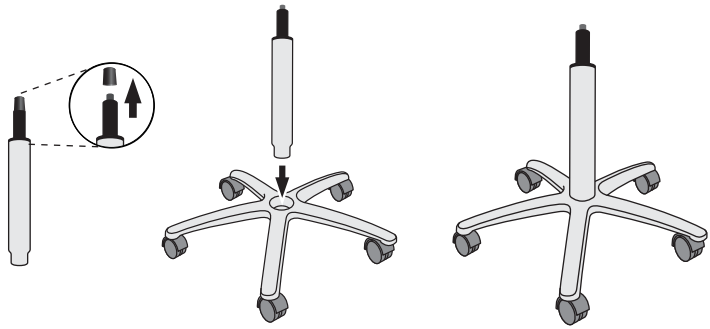


Congratulations on your purchase of the Living Earth Crafts Duet Mani-Pedi Stool. The following instructions will guide you through each step of assembly.

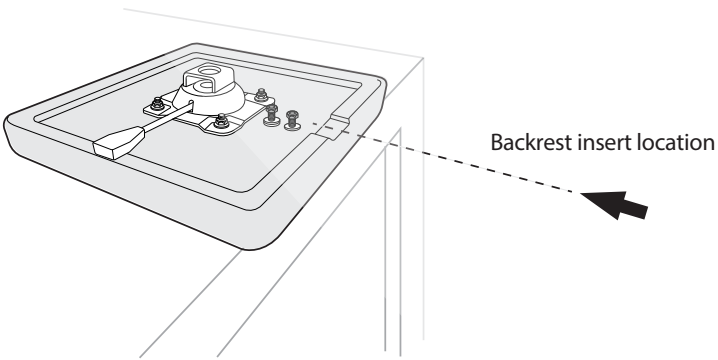
1 Prior to assembly of your stool, verify the following parts are all inside the box. Use caution while handling all the inventory items, since some are heavy.



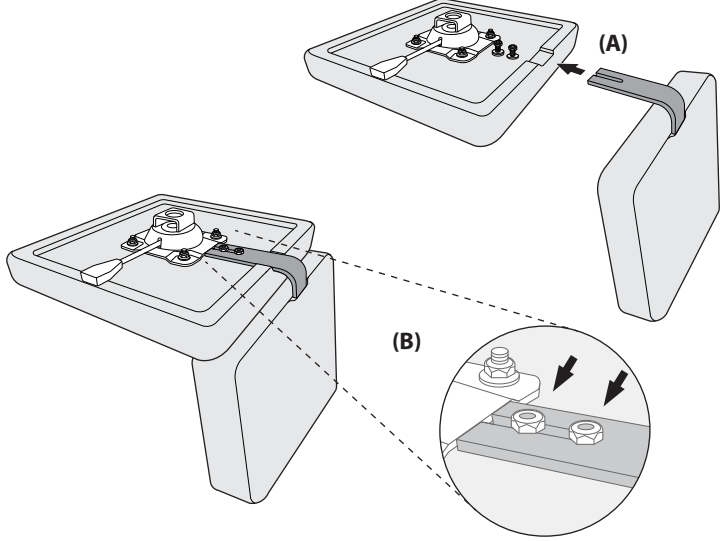
2 Remove and discard black protective cap from the top of the pneumatic cylinder. Insert the pneumatic cylinder firmly into the center of the chrome base and set aside.



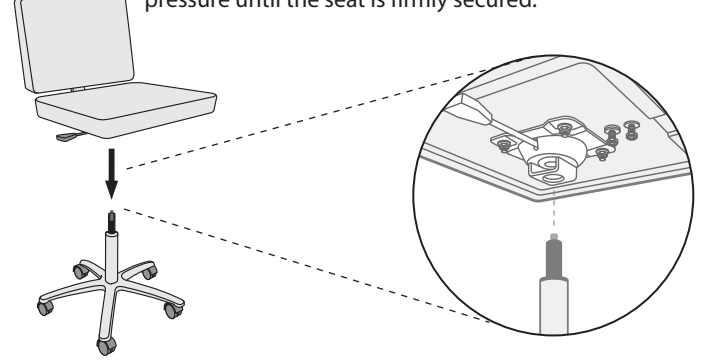
3 Place the seat on a table with the mechanism side facing upward. Have the edge of the backrest facing the edge of the table.



4 Insert the forked end of J-Bar into the open area under the two raised screws with bolts (A). Ensure the J-Bar is inserted all the way until it stops. Tighten the two bolts firmly until the backrest is secure (B).



5 Flip the seat and backrest over and set it down onto the cylinder. Ensure it is inserted correctly into the center of the cylinder mechanism. Sit on the seat and apply ample pressure until the seat is firmly secured.



6 Adjust the height level by lifting the pneumatic handle lever underneath the seat (A), and adjusting it to the desired level. Releasing the handle will secure the seat into position.

The (optional) magnetic seat cushion clicks easily to the rear end of the backrest when not in use (B).

