

ECHO®/VANTAGE® BRAVO® VISION® MODELS

OWNER'S MANUAL



Continuum Footspas, LLC • P.O. Box 363 Brookfield, WI 53008
Toll Free: 1 877 255 3030 • Telephone: 262 754 4900 • Fax: 262 754 4901 • MyContinuumPedicure.com



Pedicure Chairs from Continuum® Footspas

Introduction

The entire team at Continuum® Footspas sincerely thanks you for choosing our pedicure chairs. We fully realize you had a choice and we look forward to making sure you made the right choice. A tremendous amount of time and energy has gone into designing and manufacturing not only beautiful looking pedicure chairs, but pedicure chairs that will perform trouble free for many years.

Throughout this manual, the phrase “Pedicure Chairs from Continuum Footspas” refers to Echo® Vantage®, Bravo®, and Vision® Models.

Please take a moment to read this entire Owners Manual before installation and use.

SAVE THESE INSTRUCTIONS

If you have any questions, concerns or problems, please feel free to call us at 1 877 255 3030.

Very Important Safety Instructions

- Maximum weight capacity of your pedicure chair is 325 pounds.
- Never bring or operate any electrical device in or near your pedicure chair.
- Always enter and exit your pedicure chair very slowly and carefully.
- **NEVER STAND IN THE BASIN.**
- Avoid excessive water temperatures. This can be dangerous and water temperature must be checked before each use.
- Maximum operational water temperature should **never** exceed 105° F (41° C)
- Maximum **supply** water temperature should **never** exceed 150° F (65° C)
Always check state or local codes to verify maximum supply temperatures.

ECHO®/VANTAGE® BRAVO® VISION® MODELS

Limited Warranty

Continuum Footspas has designed and manufactured their pedicure chairs to the highest standards. Accordingly, Continuum Footspas expressly warrants their pedicure chairs as follows:

To the original owner of our pedicure chairs, Continuum Footspas may repair or replace, at its option, any pedicure chairs found to be defective in material or workmanship upon inspection by a factory authorized representative of Continuum Footspas.

This limited warranty covers the following:

- **Components/Parts** - One (1) year from shipment from Continuum Footspas facility.
- **Accessories** - Ninety (90) days from shipment from Continuum Footspas facility.
- **Purchased Replacement Components/Parts** - Ninety (90) days from shipment from Continuum Footspas facility.
- **Labor** - One (1) year from the date of shipment, Continuum Footspas will cover reasonable labor costs associated with the installation of replacement parts found to be defective in material or workmanship upon inspection by a factory authorized representative of Continuum Footspas. No labor costs or replacement parts will be covered under this Limited Warranty if at the sole discretion of Continuum Footspas, it is determined a failure was caused by negligence, accident or improper use, improper installation or lack of proper maintenance as outlined in the Owner's Manual.

The exchange of a pedicure chair is limited to supplying a replacement pedicure chair of equal style. Owner is responsible for all labor and shipping costs necessary to replace a pedicure chair.

NO CONSEQUENTIAL, INCIDENTAL, CONTINGENT, INDIRECT, SPECIAL OR OTHER DAMAGES WILL BE ALLOWED WHATSOEVER. This limited warranty is null and void if the pedicure chair is removed from its original installation, or is not installed in accordance with specifications of Continuum Footspas, or national, state or local codes, regulations and ordinances. Furthermore, this Limited Warranty is null and void if the pedicure chair is subjected to improper installation or maintenance, negligence, improper cleaning or any other circumstances beyond Continuum Footspas control. In order for your Limited Warranty to be valid, your pedicure chair must be installed by a licensed professional in accordance with Continuum Footspas installation instructions.

EXCLUDED FROM LIMITED WARRANTY:

- 1) Unauthorized repairs.
- 2) Damage due to freight, accident, natural disaster and/or abuse.
- 3) Staining, fading or discolorization of the seat, seat back, armrests or leg supports.
- 4) Damage or malfunctions due to improper installation including but not limited to, failure to comply with all national, state and local plumbing, electrical and building codes.
- 5) Fading, discoloration or staining of any part due to improper water additives or harmful cleaning agents or chemicals.
- 6) Damage to drain pump due to obstruction in drain hose and/or debris in pump impeller housing.

Parts for which labor is NOT COVERED - parts noted below are simple to replace and DO NOT require a service technician.

- Jet cover and/or impeller
- Faucet Cartridge and/or Fill-Sprayer
- Footrest
- On/Off air actuated button
- Handheld chair control

For service or information regarding this limited warranty, please contact.

Continuum Footspas, LLC • P.O. Box 363 Brookfield, WI 53008
Toll Free: 1 877 255 3030 • Telephone: 262 754 4900 • Fax: 262 754 4901 • MyContinuumPedicure.com

This Limited Warranty is to the original owner and is not transferable. The original owner agrees by using Continuum pedicure chairs the obligation of Continuum Footspas shall not extend to indirect or contingent damages or injury. Furthermore, the obligations of Continuum Footspas are limited to those set forth herein. This limited warranty is the exclusive remedy and is in lieu of all other warranties, express or limited, including, but not limited to, any implied warranty of fitness or merchantability for a particular purpose. No distributor, dealer or other person has the right or authority to bind Continuum Footspas to changes to this limited warranty. Consequently, Continuum Footspas is not responsible for such warranties or representations.

ADDITIONAL PROVISIONS

- Any assistance Continuum Footspas provides to the original owner above and beyond the scope of this limited warranty does not constitute a waiver of such terms, limitations or exclusions. Furthermore, such assistance does not extend this Limited Warranty.
- Continuum Footspas shall not be liable for any other obligations or liabilities as a result of breach of contract of warranty, negligence or strict liability with regards to their pedicure chairs.
- This Limited Warranty applies only to pedicure chairs installed in any one of the fifty (50) States of the United States, the District of Columbia or provinces of Canada.

Pedicure Chairs from Continuum® Footspas

Very Important Requirements

Every Continuum pedicure chair must be installed by a licensed plumber and licensed electrician. Installation must comply with all national, state and local building codes and/or regulations. Your pedicure chair will not operate properly unless it has sufficient water pressure and temperature, proper drainage and adequate electrical power.

ANY INSPECTIONS OR APPROVALS ARE THE SOLE RESPONSIBILITY OF THE PURCHASER. PRIOR TO INSTALLATION, ONE SHOULD CONTACT THEIR LOCAL BUILDING INSPECTOR TO MAKE SURE ALL LOCAL CODES ARE COMPLIED WITH.

SAVE THESE INSTRUCTIONS

WARNING!!! Possible Health Risks

If your client experiences any pain or discomfort while using any Continuum pedicure chair, discontinue use immediately.

Clients whose feet or legs are inflamed for any reason or clients who have open wounds should **never** be allowed to use a pedicure chair. If there is any sign of fungal infection, fracture, swelling or persistent pain, clients should consult their physician before using a pedicure chair. Diabetics should always consult their physician prior to receiving a pedicure.

Pedicure Chairs from Continuum® Footspas

Important Utility and Installation Requirements and Instructions

SAVE THESE INSTRUCTIONS

Electrical Service

A separate, 120V, 60HZ, 15 amp GFCI protected grounded circuit **MUST** be used to supply power to each pedicure chair. Failure to do so renders the Limited Warranty null and void.

**NOTE: IF INSTALLED IN CANADA THIS UNIT MUST BE IN ACCORDANCE WITH
THE CANADIAN ELECTRICAL CODE, PART 1.**

Grounding and GFCI Requirements

WARNING - When using electrical products, basic precautions should always be followed, including the following:

- 1. DANGER: RISK OF ELECTRIC SHOCK.** Connect **ONLY** to a circuit protected by a ground-fault circuit-interrupter (GFCI).
- 2. GROUNDING IS REQUIRED.** Every Continuum pedicure chair **MUST** be installed by a licensed electrician and **MUST** be properly grounded.

**DO NOT IN ANY WAY MODIFY THE PLUG PROVIDED ON YOUR PEDICURE CHAIR.
NO ADAPTER SHOULD BE USED WITH ANY CONTINUUM PEDICURE CHAIR.**

WARNING:

TO REDUCE THE RISK OF BURNS, ELECTRIC SHOCK, FIRE OR INJURY TO PERSONS:

- Any servicing of your pedicure chair must be performed by authorized service personnel only.
- **DO NOT** operate your pedicure chair if it has a damaged cord or plug.
- Keep cord away from heated surfaces.
- **DO NOT** use outdoors.

Hot/Cold Water Supply and Drain

- All plumbing connections must conform to all national, state and local codes.
- Shut-off valves are strongly recommended per plumbing codes.
- Maximum water temperature must not exceed 105° F (41° C)
- Maximum **SUPPLY** water temperature must not exceed 150° F (65° C)
- Hot/Cold water supply and drain connections are located in the back of pedicure chair.
- When utilizing optional factory installed drain pump, in-line backflow prevention is provided.
- If pedicure chair is plumbed utilizing drain pump and drain hose; the drain hose connecting the pedicure chair to the wall connection (drain) must be 3/4" ID.
- Size of supplied plumbing fittings:

Hot/Cold water supply: 1/2" NPT (male)

Drain Pump: 3/4" NPT (male)

Pedicure Chairs from Continuum® Footspas

Instructions Pertaining to a Risk of Fire, Electric Shock or Injury to Persons

Important Safety Instructions

WARNING - When using Continuum pedicure chairs, basic precautions **MUST** be followed, including the following:

- 1. READ AND FOLLOW ALL INSTRUCTIONS.**
- 2. WARNING: RISK OF ACCIDENTAL INJURY OR DROWNING. CHILDREN SHOULD NOT USE PEDICURE CHAIRS WITHOUT ADULT SUPERVISION.**
3. Use your pedicure chair only for its intended use as described in this manual. Do not use attachments not recommended by the manufacturer.
- 4. WARNING: RISK OF ELECTRIC SHOCK. DO NOT PERMIT ELECTRIC APPLIANCES (SUCH AS A HAIR DRYER, LAMP, TELEPHONE, RADIO, OR TELEVISION) WITHIN 5 FEET (1.5 M) OF YOUR PEDICURE CHAIR.**
5. Do not operate your pedicure chair without the jet cover attached to the Jet.
6. Any Continuum pedicure chair must be connected only to a supply circuit that is protected by a ground fault circuit-interrupter (GFCI). Such a GFCI should be provided by the installer and should be tested on a routine basis. To test the GFCI, push the test button. The GFCI should interrupt power. Push the reset button. Power should be restored. If the GFCI fails to operate in this manner, the GFCI is defective. If the GFCI interrupts power to the pedicure chair without the test button being pushed, a ground current is flowing, indicating the possibility of an electric shock. Do not use your pedicure chair. Disconnect the pedicure chair and have the problem corrected by a qualified service representative before using.
- 7. GROUNDING IS REQUIRED.** Your pedicure chair **MUST** be installed by a qualified licensed electrician and **MUST** be properly grounded. **DO NOT IN ANY WAY MODIFY THE PLUG PROVIDED ON YOUR PEDICURE CHAIR. NO ADAPTER SHOULD BE USED WITH YOUR PEDICURE CHAIR.**
- 8. SAVE THESE INSTRUCTIONS.**

WARNING

Any service that may be required **MUST** be performed by a qualified service representative.

Pedicure Chairs from Continuum® Footspas

Unpacking

Continuum pedicure chairs require very little assembly.
Remove and discard all packing and lifting materials.

Installation Instructions

EVERY CONTINUUM PEDICURE CHAIR MUST BE INSTALLED BY A LICENSED PLUMBER AND A LICENSED ELECTRICIAN. INSTALLATION MUST COMPLY WITH ALL NATIONAL, STATE AND LOCAL BUILDING CODES AND/OR REGULATIONS. FAILURE TO COMPLY WITH THESE CODES AND/OR REGULATIONS WILL RESULT IN THE LIMITED WARRANTY BEING NULL AND VOID.

Install to Permit Access for Servicing

In order to ensure access after installation, please refer to installation drawings available at MyContinuumFootspas.com.

Extremely Important

Each pedicure chair **MUST** be anchored to the floor. This is especially critical if pedicure chair is gravity drained with or without air gap. There are two (2) black mounting brackets supplied with each pedicure chair for this purpose. **Your warranty may be null and void if pedicure chair is not properly secured to floor.**

Installation Instructions:

Step 1

Utilizing a level, carefully adjust the four (4) leveling feet (Echo/Vantage models only). It is extremely important that your pedicure chair is level. **(Note: All leveling feet have been factory adjusted prior to shipment. In most cases no further adjustment should be necessary).**

Step 2

Mounting brackets are to be used **on only two (2) of the four (4) main frame leveling feet** (Echo/Vantage models only). Slotted portion of the mounting bracket fits between frame and the leveling foot (one in front, one in back, opposite of each other). The flat portion with holes should be positioned to the floor. Use appropriate hardware to secure to the floor (not supplied).

Location and Support

The floor structure must be level and capable of supporting the occupied pedicure chair. Refer to installation drawings at MyContinuumPedicure.com

Pedicure Chairs from Continuum® Footspas

User Maintenance Instructions Cleaning and Disinfecting

IMPORTANT

YOU ARE REQUIRED TO CHECK WITH YOUR STATE BOARD FOR MANDATORY CLEANING AND DISINFECTING REQUIREMENTS AND PROCEDURES.

The following procedures are important guidelines that will help in keeping your pedicure chair clean and trouble free for years. It is extremely important to clean and disinfect each and every pedicure chair after each pedicure, after the last pedicure of the day and once a week for overnight cleaning.

A SPECIAL NOTE PERTAINING TO BLEACH

While bleach seems to be used extensively for cleaning and disinfecting of pedicure chair basins, it is NOT recommended nor is it effective. Moreover, excessive use of bleach may greatly reduce the longevity of your pedicure chair internal components (i.e. pumps, jet, waste assembly, etc.). Excessive and repeated use of bleach may also void your warranty. **CONTINUUM FOOTSPAS STRONGLY RECOMMENDS NOT USING BLEACH TO CLEAN YOUR PEDICURE BASIN.** As always, you are required to check with your state board for mandatory cleaning and disinfecting requirements and procedures.

Cleaning and Disinfecting Products

Your state board requires disinfecting of your pedicure tub. Continuum recommends “**Splish Splash One-Step Disinfectant.**” The following page outlines product benefits for all pedicure chairs together with contact information.

While other EPA registered products are available for maintaining pedicure tubs, we have found [Splish Splash](#) to be the most effective, multi-purpose and economical product on the market.

A great deal of effort has gone into assuring the wood finish on your pedicure chair is chemical and water resistant. Use of other brands of cleaning and disinfecting solutions may damage the wood finish and void the Limited Warranty.

After Each Client Procedures

- 1. Drain** all water from the basin.
- 2. Scrub all visible residue** from the inside walls of the basin with a brush or liquid soap and water. Use a clean and disinfected brush with a handle. Brushes must be cleaned and disinfected after each use.
- 3. Rinse** the basin with clean water.
- 4. Refill the basin** with clean water and circulate the correct amount (read the label for mixing instructions) of the EPA Registered Liquid Disinfectant through the basin for 10 minutes.
- 5. Drain, rinse and wipe** dry with a clean **paper** towel.



One-Step Disinfectant

EPA APPROVED AND LICENSED IN ALL 50 STATES!

Introducing:
Splish Splash One-Step Disinfectant
 Clean and Disinfect your Salon with just One Product!

PEDICURE SPA

For Pedicure Spas and Tubs, add one (1) Fluid Ounce of Splish Splash One-Step Disinfectant for each one (1) gallon of water. Allow water to circulate for 10 minutes. Drain and rinse with clean water.

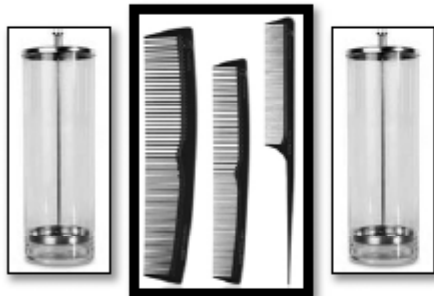


TOOL DISINFECTION

For tool disinfection, mix one (1) Fluid Ounce of Splish Splash One-Step Disinfectant with one (1) gallon of water. Allow tools to soak for ten (10) minutes. Remove tools from solution. Rinse with clean water and dry.

HARD SURFACES

For hard non-porous surfaces throughout salon, including manicure stations and countertops, mix one (1) Fluid Ounce of Splish Splash One-Step Disinfectant in one (1) gallon of water. For spray bottle, mix 1/4 Fluid Ounce of One Step Disinfectant in 32 Ounces of water. Sponge or spray on, wait ten (10) minutes and wipe dry.



PLASTIC INSTRUMENTS

For plastic instruments, mix one (1) Fluid Ounce of Splish Splash One-Step Disinfectant with one (1) gallon of water and fill your sterilization jars. Plastic instruments may remain immersed until ready for use.

Additional Uses: To disinfect and sanitize tanning beds and towels.

One-Step Disinfectant by Splish Splash...
The Economical Way To Meet All Your Salon's Disinfectant Needs.

Please read Splish Splash One-Step Disinfectant label for complete usage instructions.

www.splishsplashcleaners.com - (847) 438-0800

Pedicure Chairs from Continuum® Footspas

End of Each Day Cleaning Procedures

1. **Remove** the cover and impeller from the Jet. No tools are required. Simply grip the cover and gently twist off. To replace, position cover on front of jet, turn gently to lock. Turn “left-handed” screw to remove impeller. (Luraco Dura-Jet® only)
2. **Clean** the screen and the area behind it with a brush, liquid soap and water to remove all visible residue and replace properly cleaned screen and impeller.
3. **Fill** the basin with warm water and chelating detergent and circulate the chelating detergent through the spa system for 5-10 minutes (follow manufacturer’s instructions).
4. **Drain** the soapy solution and rinse the basin.
5. **Refill the basin** with clean water **and circulate** the correct amount (read the label for mixing instructions) of the EPA Registered Liquid Disinfectant (Splish Splash is strongly recommended) through the basin for 10 minutes.
6. **Drain, rinse** and wipe dry with a clean **paper** towel.
7. Allow the basin to dry completely.

At least once each week overnight procedures:

After completing the End of Each Day procedures:

1. Do not drain the liquid disinfectant solution - Turn off the unit and leave the disinfecting solution in your pedicure chair at least 6 to 10 hours.
2. In the morning drain and rinse.
3. Refill the basin with clean water and flush the system.

**YOUR ARE REQUIRED TO CHECK WITH YOUR STATE BOARD FOR
MANDATORY CLEANING AND DISINFECTING REQUIREMENTS AND PROCEDURES.**

Pedicure Chairs from Continuum® Footspas

Care and Maintenance

Formica finishes require very little maintenance. Wipe dry any water that may splash onto the Formica. If you have purchased a model that is made out of fiberglass, one can use a product called Gel Gloss®. It's available at most hardware stores and works very well.

Basin-Acrylic/Glass/Fiberglass

Follow State's cleaning and disinfecting procedures. **Never use abrasive cleaners or pads on acrylic, glass or fiberglass basins.**

Basin-Solid Surface (Available on Echo only)

If you ordered the optional Solid Surface basin, use Scotch Brite pads #6448 or #7448 to clean and renew the basin. Periodic use of these pads together with an abrasive cleaner (ie. Bar Keeper's Friend®) will keep your basin looking great for years to come.

Upholstery

Simply use a mild detergent with warm water and gently clean any dirt or grime that may appear on the seat, seat back or arms. The leather-like material is very durable and with reasonable care should look like new for many years.

Leg Supports

Once again, a mild detergent and warm water is all that is needed to clean the footrests. However, as previously noted, care should be taken to prevent nail polish or acetone from coming in contact with the footrest. These products may damage or discolor the outer "skin" of the cushions. **Never use any abrasive cleaners.**

Massage Systems

SE Models: The massage system located in the back portion of the chair is accessible by unzipping the zipper located on the back of the chair. This allows for removal of the upholstered chair cover and access to the roller massage system.

LE Models: Same as above, except accessing the rolling/kneading massage is from the front of the seat back. The front cover is attached by a zipper or Velcro®. Simply remove this front cover to gain access to the massage mechanism.

Echo Plus/Vantage Plus: The massage mechanism on the LE Models requires little maintenance. However, since it is a "Full Function" system there are more parts that may need lubrication or service eventually. If the mechanism becomes excessively noisy, a very little light grease may be applied to the tracks. Massage mechanism may be accessed by unzipping the back cushion.

CAUTION: Make sure grease ever comes in contact with pulley belts as they will become slippery and fail.

Pedicure Chairs from Continuum® Footspas

SAVE THESE INSTRUCTIONS

OPERATING INSTRUCTIONS

NOTE: Please read these instructions carefully before operating your pedicure chair.

CAUTION: To avoid injury and irreparable damage, always remain seated when using your pedicure chair. **NEVER STAND ON OR IN THE BASIN.**

SPECIAL WARNINGS

- If you have any concerns regarding your health, consult your doctor before using your pedicure chair.
- Never use any pedicure chair on open wounds, or any area of the body that is swollen, burned, inflamed or where skin eruptions or sores are present.
- Consult your doctor before using a pedicure chair if you have diabetes, as diabetes can contribute to foot problems including decreased feeling or circulation to the feet.
- Use of this product should be pleasant and comfortable. Should pain or discomfort result, discontinue use and consult your physician.

WARNING: WHEN USING CONTINUUM PEDICURE CHAIRS, BASIC PRECAUTIONS SHOULD ALWAYS BE FOLLOWED, INCLUDING THE FOLLOWING:

1. **READ AND FOLLOW ALL INSTRUCTIONS.**
2. **DANGER:** To reduce the risk of injury, do not permit children to use pedicure chairs unless they are closely supervised at all times.
3. Use your pedicure chair only for its intended use as described in this manual. Do not use attachments not recommended by manufacturer. Do not tamper with your pedicure chair.

After your pedicure chair is installed and the plumbing and electrical connections are made, clean and disinfect the basin before initial use.

YOU ARE REQUIRED TO CHECK WITH YOUR STATE BOARD FOR MANDATORY CLEANING AND DISINFECTING REQUIREMENTS AND PROCEDURES.

Handheld Rolling/Kneading Back Massage Control Wand (SE Model)



SE Model Chair

Handheld Rolling/Kneading Back Massage Control Wand



The SE Chair features a combination rolling and kneading Shiatsu massage. The rollers move vertically up and down the center back or can remain in one specific area.

Step #1) Note red light located above ON/OFF button. Massage system will NOT operate if light is blinking. Press red ON/OFF button once to obtain a steady light.

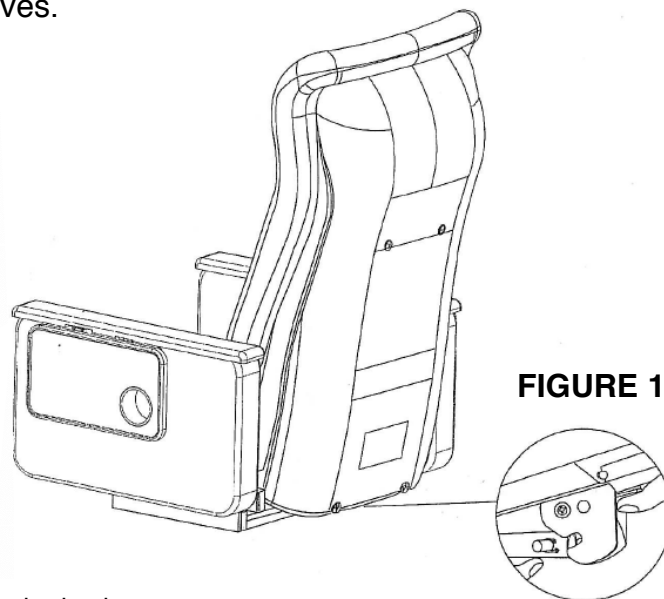
Step #2) Press one (1) of three (3) buttons to activate the area of back massage desired: Upper, Lower or Full.

Step #3) Massage will automatically shut-off after twenty-five (25) minutes of continuous operation. If one desires to shut massage off before the twenty-five (25) minute cycle, simply press ON/OFF button. All lights will begin to blink as the massage rollers return to their “home” position located underneath the headrest pillow

LE MODEL CHAIRS

ASSEMBLY INSTRUCTIONS

Step #1) The back portion of the LE model chair is shipped facing down. It is held in place during shipping by four (4) plastic ties. Cut all plastic ties and gently move the chair into an upright position, making sure the back remains located in the pivot grooves.



Step #2) Once the chair back is in an upright position, locate the latch at the bottom of the back. (See Figure 1) This latch connects the chair back to the seat base. Located under the seat base is an actuator with a short, steel connecting pin. (See Figure 2) In order to engage this pin and latch, this pin **MUST** remain in a perfectly horizontal position. (See Figure 2 once again) This is very important as it will be impossible to engage the latch and pin if the pin is not in a horizontal position. Gently move the chair back until the pin engages into the latch. Since the latch utilizes a spring, you will hear a click when they are properly connected.



FIGURE 2

If it ever becomes necessary to disconnect the chair back from the seat base, simply press the lever on the latch to disconnect.

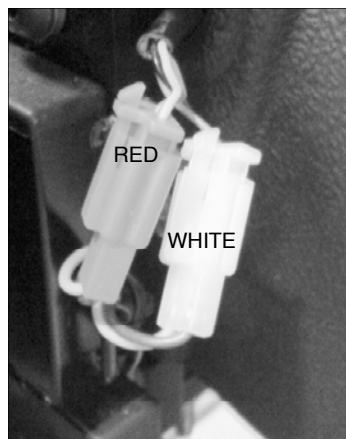


FIGURE 3

Step #3) Plug the two (2) wire connectors together. They are located near the back of the chair. Connect both white connectors together and both red connectors together. (See Figure 3)

Step #4) Locate seat bottom cushion. Place it on the seat base making sure it's as far back as possible and even from side to side. This seat cushion is held in place with Velcro. There should be no visible gaps between the seat cushion and the back cushion.

Important Notes:

- Do not discard the extra chair fuses in the plastic bag. They are replacements if needed.
- To increase overall intensity of massage, simply unzip the seat back cushion and remove the 1" thick foam insert between the rolling mechanism and the cushion. The foam insert is held in place with Velcro.
- To raise manicure trays, simply move them to a horizontal position until you hear a click that locks the tray in place. To lower trays, press up on the lever located at the end of the support bracket and at the same time; gently push the tray upward to disengage the latch.

Handheld Shiatsu Back Massage Control Wand (LE Models Only)

POWER ON/OFF

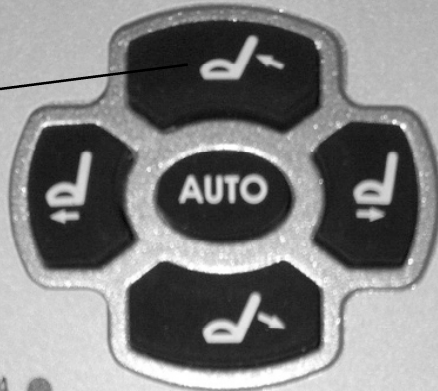


HIGH
MID
LOW



POSITION
User's height (HIGH/MID/LOW)

INCLINE/RECLINE
Continue pressing to move chair to intended angle



FORWARD BACKWARD
Continue pressing to move chair to intended position

AUTO (A or B)
Pre-programmed automatic massage cycles

A
B
AUTO

30
20
10



MANUAL TIMER
Press for manual mode with time selection of 10-30 minutes

WHEEL ADJUSTMENT
Adjust massage wheels up and down to intended position

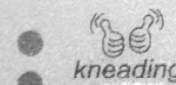


FULL
SPOT
PARTIAL



MASSAGE RANGE
Three (3) Selections FULL/SPOT/PARTIAL

KNEADING
Three (3) selections of kneading intensity



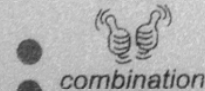
kneading



tapping

TAPPING
Three (3) Selections of tapping intensity

COMBINATION
Kneading/tapping/knocking simultaneously



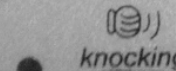
combination



tapping width

TAPPING WIDTH
Adjust tapping width

KNOCKING
Impulse tapping massage



knocking

Pedicure Chairs from Continuum® Footspas

Operational Summary Technician Operated Controls/Features

FILLING/SPRAYING

Locate the chrome hot/cold water valve handle on the front or side of your pedicure chair. This valve handle controls both the flow of water and the temperature of water. **Note:** The sprayer/filler has a dual function; it is both a sprayer and filler for the basin.

TO FILL

LIFT AND TURN water valve handle, adjust water temperature and flow. When desired water temperature is achieved, close “Pop-Up” in bottom of basin by turning chrome drain handle located on right side of base.

When water level reaches a point approximately one (1) inch ABOVE the top edge of the jet, shut water off by pressing down on handle. **If optional I-Fill™ (Auto Fill) was ordered, refer to Operating Instruction Sheet included in this Owner’s Manual.**

Note: Jet MUST be fully submerged in water before operating.

TO DRAIN

With optional factory installed drain pump:

Step 1) Gently turn chrome drain handle located on right side of base.

This activates “Pop-Up” located on bottom of basin allowing water to drain.

Step 2) Press chrome button marked “DRAIN.”

This will activate drain pump. When basin is fully emptied, depress button once again to turn pump off. **VERY IMPORTANT! When draining basin, ALWAYS perform Step 1 before Step 2. NEVER reverse the steps as this may cause the pop-up to become jammed in the waste assembly.**

Note: Drain pump will automatically turn off in two (2) minutes if button is not pressed a second time.

GRAVITY DRAIN

Step 1) Gently turn chrome drain handle located on right side of base.

This activates “Pop-Up” located on bottom of basin allowing water to drain.

Cleaning and Disinfecting after Draining

YOU ARE REQUIRED TO CHECK WITH YOUR STATE BOARD FOR MANDATORY CLEANING AND DISINFECTING REQUIREMENTS AND PROCEDURES.

WARNING: It is extremely important to follow the cleaning instructions provided by your State Board. Failure to clean your pedicure chair adequately can result in serious health issues for your clients as well as the nail technician. Failing to clean your pedicure chair may also cause it to work improperly. Regular cleaning will keep your pedicure chair in good working condition.

Pedicure Chairs from Continuum® Footspas

Dual Stream Jet

After basin is filled to proper level, turn jet on by pressing chrome button marked “JET”. To turn off, press “JET” button a second time.

Note: If optional I-Fill™ (Auto Fill) was ordered, refer to Operating Instruction Sheet included in this Owner’s Manual.

The jet may have a special screw (left handed) that secures the impeller to the motor shaft. The impeller is located behind the removable cover. Simply unscrew and remove the impeller for cleaning and disinfection. (No tools are required; it is hand tightened) Re-attach impeller utilizing the special screw and **hand tighten only**. (Luraco Dura-Jet® only)

If optional “magnetic jet” has been ordered, entire front jet housing is removable for cleaning and disinfecting. The impeller is held in place by a strong magnet. This “magnetic jet” also allows for use of plastic liners if desired.

Some models are equipped with LED light. If this is the case, light will operate only when jet is running. There are seven (7) colors that change automatically.

WARNING: DO NOT ATTEMPT TO OPERATE JET WITHOUT WATER!

PLEASE NOTE:

Pedicure chairs assembled and shipped during Wisconsin winter months are tested using a pink RV anti-freeze solution. It is perfectly normal for a small amount of this pink fluid to remain within the plumbing system. To eliminate any traces of RV anti-freeze, simply fill and operate your pedicure chair several times before actual use.

Adjustable Center Leg Support with Adjacent Foot Rests

(Applies to Models with Three (3) Piece Footrest Assemblies Only)

An exclusive and patent pending Center Leg Support System is another unique feature of your pedicure chair. Simply turn the black knob located underneath the center leg support to maintain the desired height of the leg support. It is necessary to firmly tighten the knob to ensure leg support maintains desired height. Loosen the black knob to lower leg support.

IMPORTANT: All three (3) footrests are chemical (acetone) resistant. However, care should be taken to prevent repeated exposure to harsh chemicals. Continuum Footspas recommends the use of a small towel during the pedicure to help protect these cushions. We also recommend the use of Splish Splash disinfectant solution.

ATTACHING MANICURE TRAYS

Optional manicure trays are available. Note: Manicure trays are included on all LE models. If manicure trays are ordered with your pedicure chair, brackets may be factory installed. Simply attach the trays with provided wood screws making sure they fit tightly against upholstered arms.

Pedicure Chairs from Continuum® Footspas

Operating Instructions for i-Fill™ System (Auto Fill)

(Auto Fill is a Factory Installed Option)

Step #1) LIFT AND TURN chrome handle for Hot/Cold water valve located in front of spa. Make sure drain pop-up is in the up position allowing water to drain from basin.

Step #2) Press “i-Fill-Auto” button to begin water flow. If spa has optional drain pump, one must also start the drain pump by pressing button marked “PUMP”. When water reaches desired temperature; turn drain handle to lower pop-up. Water flow will automatically stop and jet will start running when water level reaches preset level (Jet has a built-in one (1) hour timer). Jet may be shut off manually by pressing Jet Icon located on the i-Fill button. Press button a second time to restart jet (See picture below). To add additional water; press Faucet Icon located on i-Fill button (See picture below). Press button a second time to stop water flow. There is an audible tone as additional water is being added to basin.

VERY IMPORTANT (Applies ONLY to i-Fill Equipped Spas)

In order to prevent hot/cold water from mixing inside an *open* water valve; once water stops flowing close valve handle by gently pushing it to the down position. Furthermore, Neoperl check valves have been installed on the brass hot/cold water inlets located in back of spa. This will prevent any cross connection of hot/cold water.

There are two (2) small, round stainless steel sensors located on front face of jet housing. They are similar to a screw-head without a slot. In order to ensure the i-Fill system works properly, they **MUST** be cleaned periodically with a little rubbing alcohol.

Adjusting Sensor Delay Time Setting

As a result of water pressure and/or basin size, it may be necessary to change the amount of time water flows **after** reaching the sensors located on the jet body. If this is the case, please note the following:

A green colored control box is located underneath the left curved plastic shroud (When facing spa). Removing this curved shroud is quite easy. (Note: Because of space constraints, the control box is mounted upside down.)

On the side of the control box is a blue LED light. Next to it is a blue circle control. Utilizing a small screwdriver, GENTLY turn the arrow inside the circle to read from 5 seconds to 55 seconds. By turning the arrow and changing the time delay; more or less water will fill the basin. For safety purposes, there is a four (4) minute water flow timer built into the control box.

