

## “Nude” square dining table / mesa cuadrada

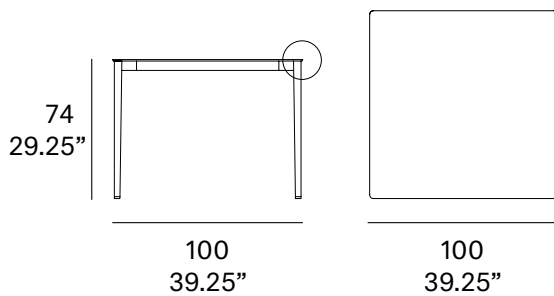
C130

OUT



Structure made of stainless steel tube, finished with polyester powder. Two tabletop options: Trespa® HPL 8 mm/0.31" thick and Kerlite® porcelain. Delivered unassembled.

*Estructura fabricada en tubo de acero inoxidable, acabado en pintura de polvo de poliéster. Dos opciones de tablero: HPL Trespa® de 8 mm y porcelánico Kerlite®. Se sirven desmontadas.*



### Shipment details

Qty 1 dining table (1 box)

Volume 0,15 m<sup>3</sup> / 5.3 ft<sup>3</sup>

#### HPL top option

Gross weight 31 kg / 68 lb

Net weight 21 kg / 46 lb

#### Kerlite top option

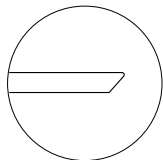
Gross weight 38 kg / 84 lb

Net weight 28 kg / 62 lb

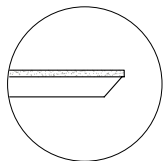
Item dimensions  
(width x depth x height)

100 x 100 x 74 cm  
39.25" x 39.25" x 29.25"

Table top options:



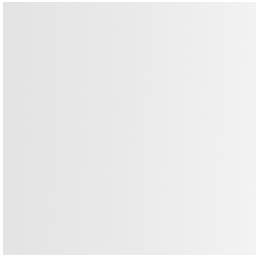
- Trespa® HPL 8 mm/0.31" thick.



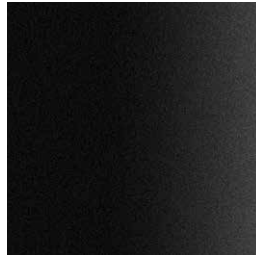
- Kerlite® porcelain 3 mm/0.12" +  
Trespa® HPL 8 mm/0.31" thick.

## Frame / estructura

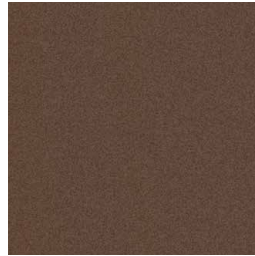
metallic finishes / metales



100 white



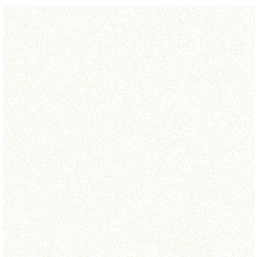
101 black



108 FT oxide  
fine textured

## Top / tapa

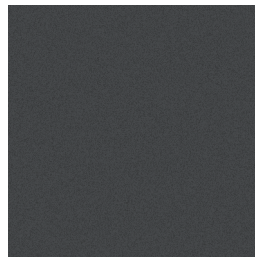
HPL Trespa®



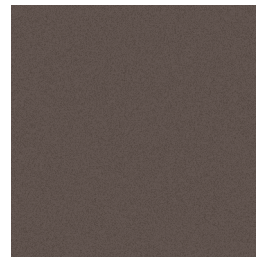
300 white



302 grey



303 anthracite

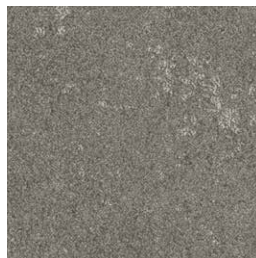


308 natural greige

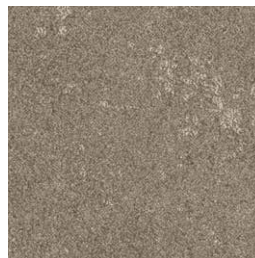
Kerlite®



K5 perle



K6 cendre



K7 noisette

## “Nude” square dining table / mesa cuadrada

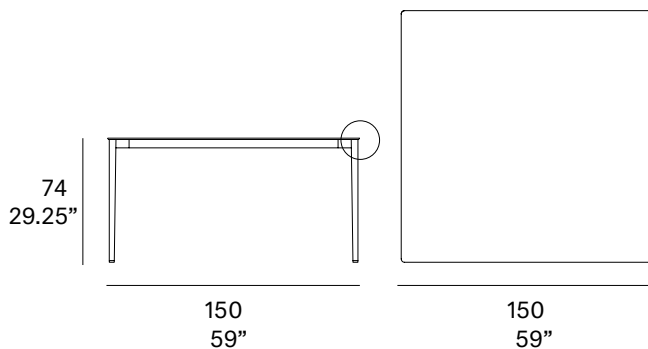
C131

OUT



Structure made of stainless steel tube, finished with polyester powder. Trespa® HPL 8 mm/0.31" tabletop. Delivered unassembled.

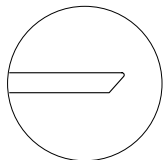
*Estructura fabricada en tubo de acero inoxidable, acabado en pintura de polvo de poliéster. Tablero de HPL Trespa® de 8 mm. Se sirven desmontadas.*



### Shipment details

Qty	1 dining table (1 box)
Volume	0,26 m <sup>3</sup> / 9.2 ft <sup>3</sup>
Gross weight	63 kg / 137 lb
Net weight	43 kg / 93 lb
Item dimensions (width x depth x height)	150 x 150 x 74 cm 59" x 59" x 29.25"

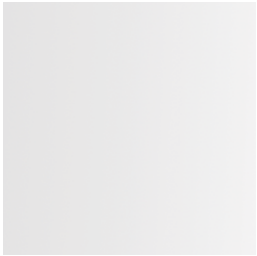
Table top:



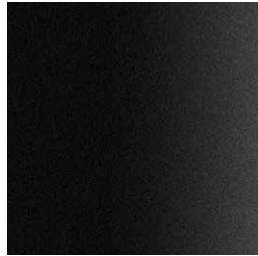
- Trespa® HPL 8 mm/0.31" thick.

## Frame / estructura

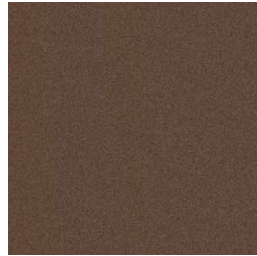
metallic finishes / metales



100 white



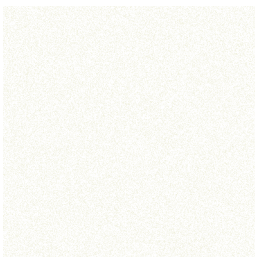
101 black



108 FT oxide  
fine textured

## Top / tapa

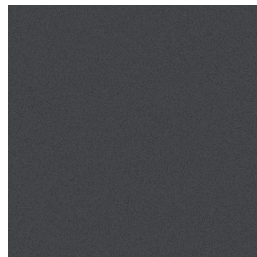
HPL Trespa®



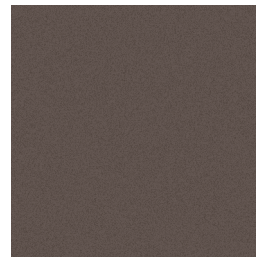
300 white



302 grey



303 anthracite

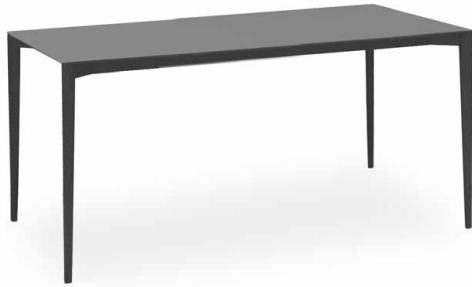


308 natural greige

## “Nude” rectangular dining table / mesa rectangular

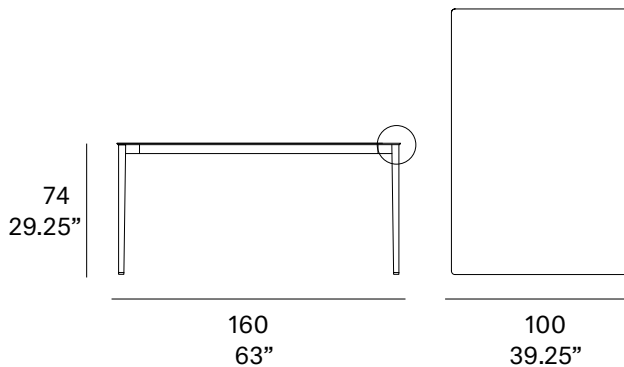
C133

OUT



Structure made of stainless steel tube, finished with polyester powder. Two tabletop options: Trespa® HPL 8 mm/0.31" thick and Kerlite® porcelain. Delivered unassembled.

*Estructura fabricada en tubo de acero inoxidable, acabado en pintura de polvo de poliéster. Dos opciones de tablero: HPL Trespa® de 8 mm y porcelánico Kerlite®. Se sirven desmontadas.*



### Shipment details

Qty 1 dining table (1 box)

Volume 0,20 m<sup>3</sup> / 7 ft<sup>3</sup>

#### HPL top option

Gross weight 37 kg / 82 lb

Net weight 27 kg / 60 lb

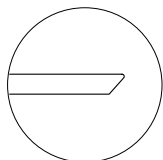
#### Kerlite top option

Gross weight 48 kg / 106 lb

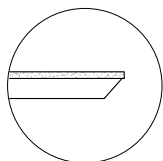
Net weight 38 kg / 84 lb

Item dimensions (width x depth x height) 160 x 100 x 74 cm  
63" x 39.25" x 29.25"

Table top options:



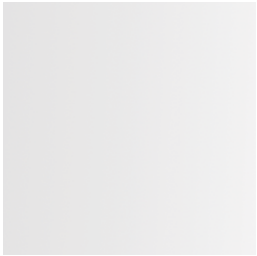
- Trespa® HPL 8 mm/0.31" thick.



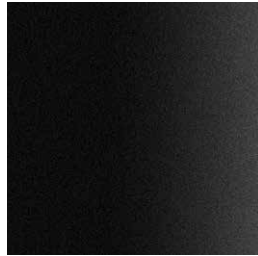
- Kerlite® porcelain 3 mm/0.12" + Trespa® HPL 8 mm/0.31" thick.

## Frame / estructura

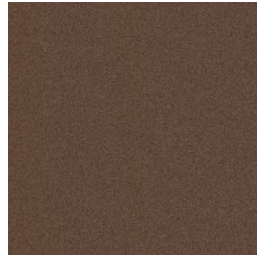
metallic finishes / metales



100 white



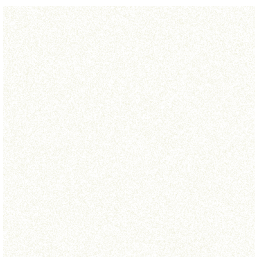
101 black



108 FT oxide  
fine textured

## Top / tapa

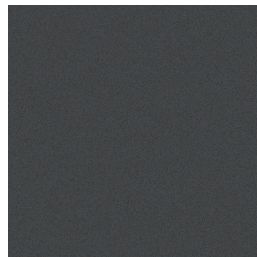
HPL Trespa®



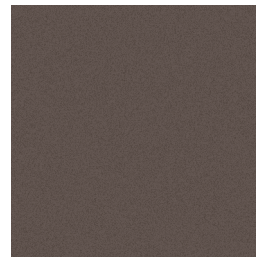
300 white



302 grey



303 anthracite

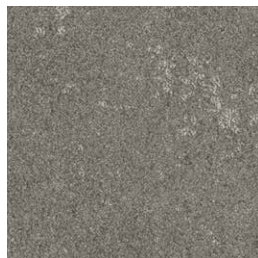


308 natural greige

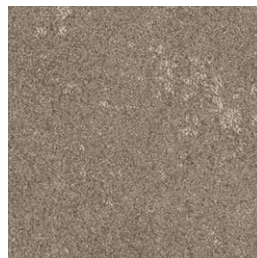
Kerlite®



K5 perle



K6 cendre

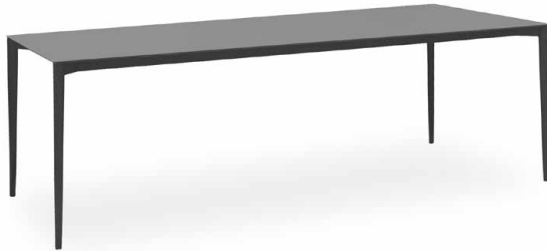


K7 noisette

## “Nude” rectangular dining table / mesa rectangular

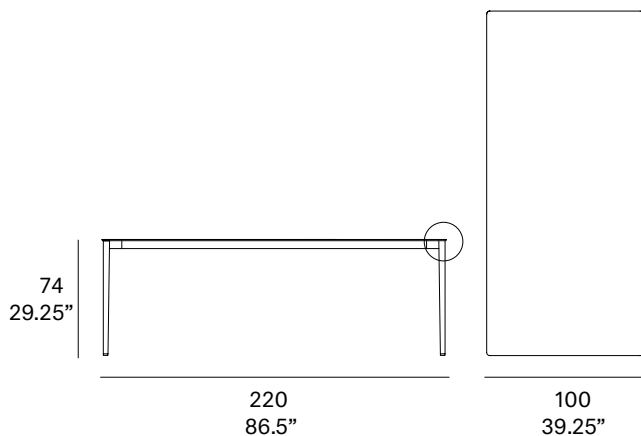
C134

OUT



Structure made of stainless steel tube, finished with polyester powder. Two tabletop options: Trespa® HPL 8 mm/0.31" thick and Kerlite® porcelain. Delivered unassembled.

*Estructura fabricada en tubo de acero inoxidable, acabado en pintura de polvo de poliéster. Dos opciones de tablero: HPL Trespa® de 8 mm y porcelánico Kerlite®. Se sirven desmontadas.*



### Shipment details

Qty 1 dining table (1 box)

Volume 0,26 m<sup>3</sup> / 9.2 ft<sup>3</sup>

#### HPL top option

Gross weight 48 kg / 106 lb

Net weight 38 kg / 84 lb

#### Kerlite top option

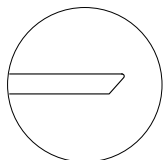
Gross weight 63 kg / 139 lb

Net weight 53 kg / 117 lb

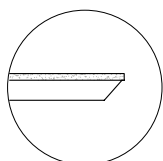
Item dimensions  
(width x depth x height)

220 x 100 x 74 cm  
86.5" x 39.25" x 29.25"

Table top options:



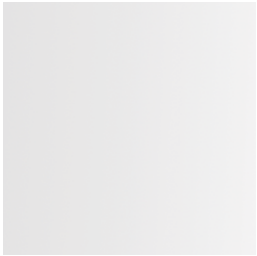
- Trespa® HPL 8 mm/0.31" thick.



- Kerlite® porcelain 3 mm/0.12" +  
Trespa® HPL 8 mm/0.31" thick.

## Frame / estructura

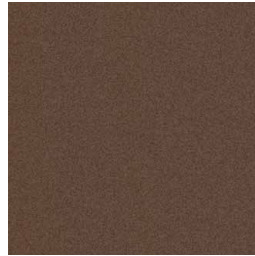
metallic finishes / metales



100 white



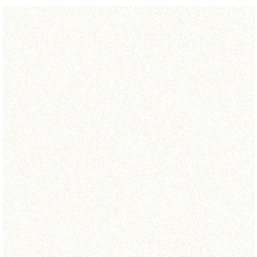
101 black



108 FT oxide  
fine textured

## Top / tapa

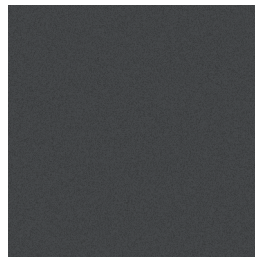
HPL Trespa®



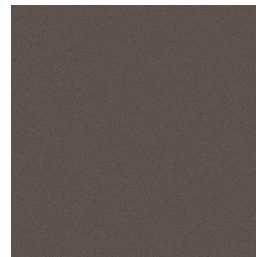
300 white



302 grey



303 anthracite

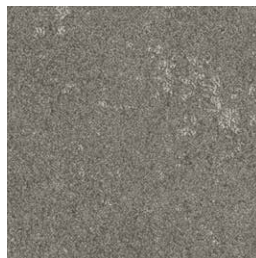


308 natural greige

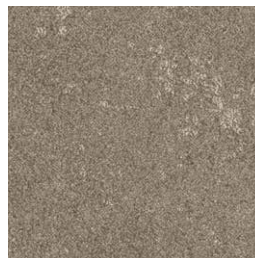
Kerlite®



K5 perle



K6 cendre



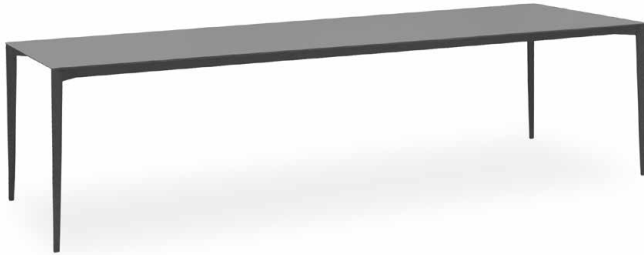
K7 noisette



## “Nude” rectangular dining table / mesa rectangular

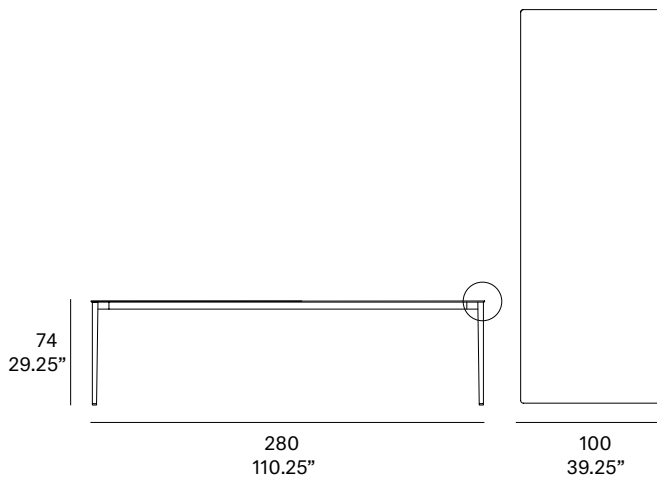
C135

*OUT*



Structure made of stainless steel tube, finished with polyester powder. Two tabletop options: Trespa® HPL 8 mm/0.31" thick and Kerlite® porcelain. Delivered unassembled.

*Estructura fabricada en tubo de acero inoxidable, acabado en pintura de polvo de poliéster. Dos opciones de tablero: HPL Trespa® de 8 mm y porcelánico Kerlite®. Se sirven desmontadas.*



### Shipment details

Qty 1 dining table (1 box)

Volume 0,35 m<sup>3</sup> / 12.4 ft<sup>3</sup>

#### HPL top option

Gross weight 73 kg / 161 lb

Net weight 53 kg / 117 lb

#### Kerlite top option

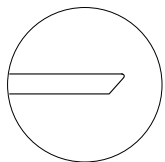
Gross weight 93 kg / 205 lb

Net weight 73 kg / 161 lb

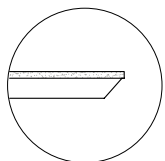
Item dimensions  
(width x depth x height)

280 x 100 x 74 cm  
110.25" x 39.25" x 29.25"

Table top options:



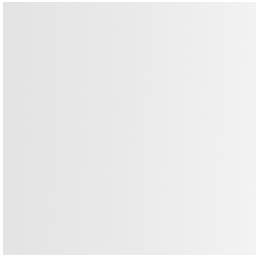
- Trespa® HPL 8 mm/0.31" thick.



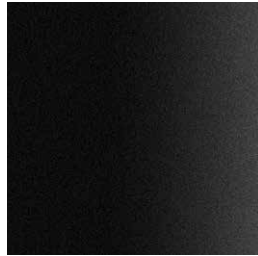
- Kerlite® porcelain 3 mm/0.12" +  
Trespa® HPL 8 mm/0.31" thick.

## Frame / estructura

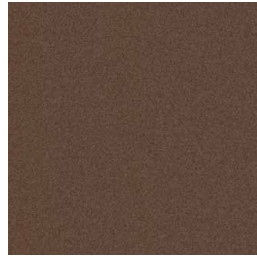
metallic finishes / metales



100 white



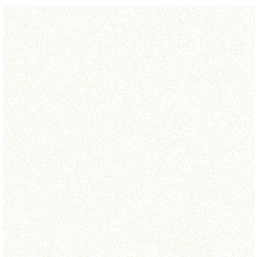
101 black



108 FT oxide  
fine textured

## Top / tapa

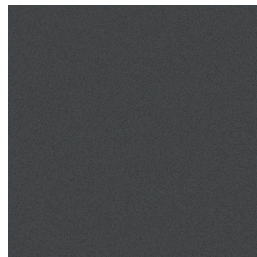
HPL Trespa®



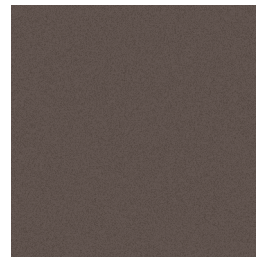
300 white



302 grey



303 anthracite

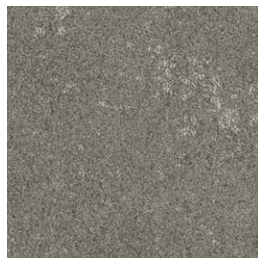


308 natural greige

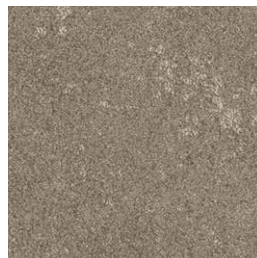
Kerlite®



K5 perle



K6 cendre



K7 noisette

## “Nude” round dining table / mesa redonda

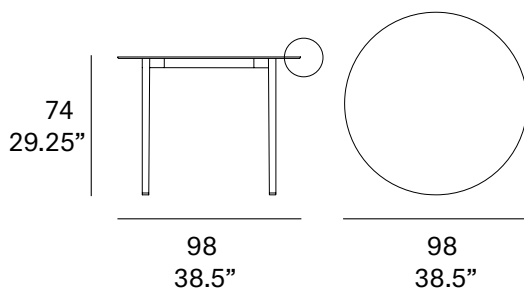
C137

OUT



Structure made of stainless steel tube, finished with polyester powder. Two tabletop options: Trespa® HPL 8 mm/0.31" thick and Kerlite® porcelain. Delivered unassembled.

*Estructura fabricada en tubo de acero inoxidable, acabado en pintura de polvo de poliéster. Dos opciones de tablero: HPL Trespa® de 8 mm y porcelánico Kerlite®. Se sirven desmontadas.*



### Shipment details

Qty 1 dining table (1 box)

Volume 0,15 m<sup>3</sup> / 5.3 ft<sup>3</sup>

#### HPL top option

Gross weight 29 kg / 64 lb

Net weight 19 kg / 42 lb

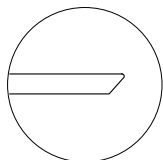
#### Kerlite top option

Gross weight 38 kg / 84 lb

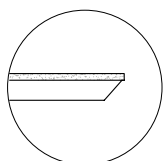
Net weight 28 kg / 62 lb

Item dimensions (width x depth x height) 98 x 98 x 74 cm  
38.5" x 38.5" x 29.25"

Table top options:



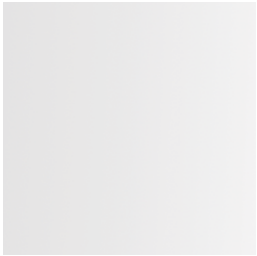
- Trespa® HPL 8 mm/0.31" thick.



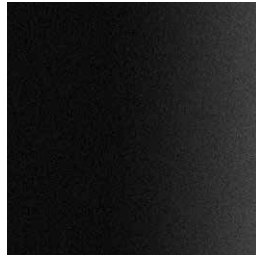
- Kerlite® porcelain 3 mm/0.12" +  
Trespa® HPL 8 mm/0.31" thick.

## Frame / estructura

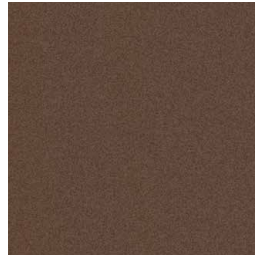
metallic finishes / metales



100 white



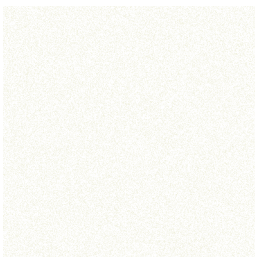
101 black



108 FT oxide  
fine textured

## Top / tapa

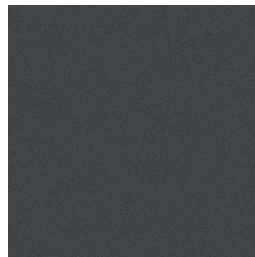
HPL Trespa®



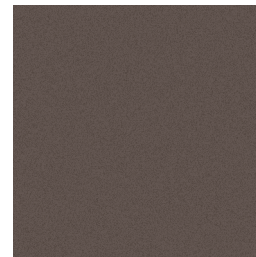
300 white



302 grey



303 anthracite

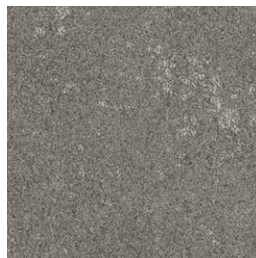


308 natural greige

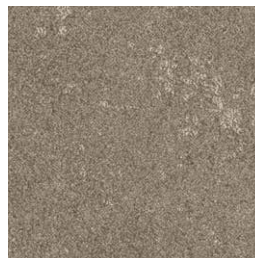
Kerlite®



K5 perle



K6 cendre



K7 noisette

## “Nude” round dining table / mesa redonda

C138

OUT



Structure made of stainless steel tube, finished with polyester powder. Trespa® HPL 8 mm/0.31" tabletop. Delivered unassembled.

*Estructura fabricada en tubo de acero inoxidable, acabado en pintura de polvo de poliéster. Tablero de HPL Trespa® de 8 mm. Se sirven desmontadas.*

### Shipment details

Qty	1 dining table (1 box)
Volume	0,26 m <sup>3</sup> / 9.2 ft <sup>3</sup>
Gross weight	62 kg / 137 lb
Net weight	42 kg / 93 lb

Item dimensions (width x depth x height)	150 x 150 x 74 cm 59" x 59" x 29.25"
---	---

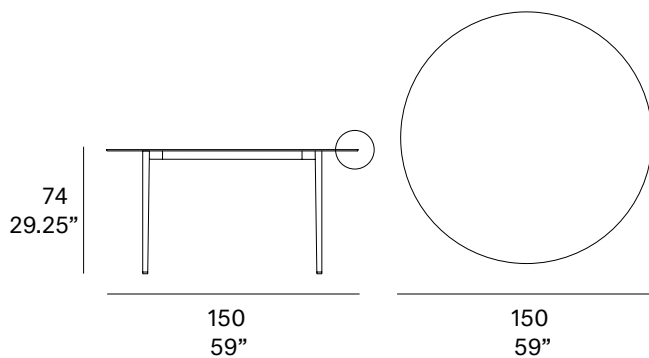
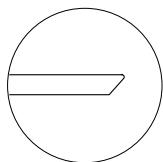


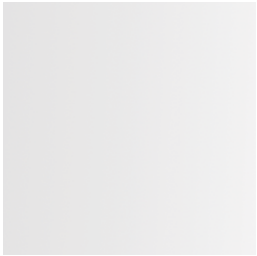
Table top:



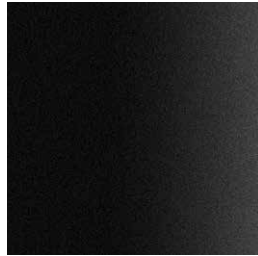
- Trespa® HPL 8 mm/0.31" thick.

## Frame / estructura

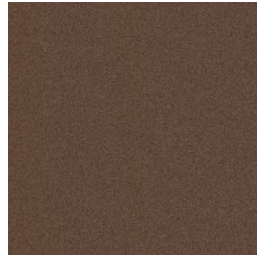
metallic finishes / metales



100 white



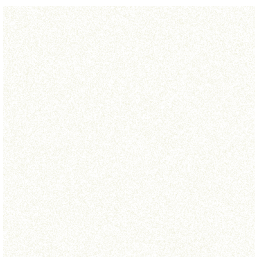
101 black



108 FT oxide  
fine textured

## Top / tapa

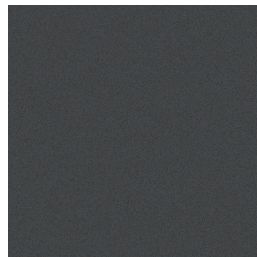
HPL Trespa®



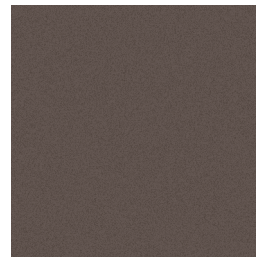
300 white



302 grey



303 anthracite



308 natural greige