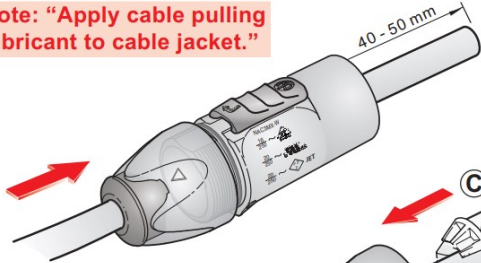


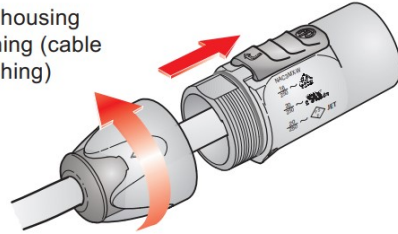
ModuEV/Letterbox Connector Fitting Instructions

A Insert cable into the bushing and housing.

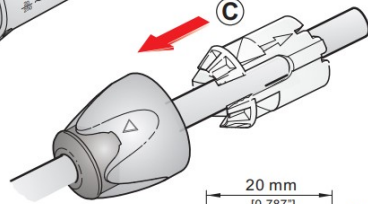
Note: "Apply cable pulling lubricant to cable jacket."



B Separate the housing from the bushing (cable remain in bushing)

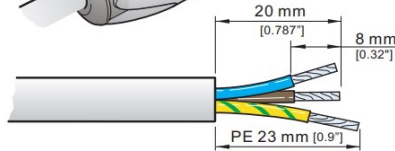


C Place the chuck over the cable.



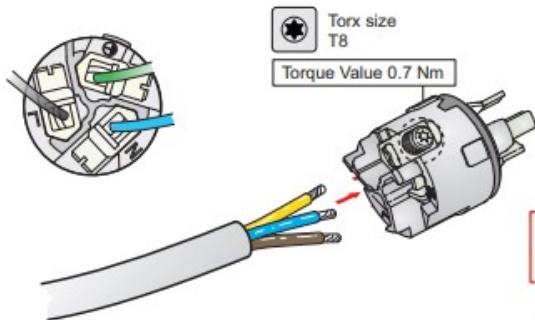
i Recommendation:
Wire Pulling Lubricant - LUB-I/0.95 from 3M™

D Prepare the cable as shown.



VDE (EN 60320-1/EN60320-2-2)

E

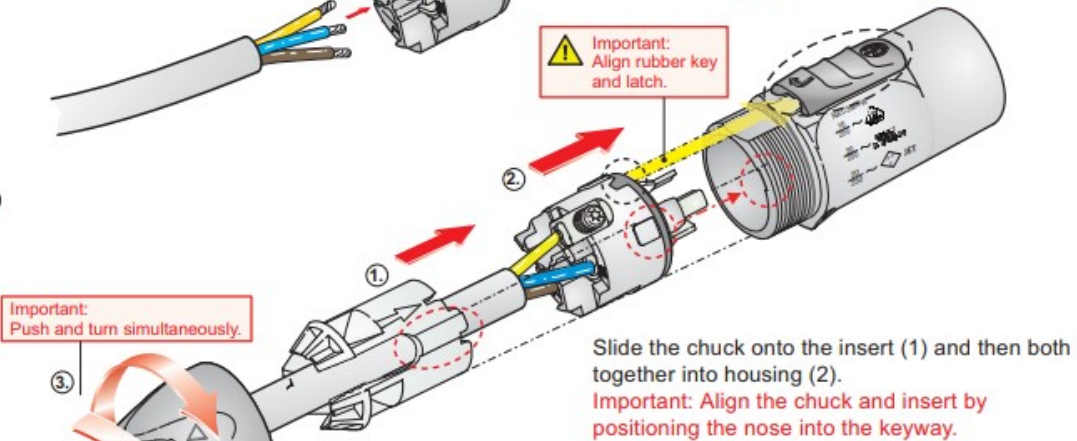


Insert the wires into the terminals and fasten the screw with Torx size T8.

Wiring	VDE
L →	brown
N →	blue
⊥ →	green / yellow

! Important:
Align rubber key and latch.

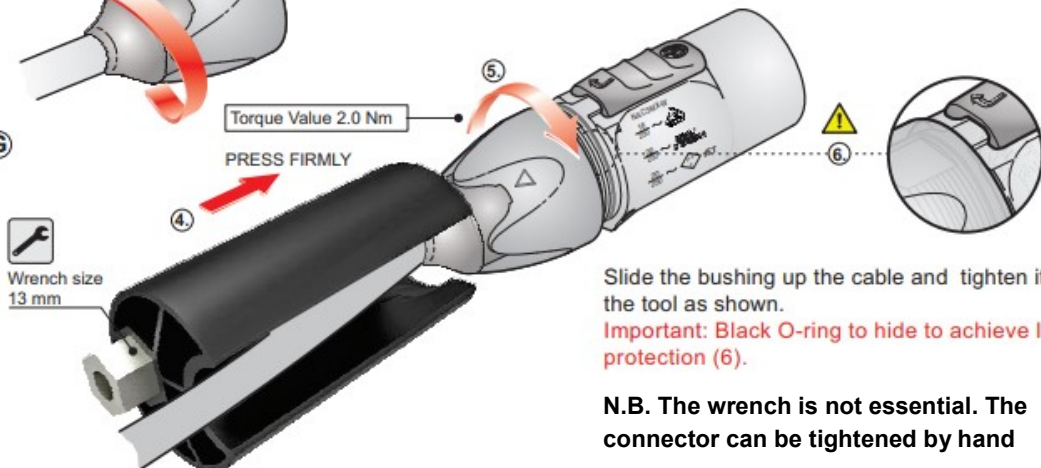
F



Slide the chuck onto the insert (1) and then both together into housing (2).

Important: Align the chuck and insert by positioning the nose into the keyway.

G



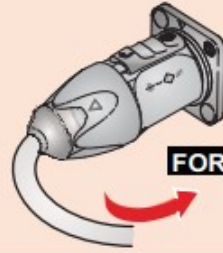
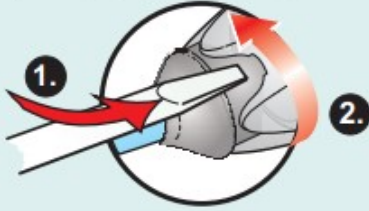
Slide the bushing up the cable and tighten it with the tool as shown.

Important: Black O-ring to hide to achieve IP protection (6).

N.B. The wrench is not essential. The connector can be tightened by hand

FOR DISASSEMBLY - OPEN TWIST LOCK!

- ① Press with screw driver to unlock
- ② Turn bushing 360°.
- ③ Repeat step①+②until bushing is unscrewed.



CAUTION

To ensure protection category, do not expose the connection to bending forces (e.g. do not attach loads to the cable, no free-dangling cable windings etc.).



SAFETY WARNING

For safety and certification reasons the connector must be replaced in case of any broken parts or excessive wear and tear.