

User Manual

Delay Off Plug-in Timer (13A and 16A)

Specification

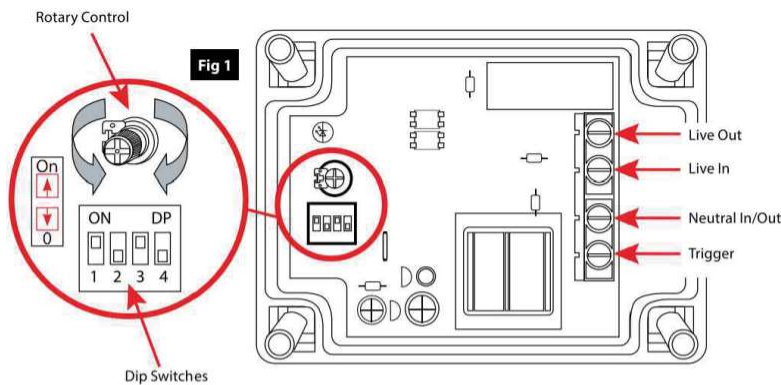
Voltage	220-240v
Switching current	16A Resistive 6A Fluorescent lights 3A Inductive SPST contact
IP rating	Timer enclosure IP66 13A Outdoor socket IP66 16A CEE 60309 connectors - IP44
Time range	2 Seconds to 2 Hours
Back up	Time setting retained indefinitely if no power to unit.

Operating Instructions

- The timer is triggered by touching the large PRESS button, which is in fact simply printed on the enclosure and senses a finger.
- Once triggered, the unit switches the power on.
- The power turns off at the end of the pre-set time, regardless of any additional touches of the button.
- The button can then be touched again to turn the power on and restart the cycle.

Selecting the Time Delay

- Ensure that the power is isolated and remove the front cover.
- Select the time interval required using the DIP switches circled below.
- Use the rotary control to adjust the time within the selected interval.



DIP SWITCH SETTING				TIMER FUNCTION
1	2	3	4	
0	0	1	0	2 seconds to 50 seconds
1	0	1	0	50 seconds to 20 minutes
1	1	1	0	20 minutes to 70 minutes
1	1	0	0	70 minutes to 2 hours
-	-	-	1	Timer function disabled