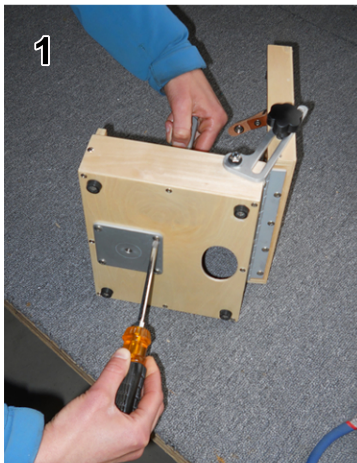
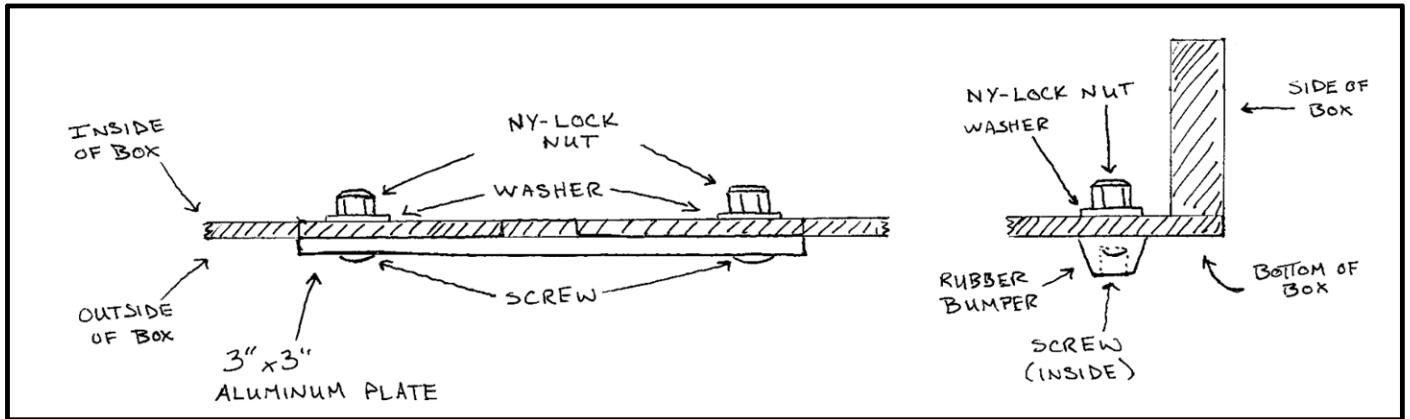
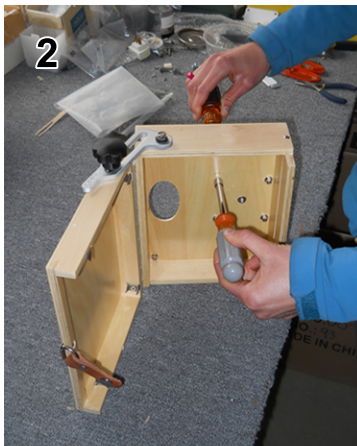
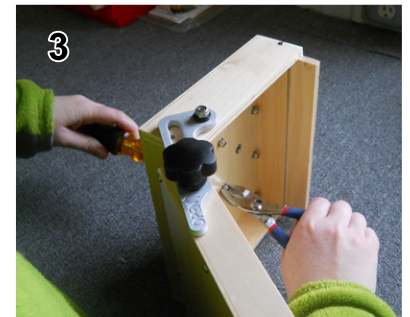


# UNIVERSAL TRIPOD MOUNT KIT INSTRUCTIONS

Tools you will need: (a) philips head screwdriver  
which you will use with either (b) a socket wrench or (c) a pair of pliers.

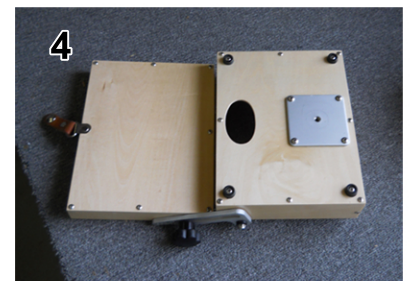


Open your pochade box, remove the sliding palette and stand the box on it's left side. Place the aluminum tripod mount on the outside of the box with its flat surface facing away from the box and line up the four corner holes. Insert the screws from the outside and secure them with the washers and the Nylock nuts on the inside. Because the holes might not line up exactly, we suggest you loosely secure all screws with washers and nuts before completely tightening them (as one might tighten lugnuts when changing a tire). Use your Philips head screwdriver (1) and your hand at first to start threading the Nylock nut and then use your socket wrench (2) or pliers (3) to tighten it the rest of the way.



\*Note: Nylock nuts are a self locking nut and it's normal if they seem to resist tightening.

Bumper feet: push the screw through the bumper foot until the screw is well seated before feeding it through the holes provided in the four corners of the base of the box. Use the same method stated above to secure the screw with the washers and Nylock nuts with your screw driver and socket wrench or pliers.



When you are finished your box should look like the images to the right (4 and 5).

