



COMPOSITION FINDER™ INSTRUCTIONS

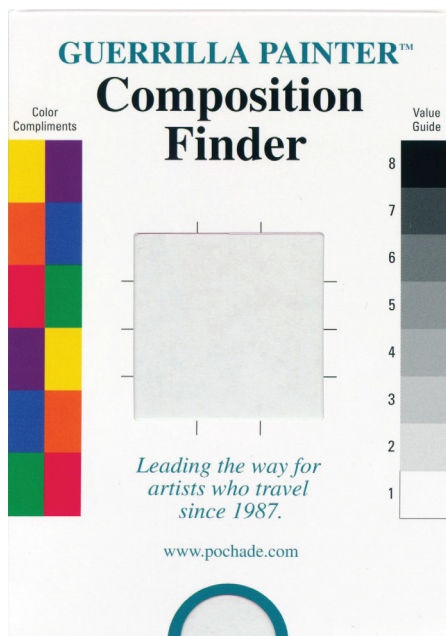
The Guerrilla Painter® Composition Finder™ is designed to help quickly identify composition options, no matter what size or shape the painting. In addition, there are other features to help make important painting decisions.

Adjustment for Painting Size

Indicated on the back of the Composition Finder™ are most of the common sizes of plein air painting supports with lines pointing to the edge of the Composition Finder™ window. Slide the insert down until the top edge of the insert's opening is even with the indicator for the size you plan to paint.

Drawing Aids

The Color Complements and Value Guide on the front and the two rulers on the back of the Composition Finder™ can be used to help judge scale while drawing. The marks on the edge of the adjustable window of the Composition Finder™ can help in locating and drawing complex subjects more accurately.



Color Complements

On the front of the Composition Finder™ is a simple color complement guide, which can be a useful reminder when mixing grays and browns.

The colors are not exactly accurate, particularly the purple complement of yellow. Many painters, however, find this slightly reddish purple more useful in mixtures with yellow than its true complement, which is more bluish.

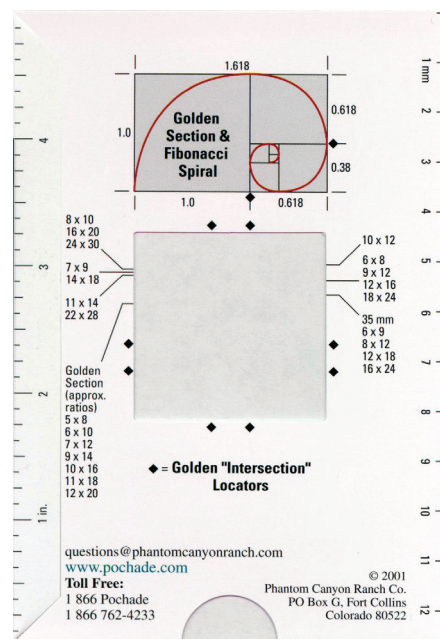
Value Guide

One the front of the Composition Finder™ is a gray scale, which is useful in making value comparisons.

Squinting, which tends to eliminate color, helps when making these value judgments.

The Golden Section and Fibonacci Spiral

Leonardo Pisano Fibonacci was a 13th century mathematician, who is known, among many other things, for the Fibonacci Numbers, which can be used to describe the Golden Section and Fibonacci Spiral. These are closely related mathematically to familiar forms in nature.



The Golden Section describes a rectangle of particularly pleasing proportions, with sides having a ratio of 1 to 1.618. Examples of the use of similar proportions are found throughout art and architecture from the most ancient times to the modern. From the Renaissance on, many painters have used the Golden Section to create compositions and locate focal points within those compositions.

The Golden "Intersection"

On the back of the Composition Finder™ is an illustration of the Golden Section and Fibonacci Spiral. Painting sizes that approximate the Golden Section are indicated.

The Golden "Intersection" (considered by some to be a promising focal point for a composition using the Golden Section) can be found where the horizontal and vertical lines connecting the diamonds intersect.

Trust Your Visual Intuition

Truisms to the contrary, there are no hard and fast rules that govern compositions. Good painters seem to break on or more of "the rules" as often as not. Consider throwing all the rules "out the window" of the Composition Finder™ and just trust your visual intuition.

As you survey your subject through the Composition Finder™, you will see how the visual interest changes as you move it across the scene before you. With a little practice, you will know instinctively when you've found the best composition for you.