

# Watch & Jewellery Tools

March 2022



**PERRIN**

H&W Perrin Co. Ltd.  
E-mail: sales@perrin.ca

90 Thorncliffe Park Drive  
Toronto, On.  
M4H 1N5  
www.Perrin.ca

Phone: 416-422-4600  
1-800-387-5117  
Fax: 416-422-0290  
1-800-741-6139

**#59-0625 Blade Style Case Opener**

For opening snap-back cases. Tempered steel, set in hardwood, non-roll handle. Overall length 5" (120mm)



**#59-0615 Palm Style Case Opener**

Steel blade with knife edge mounted into a comfortable plastic handle. For opening snap back watch case.



**#39-0626 Heavy-Duty Bench Knife**

Heavy-duty bench knife with thick steel blade, securely mounted in a heavy hardwood handle. Overall length 5½" – blade length 1⅝".



**#64-6403R Renata Case Opening Knife**

Pocket size, folding case opening knife. The sturdy spatulated end is used to open most cases. The 2" knife blade is used for cases with very fine case seams, or for cutting off old straps etc. Also includes a tweezer and pick. Made by Victorinox, Switzerland.



**#67-7026 Horotec® Heavy Duty Case Knife**

22mm diameter, anodized aluminum handle with a hardened stainless-steel *replaceable* blade. The large diameter handle makes this knife safer and easier to use. The case knife that keeps on going.



Swiss Made

for replacement blade order #67-7026-B



**2 Jaw Case wrench**

Pocket size, 2 jaw adjustable wrench for opening screw back watch cases. Thumb screw at center adjusts jaws.



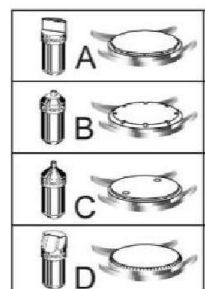
**#59-0610 for Standard Size Watch Cases**

**#59-0610LG for Oversize Watch Cases**

**#59-0790 Jaxa Style Case Wrench**

Adjustable 3 jaw wrench for opening screw back watch cases. Supplied in a wood box with 4 patterns of jaws.

For a full set of replacement jaws for above wrench order #59-0791/1



### **#59-0792 Oversize Jaxa Style Case Wrench**

Economy version of the original Jaxa wrench, but sized up to open the oversize cases presently on the market. Jaws will open from 18mm to 62mm. Supplied with 4 styles of points. Wrench is fully adjustable. Length 170mm



### **#64-2819/8 Oversize Original Jaxa Case Wrench**

Oversized Jaxa 3 jaw case wrench for all threaded cases including the current large cases. This big brother to the original Jaxa wrench will open from 18mm to 62mm. Supplied with 4 styles of points. Back of wrench has a rubber insert to protect surfaces such as glass show cases etc. Wrench is fully adjustable. Total length 175mm



### **#59-0241 Aluminum Watch Case Vise**

Sturdy case vise, constructed of aluminum with adjustable plastic posts with steel center pins. This vise will hold any wrist watch securely while a casing wrench is used to remove the case back. The vise can be held in the hand or set into a bench vise for complete security.



### **#66-520 Metal Watch Case Vise for Oversize Watches**

Larger, heavier version of the regular size case holder. This case vise will accommodate the big oversize cases which are presently on the market, as well as all the regular size cases. Holder can be mounted into your bench vise to maximize stability when using a case wrench to remove the back.



### **#67-9304 Casing cushion**

80mm diameter casing cushion is an easy way to protect watches while they are face down on the bench for service or a battery change. The soft durable surface prevents scratches to the crystal or metal parts.



### **#59-0795A Watch Press for Case Backs**

All metal press with 13 reversible aluminum dies, 13 matching flat stakes and 2 flat nylon dies. This is a basic, must have, tool for anyone opening and closing watch cases. Effective, durable and affordable.



### **#59-0797 Set of 6 Oversize dies for case press**

Set of 6 reversible aluminum dies. This supplemental set, expands the range capability of case press #59-0795A.

Contains: 4 cupped dies covering sizes 43, 45, 46, 50, 54, 56, 57, 65mm plus 2 reversible flat stakes covering sizes 35, 40, 45, 50mm plus 2 mounting posts. Fits press #59-0795A.



### **#59-0798 Watch Press with Nylon Dies**

Press for fitting mineral crystals and installing case backs. This all metal press is supplied with 12 nylon dies. Dies consist of 6 two sided lower dies which support the case and 6 matching top stakes. Dies snap on for quick and easy changes.



### **#59-0798D Set of 12 Replacement Nylon Dies**

Set of 12 nylon replacement dies for watch press 59-798. Contains 6 double sided cupped dies and 6 matching flat dies. Diameters of cupped dies from 21mm to 40mm.



### **#59-0798B Set of Oversize Dies**

Supplementary set of 8 double sided, oversize dies of press #59-0798. These dies cover a size range from 35mm to 57mm. For use on the large and oversize watches currently in style.



### **#67-7130 Horotec® Watch Case Press**

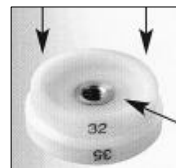
Quality, Swiss made press for closing snap back watch cases. This screw down type press, gives the user the control and sensitivity that lever type presses can lack. Simple, intelligent design coupled with quality construction and materials make this tool a winner. Press uses nylon dies which will not mar cases (dies sold separately). Choose from a variety of die assortments. Dimensions: 110mm x 95mm x 210mm (height measured to upper platform)



### **Delrin Dies for Horotec Watch Presses**

#### **#67-7106 Dies for Closing Snap Back Cases**

Set of 8 reversible dies, plus 1 universal die for snap back cases. Covers size range 17 to 45mm.



#### **#67-7107 Dies for Closing Snap Back Cases**

Set of 5 reversible dies for oversize snap back cases. Covers size range 40 to 50mm.

#### **#67-7108 Dies for Closing Snap Back Cases**

Set of 5 reversible dies for snap back cases. Covers size range 46 to 62mm.



### **#67-7110 Horotec Watch Case Press**

Quality, Swiss made press for closing snap back watch cases. This screw down type press, gives the user the control and sensitivity that lever type presses can lack. Simple, intelligent design coupled with quality construction and materials make this tool a winner. Press uses nylon dies which will not mar cases. Supplied with 6 snap on, Delrin dies. A handy, reduced size version of the #67-7130 Dimensions: 80mm x 60mm x 130mm



**#64-5970 Screwdriver Set on Rotating Stand**

Set of 9 Bergeon Swiss made watchmaking screwdrivers with a rotating stand. Screwdrivers are color coded for easy identification of size. Compartment in center of stand to stores spare blades. blade widths range from 0.60mm to 3.00mm. supplied with spare blades. (replacement blades available)



for made in France version order #52-540

**#67-1218B Set of 5 Screwdrivers**

Set of 5 watchmakers screwdrivers in a plastic pouch. High quality, Swiss made screwdrivers with stainless steel bodies and heads with roller bearings for a smooth action. Covers size range 0.60mm to 1.40mm (replacement blades available).



**#52-0906 Set of 6 Screwdrivers**

Made in France. Ranging in size from 0.60mm to 2.0mm (replacement blades available).



**#67-1218A Set of 9 Screwdrivers in Wood Case**

Set of 9 high quality, Swiss made watchmakers screwdrivers in a custom wood case with hinged lid and latch. Screwdrivers have stainless steel bodies and blades, and the heads have roller bearings for a smooth action. Covers size range 0.60mm to 3.00mm. Comes with a full set of extra blades, and 2 spare set screws. Replacement blades available



**#52-0720 Set of 2 Phillips screwdrivers**

Set of 5 Phillips type screwdrivers for watch work. Screwdrivers feature colour coded handles for quick size identification. Supplied in a plastic pouch. Covers size range 1.50mm to 3.00mm. Made in France.



**Bergeon Watchmakers Screwdriver – individual sizes**

Swiss made, screwdrivers with spare blades. Screwdrivers are colour coded for quick size identification. Bodies are nickel plated brass. Replacement blades available.

Number	Blades size	Color code
#64-30080-E	1.00mm	Black
#64-30080-F	1.20mm	Red
#64-30080-G	1.40mm	Grey

This is the most commonly used range of sizes. Also available in 0.50 - 0.60 - 0.80 – 1.60 - 2.00 – 2.50 – 3.00mm



**#58-2556 Set of 6 Pin Vises**

Set of 6 Pin Vises. Each pin vise is supplied with 2 sizes of collets. Pin vise lengths 7-8-9-10-11-12 cm. This set is an amazing value and a must have for watchmakers and jewellers.



**#57-958 Red Plastic Cell Tweezers**

Non-conductive tweezers for handling watch cells.  
Length 5"  
(for the same tweezer in White, order # 57-957)



**#57-0300 Pattern AA, Economy Tweezers**

Pattern AA general purpose economical tweezers. These are fine tipped tweezers that are perfect for dealing with screws and cell straps during cell changes etc. Length 125mm. Stainless-steel, non-magnetic



**#57-0304 General Purpose Tweezers**

Pattern HH tweezers in nickel Plate.  
Tough, durable tweezers for general store usage.



**#57-01251 Set of 6 Black Epoxy Tweezers**

Set of 6 black epoxy coated stainless, non-magnetic economical quality tweezers including 1 of each of the following patterns: SS, 00, 3C, 2A, 7, 5



**#66-9006 Bracelet Pin Removing Tool**

Plier type tool for removing pins from bracelet links for sizing.  
Adjustable for a full range of bracelet widths from ladies to wide gents.  
Supplied with 2 plungers (0.80mm & 1.00mm)



**Replacement plungers available.**

- #67-10004-060 (0.60mm)
- #67-10004-080 (0.80mm)
- #67-10004-100 (1.00mm)
- #67-10004-120 (1.20mm)
- #67-10004-150 (1.50mm)

**#66-9005-2 Up-grade Plunger System for Pin Removing Tool**

An improved plunger with replaceable tips. Fits tool #66-9006  
Tips are held in with a set screw for quick and easy changes.

**#66-9005-1 Replacement tips for up-graded plunger**

**#66-189820-070 Individual Pin Punch for Bracelet Pins**

Punch for driving out link pins on watch bracelets. Size - 0.70mm  
Spare tips available.

**#66-189820-080 Individual Pin Punch for Bracelet Pins**

Punch for driving out link pins on watch bracelets. Size - 0.80mm  
Spare tips available.

**#66-189820-100 Individual Pin Punch for Bracelet Pins**

Punch for driving out link pins on watch bracelets. Size – 1.00mm  
Spare tips available.



**#66-189820 Set of 3 Pin Punches**

Set contains 3 punches (sizes 0.70mm - 0.80mm – 1.00mm)

Spare tips available.

#66-189821-070

#66-189821-080

#66-189821-100



**#66-189810 Bracelet Pin Removing Tool**

Simple but effective tool for pushing out the pins of watch bracelet links.

Spare tips available (#66-189810-1 pkg of 3 tips)



**#59-0455 Awl Type Pin pusher**

Handy Tool for releasing spring bars on cases with the spring bar hole drilled completely through the lugs.



**#67-10513 Vice for Watch bracelets**

Special vise for clamping watch bracelets when driving out link pins. Very precisely constructed of a tough, metal substitute plastic and has relief slots in base to allow pins to pass through.

Dimensions: 41mm x 34mm x 23mm



for the King size version of the vice order # 67-10519

Dimensions: 47mm x 51mm x 36mm

**#37-536 Multi-face Hammer**

Versatile hammer with two different detachable faces. One side is brass and the other is nylon. Hammer faces are 12mm in diameter and are replaceable. Head weight approx. 2½ oz. Overall length 215mm.



**#37-530 Small Brass Mallet**

Small brass mallet for Knocking out pins etc. Less likely to mar surfaces than a steel hammer. 1 flat face and 1 rounded face. 13mm face diameter – head weight 2 oz.



**#53-30800 Mesh Bracelet Cutter**

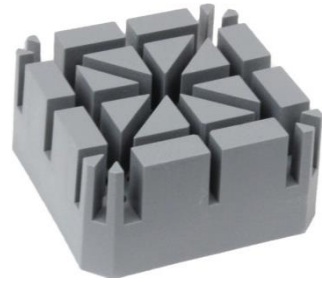
The Mesh Bracelet Cutter 308.00 is 6" L x 4" D and weighs 7 lbs. This beveled-cylinder cutting tool is not only useful for cutting mesh bands, but also, for solder wire and small pieces of sheet metal. The long handle provides maximum cutting leverage. Made by **PEPETOOLS**



**Bracelet Holding Block**

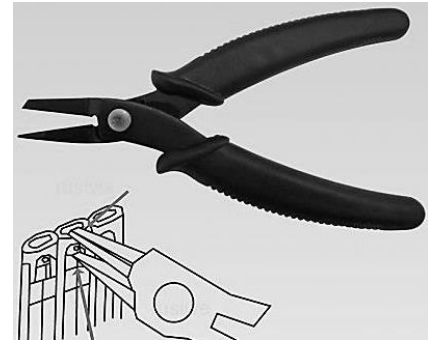
Plastic block with 9 different width slots to hold watch bracelets.  
A simple but indispensable tool for removing bracelet pins.

- #64-6744-P ..... Standard size slots
- #64-6744-P1 ..... X-Wide slots for heavy bracelets
- #64-6744PS ..... Standard slots in a soft plastic block for gold bracelets.
- #64-6744PS-1 ..... X-Wide slots in a soft plastic block for gold bracelets.



**#67-30399 Link Removing Pliers**

Special plier for removing links on bracelets with the slide-out clips.  
1 jaw is wide and flat to brace against the side of the link. The opposing jaw has a narrow tip and is longer for engaging with the clip.



**#64-4657 Bergeon Rubber Dust Blower**

Rubber blower with accelerator nozzle tip. Air inlet valve is at the back end of blower and air from the nozzle moves in one direction (exit only). The blower is an essential tool for watch work. Used to remove dust and particles from the inside of crystals and from watch dials. Also used to help remove debris that may accumulate around the case back before resealing the watch.



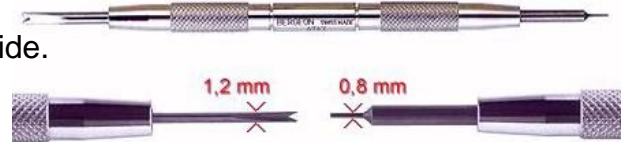
**#64-6767-S Spring Bar Removing & Inserting Tool**

The handle is polished, nickel plated brass.  
The hardened & tempered steel tips, screw into the handle for easy replacements.  
An indispensable tool, for removing and inserting spring bars in watches.  
Overall length 145mm. Regular replacement tips available.



**#64-6767-F Spring Bar Removing & Inserting Tool (fine tip version)**

The same quality tool as the 6767-S...but with finer tips.  
The pin end measures 0.80mm and the fork end is 1.20mm wide.  
This narrower fork-end is much more practical for removing metal bracelets where the cut-out to access the spring bar is too narrow for the traditional size ends.



**Bergeon Watchmakers Loupes**

Number	Magnification	Focal distance
#64-4422-4	2.5X	4 inch
#64-4422-3-5	3X	3.5 inch
#64-4422-3	3.3X	3 inch
#64-4422-2-5	4X	2.5 inch
#64-4422-2	5X	2 inch
#64-4422-1-5	7X	1.5 inch

Quality, Bergeon Watchmakers loupes

Available in a range of magnifications and focal distances.





**OptiSIGHT Magnifying Visor** *Made in USA*

Provides hands-free magnification for more accurate and efficient viewing. The visor tilts up for normal viewing or down for magnification. OptiSIGHT brings work closer and into focus, reducing eyestrain and fatigue. The OptiSIGHT is very light weight and the unique design of the head band allows people with long hair to take the OptiSIGHT on and off with ease and eliminates the "hat-head" look caused by other types of headset magnifiers.



- |                    |  |                  |
|--------------------|--|------------------|
| #29-5301.....Green |  | #29-533.....Gray |
| #29-531.....Tan    |  | #29-534.....Red  |
| #29-532.....Purple |  | #29-535.....Blue |

**#29-568 LED Illuminating Headband Magnifier**

The patented LED Illuminating Headband Magnifier is comfortable to wear and easy to adjust - one size fits all.



- Includes detachable LED light source;
- 3 AAA batteries included.
- Comes with five clearly marked lens plates for a total of 11 levels of magnification
- Single Lens: 1X, 1.5X, 2X, 2.5X, 3.5X
- Double Lens: 3X, 4X, 4.5X, 5.5X, 6X
- Includes lens storage box.

**Donegan USA - Spectacle (eyeglass) Loupes**

The Ultra-light Eyeglass loupe is designed for maximum comfort and utility. Lenses are of high quality, optical-grade materials from precision ground and polished molds. Very lightweight and tough materials provide superior durability. The lens pivots out of the way for normal viewing and easily aligns when magnification is needed. Changeable cams are included to fit eyeglass frames from 1/16" to 1/4" temple width. The eyeglass clamp easily converts from right to left temple mounting. Available in single or double lens combinations with a variety of focal lengths and powers.

Single lens	Magnification
29-5051	10X
29-5052	7X
29-5053	5X
29-5054	4X
29-5055	3X

Double lens	Magnification	Combined Magnification
29-5071	5X - 10X	15X
29-5072	4X - 10X	14X
29-5074	4X - 7X	11X



**#16-1914 Nylon Scratch Brush**

Much less aggressive than the traditional fiberglass scratch brushes. These brushes do not have the harsh cutting action of fiberglass, allowing you to remove debris without etching into the metal underneath. Brush can be advanced by turning the knob at end of brush. Length 117mm (refills available)



**#16-1913 Fiberglass Scratch Brush**

These brushes are the traditional harsh cutting fiberglass, allowing you to remove light rust, and debris. Brush can be advanced by turning the knob at end of brush. Length 117mm (refills available)



**#67-19105 Battery, Impulse & Coil Tester**

Compact analogue tester for watch cells.  
-Tests silver oxide (high drain & low drain) plus 3V lithium cells.  
-Tests for coil continuity using detachable leads.  
-Features a built-in impulse detector.



**#67-19000 Universal Battery Tester**

General use analogue cell tester. Tests 1.5V & 3V watch cells plus AA, AAA, C, D, N, and 9V. Also tests the 12V batteries for lighters and car remotes. Watch cells can be inserted into the side of the unit for a quick "push of the button" test. Other types can be tested using the attached leads. Also features a negative and positive contact spot on the surface of the tester.



**#67-26114 Lint Free Micro-Fiber Cloth**

These soft lint free micro-fiber cloths are perfect for wiping fingerprints from watches and crystals etc. Edges are stitched and the cloth will retain its' softness even after repeated washing.



*Ask us for a  
Battery price list*

**0% mercury**  
trusted by the best

**Swiss made, Renata watch cells.**

All the finest watches leave the factory with Renata cells.

**0% Mercury**

Renata watch cells are now mercury free.

### #59-0985 Watch Makers Tool Kit

#### Contains:

- |                                  |   |
|----------------------------------|---|
| -Case opening knife              | -Fiber glass scratch brush              |
| -Slotted bracelet holding block. | -3 flat screwdrivers                    |
| -Buff stick                      | -silicon waterproofing grease           |
| -Casing cushion                  | -12" x 12" cloth                        |
| -Loupe                           | -Spring bar removing toll               |
| -Ball pein hammer                | -Asst. of spring bars                   |
| -Hand setting tool.              | -Tweezers-brass                         |
| -Adjustable 3 jaw case wrench.   | -Tweezers-plastic                       |
| -pin punch set (.80 & 1.00mm)    | -Tweezers (pattern #2 stainless steel)  |
| -Pin vise                        | - Zippered case with elastic hold downs |
| -Flat nose plier                 | Made in India                           |



### #59-0986 Watch Repair Kit for Jumbo Watches

This kit contains an oversize Jaxa style case opening wrench, a nickelled spring bar tool, a flat head screwdriver, pattern #5 tweezers, eye loupe, oversize case vice and a zippered case. Ideal starter set for dealing with the currently fashionable oversize watches.



### #59-0987 Battery Change & Bracelet Sizing Kit

Kit contains a magnifier with pouch, 2 sizes of flat blade screwdrivers, pattern AA stainless tweezers, a spring bar tool, plastic cell tweezers, blade style case opener, a plier type bracelet pin remover and Jaxa style case opening wrench. Supplied in a handy zippered storage case.



### Stainless Steel, Double Flanged Spring Bar assortments

#### #67-99027 Asst. Double Flange Spring Bars - Ø1.30mm

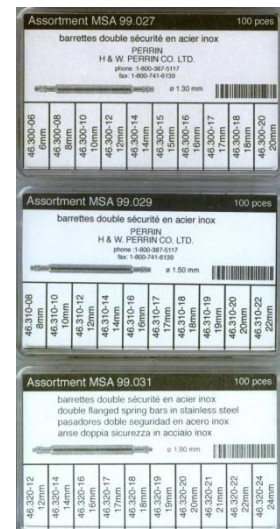
Assortment of stainless steel, double flange spring bars with 1.30mm diameter body. Contains 10 each of 10 sizes, from 6 to 20mm. Refills available.

#### #67-99155 Asst. Double Flange Spring Bars - Ø1.50mm

Assortment of stainless steel, double flange spring bars with 1.50mm diameter body. Contains 10 each of 10 sizes, from 10 to 24mm. Refills available.

#### #67-99031 Asst. Double Flange Spring Bars - Ø1.80mm

Assortment of stainless steel, double flange spring bars with 1.80mm diameter body. Contains 10 each of 10 sizes, from 12 to 24mm. Refills available.



### **#67-99064 Master Assortment of Double Flange Spring Bars**

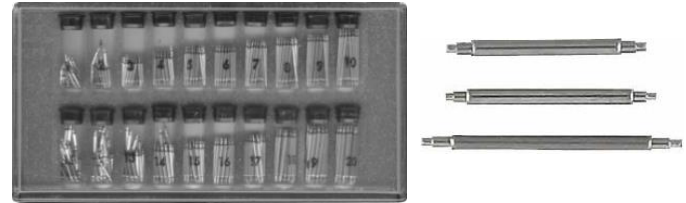
Asst. of stainless steel double Flange (DF) style spring bars. Contains a range of lengths in 3 different body diameters. Each length and thickness is contained in its own box with lift off lid. Each box is marked with dimensions and re-order number.

Contains: 690 pieces total  
6mm to 18mm in diameter 1.30mm  
8–10–12mm to 24mm –in diameter 1.50mm  
8–10–12-14mm to 24mm –in diameter 1.80mm



### **#67-400 Assortment of Double Shoulder Spring Bars**

Assortment of nickel plated double shoulder spring bars. Contains 10 sizes each in 1.30mm and 1.80mm thickness (total 400pcs.) Refills available.



### **#DY-5370 Black Plastic Display Tray**

Black plastic display tray measures 14¾" x 8¼" x 1½"

### **#DY-5371 72 Ring Insert for Display Tray**

Foam insert with black flocked top surface holds 72 rings. (Fits display tray DY-5370)



### **#DY-5372 Insert with 50 containers**

Foam insert with 50 round, clear containers



### **#35-555 Diamond Seller**

Ideal for closing the sale without using expensive stones. Cubic Zirconia mounted on stainless steel arms fold into the handle when not in use. This sales tool has 10 sizes ranging from .10ct to 2carats. Each arm is marked with the carat size and millimeter size of the stone.



### **#35-100 4 Pronged, Silver Tone, Diamond Holding Display Rings**

Spring loaded, 4 pronged rings hold diamonds for customers to view in a realistic style mount. Better illustrates the effect of different stone sizes. **Short Prongs.**



### **#35-101 4 Pronged, Gold Tone, Diamond Holding Display Rings**

Spring loaded, 4 pronged rings hold diamonds for customers to view in a realistic style mount. Better illustrates the effect of different stone sizes. **Short Prongs.**

### **#35-102 4 Pronged, Silver Tone, Diamond Holding Display Rings**

Spring loaded, 4 pronged rings hold diamonds for customers to view in a realistic style mount. Better illustrates the effect of different stone sizes. **Long Prongs.**



### **#35-103 4 Pronged, Gold Tone, Diamond Holding Display Rings**

Spring loaded, 4 pronged rings hold diamonds for customers to view in a realistic style mount. Better illustrates the effect of different stone sizes. **Long Prongs.**

**#29-670 10X Jewellers Loupe**

10X Triplet Magnifiers a triplet lens system for correcting spherical and chromatic aberrations. Eliminates colour degradation and puts every part of the wide field of view in sharp focus. One of the most highly corrected magnifiers available. This magnifier features a black satin finish.



**#29-263 B&L 20X Jewellers Magnifier**

A triple lens system from Bausch & Lomb for correcting spherical and chromatic aberrations. Eliminates color degradation and puts every part of the field of view in sharp focus. One of the most highly corrected magnifiers available. For gemological inspection of stones or viewing girdle inscriptions. Magnification 20X Focal distance 1/2" (this is a **very** small magnifier – lens diameter is 7 mm)



**#29-911 20X Magnifier with LED light**

This pocket size magnifier feature a 21mm lens, offering 20X magnification with a single LED light that automatically comes on when pulled open and shuts off when closed. Measures 2" x 1 1/2" closed and 3 1/4 x 1 1/2" when open. (Batteries included)



**#29-4650 GEMORO 10X LED Light Loupe 21mm**

This pocket size magnifier features a 21mm lens, offering 10X magnification with a single LED light that is activated by the push of a button. Powered by 3 #389 batteries (included). Comes with a plastic carrying case, and a screwdriver



**#35-5901 Multi-Sizer**

A simple finger gauge which allows fingers to be measured behind the knuckle. Accurately measures to half sizes.



**#57-531 Diamond Tweezers – Fine Tips**

Matte finish, stainless steel diamond tweezers with fine serrated tips. Tweezers have a light, sensitive action. Length 6 1/4"



**#57-532 Diamond Tweezers – Medium Tips**

Matte finish, stainless steel diamond tweezers with medium serrated tips. Tweezers have a light, sensitive action. Length 6 1/4"

**#35-0187 Wide Finger Gauges**

Set of 6mm wide, flat finger gauges. Covers sizes 1 through 15 in half sizes.



**#35-260 Regular Width Flat Finger Gauges**

Set of standard width, flat finger gauges. Covers sizes 1 through 15 in half sizes.



### **#12-265500 Flat Anvil Planishing Set**

A very well designed, quality Planishing set made in Europe by **PEPETOOLS**.

12 stakes with cast-iron base and work holder are nestled in a wood base for convenient storage. Used for forming large shapes



### **#12-265500A Domed Anvil Planishing Set**

Yet another quality tool from **PEPETOOLS**.

12 stakes with cast-iron base and work holder are nestled in a wood base for convenient storage. Used for forming large shapes.



### **#12-319P Steel Bench Block 4" X 4" x 3/4"**

By **PEPETOOLS USA** – Provides a solid base for work while flattening, straightening or designing. Rockwell hardness 46-50  
Ground smooth, made of high-quality tool steel



### **#25-14405 Premium 14pc Disc Cutter Set**

**Pepetools** Premium Disc Cutter Kit is newly improved version of the world's best-selling disc cutter. Engineered to the industries tightest tolerances, this product is built to last a lifetime. Precision machined from hardened steel, each plate is ground to perfection. Features include:

Punch clearing design – Allows the punch to completely clear the die. Punches with 7° cutting angles. Applies a shearing action that reduces cutting stresses and produces much cleaner cutouts.

Material hold down feature - Restricting the movement of the material being cut, by firmly holding it in-place. The easy open & close height adjusting knob, is low profile and will not interfere with your work, when using mallet, hammer or a hydraulic press.

Organizing base - Machined from HDPE to maintain a durable finish.

Laser engraved for easy punch identification.

Sizes: Laser Engraved: On disc cutter in MM & IN Inches: (1/8", 3/16", 1/4", 5/16", 3/8", 7/16", 1/2", 9/16", 5/8", 11/16", 3/4", 13/16", 7/8" & 1") Metric: (3mm, 4.75mm, 6.35mm, 8mm, 9.5mm, 11mm, 12.7mm, 14.3mm, 16mm, 17mm, 19mm, 20.6mm, 22mm & 25mm)

Materials that can be cut; gold, rose gold, platinum, silver, sterling silver, brass, copper, and many more non ferrous materials. Please anneal material before use.



**#25-228500 Ambassador Dapping  
Punch and Cutter Set by PEPETOOLS**

62-piece set includes: 30 dapping punches, 22-piece set of cutters, 5 piece set of ID punches, 2" x 2" dapping die, 2 1/2" x 2 1/2" die, 27 depressions die, 1 designers block - all nestled in a wooden base with the size and or numbers identifying each tool. This comprehensive assembly of forming dies and daps allows the craftsman a wide range of shapes and sizes.



**#48-18600 Ring Shank Bending Tool**

**Pepetools** Ring Shank Bending Tool is constructed from high grade materials and expertly machined in the USA. The lightweight aluminum body and precision shank combine to form one of the most versatile and durable jewelry tools available today!

Featured improvements over its predecessor:  
Machined from & powder coated body  
Dies and post machined from solid steel, then hardened 40-44 HRC  
Self Lubricating O-Lite bushings  
Easy & Minimal maintenance with grease button  
Mount to workbench with included hardware  
Thick, rigid handle for additional torque  
Includes: One hardened steel die, heavy duty mount



**#48-30100 Superior Ring Bending Tool**

This **Pepetools** strong, versatile ring bending tool out performs all other bending tools. The base and handle performs at a high level of torque while allowing the user to exert less resistance in bending metals.

Matching outer dies included!  
HDPE Precision Machined Organizing Base  
16 piece set of precision matching Post & Dies  
Machined from solid steel and then hardened to 45-50 HRC. After hardening, each steel post and die is nickel plated for a lifetime of corrosion free use.  
Round: 12mm, 14mm, 16mm, 18mm, 20mm, and 22mm  
Post: 60deg and 90deg  
24mm shank for increased durability

\*When using this product it is important to use material that is dead soft and under 1mm in thickness. Proper maintenance is a breeze, light oil on the moving parts is all that's necessary.



**#43-30700 Jump Ring Maker 2 - made in U.S.A by PEPETOOLS**

The World's Best-Selling Jump Ring Maker!

Newly Redesigned & Better Than Ever

Features:

HDPE machined organizing base.

Precision machined cutting box, hand-piece holder, mandrels, mandrel base, and more!

20 Mandrels 2.5, 3, 3.5, 4, 4.5, 5, 5.5, 6, 6.5, 7, 7.5, 8, 8.5, 9, 9.5, 10, 10.5, 11, 11.5, 12mm.

Stainless steel blade arbor. Use only with Freedom #30 handpiece

Includes PepeLube and PePETools 1 1/4" Blade **Not to be used with stainless steel or nickel steel**



**#35-0192P Aluminum Ring Mandrel with Groove**

Machined from aircraft grade aluminum, harden anodized finish - this mandrel is the absolute market leader when it comes to quality, precision, and sizing consistency.

US Sizes 1-16 with groove

Aircraft quality aluminum, military grade hard anodization

**PEPETOOLS USA**



**#35-0193P Aluminum Ring Mandrel without Groove**

Machined from aircraft grade aluminum, harden anodized finish - this mandrel is the absolute market leader when it comes to quality, precision, and sizing consistency.

Part of the Gold Standard series which includes the 35-2611 finger sizer. US Sizes 1-16 without groove.

Aircraft quality aluminum, military grade hard anodization

Gold Standard **PEPETOOLS USA**



**#35-2611 Finger Ring Sizer – Gold Standard**

**PePETools** Gold Standard Ring Sizer

Matches perfectly with entire Gold Standard line

35-0192P, 35-0193P, 43-076P, 43-077P

US Sizes 1-16 with 1/2 size increments

Polished and plated high carbon steel

Individually inspected with precise measuring equipment for accuracy.

Comes in beautiful clear acrylic case



**#43-031P Bezel Mandrel – Triangle**

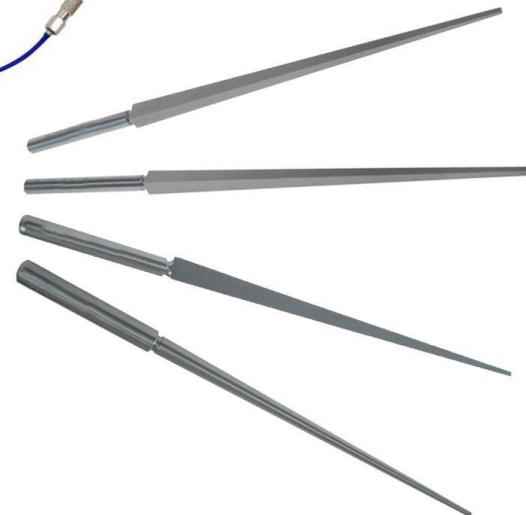
**#43-033P Bezel Mandrel – Rectangle**

**#43-036P Bezel Mandrel – Round**

**#43-038P Bezel Mandrel – Square**

Made by **PePETools**. Perfect for forming round, square, triangle and rectangle bezel settings.

Can be used to set stones. Used for fabricating round catches, jump rings and many other items that require small bezels. This mandrel has an excellent smooth surface, one that you will enjoy using.





**#43-076P Steel Mandrel - Gold Standard – BY PEPETOOLS**

Machined from high carbon, hardened steel and polished to perfection this mandrel is the absolute market leader when it comes to quality, precision, and sizing consistency. Part of the Gold Standard series which includes the 35-2611 finger sizer. US Sizes 1-16. Hardened and polished steel. No Groove. Gold Standard



**#43-077P Steel Mandrel with Groove - Gold Standard – BY PEPETOOLS**

Machined from high carbon, hardened steel and polished to perfection this mandrel is the absolute market leader when it comes to quality, precision, and sizing consistency. Part of the Gold Standard series which includes the 35-2611 finger sizer. US Sizes 1-16. Hardened and polished steel. Grooved. Gold Standard



**#43-079 Finger Shaped Ring Mandrel – BY PEPETOOLS**

Modern Square shape, used for square ring shanks  
Graduated from 12mm to 24mm  
Used for holding, shaping and straightening rings  
Finger shaped - rounded corners offer a more natural, comfortable fit. Machined from solid steel



**#43-079GR Finger Shaped Ring Mandrel – BY PEPETOOLS**

As above 43-079, but engraved with US finger sizes 1-16

**#43-080RC Unmarked Round Ring Mandrel – BY PEPETOOLS**

Round mandrel used for holding, shaping and forming and straightening rings. Graduated from 12mm to 24mm. This mandrel is hardened to 62-62 RC which provides superior performance when forming and sizing as well as longer life for the tool. This mandrel has red details to set it apart from our normal hardness mandrels.



**#43-081P Forming Mandrel - Rectangular**

**#43-082P Forming Mandrel – Octagon**

used for holding, shaping and forming and straightening.  
Made by PEPETOOLS.



**#43-12500 Large Ring Mandrels 20 - 26**

**#43-12601 Large Ring Mandrels 16 - 20**

Laser engraved ring sizes in 1/4" size increments. These giant round steel mandrels are used for holding, shaping and straightening rings, hoop earrings and small bracelets



### **#54-77300 Set of 3 Titanium Soldering Pics with coloured handles**

Set of three Red / Gold / Blue  
Overall length: 6 1/4" Tip: 1 5/8"  
Titanium machined tip - will last  
Fine tip to collect the exact amount of  
solder for a precise application. Grooved  
aluminum handle, designed to quickly  
transfer heat away from operator  
made by **Pepetools USA**



### **#53-9196 - 6" Designer Series Guillotine Shear**

Proudly manufactured in the USA, this unit is a versatile workhorse at an excellent value. Thanks to innovative features and an intuitive design, this shear is a pleasure to use. Unlike other horizontal style units available on the market, the Pepetools 6" Shear features a perpendicular handle that allows the operator to maintain full control of the cutting process. In addition to the perpendicular handle, the unit also features a large 10" x 7" feeder table that doubles as a miter box. The miter box is laser engraved with lines to indicate when the included straight edge is at 0°, 15°, 30°, or 45°. The blades are the heart of the machine, 6.25" in length allowing full 6" sheets to be cut. Each blade is manufactured from high grade tool steel, afterwards it is heat treated to 45-50HRC. Heat treatment is necessary to harden the material, ensuring a lifetime of use. The stationary blade is sharpened to correspond with the compound angle ground into the moving blade. Our proprietary method produces a set of blades that are good for up to 10,000 cuts. On the receiving side of the unit there is a material stop. This stop can be adjusted to cut from as little as 1MM all the way up to 6" (152MM). The stop can be adjusted to ensure repeated cuts of consistent length.



### **#28-18720 90mm Combination Ultra Mill**

Gear ratio 4:1  
Roller width 90 mm  
Roller diameter 42.6  
Maximum opening 5 mm  
Flat area (+/- 0.01mm) 90mm  
Square wire (+/- 0.01mm): 1.0, 2.0, 3.0, 4.0  
Ring shank - half round ellipsis: 2.5 x 1.3 x 1.25; 4 x 1.5  
Capable of producing metal foil as thin as .001"  
All models equipped with 4:1 reduction gear box  
Custom designed heavy-duty packaging  
Precision hobbed gears from solid steel - no casted gears  
High strength housing

Custom designed maintenance free bronze bushings. Induction hardened in strategic areas to 65HRC hardness. Polished and machined rolls to achieve a mirror finish. PEPETOOLS utilizes a unique hardening procedure which gives superior rollers that will perform beautifully. The rollers are made from a high-quality carbon steel alloy that offers excellent wear resistance and the outer 3mm of the rolls are hardened to 65 HRC for superior deformation resistance.



## **#28-18920A 130mm Combination Ultra Mill with Ductile Frame**

Gear ratio 4:1

Roller width - 130mm

Roller diameter - 65mm

Maximum opening - 5mm

Flat area (+/- 0.01mm) - 66mm

Square wire (+/- 0.01mm):

1.0, 2.0, 3.0, 4.0, 4.5, 5.0, 5.5, 6.0, 6.5

Ring shank - half round ellipsis: 2.5 x 1.3 x 1.25; 4 x 1.5

Capable of producing metal foil as thin as .001"

All models equipped with 4:1 reduction gear box

Custom designed heavy-duty packaging

Precision hobbed gears from solid steel - no casted gears

High strength housing

Custom designed maintenance free bronze bushings

Induction hardened in strategic areas to 65HRC hardness

Polished and machined rolls to achieve a mirror finish

PEPETOOLS utilizes a unique hardening procedure which gives superior rollers that will perform beautifully. The rollers are made from a high-quality carbon steel alloy that offers excellent wear resistance and the outer 3mm of the rolls are hardened to 65 HRC for superior deformation resistance.



## **#37-700 Rawhide Mallet**

Finest quality rawhide embedded in shellac for added durability.

Mounted on hardwood handle. Will not mar during ring work.

Face diameter 1" – head length 2 1/8" – head weight 2 oz.



## **#37-112 Economical Ball Peen Hammer**

General use hammer with one flat end and one round end mounted on a hardwood handle.

Head weight approx. 2oz



## **Slimline Plier and Cutter Series**

These are lightweight and sized for small to miniature work. These are precision pliers and nippers with box joints to eliminate side play and maintain alignment of jaws even under stress. Made of brushed finish stainless steel, with leaf spring and comfortable blue PVC covered handles.

### **#46-052-P flat nose pliers, 5" overall length**

– smooth jaws taper to 3/16" at tips

– jaw length 1"

### **#46-054-P round nose pliers, 5" overall length**

– smooth jaws taper to 3/64" at tips

– jaw length 15/16"

### **#46-056-P chain nose pliers, 5" overall length**

– smooth jaws taper to 1/32" at tips

- jaw edges are beveled

– jaw length 1"



**#46-058-P** end cutters 4 3/4" overall length  
- semi-flush cut  
- cut length 11/16"



**#46-059** diagonal cutters with pointed end  
4 3/4" overall length  
- semi-flush cut  
- cut length 9/16"



**#46-062-P** oblique cutters with pointed end  
4 1/2" overall length  
- semi-flush cut  
- cut length 5/8"



**#46-068-P**  
5 piece set of pliers and cutters  
in a vinyl carrying pouch including the  
following numbers described above:  
46-052-P, 46-054-P, 46-056-P, 46-062-P, 46-059



### Perrin Plier and Cutter Series

These are mediumweight and sized for small to miniature work. These are precision pliers and nippers with box joints to eliminate side play and maintain alignment of jaws even under stress. Made of brushed finish stainless steel, with comfortable yellow PVC covered handles.

**#46-102-P** flat nose pliers 5-1/8" overall length  
- smooth jaws taper to 1/4" at tips  
- jaw length 1"



**#46-104-P** round nose pliers 5" overall length  
- smooth jaws taper to 3/64" at tips  
- jaw length 13/16"



**#46-106-P** chain nose pliers 5" overall length  
- smooth jaws taper to 1/16" at tips  
- jaw edges are beveled - jaw length 1"



**#46-108-P** chain nose pliers 5 1/4" overall length  
- serrated jaws taper to 1/16" at tips  
- jaw length 1"



**#46-110-P long chain nose pliers 5 7/8" overall length**

- smooth jaws taper to 1/16" at tips
- jaw edges are beveled
- jaw length 1 1/2"



**#46-112-P long chain nose pliers 5 7/8" overall length**

- serrated jaws taper to 1/16" at tips
- jaw length 1 1/2"



**#46-114-P combination flat and 1/2 round pliers 5" overall length**

- jaw width 3/16"



**#46-120-P end cutter – regular edge 5" overall length**

- cut length 3/4"



**#46-126-P side cutter regular edge 5-1/4" overall length**

- cut length 5/8"



**#46-132- P**

5 piece set of pliers and cutters in a vinyl carrying pouch including the following numbers described above:

46-102-P, 46-104-P, 46-106-P, 46-120-P, 46-126-P

**#46-512 parallel action light flat nose pliers**

- 5" overall length
- smooth jaws without "V" slot
- maximum opening 3/8"



**#46-0741 Acculoop Plier for making perfect loops every time. 6 1/2" overall length – one jaw tapers from 1.8mm to 5.3mm, the other jaw tapers from 4.0mm to 8.5mm. Plier has markings for 2, 3, 4, 5, 6, 7, and 8mm rings. Has return springs in handles.**



### **#68-15417 POWER MAX SEMI-FLUSH CUTTER**

Ergonomic compound semi-flush cutter that offers the finest in compound leverage construction at an affordable price. Leverage combined with an induction-hardened, high-grade steel jaw allows for extra close cutting. The handles are shaped to be ergonomically efficient and to prevent fatigue and possible injuries which can sometimes accompany hours of cutting. Cuts up to 11 gauge (2.3mm) soft wire or 1.8mm hard wire.

Great for thicker copper. Length 6-1/2" (165mm).



### **#48-180 Ring Cutter (our most popular model)**

Lightweight, nickel plated ring cutter with a knurled non-slip handle. Small 20mm blade allows user to cut the ring with minimal intrusion on a possibly swollen finger.

Made in France. Overall length 4¾".



**#48-192** Replacement steel blade.

**#48-191** Replacement diamond blade



### **#48-02430 Economic Ring Cutter**

This strong, yet lightweight cutter has box joint construction and is completely enclosed. Chrome plated brass with comfort handle. Blade diameter 20mm. (replacement blade #48-02431)



### **#48-193 Stainless Steel Ring Cutter**

Plier type design and large key make this cutter easy to use. Stainless steel construction with 30mm blade. (replacement blade #48-194)



### **#48-220 Beaver Ring Cutter**

Features a molded, plastic comfort grip handle. Cutting pressure is controlled by thumb lever, which provides more sensitivity. Small 19mm diameter blade allows user to cut the ring with minimal intrusion on a possibly swollen finger. (replacement blade #48-224) Made in USA (HSS blade #48-225 also available)



### **#48-0610 Electric Ring Cutter**

In an emergency, speed, safety and comfort are essential. Cuts rings in less than 10 seconds, without heat or discomfort. High quality, powerful cordless motor comes with a recharging unit. Since it is cordless you can take it anywhere, making it ideal in emergencies or visits to the seniors home etc. Chrome blade and drive assembly can be sterilized. 3-year warranty on cutting unit (except blade) Made in USA. (replacement blades #48-0611 pkg. of 2)



# Gem Testing Equipment

## #56-0770 GemOro Testerosa Diamond & Moissanite Tester - New 4<sup>th</sup> version tester

- Identifies, detects and separates diamond from CZ, moissanite and white sapphire
- Sleek ergonomic shape comfortably rests in and on your hand when held
- LED stone illumination and UV fluorescence detection
- Precision retractable probe-tip with enhanced durability
- Indestructible polycarbonate housing with molded rubber base for increased impact resistance if dropped
- Fast warm-up time
- Metal alert warning feature informs you if the setting is touched.
- Auto-off function if accidentally left on preserves battery life.
- Powered by micro-USB or with its included 3 AAA rechargeable NiMH batteries
- User programmable talking voice alert in 9 languages: English, German, Italian, Spanish, French, Russian, Mandarin Chinese, Japanese, Arabic or ringtone sounds
- Glowing light bar/probe tip cone for quick stone identification **GREEN** = Diamond, **BLUE** = Moissanite, **PINK** = Sapphire and **RED** = Metal Alert
- Unprecedented **10-YEAR PROBE TIP WARRANTY**
- Lifetime Limited Replacement Warranty on the tester



### INCLUDES:

Low-profile GEMORO Ultra Dock 3 charging station, adjustable GEMORO Test Stone Magnifier attachment, loose stone holder, multi voltage 100V-240V AC adapter with micro-USB power cord and a carbon-fiber style carrying case.

## #56-0776 GemOro Ultratester 3+ Diamond & Moissanite Tester

The newest 3rd generation tester design is even sleeker and more ergonomic and they have even better testing sensitivity than before. Known for their accuracy and reliability, GemOro sets the standard for protection against diamond simulant fraud!

- Identifies, detects and separates diamond from CZ, moissanite (including the new most difficult F1 moissanite) and white sapphire
- Features **NEW EXCLUSIVE UV-F1 MOISSANITE IDENTIFICATION TECHNOLOGY™** capable of detecting the widest range of the electrically conductive moissanite, including the new super-low electrically conductive Forever One moissanite
- Sleek **PATENTED** ergonomic shape comfortably rests in and on your hand when held
- Intuitive **PATENTED** finger grip pads for increased user-friendliness and ease of use
- LED stone illumination and UV fluorescence detection
- Precision retractable probe-tip with enhanced durability
- Virtually indestructible ABS housing
- Fast warm-up time
- Unique beep tones & **PATENTED** glowing probe tip and light pipe indication: **GREEN** = Diamond, **BLUE** = Moissanite, **PINK** = Sapphire and **RED** = Metal Alert
- Includes a GemOro protective ballistic nylon carrying case, aluminum loose stone holder, GemOro Test Stone Cloth, as well as (3) user-replaceable AAA NiMH rechargeable batteries, a universal multi-voltage 100V-240V AC adapter / charger cube with premium micro-USB cord
- **EXCLUSIVE Two-Year Probe Tip Warranty (NOTE: The entire unit will be replaced in the event of tip damage)**
- Unprecedented Lifetime Limited Warranty
- Powered by micro-USB or with its included 3 AAA rechargeable batteries (user may substitute 3 AAA alkaline batteries if desired)
- Auto-off function if accidentally left on preserves battery life
- Superior Surface Mount Technology (SMT)
- Battery saving auto-off function
- Designed in the USA



### **#56-0775 GemOro Pro-D3 Diamond & White Sapphire Tester**

Identifies, detects and separates Diamond and Moissanite from CZ and White sapphires.

**Features:**

- Durable ABS housing covered with GemOro's exclusive rubberized paint that provides a superior grip.
- Sleek ergonomic shape and a precision retractable probe-tip with enhanced durability.
- Ready indicator and auto shut off. Fast warm-up time.
- Battery saving auto-off function.
- Bright white LED illuminator light.
- Glowing light pipe / probe tip cone / ring tone for quick stone identification.
- Illuminated probe tip changes colour to show results.  
Green=Diamond, Pink=Sapphire, Red=Metal alert.
- Powered by micro-USB or with included (3 x AAA) rechargeable NiMH batteries.
- Two year probe tip warranty. Lifetime limited replacement warranty on the tester.
- **INCLUDES:** NiMH rechargeable batteries, CC adapter/charger, loose stone holder and rubberized storage case.



### **#56-0778 GemOro Pro-M3 Moissanite Tester**

NEW ADVANCED EXCLUSIVE MOISSANITE TESTING TECHNOLOGY capable of identifying the widest range of the electrically conductive moissanite material available, including the new super low electrically conductive F1 moissanite

- Sleek ergonomic shape comfortably rests in and on your hand when held
- Durable ABS housing covered with GEMORO'S exclusive rubberized paint that provides an even greater grip
- Precision retractable probe-tip with enhanced durability
- Glowing light pipe / probe tip cone / ring tone for quick stone identification  
BLUE = Moissanite, RED = Metal Alert.
- Bright UV LED stone illuminator and diamond fluorescence detection light
- Powered by micro-USB or with its included 3 AAA rechargeable NiMH batteries (user may substitute 3 AAA alkaline batteries if desired)
- Superior Surface Mount Technology (SMT)
- Battery saving auto-off function
- Designed in the USA
- Two year probe tip warranty
- Lifetime Limited Replacement Warranty on the tester
- **INCLUDES:** NiMH rechargeable batteries, AC adapter/charger, loose stone holder, and compact rubberized portable storage case



### **#56-7360 The Presidium Gem Indicator**

Presidium Gem Indicator is the only handheld tester in the industry specifically For coloured gemstones. It indicates up to 31 different types of coloured gems based on their thermal conductivity and even features a colour input function that allows users to select from a range of 12 common colours, thereby achieving more accurate results. This comes complete with an easy to read clear LED screen.



### **#56-7370 Adamas Diamond & Moissanite Tester**

Adamas Diamond and Moissanite Tester is the world's first diamond and moissanite tester with interchangeable and micro probe tips by Presidium. This tester can be used with the special optional micro probe tip that can authenticate diamond melee as small as 0.01 carats (order # 56-7371). This tester features built-in memory chip for up to 500 test records, dynamic display with super bright micro-LED for clear and distinct results, sleek brushed chrome ergonomic grip and a USB port for alternative power source and connectivity.





### **#56-7380 Presidium Gold Karat Tester Kit**

This device is super user friendly. It was developed by Presidium to estimate the purity of gold alloys in the unit of Karat (from 8K to 24K) as accurately as possible through motorized dispensing of testing liquid in a uniform quantity to achieve consistent results.

Each kit includes, state of the art dispenser pen, slim test platform with clear LED display, cunit connector wire, 3 vials of testing liquid, refill petri dish, protective partitioned carrying case

- ✓ Identifies, yellow, white gold and platinum.
- ✓ Indicates if it is a non-gold metal.
- ✓ Clean and safe dispenser pen.
- ✓ Not destructive to your gold jewellery.
- ✓ 200 tests per vial of liquid.



### **#56-719 Presidium "Multi Tester III"**

A light and portable tester that instantly identifies diamonds and Moissanites based on their thermal and electrical properties.

#### **Features:**

- Retractable thermoelectric probe tip for enhanced accuracy that ensures constant pressure between probe and gemstone.
- International voltage compatibility.
- Industry's thinnest probe tip (0.60mm) for testing diamonds as small as 0.02ct.
- Ergonomic design with rubberized anti-slip grip for better handling during testing.
- LED display is user friendly for both left and right-handed users alike.



### **#56-719-AD Adapter for Presidium Multi-Tester III**

Optional ac/dc adapter for use with the Presidium Multi-Tester III



### **# 56-7390 Presidium Synthetic Diamond Screener**

This tool identifies lab crown diamonds and cvd/hpht diamonds through measurement of UV absorption. This machine screens out type Ila colorless diamond, which is likely to be synthetic and created through chemical vapor deposition (cvd) or high pressure temperature (HPHT) syntheses, from the natural Type Ia colorless diamonds. These different diamonds absorb UV light differently. Type Ila diamonds allow a deeper uv light to pass (meaning absorption ability is low).

The Presidium Synthetic Diamond Screener features the following:

- ✓ Advanced technology that measures a diamond's UV light transmittance ability.
- ✓ 2 colour coded (blue/red) indicator light bars to give a low or high reading of UV light absorption with blue light indicating Natural Diamond and red light indicating Type Ila Diamond.
- ✓ Instantaneous clear results within 6 seconds.
- ✓ Exterior base foam padding to ensure non-slip sturdiness and prevent scratches to surfaces.
- ✓ Stream-lined ergonomic design that enhances portability and stability.
- ✓ Low battery indicator.
- ✓ Energy-saving auto power-off of device after 10 minutes without operation.
- ✓ Interior LED light source and testing area.
- ✓ Energy-saving auto power-off of interior LED light source when lid of device is open or when Start Test button is not activated.
- ✓ USB port for alternative power source and connectivity



Only for Colorless Diamonds of: Color Grade D to J Color, Carat Size: 0.1 carat to >10 carats, Cut: For all cuts as long as gemstone has a flat surface, Mounted Jewelry: For jewelry with "open back"

**#56-720 Presidium "Gem Tester"**

A light and portable instrument that instantly identifies diamonds and most coloured gemstones based on their thermal properties. Test polished or unpolished gemstones as small as 0.02ct with consistent and reliable results every time.

**Features:**

- Retractable thermoelectric probe tip that ensures constant pressure between probe and gemstone.
- Industry's thinnest probe tip (0.60mm) for testing diamonds as small as 0.02ct.
- Metal alert buzzer to ensure that probe is in contact with gemstone only during testing.
- built in diamond and simulant test discs for reference.
- Powered by 2 x AA cells or AC/DC adapter (included).
- supplied in rigid hinged case with latched lid. Leather carrying case also provided.

**#56-722 Presidium "DiamondMate-A" Diamond Tester**

The Presidium Diamond Mate-A utilizes proven thermal conductivity testing method to instantly verify authenticity of diamonds. The test results are indicated by visual light and audible beep.

**Features:**

- Pocket size - Low battery indication.
- Carrying case
- Metal detector - Intermittent tone - Measured diamond-continuous tone.
- 1 year warranty
- Operates on 3 AAA batteries (not included) or an AC/DC adapter (not included)  
(For AC/DC adapter order #56-730)

**#56-723 Presidium "DiamondMate-C" Diamond Tester**

The Presidium Diamond Mate-C utilizes proven thermal conductivity testing method to instantly verify authenticity of diamonds. Same as DiamondMate-A, but with rechargeable batteries and AC adapter

**Features:**

- Pocket size –
- Low battery indication.
- Rigid, hinged storage case, plus a leatherette carrying case
- Metal detector - Intermittent tone - Measured diamond-continuous tone.
- Operates on NiCad rechargeable batteries (included) or AC/DC adapter (included).
- 1 year warranty
- 

**#56-724 Presidium Moissanite tester II**

Presidium Moissanite tester II is a 2<sup>nd</sup> generation Moissanite tester developed using the science of electrical conductivity.

**Features:**

- Pocket size
- Low battery consumption
- Carrying case
- Metal detection
- Continuous tone when testing moissanite
- 1 year warranty



**#56-729 Presidium "A-Source" Diamond/Moissanite Multi Tester**

Basic economy dual diamond & Moissanite tester. Uses separate thermal & electrical conductivity testing method to separate diamonds & Moissanite. The test results are indicated by visual light and audible beep.



**Features:**

- Low battery indication
- Carrying case
- Metal detection
- 1 year warranty
- Operates on 3 AAA batteries (not included) or an AC/DC adapter (not included).

**#56-7350 Presidium Refractive Index Meter II (PRIM II)**

A light and portable instrument that identifies diamonds, moissanites, and coloured gemstones based on their Refractive Index in seconds. Unlike a traditional refractometer, the Presidium Refractive Meter II (PRIM II), displays the range of R.I. value from 1.000 to ~3.000 without the inconvenience (and expense) of R.I. liquid, making it quick and easy for you.



**Features:**

- Clear and easy-to-read direct R.I. LCD display panel.
- International voltage compatibility.
- Built-in R.I. chart reference.
- Automatic power off.
- Portable and lightweight
- Fast..Ideal for quick separation of known gemstones and speeds up on the identification of gemstones.
- Flexibility-Allows for further elimination of gemstones via known values such as colour, hardness and S.G.
- Dictionary... Displays properties of 57 gemstones.
- New Prim II software allows the user to integrate this unit with their PC.

**Premixed Test Acids**

Ready to use, targeted test acids. Use in conjunction with a black test stone.

Supplied in half ounce dropper bottles with screw cap – limited supplies – discontinued when sold out

- #56-803** 22K test acid
- #56-805** Platinum test acid
- #56-744** black test stone 1 7/8" x 1 7/8" x 3/16"

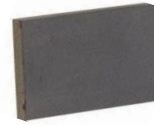


### **#56-706 Set of 4 Test Needles**

Set of gold test needles (10K-14K-18K-sterling). Used as a comparison standard when testing gold on a test stone.

### **#56-710 Black Test Stone**

Black stone for testing with acids. Item is rubbed on stone and test acids applied. If any uncertainty, use test needle for direct comparison. 2" x 1½" x ¼"



### **#56-748 Wood Case for Test Acids (5 compartments)**

Wood case with hinged lid & magnetic catch for storing test acids and accessories (black stone, needles etc.) This case is divided into 5 compartments. Dimensions W107 xH 100 x D70mm



### **#56-782 Model "GT-3000" Gold Tester**

The most accurate, low-cost tester available by Tri-Electronics. Measures white, yellow, pink and green gold in a full range of values from 6 to 18 Karat. No dangerous chemicals or mixing of fluids. This unit is easy and dependable. It has long been a favorite with the pawn shops where dependable testing is essential.



### **#56-785 Model "GT-4000" Gold Tester**

The most accurate, low-cost tester available by Tri-Electronics. Measures white, yellow, pink and green gold in a full range of values from 6 to 24 Karat. No dangerous chemicals or mixing of fluids. This unit is easy and dependable. It has long been a favorite with the pawn shops which are the front line trenches, where dependable testing is essential.



### **#56-650 GXL NEXT Gold, Silver & Platinum Tester**

The next generation of gold testers.

- ✓ Able to test gold, silver & platinum.
- ✓ Unrivaled electronic karat determination with full range from 6 to 24K.
- ✓ Quick mode testing feature instantly measures yellow gold in
- ✓ 10, 14, 18, 20, 22, 24 karats.
- ✓ Touch mode allows for testing without the push of a button - simply touch.
- ✓ Capable of 1000+ clear and clean tests per cartridge with no mess.
- ✓ Our liquid testing solution is harmless and contains no toxic chemicals.
- ✓ GXL does not require calibration.
- ✓ If sensor is left uncapped, it will not deteriorate or dry out.
- ✓ 3 year limited warranty. Made in USA.
- ✓ Supplied in a rigid hinged carry/storage case.



**#56-766** Replacement Gel-tube for GT-3000 tester.

**#56-767** Replacement Gel-tube for GT-4000 tester.

**#56-670** Gold testing solution Gel-tube for #56-650



**#56-2007 GemOro® "AuRACLE AGT-1" Deluxe Plus Gold & Platinum Tester Kit**

Quickly, safely and accurately buy and appraise gold with confidence. This hand held electronic gold tester has unmatched accuracy (patented).

- ✓ Tests all colors of gold from 6K to 24K and tests platinum.
- ✓ Identifies non-gold, gold plate and gold filled as NA.
- ✓ Immediate test results...no waiting between tests.
- ✓ Simply touch the pen probe to gold and LED indicates karat.
- ✓ Pen probe provides approximately 5000 tests with proper care.
- ✓ Tester can be recalibrated by user.
- ✓ Operates on one 9V battery (supplied) or AC/DC adapter (supplied).
- ✓ Supplied with Pen probe, battery and easy to follow instructions.
- ✓ Replacement Pen probes available.
- ✓ Supplied in a deluxe, rigid, zippered case for safe storage or transport.



**#56-2010 GemOro® "AuRACLE AGT3" Digital Gold & Platinum Tester Kit**

Gemoro's advanced digital Auracle® AGT3 is the ultimate verification instrument for gold and platinum testing. This state-of-the-art potable, handheld tester has exceptional precision, is simple to use and in only seconds provides accurate test results.

- ✓ Tests all colours of gold from 6K to 24K and platinum.
- ✓ Dynamic alphanumeric LCD display shows karat value and gold percentage.
- ✓ To perform test simply touch probe to filed jewellery.
- ✓ Dual test modes – fast test yellow mode and enhanced test mode.
- ✓ Easy one-step calibration.
- ✓ Durable nickel-plated stainless steel test plate.
- ✓ Easy to read large LCD display.
- ✓ Smart, two button control panel.
- ✓ Low battery indication.
- ✓ Powered by 9V battery or AC adapter (both included)
- ✓ Includes AGT3, pen probe, file, battery, AC adapter and rubberized compartmentalized storage/carry case.
- ✓ One year limited warranty.



**#56-2015 Replacement Pen Probe for AGT1/AGT2** For 56-2000, 56-2003, 56-2005

**#56-2016 Replacement Pen Probe for AGT3** For 56-2010

Pen Probe requires replacement after approx. 5000 tests (depending on usage). Just plug in the new pen and you're ready to go.



**#56-2002 Calibration Disc**

6.35mm round 14K calibration disc for 56-2000, 56-2003, and 56-2010

**#29-875 20X / 40X Gemological Microscope**

Features:

- ✓ Built-in light and darkfield illumination
- ✓ Eye tubes have comfort eye guards and can be adjusted for eye width.
- ✓ 360° rotating head
- ✓ Upper and lower lighting
- ✓ Additional stages in white, black and clear
- ✓ "Full view" rotating gem clip
- ✓ Dust cover
- ✓ Warranty 90 days

**Great Value at an Affordable Price**



### **#29-900HD Grobet USA® 1080P Full High Definition Digital Microscope**

24X to 220X Magnification. Enhanced viewing, measuring, and recording of gemstones, jewelry, and more. Easy to use.

Top quality image sensor. Superior image quality.

Top quality glass microscopic lens. Image easily shared in full HD.

#### **Specifications:**

3.5" LCD Screen with HD Color Display HDMI Digital Microscope

Video crystal output: 1080p Full HD Image: 3 Mega Pixels. Photo format: JPEG.

Manual focus from 10mm to 500mm, Magnification: 24X to 220X

Illumination: 8 LED, adjustable

Storage: MicroSD card, up to 32G (not included)

**Operation System:** Microsoft Windows XP / Vista / 7 / Mac 10.6 and above



### **#56-1574 Gemoro 10X / 30X Elite Model 1030PM Microscope**

Our Elite Series GemOro microscopes all feature superior Japanese quality optics for crisp, clear, distortion free viewing. As standard equipment, each microscope has true professional darkfield / brightfield illumination with a sliding baffle. The adjustable iris diaphragm controls the width of the lower light. For customer viewing and for convenience they all have 360 degree rotating heads and come with a gem clip stone holder, eye guards and dust cover.

Go on a buying trip traveling the world while using our GemOro microscopes, as they feature internationally adaptable 100V-240V multi-voltage which automatically adjusts to each country's specific power. These fine microscopes are designed for years of use and include a 5-year mechanical warranty and a 2-year electrical warranty.

As an optional accessory, an additional overhead light source #56-1590 with natural daylight tube easily attaches to the base (included on the #56-1584).



### **#56-1590 Optional Overhead light source for microscope**

Additional lighting for microscope #56-1574

Plugs into outlet on microscope base.



### **#56-1587 Elite 1067 ZX Plus Microscope**

10x - 67x zoom microscope with new ELITE base and built-in Overhead Light Source.

**NEW** - Full LED lighting - top and bottom (dark field) illumination)

**NEW** - LED Gooseneck overhead light source.

**NEW** - Magnetic rollerball stone holder / gem clip – patent pending.

**NEW** - Convenient handle for easy and safe transport.

**NEW** - Increased ergonomics with the low-positioned oversized focusing knobs.

Forearms may now rest on the stage without fatigue after extended use.

**NEW** - Improved WF-15X eyepieces, providing crisp 10X-67X magnification.

**NEW** - Universal voltage power: 100V-240V with auto-switching.

**NEW** - Optional 2X auxiliary lens (doubler) available for magnification boosting (Item #1589).

#### **GemOro Elite 1067ZX PLUS features:**

- ✓ 10X - 67X zoom microscope with built-in additional overhead light source.
- ✓ Superior Japanese quality optics.
- ✓ True professional darkfield / brightfield illumination with a sliding baffle.
- ✓ Adjustable iris diaphragm controls the width of the lower light.
- ✓ 360° rotating head for convenience.
- ✓ Includes gem clip stone holder, eye guards and dust cover.
- ✓ Features a 5-year mechanical warranty and a 2-year electrical warranty.



### **#56-1594 Limited Edition DSPRO 1067 LED Elite Microscope**

The 1067 LED integrates the best features and accessories from all of the competitive microscopes in its class. It utilizes an unparalleled technological breakthrough with long-life LED technology, providing superior, ultra bright, yet cool, natural daylight illumination at a fraction of the former industry leader.

#### **Standard Features:**

- ✓ Adjustable iris diaphragm.
- ✓ Microscope head and base swivel 360°.
- ✓ Precision 10x - 67x zoom Superior Japanese optics in an Olympus style head.
- ✓ Rheostat controlled intensity, super bright LED dark-field / bright-field.
- ✓ The world's first super bright, yet cool, LED natural daylight illuminated gem. scope for the ultimate gemological professional!
- ✓ LED goose neck interchangeable UV / LED intense-beam light source for inspection & fluorescence detection may be used on the right or left side of the base
- ✓ International voltage sensing, automatically adaptable 110/220V dual voltage powered
- ✓ 5 year mechanical & 2 year electrical warranty
- ✓ Supplied in a custom, padded lockable metal storage/carrying case.



### **#56-726 Presidium Digital Gemstone Gauge**

A convenient digital gauge with precise accuracy, to measure gemstone dimensions and gives direct carat conversion (with precision to 3 decimal places) for round brilliant-cut diamonds. Its touch button zeroing allows the convenience of resetting to zero at any measurement point. Attachment for high-setting jewelry provided as accessory. Compact protective case included with auto-magnetic power off when placed in carrying case. Operates on 1 x CR2032 cell (included)



### **#56-7261 Presidium A-Source Electronic Gemstone Gauge - ASEGG**

The A-Source Electronic Gemstone Gauge displays measurements using digital display with .01mm accuracy

#### **Features:**

- ✓ Auto-Magnetic Shut-Off: This power saving feature is immediately activated when you place the Electronic Gemstone Gauge in its carrying case.
- ✓ Solid State Electronics 1/100 mm Accuracy.
- ✓ Touch button zeroing makes subtracting unnecessary.
- ✓ High Setting Attachment, allowing you to measure mounted gemstones.
- ✓ 1 Year Factory Warranty.



### **#56-7262 Presidium Gem Computer Gauge – PGCG**

Presidium Gem Computer Gauge measures the dimensions and estimates the weight of loose and mounted gemstones with precision, speed, and ease. It is able to estimate the carat weight of both diamonds and various colored gemstones in 9 different cuts, without having to dismount the stone to weigh separately. With PGCG's computer interfacing, gemstone measurement records can be easily imported and printed. PGCG also comes with a CD-Rom that lists the S.G. value, R.I. value, and hardness measurements of 133 common gemstones in the market for handy reference. Manufactured to the highest quality and features a patented anvil with a non-metallic lubrication-free rack and pinion technology that resists wear and tear and maintains its precision and accuracy.



### **#35-1904 "Suregauge™ XL" Digital Pocket Gem Gauge**

This digital pocket-sized gauge is perfect for measuring mounted stones, high-set stones and unmounted stones and pearls. It has a measuring range of 0-25mm (0-1") with a precision accuracy of 0.01mm (0.0005"). There are three measuring surfaces on the Suregauge™ XL for easy measuring. Includes gem weight estimating conversion book, 1 x LR44 cell and high setting attachment pin all supplied in convenient protective storage case.

- ✓ Measures in mm and inches up to 25mm on large LCD display.
- ✓ Compact, portable design
- ✓ Hardened steel measuring jaws
- ✓ On/off power control and Zero reset button
- ✓ Protective carrying case



### **#35-180 Digital Vernier Style Sliding Gauge**

Made of stainless steel. Measures inside and outside in inches and millimeters. Capacity 0-6 inches with .001" resolution, or 0-150 mm with 0.01 mm resolution. Includes zero set button and depth measuring rod. Protective carrying case and battery included.



### **#56-727 Presidium Mechanical Gemstone Dial Gauge**

Presidium Dial Gauge measures from 0.0 to 23.0mm in 0.1mm divisions. The PDG features an easy-to-read millimeter and carat scale, and is only dial gauge in the industry that combines dual measurements for gemstones in millimeters with corresponding carat conversion for round brilliant-cut gemstones. PDG also contains an inner scale display for US ring size measurements. The PDG is manufactured to the highest quality and features a patented anvil with a non-metallic lubrication-free rack and pinion technology that resist wear and tear and maintain its accuracy. Supplied in a rigid storage case.

#### **Features**

- ✓ Measures from 0.0 to 23.0mm. Accuracy: 0.1mm / Tolerance: 0.02mm with simple zero realignment
- ✓ Analog gauge with mm/ct./ring size display
- ✓ Patented anvil
- ✓ Smooth slider mechanism
- ✓ Compact protective case included
- ✓ Attachment for high setting jewelry provided
- ✓ Presidium Gemstone Weight Estimation Table provided



### **#13-110 Grobet USA® 3 Bulb Bench Lamp**

Suitable for workshop or desktop use. Three fluorescent bulbs provide ample illumination for any task. The innovative design allows the user to raise, lower or tilt, directing the light onto your work quickly and efficiently.



### **#13-125 Grobet USA® Inspection Lamp**

Inspection lamp with a 5" diameter lens which provides 1.75X magnification. All metal construction provides durability and the adjustable arms allow quick, efficient positioning of the lens. Illumination is provided by a 22-watt circline fluorescent bulb. Features a flip up dust cover for the lens. Colour: White.



### **#13-155002 "Arbe" LED Task Lamp.**

The popular Arbe task lamp now comes in the LED style. Features 14W LED lights (6000K) that put out brighter, crisp lighting and most of all energy efficient. LED's are placed in the 25" swivel head that has a diffuser installed over the LED lights to provide uniform light with maximum surface area. Another added feature includes the ability to dim the light with dimmer knob installed. This LED Lamp with its polished, sleek look will add a professional look to your bench, work area/space. Head swivels 310° and tilts 210° for great flexibility. Heavy-duty 32" arm with tempered steel springs and smooth-glide tension control knobs allows easy adjustment. Includes C-clamp for mounting on bench tops up to 2" thick and 5' power cord.





## **55 watt "Arbe" Jewellers Task Lamp**

This lamp gives out almost twice the light of regular bench lamps which means, you don't need to have the shade low down in your work space. The daylight spectrum output is easier on eyes than the regular fluorescent tubes and shows things in their true colors. You won't believe what a difference it makes. Beautifully designed – Brilliantly executed.

### **Features:**

- Super bright 55 watt bulb rated @ 6500 K. Daylight
- Fluorescent light diffuser for balanced light distribution
- Lightweight extruded aluminum body construction
- 25" Head swivels 310° and tilts 210° for great flexibility.
- Heavy-duty 32" arm with tempered steel springs and smooth-glide tension control knobs allows easy adjustment.
- Includes C-clamp for mounting on bench tops up to 2" thick and 5' power cord.

**#13-155000**.....Silver

**#13-155000B** ...Black

**#13-155000W** ..White



## **#13-30000 Jewellers Magnifier Task Lamp**

Beautifully designed – Brilliantly executed

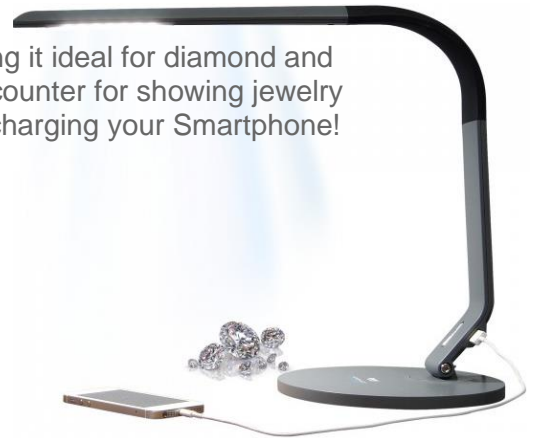
### **Lamp features:**

- ✓ Now with super bright LED bulb assembly.
- ✓ 5" diameter, 3 diopter glass lens.
- ✓ Light weight extruded aluminum body.
- ✓ Fully positional articulated arm.
- ✓ Convenient positioning handle mounted on hood.
- ✓ Dual mounting configuration.
- ✓ Made in USA by "ARBE" Machine Mfg. Inc.

## **#13-2257 Natural Daylight Diamond Grading Lamp**

The Horizon LED by GemOro features natural daylight illumination making it ideal for diamond and gemstone color grading. The ultimate task lamp may be placed on your counter for showing jewelry under its super bright, yet cool high-power LEDs. It even has a USB for charging your Smartphone! It has a sleek, modern, ergonomic design with its superior lighting.

- ✓ 6000K full spectrum natural daylight illumination
- ✓ High-power long life LED technology
- ✓ Electronic touch sensor power switch and dimmer
- ✓ USB power port for recharging smart phones, iPod™s, etc.
- ✓ Flex-arm and swivel provide fully adjustable light angle
- ✓ 100V-240V multi-voltage UL listed adaptor
- ✓ Black in colour



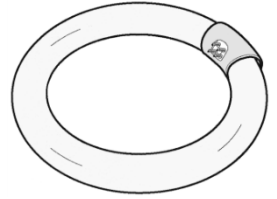
## **#12-209 "UV Lamp" for Curing Ultraviolet Crystal Cement**

Compact UV lamp cures UV crystal cements in 2 to 5 minutes.  
A Superior cementing system for setting mineral watch crystals.  
If you're not using the UV system...then you're doing it the hard way.  
Dimensions: W 178mm x D 116mm x H 72mm  
Operates on 110 V. Spare bulbs available.



Improve your workspace by changing your lamps to bulbs with a daylight spectrum of light.  
You will be surprised at the difference!

- #13-140** 22 watt circline fluorescent bulbs.
- #13-144D** 15 watt straight bench lamp bulbs - DAYLIGHT
- #13-144** 15 watt straight bench lamp bulbs – warm white



## SCALES

### **#51-9701 My Weigh® iBeam™700 Digital Tabletop Scale**

Quality digital scale with 700 gram capacity and a long list of features.

**Features:**

- ✓ Capacity 700 gr. X 0.10gr.
- ✓ Removable tray cover.
- ✓ Reads in grams, oz. - 1/8 oz. - 1/4 oz. - troy oz. – dwt. - ct.
- ✓ Tare & beep function.
- ✓ True division load cells.
- ✓ Large backlit LCD display.
- ✓ Large stainless platform.
- ✓ Adjustable auto off and backlight features.
- ✓ Advanced parts counting.
- ✓ AC adapter included (or use 6 x AA cells- optional)
- ✓ Low battery indicator.
- ✓ Digital auto calibration.
- ✓ 3 year limited warranty.

Not legal for Trade



### **#51-9703 Jennings Digital Tabletop Scale (Model CJ-600)**

**Features:**

- ✓ Scale cover that doubles as a parts bowl.
- ✓ Stainless steel platform.
- ✓ Extra-large, orange backlit LCD screen.
- ✓ Advanced parts counting.
- ✓ Rubberized faceplate with easy-touch keys.
- ✓ Batteries included.
- ✓ Reads in grams, ounces, pounds & pennyweights.
- ✓ Capacity 600 grams.
- ✓ Accuracy/readability 0.1 gr.
- ✓ 2 year limited warranty.

Optional AC/DC adapter available  
Order #51-97025

Not legal for Trade



### **#51-9704 My Weigh® GEMPRO 250 Precision Pocket Carat Scale**

**Features:**

- ✓ Capacity 250 carats x 0.005ct / 50gr x 0.01gr.
- ✓ 6 Weighing modes (carats – gr. – oz. - troy oz. - dwt. & grains)
- ✓ Protective case (included) - Calibration weight (included)
- ✓ Retractable wind shield cover.
- ✓ Adjustable feet and bulls eye level.
- ✓ Bright backlit display.
- ✓ Operates on 4 AAA cells or AC/DC adapter (included)
- ✓ Supplied with a scoop, weighing tray & tweezers.
- ✓ 3 year limited warranty.

Not legal for Trade



**#51-9705 My Weigh® iBalance™211 Precision Tabletop Carat Scale**

**Features:**

- ✓ Capacity 1,050 x .005 carat / 210 x .001 gram.
- ✓ Reads in carats, gr. – oz. – oz. troy – dwt. – lbs.
- ✓ Professional 210,000 division sensors.
- ✓ X-large backlit display.
- ✓ Stainless platform.
- ✓ Full glass wind cover with 3 sliding panels.
- ✓ AC adapter included.
- ✓ Adjustable feet with bubble level.
- ✓ 3 year limited warranty.



Not legal for Trade

**#51-9706 Jennings Digital Pocket Scale (Model JSR-200)**

**Features:**

- ✓ Capacity 200 x 0.01 grams.
- ✓ Reads in grams, oz. – oz. – lbs. - troy oz. – dwt. – ct.
- ✓ Tare & zero functions.
- ✓ Batteries included.
- ✓ Auto off feature.
- ✓ Large red LCD backlit display.
- ✓ Stainless weighing pan.
- ✓ Advanced parts counting.
- ✓ Cover doubles as a tray.
- ✓ 2 year limited warranty.



Not legal for Trade

Scale size 3" x 5¼"

**#51-9707 Jennings Digital Pocket Scale (Model JSR-600)**

**Features:**

- ✓ Capacity 600 x 0.1 grams.
- ✓ Reads in grams, ounces, pounds, troy ounces, pennyweights, grains.
- ✓ Tare & zero functions.
- ✓ Batteries included.
- ✓ Auto off feature
- ✓ Large red LCD backlit display.
- ✓ Stainless weighing pan.
- ✓ Advanced parts counting.
- ✓ 2 year limited warranty.



Not legal for Trade

Scale size 3" x 5¼"

**#51-9708 My Weigh® iBalance™201 Precision Gram Scale**

**Features:**

- ✓ Capacity 200 x 0.01 grams.
- ✓ Reads in gr.- oz.- ozt.- mg.- dwt.- ct.- gn.
- ✓ Adjustable leveling feet. - Bubble level.
- ✓ Wind screen cover.
- ✓ Stainless steel tray.
- ✓ Adjustable auto off.
- ✓ Backlit display.
- ✓ Parts counting feature.
- ✓ Calibration weight included.
- ✓ AC adapter included.



Not legal for Trade

✓ 3 year limited warranty.

## **#51-9711 My Weigh® iBalance™1201 Precision Scale**

### **Features**

- 1200 gram capacity x accuracy of 0.1gr.
- Weighs in g, oz, lb, ozt, dwt, ct, gn, pcs.
- Large stainless steel tray 5.75" x 5.75"
- Dimensions: 8.25" x 5.75" x 1.50
- Large, Blue Backlit LCD Display.
- Operates on 9V AC adapter (included)  
Or 6 AA batteries (not included)
- Programmable Auto Off Function.
- Advanced parts counting feature.
- 3 Year Warranty.



Not legal for Trade

## **#51-9760 Gemoro "Platinum V600M" Mini Gram Scale**

### **Features**

- ✓ 600gr x 0.1gr, dwt, ozt, and oz.
- ✓ Stainless steel weigh platform.
- ✓ Bright blue backlit illuminated LCD display.
- ✓ Push button digital calibration, tare, memory, low battery indication. & auto-off function.
- ✓ Includes a built-in, yet removable protective cover that doubles as a weighing tray.
- ✓ Operates on 2 x AAA cells (included).
- ✓ 2 year limited replacement warranty.



Not legal for Trade

Dimensions: 88.5mm x 60mm x 20mm

## **#51-9880 Gemoro Platinum PCT101 Carat Scale**

- 100ct x 0.005, g, dwt, oz, ozt and gn.
- Parts counting function.
- Large stainless steel weighing platform & bright blue backlit display.
- Push button digital calibration, tare, memory, low battery indicator and auto-off function.
- Innovative low profile tinted draft shield.
- Durable ABS construction with EZ-grip rubberized paint finish.
- Includes a rubberized protective travel / storage case with compartments containing scale, stainless steel calibration weight, stainless steel weighing platform, scoop, AC adaptor and Swiss-style locking diamond tweezers.
- Powered by (4) long-life included AAA batteries or its supplied universal voltage 110/240V AC adaptor
- 5 Year limited replacement warranty.



## **#48-85000 Ring Stretcher/Reducer**

EURO TOOL's Ring Stretcher/Reducer is great quality and a great value!

### **Features:**

- Enlarges and reduces rings quickly.
- Mandrel clearly marked with ring sizes 1-15.
- Tapered mandrel has 6 splines.
- Reduction plate is two-sided with 16 reduction depressions.
- Four holes in base for mounting on sturdy workbench or table.



Overall height: 16".  
Complete instructions included.

### **#28-30000 Bench Top Drill Press**

This new, easy-to-use benchtop drill press is tiny, but powerful enough to use for all of your drilling projects. With a platform measuring only 6-3/4" x 6-3/4", it is space-saving as well as economical. Variable speed up to 8,500 RPM. One year warranty.

For drill press vise – see next page.



### **#58-26500 Drill Press Vise**

This handy aluminum Drill Press Vise is great for use with our Bench top drill press (28-30000). Vise has slots and hardware included for optional attachment to drill press base. Its quick release feature permits rapid opening and closure of the jaws or use the handle to make smaller adjustments.

Jaws: 2-1/2" wide (65mm) x 1-1/16" high (27mm).

Maximum jaw opening: 2-3/4" (70mm).

Overall dimensions 9-1/2" long x 4-1/2" wide.



### **#38-40509 Beaders Tool Kit**

The Superior Beader's Tool Kit from EURO TOOL offers all the essential tools for beading or wire working. In a compact, leatherette case, this set is perfect for the artist on the go!

The following items are included in our lightweight, compact tool kit:  
Original Bead Crimping Pliers - Split Ring Tweezers  
Knot Cutter - Chain Nose Pliers  
Nylon Jaw Pliers - Round Nose Pliers  
#5 Knotting Tweezers – Side-cutter - Wire Rounder



**#38-42100 Professional Pearl/Bead Stringing Kit**

This Professional Pearl/Bead Stringing Kit includes items specifically needed for stringing and knotting for the experienced and professional level.

The following tools and supplies come with a durable canvas tote:

- Original Bead crimping pliers
- Stringing Instruction book
- Beeswax - Flocked bead board
- Chain nose pliers
- Carrying tote
- Italian flush cutters
- Flat nose pliers
- Thread scissors
- Round nose pliers
- Brass mm gauge
- Deluxe bead reamer set
- Pearl/bead tweezers
- Stringing needles
- Silk thread assortment
- Container organizer
- Jeweler's Cement
- 100 Sterling silver crimps
- Knotting Tool with DVD



**# 45-2512000 25 AMP Plating Machine**

**ARBE USA** pro electroplater 110v/60Hz/1Ph w/Leads  
Industrial grade, heavy duty output transformers

- Oversized heat sinks and built in cooling fan prevent overheating
- Output current is 99% filtered to ensure maximum and repeatable results
- High quality insulated lead and clamp set
- 0-25 Amp output, continuous duty
- Adjustable voltage from 0-13 volts DC output
- Dimensions: 9 1/2" W x 7 3/4" D x 6" H



**#47-0117**

Mini Variable Speed Double Spindle Polishing Motor

- Polishing Motor HP: 1/6
- RPM: 1800-7000

Dimensions: 6" W x 4 1/2" D x 5 1/4" H



**#47-204000**

Large Double Spindle Polishing Machine

- ½ HP Polishing Motor
- Dust collector CFM: 465

Shipping Weight: 73 lbs. (Ships In 2 Boxes)

Dimensions: 32 1/2" W x 22" D x 12" H

110v/60Hz/1Ph **ARBE USA**

Replacement filters, #47-204003



**#47-206000**

Single Spindle Polishing Machine

- ½ HP Polishing Motor
- Dust collector CFM: 165

Shipping Weight: 47 lbs.

Dimensions: 15" W x 18.5" D x 10" H

110v/60Hz/1Ph **ARBE USA**



**ARBE USA PRO-SERIES PROFESSIONAL POLISHING MOTORS** Designed and manufactured

to be the most powerful and efficient motors in the industry, giving the end user the most horsepower and torque. The ARBE line of Pro-Series motors have exclusive design features not found in any comparable motor, making it the professional's choice. Exclusive Features: • Rubber framed resilient base mounting reduces vibration • Supplied with spindles

**# 47-206001** Single Spindle ½ HP Polishing Motor

- RPM: 3450

Shipping Weight: 19 lbs.

Dimensions: 9 1/2" W x 6" D x 6" H

110v/60Hz/1Ph

For Right Hand Replacement Spindle use #47-206574



**# 47-206100** Double Spindle ½ HP Polishing Motor

- RPM: 3450

Shipping Weight: 22 lbs.

Dimensions: 12 1/2" W x 6" D x 6" H

110v/60Hz/1Ph

For Right Hand Replacement Spindle #47-206574

For Left Hand Replacement Spindle #47-206572



**ARBE USA PRO-SERIES PROFESSIONAL POLISHING MOTORS** Exclusive Features: • High base, heavy duty, totally sealed and permanently lubricated. • Unique tapered and threaded shaft design virtually eliminates vibration. • Capable of handling up to 8” diameter buffs • Rubber mounted motor base reduces vibration

**# 47-206504** Variable Speed Double Spindle Polishing Motor

- The jewelry industry’s first and only fully variable 1/2 HP double spindle polishing motor, enabling full torque at any speed from 0-3450 RPM
- Supplied with spindles and 1/2” Arbors

Shipping Weight: 49 lbs.

Overall Width: 16”

Motor Height: 11”

Height to Center of Shaft: 7”

110v/60Hz/1Ph



**GENTEC®** lightweight and durable oxy-fuel Small Torch™ provides precision flame adjustment and control for soldering and brazing jobs on small parts or in very tight spaces. The small-size, chrome-plated brass torch handle, with stainless steel internal tubing and the small copper tips, provides the durability one needs. The 1/8” I.D. strong and flexible color-coded (green for oxygen and red for fuel gas) twin hoses are easy to maneuver. The Small Torch™ is perfect for hobby, craft, glass blowing, electronic repair and manufacturing • Designed to braze and solder the smallest of materials • Can melt up to 3 oz of silver and weld up to 5/32” thick steel • Provides a stable and precise concentrated feather flame up to 6000° F • SMITH EQUIPMENT® The Little Torch™ compatible

**#14-020500 Small Kit – Propane & Oxygen with 5 tips (#3 to #7)**

Each basic kit contains:

- The Small Torch handle, five tips
- and 12’ oxygen and fuel hoses with “B” fittings (9/16’) and “A” fittings (3/8”) adapter.



**#14-020600 Small Kit – Propane & Oxygen with 5 tips (#3 to #7) & Regulators**

Each basic kit contains:

- The Small Torch handle, five tips
- and 12’ oxygen and fuel hoses with “B” fittings (9/16’) and “A” fittings (3/8”) adapter,
- And oxygen and acetylene or propane regulators.
- Precision-machined brass regulators feature a compact rear entry design. Chrome-plated housing caps with plastic adjustment knob for smooth, easy touch pressure setting.





**#14-020800 Small Kit – Propane & Oxygen  
For disposable tanks with 1 tip (#4) & Regulators**

Convenient portable kit for use with disposable tanks comes complete with:

The Small Torch handle, one #4 tip,  
6' hoses and preset regulators for oxygen and propane,  
and a wire tank holder.



**#14-022500 Small Kit – Acetylene & Oxygen  
with 5 tips (#2 to #6)**

Each basic kit contains:

The Small Torch handle, five tips  
and 12' oxygen and fuel hoses with  
“B” fittings (9/16') and “A” fittings (3/8') adapter.



**#14-022600 Small Kit – Acetylene & Oxygen  
with 5 tips (#2 to #6) & Regulators**

Each basic kit contains:

The Small Torch handle, five tips  
and 12' oxygen and fuel hoses with  
“B” fittings (9/16') and “A” fittings (3/8') adapter,  
And oxygen and acetylene or propane regulators.  
Precision-machined brass regulators feature a  
compact rear entry design. Chrome-plated housing  
caps with plastic adjustment knob for smooth,  
easy touch pressure setting.



**#14-022700 Caddy Kit – Acetylene & Oxygen with 5 tips (#2 to #6) & regulators, tanks and caddy**

Each deluxe kit contains:  
The Small Torch handle, five tips (#2 - #6) and 12' oxygen and fuel hoses, check valves, oxygen and acetylene regulators. Oxygen, and acetylene cylinders, a tank wrench and a plastic carrier. Tanks shipped empty.



**#14-020025 Gentec Oxygen Regulator**

Features:  
Chrome plated housing caps.  
Body machined from class "A" brass bar stock.  
Single stage with rear entry construction.  
Compact rear mounted design allows for a better fit in caddy systems.  
Internal safety pressure relief valve.  
Stem type seat assembly for more reliable seating.



**#14-020425 Gentec Propane Regulator**

Features:  
Chrome plated housing caps.  
Body machined from class "A" brass bar stock.  
Single stage with rear entry construction.  
Compact rear mounted design allows for a better fit in caddy systems.  
Internal safety pressure relief valve.  
Stem type seat assembly for more reliable seating.



**#14-022425 Gentec Acetylene Regulator – MC tank**

Features:  
Chrome plated housing caps.  
Body machined from class "A" brass bar stock.  
Single stage with rear entry construction.  
Compact rear mounted design allows for a better fit in caddy systems.  
Internal safety pressure relief valve.



Stem type seat assembly for more reliable seating.

**#14-020801 Gentec Oxygen Regulator – for disposable tanks**

Features: Chrome plated housing caps.  
Body machined from class "A" brass bar stock.  
Single stage with rear entry construction.  
Compact rear mounted design allows for a better fit in caddy systems.  
Internal safety pressure relief valve.  
Stem type seat assembly for more reliable seating.



**#14-020802 Gentec Propane/MAPP Regulator – for disposable tanks**

Features: Chrome plated housing caps.  
Body machined from class "A" brass bar stock.  
Single stage with rear entry construction.  
Compact rear mounted design allows for a better fit in caddy systems.  
Internal safety pressure relief valve.  
Stem type seat assembly for more reliable seating.



**#14-020002**

#2 tip to fit Oxy/Acetylene Small Torch for high temperature melting and soldering applications. Fits Gentec, and Smith Little Torch



**#14-020003**

#3 tip to fit Oxy/Fuel Small Torch for high temperature melting and soldering applications. Fits Gentec, and Smith Little Torch



**#14-020004**

#4 tip to fit Oxy/Fuel Small Torch for high temperature melting and soldering applications. Fits Gentec, and Smith Little Torch



**#14-020005**

#5 tip to fit Oxy/Fuel Small Torch for high temperature melting and soldering applications. Fits Gentec, and Smith Little Torch



**#14-020006**

#6 tip to fit Oxy/Fuel Small Torch for high temperature melting and soldering applications. Fits Gentec, and Smith Little Torch



**#14-020007**

#7 tip to fit Oxy/Fuel Small Torch for high temperature melting and soldering applications. Fits Gentec, and Smith Little Torch

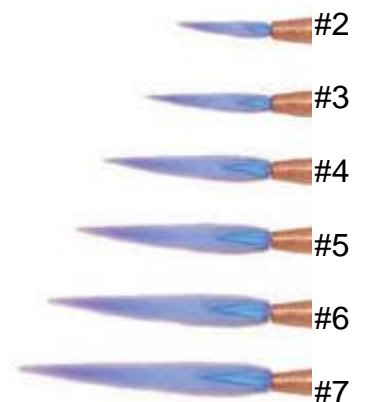


**#14-020023**

Twin tip - two #3 tips - to fit Oxy/Fuel Small Torch



Representative flame sizes



for high temperature melting and soldering applications.  
Fits Gentec, and Smith Little Torch

**#14-020460**

Propane melting tip. Specially designed multiple-orifice recessed tip for maximum melting power of up to 3 ounces of gold, silver or bronze. Multiple-orifice end produces flames which converge to produce a single flame. Length: 6".

Fits Gentec, and Smith Little Torch



**#14-022460**

Acetylene melting tip. Specially designed multiple-orifice flush tip for maximum melting power of up to 3 ounces of gold, silver or bronze. Multiple-orifice end produces flames which converge to produce a single flame. Length: 6".

Fits Gentec, and Smith Little Torch



**#14-020040**

Gentec replacement torch hoses  
Set of 2 – 6 feet length  
Durable and flexible hoses for The Small Torch  
come standard with "B" fitting



**#14-020050**

Gentec replacement torch hoses  
Set of 2 – 12 feet length  
Durable and flexible hoses for The Small Torch  
come standard with "B" fitting



**#14-020041**

Gentec hose clamps



**#14-0330 HANDY FLAME II PROPANE TORCH**

Best value of any propane torch on the market!  
All-in-one; no assembly required.  
For use with Propane or MAPP disposable fuel tanks.  
Automatic one-touch ignition.  
Efficient swirl flame for maximum heat output.  
Comfort ergonomic grip.  
5 ft hose (1.5 meters); all brass components.  
Temperatures up to 3700° F.



**#14-0331**

The EURO TOOL Handi-Holder is a safe, convenient way to keep your disposable fuel tanks secure. Fits both sizes of disposable tanks. Sure-grip PVC tips hold tank securely, allowing for one-hand adjustment.



Fits on table or workbench.  
Ideal for use with Handy Flame II Propane Torch (14-0330)

Page 43

### **#54-20009 Basic Soldering Kit**

Our 9pc Basic Soldering Kit includes all the essential tools for basic soldering applications.

Includes:

Micro-Flame Butane Torch

Sparex

Silver Solder

Flux

Magnesia Block

Copper Tongs

#1 Style Tweezer

Fiber Grip Tweezer and Tripod with Mesh Screen



### **#54-041005 HI-TEMP SOLDER BOARD**

This non-asbestos soldering board measures 4-1/4" x 4-1/4" x 1/2" and takes heat up to 3200°F. Especially handy for working with platinum.



### **#54-164 Hard Charcoal Block**

The world's best charcoal will last three to five times as long. This hard premium charcoal block is super compressed with a durable, hard surface that reflects heat back for faster and cleaner soldering. Measures 5-1/2" x 2-3/4" x 1-1/4".

### **#54-51000 Heetrix**

The Heetrix® mounts on top of the bench and the soldering platform swings out of the way when not in use. It also rotates for convenience. The included special third hand attachment with a fibre grip tweezer easily allows for hands free work. Remove the fitted Solderite Disc and a depression is revealed which holds soldering grain. Great for holding small parts and may be used wet or dry. Replaceable Solderite disc is 3-3/4" and overall length with swing arm is 7". Weight 1.8 lbs.

for replaceable Solderite disc – order # 54-41400



**#54-95000 Fume Extractor**

Lead-free solder has created a healthier environment, but the more active fluxes required to be used with it give off more fumes. Our new Fume Extractor is the perfect solution to this smoky problem.

**Features:**

Remove flux fumes from soldering workbench by drawing smoke through carbon-activated filter.

Can process up to 1.37 cubic meters of air per minute.

Adjustable stand allows for various angles.

Quiet fan.

ESD safe.

Comes with two filters.

Replacement filters (#54-95002 – PK) are available



**#54-777 Premium Tungsten Soldering Pick with Shield**

Solder Pick with heat shield has replaceable tips  
(for replaceable tungsten tips in a package of 2 tips order #54-7775)



**#57-01845 Soldering Tweezer with Rest**

Self-clamping tweezers for soldering. The built-in support makes it easy to position items for soldering and keeps the tweezer tips elevated. Heat resistant fiber grips protect fingers when handling. Length 6 1/2".



**#54-090100 Flux Bottle**

This is a hot and handy item for depositing flux or any other liquid exactly where you want it with just an easy squeeze. The bottle has a two ounce capacity.



item #	Price	item #	Price	item #	Price
12-209	\$73.40	29-5052	\$39.60	43-12601	\$73.10
12-265500	\$621.40	29-5053	\$40.40	43-30700	\$324.20
12-265500A	\$688.30	29-5054	\$40.40	45-2512000	\$550.80
12-319P	\$52.00	29-5055	\$40.40	46-052-P	\$22.70
13-110	\$129.00	29-5071	\$48.50	46-054-P	\$22.70
13-125	\$96.40	29-5072	\$48.50	46-056-P	\$22.70
13-140	\$25.40	29-5074	\$48.50	46-058-P	\$25.60
13-144	\$8.10	29-5301	\$48.20	46-059	\$52.10
13-144D	\$9.20	29-531	\$48.20	46-062-P	\$25.60
13-155000	\$228.60	29-532	\$48.20	46-068-P	\$135.50
13-155000B	\$228.60	29-533	\$48.20	46-0741	\$27.70
13-155000W	\$228.60	29-534	\$48.20	46-102-P	\$22.70
13-155002	\$332.40	29-535	\$48.20	46-104-P	\$22.70
13-2257	\$121.40	29-568	34.00	46-106-P	\$22.70
13-30000	\$231.30	29-670	\$35.00	46-108-P	\$22.70
14-020002	\$30.70	29-875	\$418.00	46-110-P	\$22.70
14-020003	\$30.70	29-900HD	\$356.40	46-112-P	\$22.70
14-020004	\$30.70	29-911	\$12.20	46-114-P	\$22.70
14-020005	\$30.70	35-0187	\$33.30	46-120-P	\$25.60
14-020006	\$30.70	35-0192P	\$52.00	46-126-P	\$25.60
14-020007	\$30.70	35-0193P	\$53.20	46-132-P	\$106.00
14-020023	\$46.40	35-100	\$4.80	46-512	\$39.20
14-020025	\$109.00	35-101	\$4.80	47-0117	\$127.00
14-020040	\$53.00	35-102	\$4.80	47-204000	\$887.40
14-020041	\$4.80	35-103	\$4.80	47-206000	\$645.00
14-020050	\$73.80	35-180	\$55.20	47-206001	\$391.60
14-020425	\$116.70	35-1904	\$120.90	47-206100	\$402.60
14-020460	\$40.20	35-260	\$22.00	47-206504	\$1,183.60
14-020500	\$174.60	35-2611	\$40.60	48-02430	\$45.40
14-020600	\$369.40	35-555	\$80.20	48-02431	\$12.90
14-020800	\$212.00	35-5901	\$1.00	48-0610	\$488.00
14-020801	\$88.20	37-112	\$10.90	48-0611	\$147.90
14-020802	\$88.20	37-530	\$15.60	48-180	\$74.70
14-022425	\$106.90	37-536	\$26.10	48-18600	\$274.70
14-022460	\$40.20	37-700	\$29.40	48-191	\$50.40
14-022500	\$174.60	38-40509	\$71.90	48-192	\$24.00
14-022600	\$369.40	38-42100	\$142.00	48-193	\$61.30
14-022700	\$576.30	39-0626	\$7.40	48-194	\$9.50
14-0330	\$79.30	43-031P	\$42.00	48-220	\$315.40
14-0331	\$20.00	43-033P	\$47.60	48-224	\$54.20
16-1913	\$11.70	43-036P	\$42.00	48-225	\$153.80
19-1914	\$11.30	43-038P	\$42.00	48-30100	\$403.40
25-14405	\$338.70	43-076P	\$47.60	48-85000	\$207.40
25-228500	\$1,137.50	43-077P	\$50.40	51-9701	\$70.40
28-18720	\$820.20	43-079	\$67.60	51-97025	\$14.70
28-18920A	\$1,017.10	43-079GR	\$57.20	51-9703	\$42.10
28-30000	\$123.90	43-080RC	\$44.80	51-9704	\$225.60
29-263	\$111.60	43-081P	\$80.60	51-9705	\$520.60
29-4650	\$12.10	43-082P	\$70.20	51-9706	\$27.20
29-5051	\$39.60	43-12500	\$49.50	51-9707	\$24.50

Prices subject to change without notice - prices as of Mar 23, 2022

Prices subject to change without notice - prices as of Mar 23, 2022

item #	Price	item #	Price	item #	Price
51-9708	\$123.30	56-7360	\$390.40	64-6403R	\$27.10
51-9711	\$91.50	56-7370	\$565.80	64-6744-P	\$14.60
51-9760	\$16.10	56-7380	\$648.90	64-6744-P1	\$14.60
51-9880	\$108.00	56-7390	\$732.30	64-6744PS	\$18.60
52-0720	\$51.90	56-744	\$5.30	64-6744PS-1	\$17.90
52-0906	\$39.60	56-748	\$32.60	64-6767-F	\$25.90
52-540	\$86.70	56-766	\$39.40	64-6767-S	\$25.90
53-30800	\$320.90	56-767	\$39.40	66-189810	\$20.00
53-9196	\$1,531.30	56-782	\$424.00	66-189810-1	\$12.10
54-041005	\$42.80	56-785	\$574.00	66-189820	\$24.20
54-090100	\$6.60	56-803	\$4.90	66-189820-070	\$8.40
54-164	\$22.00	56-805	\$4.90	66-189820-080	\$8.40
54-20009	\$112.80	57-01251	\$15.20	66-189820-100	\$8.40
54-41400	\$14.60	57-01845	\$7.20	66-189821-070	\$12.20
54-51000	\$60.40	57-0300	\$3.40	66-189821-080	\$12.20
54-77300	\$27.30	57-0304	\$2.80	66-189821-100	\$12.20
54-777	\$29.20	57-531	\$24.60	66-520	\$18.60
54-7775	\$14.80	57-532	\$25.10	66-9005-1	\$5.20
54-95000	\$73.70	57-957	\$1.90	66-9005-2	\$15.40
54-95002	\$9.40	57-958	\$5.10	66-9006	\$23.30
56-0770	\$331.17	58-2556	\$24.80	67-10004-060	\$7.00
56-0775	\$158.27	58-26500	\$16.50	67-10004-080	\$7.00
56-0776	\$264.67	59-0241	\$17.30	67-10004-100	\$7.00
56-0778	\$158.27	59-0455	\$6.70	67-10004-120	\$7.00
56-1574	\$529.00	59-0610	\$12.50	67-10004-150	\$6.30
56-1587	\$1,662.60	59-0610LG	\$12.60	67-10513	\$35.10
56-1590	\$179.30	59-0615	\$7.40	67-10519	\$51.40
56-1594	\$4,358.50	59-0625	\$6.40	67-1218A	\$164.00
56-2002	\$51.30	59-0790	\$40.50	67-1218B	\$86.20
56-2007	\$397.67	59-0791/1	\$9.50	67-19000	\$18.40
56-2010	\$743.47	59-0792	\$26.30	67-19105	\$50.90
56-2015	\$39.83	59-0795A	\$86.00	67-26114	\$8.10
56-2016	\$39.83	59-0797	\$26.40	67-30399	\$14.70
56-650	\$806.00	59-0798	\$29.00	67-400	\$33.30
56-670	\$31.60	59-0798B	\$22.00	67-7026	\$71.40
56-671	\$31.60	59-0798D	\$21.90	67-7026-B	\$21.40
56-706	\$90.50	59-0985	\$70.20	67-7106	\$124.10
56-710	\$16.90	59-0986	\$40.90	67-7107	\$101.80
56-719	\$295.50	59-0987	\$36.60	67-7108	\$103.50
56-719-AD	\$34.70	64-2819/8	\$304.80	67-7110	\$159.90
56-720	\$363.50	64-30080-E	\$27.00	67-7130	\$169.10
56-722	\$164.10	64-30080-F	\$27.00	67-9304	\$36.10
56-723	\$176.40	64-30080-G	\$27.00	67-99027	\$26.50
56-724	\$164.60	64-4422-1-5	\$16.20	67-99031	\$24.70
56-726	\$397.80	64-4422-2	\$16.20	67-99064	\$136.30
56-7261	\$229.70	64-4422-2-5	\$16.20	67-99155	\$26.60
56-7262	\$439.00	64-4422-3	\$16.20	68-15417	\$52.30
56-727	\$276.70	64-4422-3-5	\$16.20	DY-5370	\$9.30
56-729	\$231.90	64-4422-4	\$16.20	DY-5371	\$11.40
56-730	\$34.70	64-4657	\$23.80	DY-5372	\$19.30
56-7350	\$391.00	64-5970	\$189.90		