

# SJ 300 SLIP ROLL



**OPERATION MANUAL**

## Specifications

Item	SJ-300
Minimum Roll Diameter	∅ 32mm
Maximum Roll Length	300mm
Max. Thickness	1.0mm
Net Weight	13kgs
Packing Dimension	51 x 23 x 18cm

## Save This Manual

You will need the manual for the safety warnings and precautions, assembly instructions, operating and maintenance procedures, parts list and diagram. Keep your invoice with this manual. Write the invoice number on the inside of the front cover. Keep the manual and invoice in a safe and dry place for future reference.

## Safety Warnings and Precautions

**WARNING:** When using tool, basic safety precautions should always be followed to reduce the risk of person injury and damage to equipment.

### Read all instructions before using this tool!

1. **Keep work area clean.** Cluttered areas invite injuries.
2. **Observe work area conditions.** Do not use machines or power tools in damp or wet locations. Don't expose to rain. Keep work area well lighted. Do not use electrically powered tools in the presence of flammable gases or liquids.
3. **Keep children away.** Children must never be allowed in the

work area. Do not let them handle machines, tools, or extension cords.

4. **Store idle equipment.** When not in use, tools must be stored in a dry location to inhibit rust. Always lock up tools and keep them out of reach of children.
5. **Do not force tool.** It will do the job better and more safety at the rate for which it was intended. Do not use inappropriate attachments in an attempt to exceed the tool capacity.
6. **Use the right tool for the job.** Do not attempt to force a small tool or attachment to do the work of a large industrial tool. Do not use a tool for a purpose for which it was not intended.
7. **Dress properly.** Do not wear loose clothing or jewelry as they can be caught in moving parts. Protective, electrically non-conductive clothes and non-skid footwear are recommended when working. Wear restrictive hair covering to contain long hair.
8. **Use eye and ear protection.** Always wear ISO approved impact safety goggles. Wear a full-face shield if you are producing metal filings or wood chips. Wear an ISO approved dust mask or respirator when working around metal, and chemical dusts and mists.
9. **Do not overreach.** Keep proper footing and balance at all times. Do not reach over or across running machine.
10. **Maintain tools with care.** Keep tools sharp and clean for better and safer performance. Follow instructions for lubricating and changing accessories. The handles must be kept clean, dry, and free from oil and grease at all times.
11. **Stay alert.** Watch what you are doing; use common sense.

- Do not operate any tool when you are tired.
12. **Check for damaged parts.** Before using any tool, any part that appears damaged should be carefully checked to determine that it will operate properly and perform its intended function. Check for alignment and binding of moving parts; any broken parts or mounting fixtures; and any other condition that may affect proper operation. Any part that is damaged should be properly repaired or replaced by a qualified technician.
  13. **Guard against electric shock.** Prevent body contact with grounded surfaces such as pipes, radiators, ranges, and refrigerator enclosures.
  14. **Replacement parts and accessories.** When servicing, use only identical replacement parts. Use of any other parts will void the warranty. Only use accessories intended for use with this tool. Approved accessories are available from the distributor.

## **Unpacking**

The Slip Roll machine should come assembled when unpacked. Look for any loose parts in the packing material before discarding. If any are found, try and find the part on the machine is missing or broken, please call the Distributor as soon as possible.

## **Installation**

1. Mount the supporting structure (#25) and supporting seat (#27) by screw M8X16 (#26)
2. Mount support (#24), left stand (#9) and right stand (#16) by screw M6X12 (#19) and washer 6 (#23)

# Operation

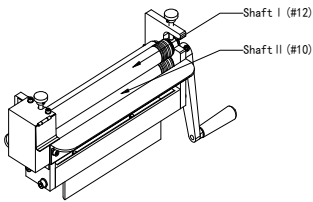


Figure 1-Adjusting the Material Gap

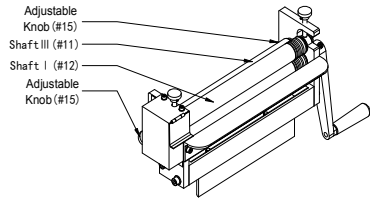


Figure 2-Adjusting the Roll Gap

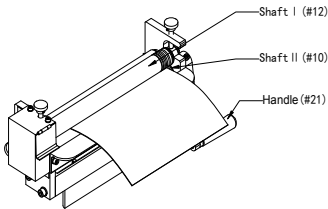


Figure 3-Inserting Material

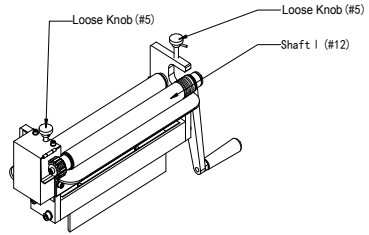


Figure 4-Removing Partial Rolls

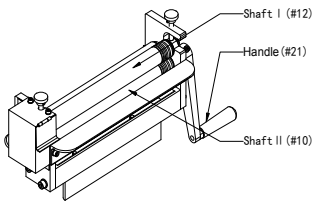


Figure 5-Wire Forming

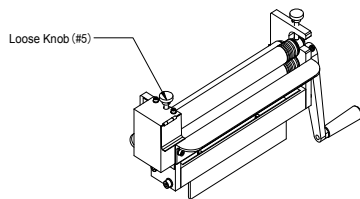
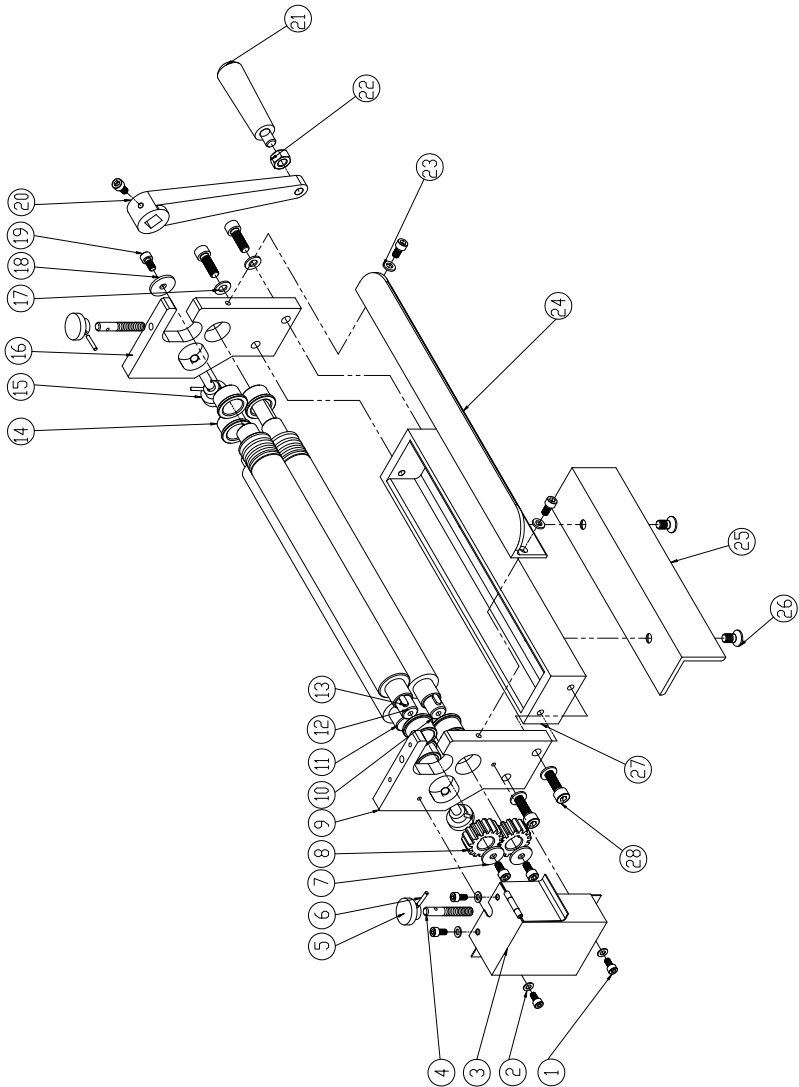


Figure 6-Lubricating the Gears

# Drawing and Packing list



<b>Part #</b>	<b>Description</b>	<b>Qty</b>
1	Screw M5X10	4
2	Washer 5	4
3	Cover	1
4	Screw	4
5	Handle 8x32	2
6	Pin $\varnothing$ 3x18	4
7	Washer 6	2
8	Gear	2
9	Left side plate	1
10	Shaft 1	1
11	Shaft 2	1
12	Shaft 3	1
13	Key 5x12	2
14	Set	6
15	Handle 8x32	2
16	Right side plate	1
17	Washer 8	4
18	Washer	1
19	Screw M6x12	6
20	Handle	1
21	Rotary handle	1
22	Screw M10	1
23	Washer 6	2
24	Support	1
25	supporting structure	1
26	Screw M8X16	2
27	Support base	1
28	Screw M8X25	4

**Note:** This manual is only for your reference. Owing to the continuous improvement of the machine, changes may be made at any time without obligation on notice.