

# **BAR&SECTION PUNCHING SHEAR**

**Modle:PBS-9**



**MANUAL**

## USAGE

This product can be used to cut the low-carbon shaped steel, round-steel, angle-steel, square-steel, strip-steel and sheet metal. It is especially suitable for building site machining repairing. And it is suitable for punching holes in plate made of low-carbon steel, copper, aluminum, plastic etc. With different punches and dies, you can make holes from dia. 3mm to 22mm or the same holes of special shape on plate from 0.5mm to 4.5mm thickness. This machine adopts welded steel plate construction. Light weight allows moving it easily. Operation is easy and simple. So it is especially suitable for the medium or small workshops and home-use.

## Main technical specifications (mm):

<b>Model</b>	PBS-9			
Round steel	22mm			
Square Steel	20mm			
Flat steel	90x14mm			
Angle steel	60x7mm			
Plate steel	10mm			
T-steel	60x7mm			
Max. punching capacity	8.0mm			
Throat depth	160mm			
Punch mold & die	55x34x18mm			
Body packing size	99x40x66cm			
Handle packing size	124x3.3x7.4cm			
N.W/G.W	99/115kg			
<b>Thickness</b>	0.5-1.5	1.5-2.5	2.5-3.5	3.5-5.0
<b>Material</b>				
Aluminium	2.5-20	3.0-20	5.0-20	8.0-20
Copper	3.0-30	5.0-20	6.0-20	8.0-20
A3 carbon steel	6.0-30	8.0-18	10-17	----

## NOTE

1. Before using this machine, read this manual carefully at first. Check the fastening screws of every part and see if they are loose, if loose, please tighten them.
2. Lubricate the sliding place usually.
3. Before shearing, the work-piece must be fastened in order to avoid harming.
4. Be sure not to put finger under the blade.
5. Keep ones balance, far away from the work-piece, in order to avoid harming.
6. Be care for the handle, in order to avoid harming. The strength of the handle is

different because the position of the spring is different.

7. Keep children far away from the machine.

### **OPERATION**

#### **I. CUT STEEL PLATE, STRIP STEEL**

1. Raise handle (46), make upper blade and down blade keeping a certain distance.
2. Put the steel plate on the down blade (33), ensure the suitable size, then tighten the handle (8), fix the work-piece with the plate (21), turn the handle (4) downward strongly.

#### **II. CUT ROUND AND SQUARE STEEL**

Raise the handle (47), put the round (square) steel into the round (square) hole of the blade, and into the round (square) hole of the support plate (3), turn the handle (47) downward strongly.

#### **III. CUT ANGLE AND T-STEEL**

Raise the handle (47) put the work-piece into the groove (its shape is the same as the work-piece) and into the groove of support plate (3).

- IV. There are two holes in the connecting plate (6), operator can select anyone according to the different position and strength.

### **MAINTAIN**

#### **1. Lubrication**

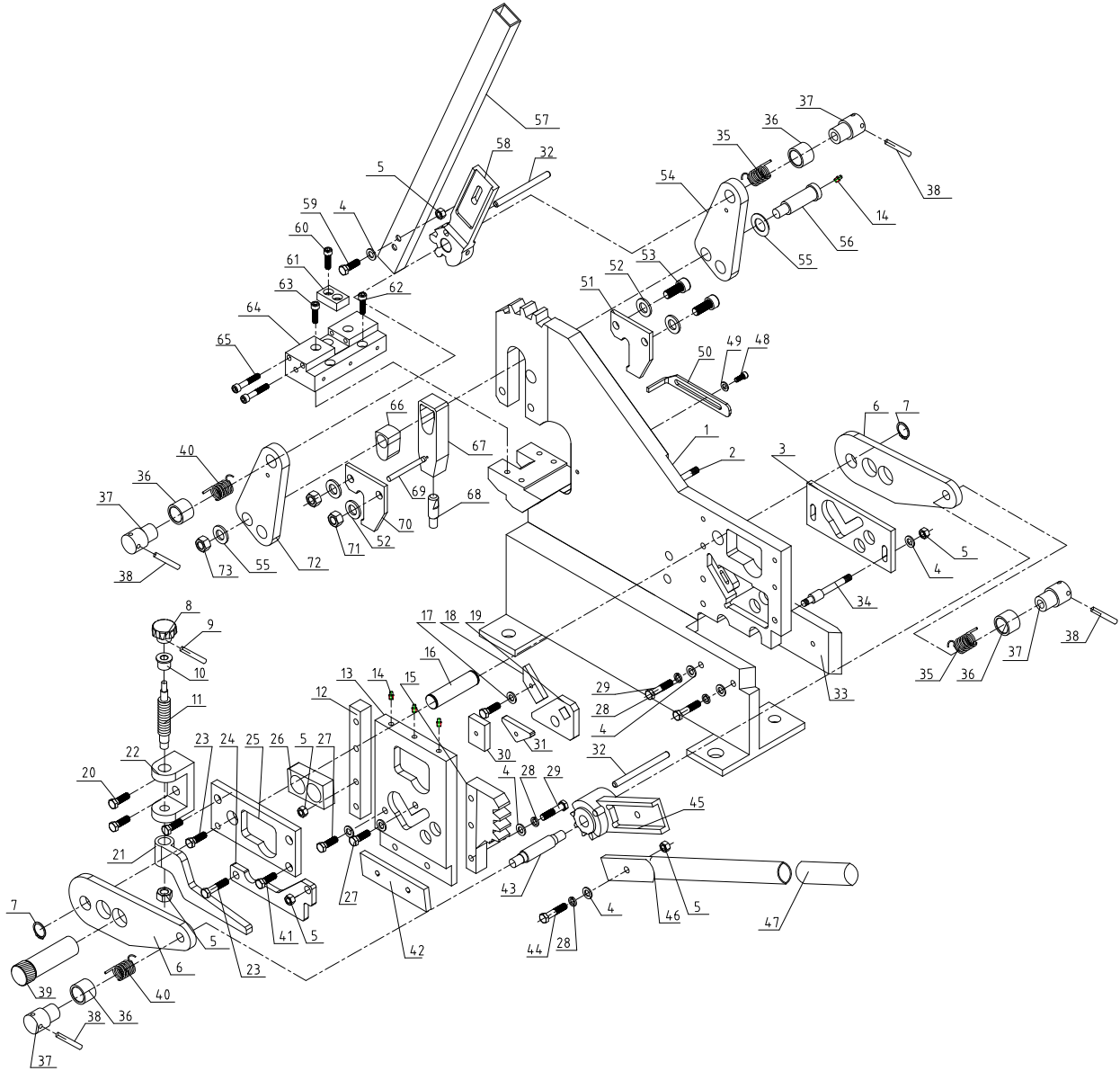
Before using, apply some grease to the teeth, pour lubricating oil into the oil cup (14).

2. If not using the machine long time, smear blades with antirust oil.

## PARTS LIST

Item	Description	Qty	Item	Description	Qty
1	Body	1	38	Spring Pin	4
2	Bolt	1	39	Supporting Shaft	1
3	Support Plate	1	40	Left Spring	2
4	Washer	9	41	Screw	1
5	Nut	7	42	Down Blade	1
6	Connecting Plate	2	43	Shaft	1
7	Ring	2	44	Bolt	1
8	Handle	1	45	Arm	1
9	Screw	1	46	Handle	1
10	Sleeve	1	47	Handle Sleeve	1
11	Screw	1	48	Bolt	1
12	Bar	1	49	Washer	1
13	Plate	1	50	bar	1
14	Blade Base	4	51	Block	1
15	Oil Cup	1	52	Washer	4
16	Tooth Plate	1	53	Bolt	2
17	Shaft	3	54	Supporting plate	1
18	Washer	1	55	Washer	2
19	Moving Blade	1	56	Small shaft	2
20	Screw	2	57	Strength bar	1
21	Press Plate	1	58	Rack arm support	1
22	Support	1	59	Bolt	2
23	Bolt	2	60	Bolt	1
24	Shield	1	61	Punching die	1
25	Fixed Plate	1	62	Bolt	2
26	Moving Piece	1	63	Bolt	2
27	Bolt	3	64	Punching die set	1
28	Spring Washer	5	65	Bolt	4
29	Bolt	4	66	Punch	1
30	Adjustable Down Blade	1	67	Slid set	1
31	V-Upper Blade	1	68	Punch	1
32	Small Shaft	2	69	Pin	1
33	Upper Blade	1	70	Block	1
34	Bolt	1	71	Nut M16	2
35	Right Spring	2	72	Supporting plate	1
36	Sleeve	4	73	Nut M20	3
37	Screw Sleeve	4			

# ASSEMBLY DRAWING



**Note:** This manual is only for your reference. Owing to the continuous improvement of the machine, changes may be made at any time without obligation on notice.