

ADDITIONS 2023

SPRING | SUMMER







Additions 2023

SPRING | SUMMER

Additions 2023 is here to remind us that you can also make statements with muted colours, interact with natural materials and go 'funky' with energising prints. Where we had a blast with colour last summer, this collection shifts the focus to form and design. It complements nicely and blends effortlessly into the interior of today, but brings depth regardless.

This collection you will find many naturals thanks to the pure materials we like working with, think wool, teak wood and jute. However, ceramics, velvet fabrics and glassware also gained an easy touch. Because we love layering an interior, unexpected shapes and colours stand out even more alongside a muted counterpart, bringing together all the finishing touches.

While designing this collection, we were looking for a bit of roughness, call it rebellious. The extremely high-pile rugs, raw chrome materials and at times crazy designs are our answer to that. Besides the fun retro vibes brought by the '70s, this season we fell in love with the rock and roll period of the '80s. It's exactly what we were looking for - the nonchalance, quirkiness and a bit of funk.

Explore the entire Additions 2023 and uncover a deeper layer. You will discover how an interior can be adaptable and evolve with you over the years.



BATH MAT RETRO SWIRL
TTK3105 | 90x120 cm



BATH MAT MONOCHROME
TTK3106 | 75x120 cm



BATH MAT NATURAL WAVES
TTK3107 | Diameter 120 cm



CERAMIC RIBBLE VASE CHROME
ACE7194 | 14,3x14,3x29,5 cm



EARTHENWARE SIDE TABLE M BLACK | MTA2875 | ALUMINIUM SCULPTURE HEAVY BLACK | AOA0914



70s

ceramics & glassware

Sometimes showing guts is revising a successful design and attempting to improve on it. This season, we have added a new variation to our 70s collection. Meet 70s glassware mugs and glasses, as we believe every strong component needs a counterpart. By playing with these contrasts, something new happens, it takes on an extra layer and gives you possibilities you didn't know you needed.



70S CERAMICS: SAUCERS BIG SUR (SET OF 4)
ACE7202 | 13x13x0,5 cm



70S GLASSWARE: TEA GLASSES
AMBER BROWN (SET OF 4)
AGL4507 | 8,8x8,8x13,5 cm

70S GLASSWARE: COFFEE CUPS
AMBER BROWN (SET OF 4)
AGL4503 | 7,7x11x8,3 cm

70S GLASSWARE: SAUCERS
AMBER BROWN (SET OF 4)
AGL4505 | 13x13x0,7 cm



70S GLASSWARE: TEA GLASSES
MUD BROWN (SET OF 4)
AGL4506 | 8,8x8,8x13,5 cm

70S GLASSWARE: COFFEE CUPS
MUD BROWN (SET OF 4)
AGL4502 | 7,7x11x8,3 cm

70S GLASSWARE: SAUCERS
MUD BROWN (SET OF 4)
AGL4504 | 13x13x0,7 cm



COTTON NAPKINS FLORAL VINTAGE (SET OF 2)
TOT4048 | 30x30 cm



COTTON NAPKINS FLORAL BURGUNDY (SET OF 2)
TOT4049 | 30x30 cm



COTTON NAPKINS MEDITERRANEAN OLIVE (SET OF 2)
TOT4050 | 30x30 cm



COTTON NAPKINS MEDITERRANEAN TANGERINE (SET OF 2)
TOT4051 | 30x30 cm



COTTON NAPKINS STRIPED TANGERINE (SET OF 2)
TOT4052 | 30x30 cm



COTTON NAPKINS STRIPED BURGUNDY (SET OF 2)
TOT4053 | 30x30 cm



“IN ADDITION TO DARING AND ENRICHING CONTRASTS, THIS COLLECTION IS FOCUSING ON EASY LIVING.”





OUTDOOR SOFA TEAK NATURAL
MOU5016 | 227x93,5x67 cm



OUTDOOR SOFA TEAK RETRO
MOU5017 | 227x93,5x67 cm



OUTDOOR SOFA TEAK BOTANICAL
MOU5018 | 227x93,5x67 cm



OUTDOOR SOFA TEAK NATURAL
MOU5019 | 193,5x80x67 cm



OUTDOOR SOFA TEAK RETRO
MOU5020 | 193,5x80x67 cm



OUTDOOR SOFA TEAK BOTANICAL
MOU5021 | 193,5x80x67 cm







Bring a luxurious touch to your backyard with the generous raffia patio umbrella. With its wide size, you will not only create plenty of refreshing shade spots, but also add a delightful tropical vibe. Includes a strong protective cover to allow it to stay outdoors.



RAFFIA PATIO UMBRELLA
MOU5022 | Diameter 300 cm | Height 270 cm



ALUMINIUM SCULPTURE HEAVY BLACK | AQA0914 | BATH MAT RETRO SWIRL | TTK3105 | BATH TOWEL 1976 | TBH5002

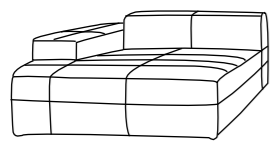


70S GLASSWARE COFFEE CUPS MUD BROWN (SET OF 4) | AGL4502 | 70S GLASSWARE COFFEE CUPS AMBER BROWN (SET OF 4) | AGL4503 | 70S GLASSWARE SAUCERS AMBER BROWN (SET OF 4) | AGL4505

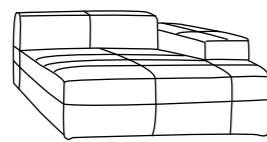




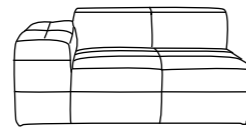
Contrasts don't have to be loud, instead they create balance and harmony. That's what you will experience with our new Brut sofa. With its brutalist shape, playful height and generous seating areas, it lends body and strength to any space. The smooth curves give it an informal seat, while the low arm and back provide a more open space for optimal relaxation and comfort. The two elements complement one another in function and personality, interacting with the numerous colour and material options to form a soothing combination to suit your space.



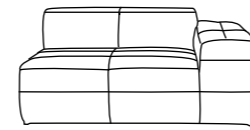
Brut sofa element divan left
Seating depth 107 cm
Seating height 44 cm



Brut sofa element divan right
Seating depth 107 cm
Seating height 44 cm



Brut sofa element left
Seating depth 64 cm
Seating height 44 cm



Brut sofa element right
Seating depth 64 cm
Seating height 44 cm

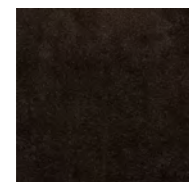


BRUT SOFA ELEMENT DIVAN LEFT/RIGHT
MZM5413-14 | 154x147x71 cm

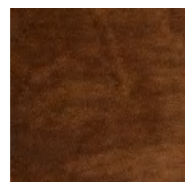


BRUT SOFA ELEMENT LEFT/RIGHT
MZM5415-16 | 154x105x71 cm

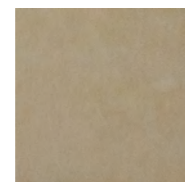
These fabrics are available for our Brut sofa. See our product specification sheet for all fabric possibilities.



Royal velvet
espresso



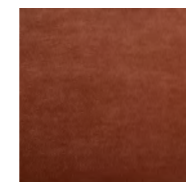
Royal velvet
caramel



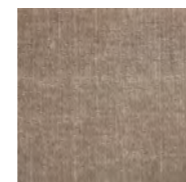
Royal velvet
cream



Royal velvet
green



Royal velvet
magnolia



Linen blend taupe



There are many ways of seeing.



- WAANZIN & VERVREINDING
- JAPAN
- De Oranjemythe
- DE TIJANEN



DESERT JUTE RUG
TTK3099 | 150x240 cm



FLUFFY RUG SOFT PINK
TTK3100 | 200x300 cm



FLUFFY ROUND RUG CARAMEL
TTK3101 | Diameter 200 cm



FLUFFY ROUND RUG SAGE
TTK3102 | Diameter 150 cm



CHEST OF 6 DRAWERS MOCHA | MKA1986 | CUSHION CANDYFLOSS | TKU2146 | CUSHION SPICY GINGER | TKU2150
PHOTO ART SICILY XL BY TIM BUITING | AWD8962 | WOOLEN CUSHION EASY | TKU2166



CHUBBY CHROME MIRROR | AWD8957



Crafted in soft, absorbent cotton, the ethnic decorated bath towels are designed to enlighten your bathroom space. The generously-sized towels of 650 g/m² hotel quality, are available in five different jacquard woven patterns with hand knotted fringes. Perfect for use in the bathroom, at the beach or poolside.



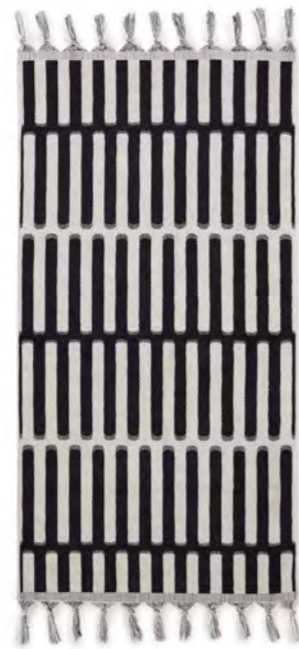
BATH TOWEL 1965
TBH5001 | 70x140 cm



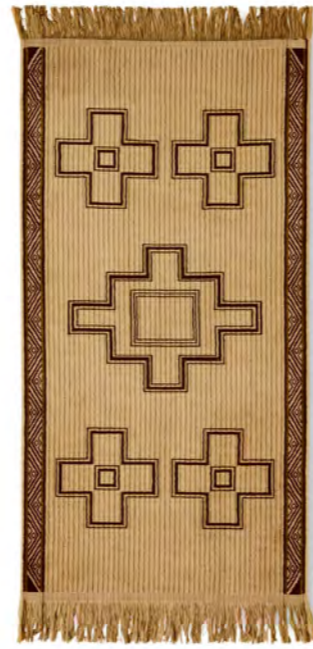
BATH TOWEL 1976
TBH5002 | 70x140 cm



BATH TOWEL 1984
TBH5003 | 70x140 cm



BATH TOWEL 1991
TBH5004 | 70x140 cm



BATH TOWEL 2000
TBH5005 | 70x140 cm



**“CONTRASTS DON’T HAVE
TO BE LOUD, INSTEAD THEY
CREATE BALANCE AND
HARMONY.”**





ALUMINIUM SCULPTURE HEAVY BLACK
AOA0914 | 31x16x80 cm



CERAMIC SCULPTURE REACTIVE BROWN
AOA0915 | 28,5x7,5x57 cm



HAND CARVED WOODEN SCULPTURE
AOA0916 | 25x9x71 cm



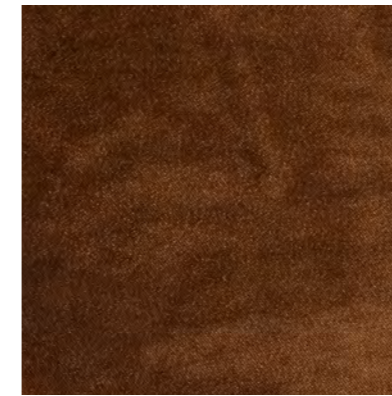
CHEST OF 6 DRAWERS CAMEL
MKA1999 | 63x33x97 cm







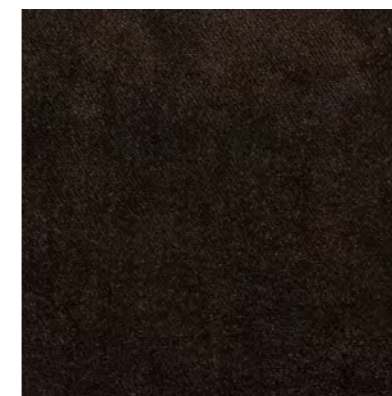
WAFFER CREAM



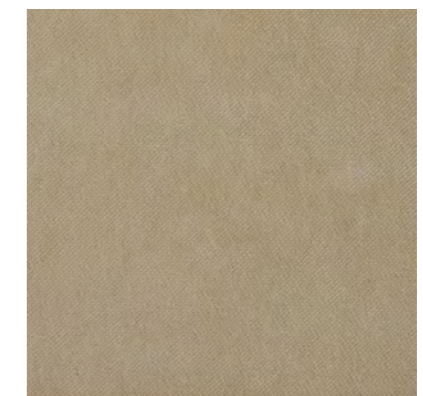
ROYAL VELVET CARAMEL



SNEAK BEIGE



ROYAL VELVET ESPRESSO



ROYAL VELVET CREAM



WOOLEN CUSHION BLACK AND WHITE STATEMENT
TKU2165 | 50x50 cm



WOOLEN CUSHION EASY
TKU2166 | 60x40 cm



WOOLEN BOLSTER CUSHION BLACK AND WHITE STATEMENT
TKU2167 | 13x13x50 cm



CERAMIC VASE ORGANIC CAPPUCCINO S
ACE7196 | 16x12,5x19 cm



CERAMIC VASE ORGANIC ESPRESSO L
ACE7197 | 12x19,5x25 cm



CERAMIC VASE ORGANIC CREAM M
ACE7198 | 17x13x29cm



PHOTO ART AMALFI XL BY TIM BUITING | AWD8962 | HAND CARVED WOODEN SCULPTURE | AOA0916 | LOUNGE COFFEE PLATEAU XL CAMEL | MTA2872
CLUB COUCH ROYAL VELVET ESPRESSO | MZM5394 | CYLINDER LAMP SHADE FLORAL | VLK2038 | GRAND TABLE LAMP REACTIVE BROWN | VOL5112



FLUFFY RUG SOFT PINK | TTK3100





MIRROR SMOKEY BROWN | AWD8961 | CERAMIC VASE ORGANIC CREAM M | ACE7198 | CHEST OF 6 DRAWERS MOCHA | MKA1986



CHROME LOUNGE ARMCHAIR CANVAS BROWN
MZM5272 | 80x78x86 cm
Seating depth 50 cm | Seating height 52 cm



CHROME LOUNGE ARMCHAIR VELVET BROWN
MZM5273 | 80x78x86 cm
Seating depth 50 cm | Seating height 52 cm



THE EMERALDS: GLASS DESSERT BOWLS GREEN | AGL4488 | THE EMERALDS: WINE GLASSES TALL LIME GREEN | AGL4470
THE EMERALDS: CERAMIC PLATE RECTANGULAR GREEN (SET OF 2) | ACE7011



MIRROR SMOKEY BROWN
AWD8961 | 90x1,5x170 cm



LAMP SHADE VINTAGE FLOWERS
VLK2040 | 52x52x46 cm



GRAND TABLE LAMP REACTIVE BROWN
VOL5112 | 23,5x23,5x60 cm



GRAND TABLE LAMP GLAZED ORANGE
VOL5113 | 33x23x60 cm



For all possibilities and corresponding prices, please see our lighting overview sheets



CONE FLOOR LAMP BASE XL BROWN
VOL5110 | 21,5x21,5x88,5 cm



CYLINDER LAMP SHADE SWIRL
VLK2037 | 33x33x82 cm



CYLINDER LAMP SHADE FLORAL
VLK2038 | 28,5x28,5x68 cm



CERAMIC VASE CAMEL S
ACE7201 | 17,5x17,5x26 cm



CERAMIC VASE CAPPUCCINO M
ACE7200 | 21x21x32 cm



CERAMIC VASE ESPRESSO L
ACE7199 | 21x21x42,5 cm



CHEST OF 6 DRAWERS MOCHA | MKA1986 | CHEST OF 8 DRAWERS CREAM | MKA1988 | CHEST OF 6 DRAWERS CAMEL | MKA1999



ALUMINIUM SCULPTURE HEAVY BLACK | AOA0914 | CERAMIC SCULPTURE REACTIVE BROWN | VOL0915 | HAND CARVED WOODEN SCULPTURE | AOA0916 | MIRROR BLOCK COFFEE TABLE OLIVE | MTA2861

DORIS for HKLIVING

A new series of frisky cushions, as you have come to expect from Doris. The passionate vintage fashion hunter has a radar for quirky prints and unconventional designs. Where most would see an outdated piece of curtain, dress or blouse, she recognises potential. However, while she is typically bold with colour, this time the statement comes from the sophisticated mix of prints, all within a monochrome colour spectrum. An exciting contrast, gained from an endless stream of inspiration she draws from fashion and design.





Kim Wijte
 (Founder of DORIS VINTAGE):
 “I found this one at a vintage market near Vanves in Paris. A market vendor was just displaying his merchandise and it was a true gift, because upon unpacking, all those bags were filled with original Japanese kimonos with the most amazing prints! Including this beautiful one in coral pink and brown. I knew immediately; this one had to be in the new collection!”

The Doris for HKliving range consists of eight versatile decorative cushions for your sofa or chair. The prints are sourced from carefully found thrifted fabrics, thanks to vintage fashion hunter Doris herself. Finished in a soft fabric and signature logo label, filled with high-quality micro-fibers for a luxurious feel.



DORIS FOR HKLIVING CUSHION ART DECO
 TKU2168 | 60x40 cm



DORIS FOR HKLIVING CUSHION ORNAMENTAL
 TKU2169 | 60x40 cm



DORIS FOR HKLIVING CUSHION VINTAGE
 TKU2170 | 60x40 cm



DORIS FOR HKLIVING CUSHION ECLECTIC
 TKU2171 | 60x40 cm



‘The passionate vintage fashion hunter has a radar for quirky prints and unconventional designs.’



DORIS FOR HKLIVING CUSHION RUSTIC
TKU2172 | 55x30 cm



DORIS FOR HKLIVING CUSHION FLORAL
TKU2173 | 55x30 cm



DORIS FOR HKLIVING CUSHION NOSTALGIC
TKU2174 | 55x30 cm



DORIS FOR HKLIVING CUSHION ROMANCE
TKU2175 | 55x30 cm



Kim Wijte:
“I have a dedicated closet with vintage clothes I found over the years. Some I wear myself, save for shoots or are too special to sell, because once it’s gone, it’s really gone. With vintage, you often only have one copy, so when we put this collection together, this print was a must!”

“WHILE DESIGNING THIS COLLECTION, WE WERE LOOKING FOR A BIT OF ROUGHNESS, CALL IT REBELLIOUS.”





BROWN CHROME GLASS VASE
AGL4501 | 13,5x13,5x20 cm



GLASS VASE MONOCHROME
AGL4500 | 17,5x17,5x26 cm



EARTHENWARE SIDE TABLE M BLACK
MTA2875 | 40x40x43 cm



EARTHENWARE SIDE TABLE L CREAM
MTA2876 | 46x46x37 cm



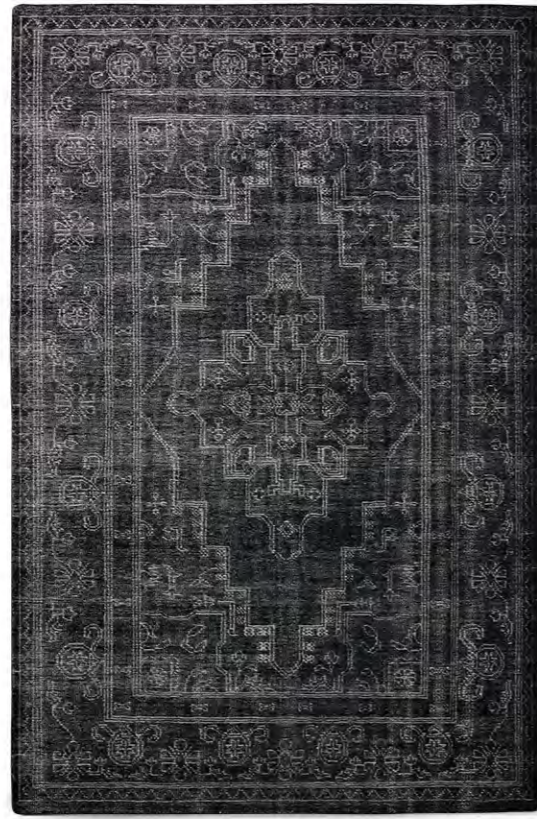
ACRYLIC CABINETS 160 CM CLEAR | MKA1991



WOOLEN CUSHION BLACK AND WHITE STATEMENT | TKU2165
WOOLEN BOLSTER CUSHION BLACK AND WHITE STATEMENT | TKU2167 | DORIS FOR HKLIVING CUSHION VINTAGE | TKU2170



DIAMOND JUTE RUG
TTK3103 | 150x240 cm



HAND KNOTTED WOOLEN RUG MONOCHROME
TTK3104 | 200x300 cm



BY TIM BUITING

Driven by a passion for anything aesthetic, raw and pure, Tim started his career in sweaty clubs and at vibrant festivals. His wide range of work consists portraits, travel and event stories both commercial and independent work. Over time and through experience, Tim developed a recognizable, aesthetic and intimate photography style. We are honoured to present his work in our collection.





TIM BUITING

“Shot on film while driving along the Amalfi coast in Italy. During our road trip, we discovered a relaxing beach bar near the pretty village of Positano, we had to go there and as we walked down the narrow staircase, I shot this view of characteristic orange umbrellas and sunbeds. I still remember the crystal-clear water and the breeze of summer.”

PHOTO ART AMALFI L/XL BY TIM BUITING

AWD8963 | 105x3x145 cm

AWD8962 | 125x3x175 cm

TIM BUITING

“Shot just before the pandemic broke out in 2019, it turned out to be the last Amsterdam Dance Event for the next few years. Earlier, this shot had not occurred to me at all, until I sat at home during the lockdown and rediscovered it. It suddenly stood out in particular. The photo contains laughter, chaos and the intimacy between two people - everything we all so longed for at the time.”

PHOTO ART FESTIVAL L/XL BY TIM BUITING

AWD8965 | 105x3x145 cm

AWD8964 | 125x3x175 cm





TIM BUITING

“This image is giving me nostalgic feelings and looks to me as if it was shot sometime in the 1990s. I shot this photo on film in the summer of 2022 while on a holiday in Sicily. After a lovely afternoon on the water, we decided to make a stop at the famous Tonnara di Scopello. Besides us, there were many more boats anchoring here for a while, including this striking Penelope tour boat. This one immediately caught my eye and with the beautiful low sunlight, I managed to shoot this picture.”

PHOTO ART SICILY L/ XL BY TIM BUITING

AWD8967 | 105x3x145 cm

AWD8966 | 125x3x175 cm