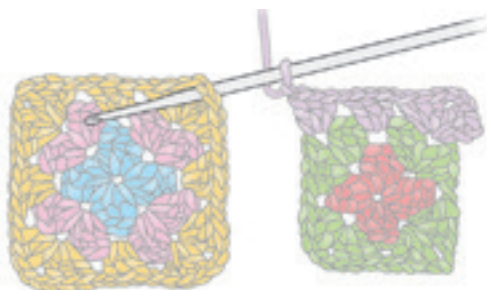
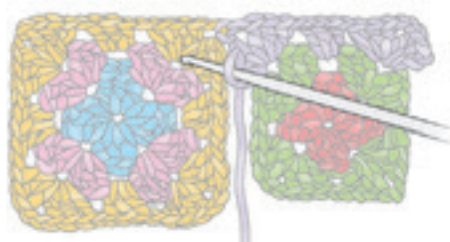


Join-as-you-go method

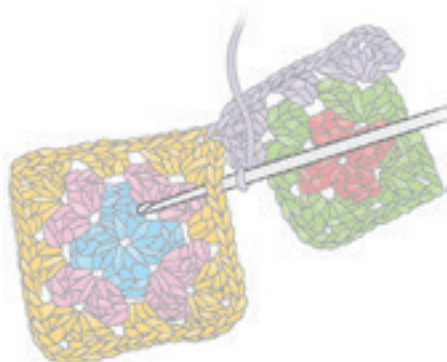
Finish one square completely following the instructions in the pattern – this will be the 'starting square' in the following steps. Work the next square until you reach the last round – this square is referred to as the 'current square' in the following steps.



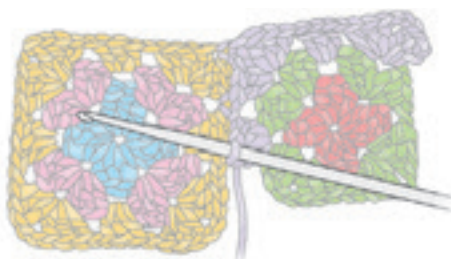
1. Work the first side of the current square including the first corner grouping (first set of 3htr or 3tr), then instead of making ch2 for the corner sp, insert the hook into the corner sp of the starting square from underneath as shown.



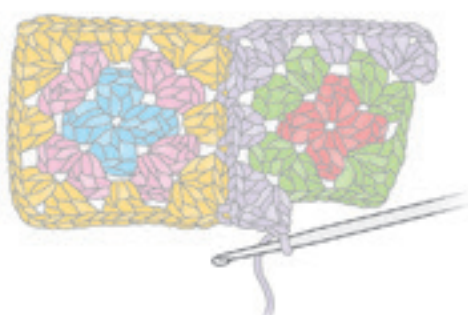
2. 1dc into the corner sp of the starting square (counts as first of 2-ch for the corner sp), ch1, then work the second 3htr or 3tr grouping into the corner sp of the current square as usual.



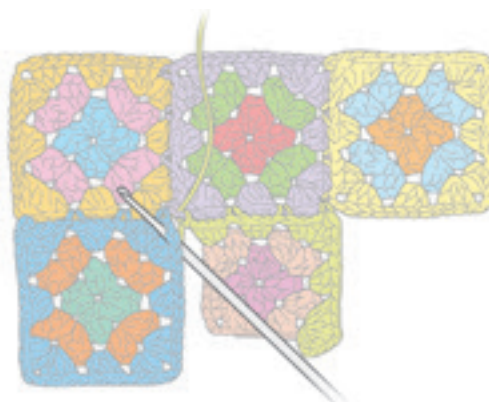
3. To continue joining the squares together, instead of ch1, work 1dc into the next side sp of the starting square.



4. Work 3htr or 3tr in the next side sp of the current square. Continue replacing each ch-1 at the sides of the current square with 1dc into the next side sp of the starting square, and replacing the first of the ch-2 at the corner sp of the current square with 1dc into the corner sp of the starting square.



5. When the current square is joined to the starting square along one side, continue around and finish the final round of the current square as normal.



6. When joining a current square to two previous squares, replace both corner ch of the current square with 1dc into each adjoining square.