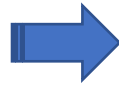


AIO Assembly Instructions

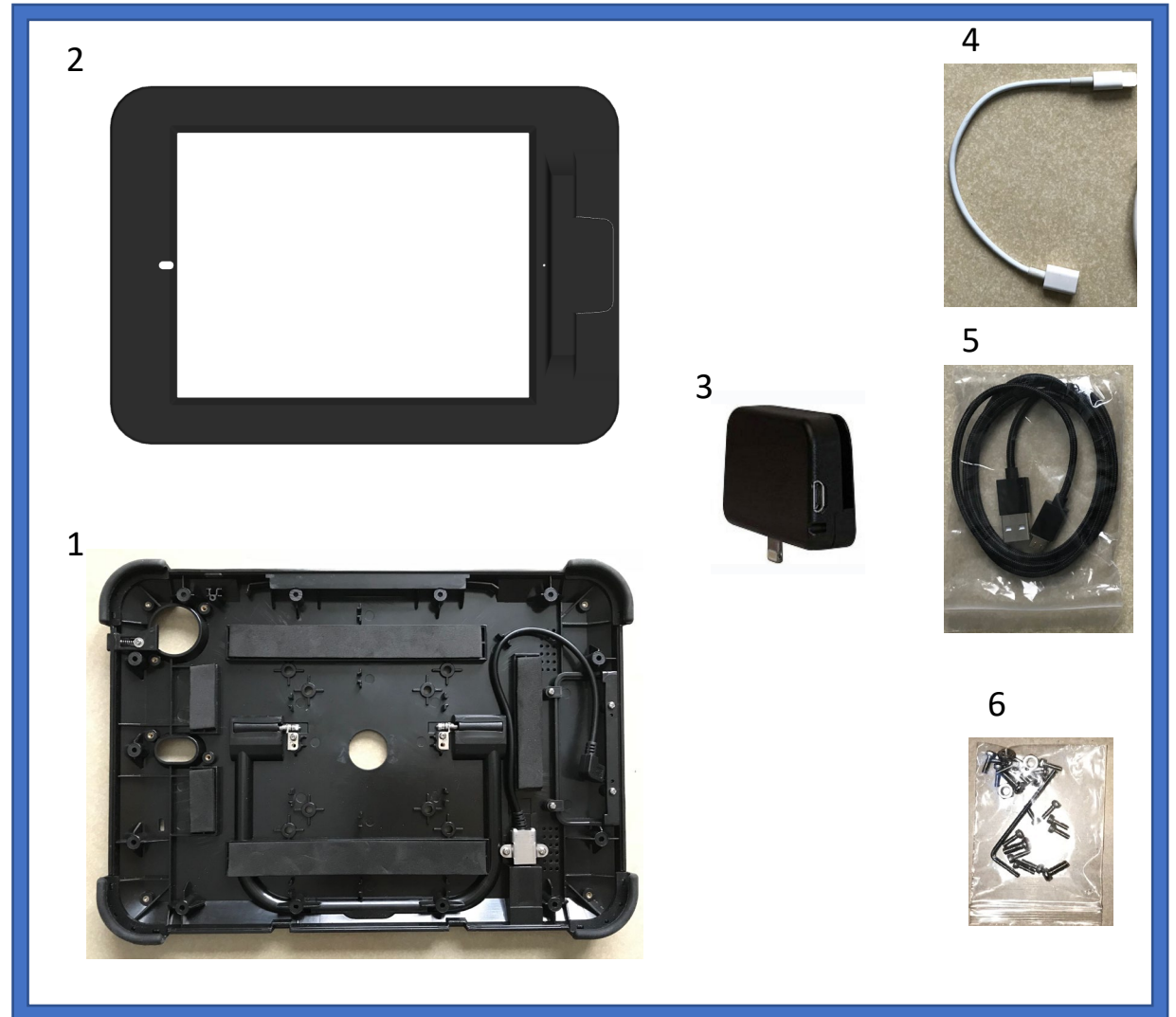


Packing list

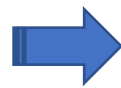


1. Enclosure Base
2. iPad 10.5" / 10.2" cover face
3. Credit card reader
4. USB to iPad cable *
5. Charging cable
6. Hardware

* included if no credit card reader



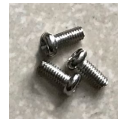
Hardware list



2 M2.5 10mm



4 M4 screws and nuts
To attach Foldable card holder



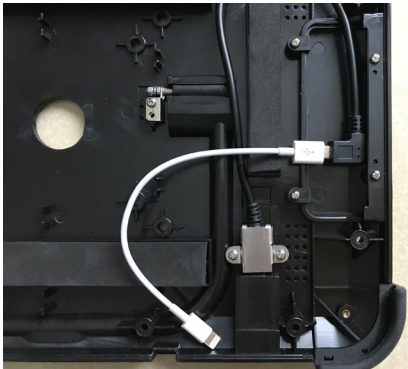
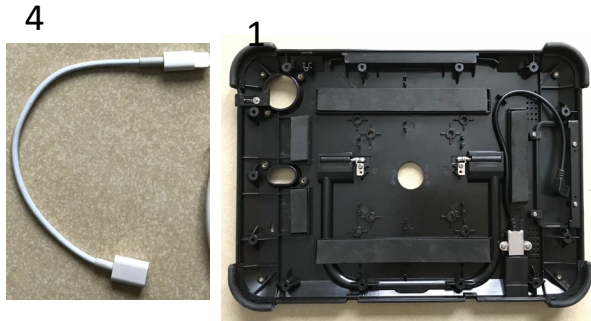
3 M2.5 6mm



13 M2.5 6mm Hex head
Align Key

iPad installation without credit card reader

1. Connect part 4 to USB cable in part 1



2. Connect part 4 to iPad
3. Place iPad on part 1



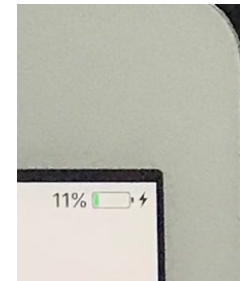
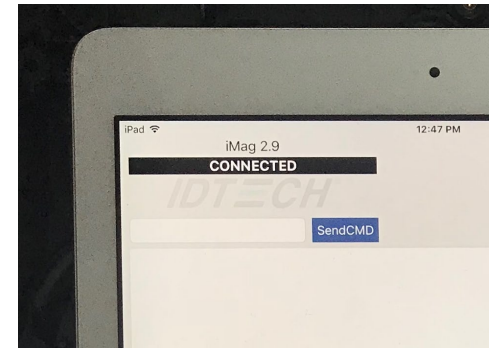
Connect USB charging cable

Connect charging cable part 5 to USB port in part 1
Remove charging cable by tilting it
Magnetic connector should be left in charging port



Connecting credit card reader

- Connect Credit card reader to iPad
- Connect charging cable to original iPad charging block
- Open iDTECH test app
- Make sure it shows connected message and iPad is charging



iPad installation (A)

- Install iPad Cover face part 2
- Slide it with a slight angle under top two rubber corners
- Using two fingers gently squeeze the rubber corners and push the face under both bottom corners



iPad installation (B)

- Flip assembled unit
- Insert 13 M2.5 hex head screws into part 1
- Gently screw 13 screws using provided Align key



Foldable card holder

- Use 4 M4 screws to attach optional foldable card holder to part 1

