

## Maintenance

Your JUVO watch winder does not require any special maintenance. We recommend you clean it regularly with the microfibre cloth provided.

## Troubleshooting

If your JUVO watch winder stops functioning, or no longer functions normally, check the following points.

- Make sure the power switch is NOT in the off position.
- If the watch winder still fails to function, unplug the adaptor from the adaptor port to reset the watch winder. And then insert the adaptor into the adaptor port again.

## Safety Warnings

- Only use the adaptor supplied with this watch winder.
- **ALWAYS** turn off the power before inserting or taking out watches.
- Unplug the adaptor when the watch winder is not being used.
- For watch winders that use both adaptors and batteries, always remove the batteries when using the adaptor.
- **DO NOT** rotate the winder turntable at any time.
- **DO NOT** place the watch winder in direct sunlight or in environments that are either damp or dusty.

## JUVO Guarantee Terms and Conditions

Guarantee validation.

- Your JUVO watch winder is guaranteed for 2 years, from the date of purchase, against any manufacturing defect.
- The guarantee is only applicable on presentation of a valid valid proof of purchase.

The guarantee excludes the following.

- Damage resulting from normal use eg. scratches, stains, marks and discolouration.
- Damage resulting from improper or inappropriate use of the product, such as non-respect of battery polarity, mistreatment of the case, shocks, breakage, etc.
- Damage resulting from use of the winder in an unsuitable environment, such as damp places, exposure to water, vibrations, sources of excessive heat, etc.



JUVO™

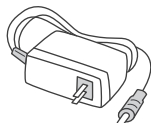
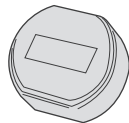
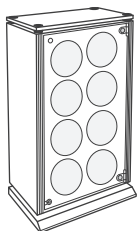
## A8 Watch Winder

Product Manual

Thank you for purchasing this JUVO Watch Winder, please take a few minutes to read through the Quick Start Guide to ensure correct operation. You can view the product manual, instructional video, and tips on JUVO website: [www.juvoluxury.com](http://www.juvoluxury.com)

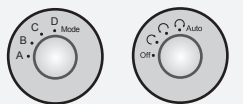
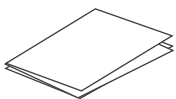
## Box contents

- Watch Winder x 1
- Watch Pillow x 8
- Power Adaptor x 1



## Pouch contents

- Product Manual & Guarantee Card x 1
- Microfibre Cloth x 1
- Pair of White Gloves x 1
- Key x 2



TPD switch Mode switch

- OFF
- ⌚ Clockwise
- ⌚ Anti-clockwise
- ⌚ Bi-directional



LED light switch with 4 settings

- OFF
- Low
- Medium
- High

Locking/unlocking the winder door

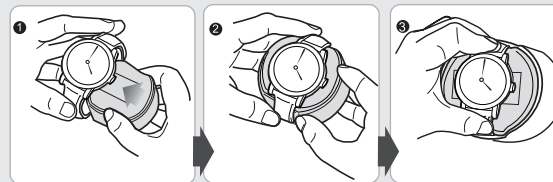


Glass door

Adaptor port

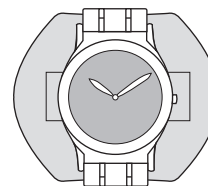
## Operations for Use

- Insert the adaptor into the adaptor port and plug it into the electrical outlet.
- Open the glass door and carefully pull out the watch pillow using your forefinger and thumb.
- Place the watch on the watch pillow.
- Place the watch pillow back in the winder.
- Close the cover.
- To start operation, please use the TPD switch to set the TPD (Turns Per Day) and use the mode switch to set the rotating direction you require
- Turn the LED light switch on back of the winder to desired light brightness – off, low, medium and high.

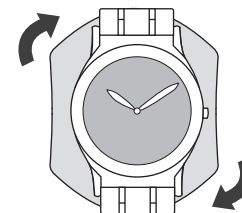


**NOTE: We do NOT recommend watches weighing over 350 grams for this winder. We also do NOT recommend metal bands longer than 235 mm in length (with metal bands buckled and including the watch dial diameter) as it may prevent proper operation of the winder.**

**Watch Pillow: By turning the watch pillow 90 degree**



For Average Wrist



For Oversize Wrist

## Product Specifications

<b>Power</b>	Input: AC/100-240V, 50-60Hz; Output: DC/12V 1.5A
<b>Features</b>	<p>TPD (Turns Per Day)</p> <p>Mode A: Revolves for 7 minutes – stops for 103 minutes then repeats, 650TPD.</p> <p>Mode B: Revolves for 7 minutes – stops for 73 minutes then repeats, 900TPD.</p> <p>Mode C: Revolves for 7 minutes – stops for 53 minutes then repeats, 1200TPD.</p> <p>Mode D: Revolves for 7 minutes – stops for 41 minutes then repeats, 1500TPD.</p>
<b>Size</b>	323 x 220 x 540 mm (L x W x H)
<b>Weight</b>	12.6kg (without adaptor)
<b>Temperature</b>	Operate between 5°C ~ 40°C
<b>Accessory</b>	AC Adaptor