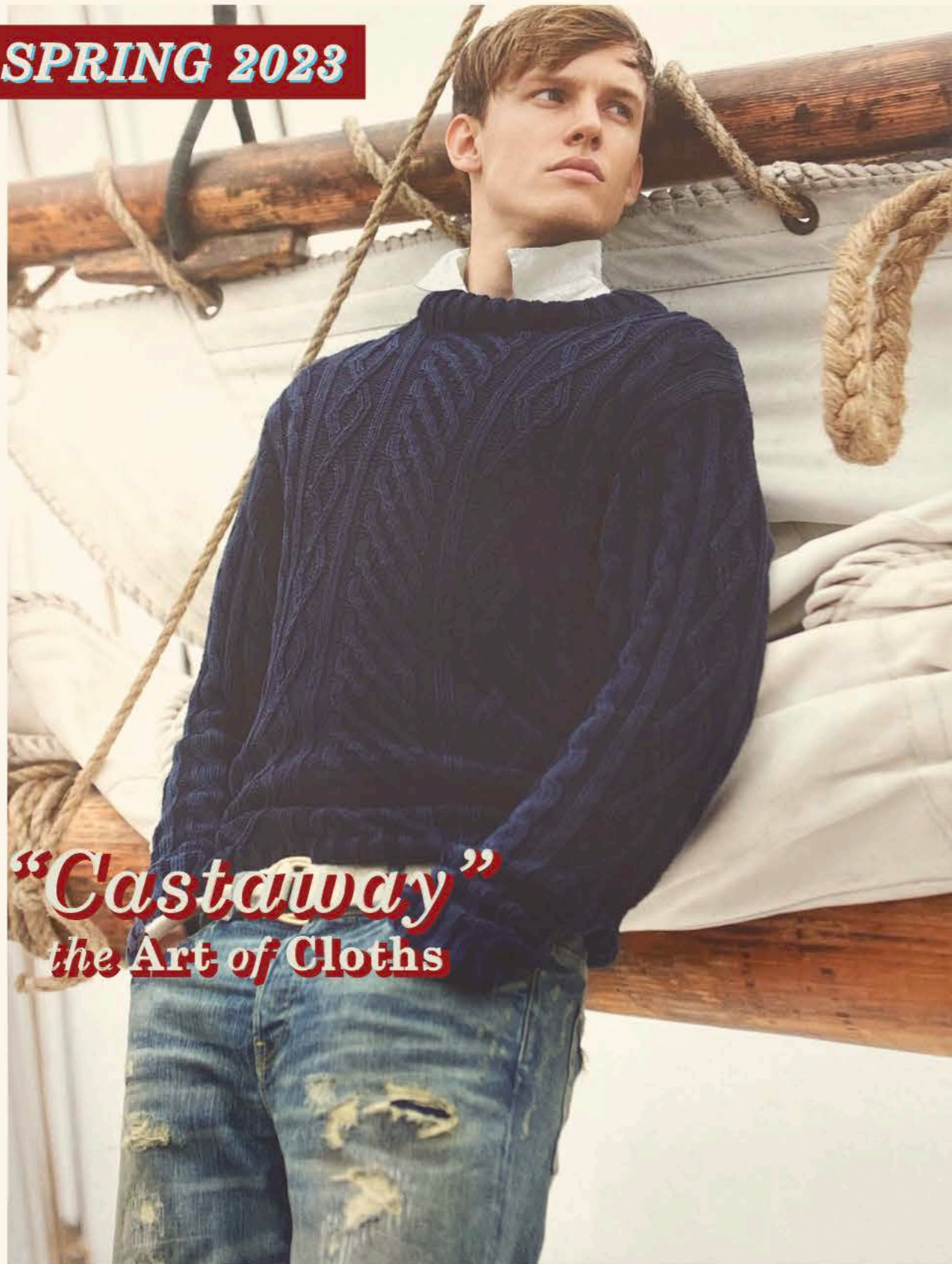


SPRING 2023



“Castaway”
the Art of Cloths

Spring / Summer 2023



A fresh look at the style of the Blue Bloods. An escape from the norm, still classic in essence. Well informed, well read, and well traveled to all four corners of the world searching for the life's knowledge and hidden treasures.

Being active isn't just about playing sports. It's about playing the field, broadening the circle of friends, returning to reinforce family ties again, establishing new bonds, keeping the old ones, while projecting downtown edge & uptown good life...

Escape from the norm, put a new twist on old favorites. Join the Island regatta, a sailing trip in the open sea lanes of Northeast, spend the nights in the shades of palm trees, and breath in the scent of jasmine in the night air adjacent to the beach. Place a couple of well-timed calls to the office, and spend the afternoons and evenings listening to the bracing clicks of the ice on ice.

Life is good, enjoy it! You are entitled.

Gilded Age

EST. 2005

SPRING 2023, **No 34** SEASON
GILDED AGE - MENS COLLECTION

Spring / Summer 2023

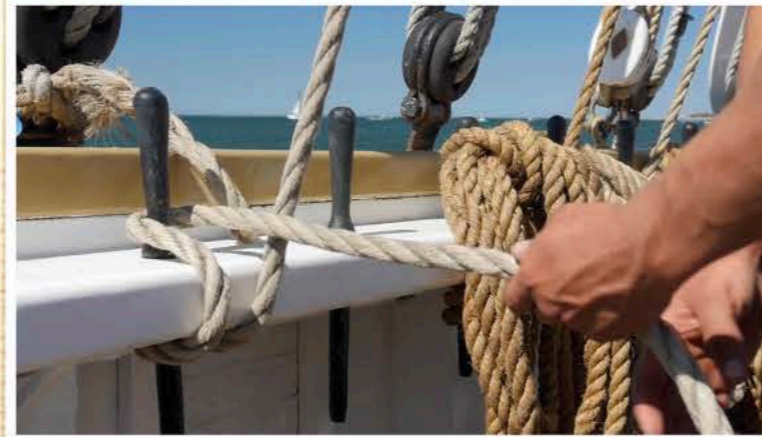


Harbor is safe, but that's not why the sails are invented for.
Try to control the wind even though it will laugh at you,
Have a proof that there is sunset and a glowing silhouette of dream,
Laugh, dream, imagine, smile,
Inhale the sharp salty smell of the air,
embrace the vastness of the horizons bounded
by a vault of azure blue sky above.
Mark your footsteps on warm sand, feel your heartbeat
leaping into ocean waves. Sea salt imprints on
your hands. Be free!

Give every day the chance to become unforgettable.

Your soul belongs to Summertime.

"Castaway"
the Art of Cloths



SPRING

Windbuffer Leather Jacket

How would you like an everyday leather jacket with a bit of American history tanned through it! We took our time - two years, in fact - making sure the Windbuffer Leather Jacket lived up to our idea of what the spring leather jacket should be. We have combined the best quality waxed & tanned leather hides in a classic windbreaker jacket style, lined it with the tightly woven pre-washed cotton shirting stripe, and came up with an inspiring example of how natural materials can over perform the stifling synthetic rivals. Its subtle, earthy color already has the patina of age. Every detail is carefully thought out and meticulously worked out - there are pockets everywhere you need them, and nowhere you don't. Proof positive the real character can't be rushed!

Spring

2023



“Castaway”
the Art of Cloths

_4014-OP-2CO - "Windbuffer" Leather Jacket 2 Tone Leather Lined Jacket

- + Fine 60's cotton poplin washed lining + Cuffs natural buttons + 8 gg zipper closure
- + Side entry pockets, + Double needle seams + Ample chest pockets
- + Adjustable cuffs + 2 tone sheep skin leather
- + Waxed, panted and tumbled for aged patina +

_5464-CHST-"South Beach" L/S Chest Printed Crew 210 grams slubby jersey-100% Cotton- White

- + Inside neck clean finish + Gilded Age cut and fit
- + Signature Gilded Age chest graphic + Water base front chest & back print +

Writer's Jacket

Writer Jacket - a travel tradition that stood the test of *Times*, as well as *Life*, *Newsweek*, *Reuters*, and now myriad of Internet publications. Popularized by Teddy Roosevelt, who brought it with the travel style that quickly caught on. In time it was copied modified, and monkeyed with this designer or that. Yet in its purest, most classic version we offer it in a soft linen/ cotton easy to care, meant to take abuse, and suitable for almost any occasion. Made of nearly invincible 55% soft linen/45% dense cotton poplin - 4 pockets - 2 bellows and 2 side entry pockets with room enough notebook, iPad, phone and a flask of whiskey for the chance joy encounter.

_6275-7GG- "Murphy" V-Neck Cotton-Linen Blend Sweater Pique Stitch V neck- White

+ 7GG Pique Stitch + Deep V-neck +
+ 1X1 Rib Cuffs +55% Linen/45% cotton+



_4251-DC-"Writer" Linen/Cotton DF Jacket- Dark Navy 55% Linen/45% Cotton Soft Doubleface Cloth

+ Soft linen/ cotton blend doublecloth plain weave + Cotton backing + Signature 6 patch pockets
+ Real horn buttons + GA style with inside waist draw-cord + Hook & eye additional fastening +
+ Contrast inside yoke and cuffs fabrics + Clean finish +

_1004-K683 "Gotham" Straight Leg Selvage Jean 100% 12.5 oz Red Berto Selvage - Aged Light Blue

+ 11" Rise + Straight Leg + Made in Italy + 12.5 oz 100% Red Selvage Cotton
+ Signature blue leather patch + Signature stitching + Signature Vintage GA Wash+



SPRING 2023

Sage Blazer / Suit

Spring / Summer 2023



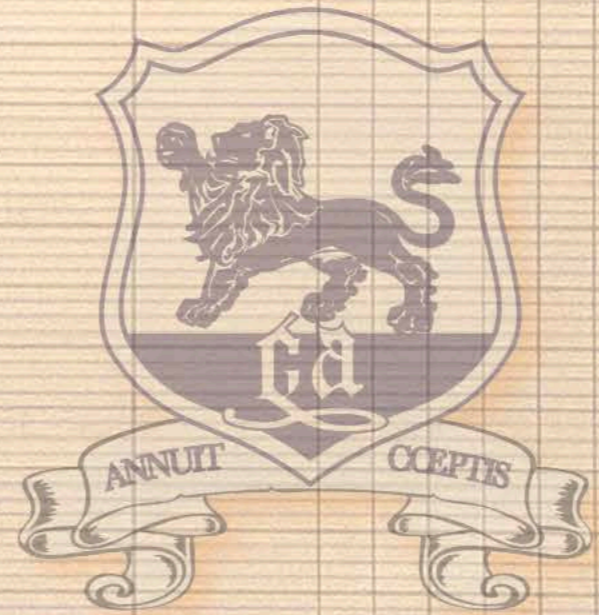
_4210-TWILL-"Sage" 200G Twill Suit Blazer
100% Cotton Fine Compact Twill - GA Khaki

Tailored construction + Split interior linen lining with stripe +
+Light shoulder pads + Real horn signature buttons +
+Back elbows and cellar suede patches +



_3023-WHT "Attenborough" Shirt
100% Crispy Poplin - White

+ Real, Thick, Mother of Pearls Buttons + Well thought out contrast trims + Side panels + + 2 patch pockets +
+ Elbow reinforcements + Tripunto contrast stitching inside collar, placket and cuffs +



_2210-TWILL-"Sage" 200G Twill Suit Pants
100% Cotton Fine Compact Twill - GA Khaki

+ Inside pant burgundy clean finishing + Gilded horn signature buttons closure +
+ Inside linen stripe pocketing + Tapered leg fit + Unwashed +

Westport Jacket

_4270-LIN- "Westport" Blazer
100% Linen Twill 3 Buttons
Linen Split Lining

Tailored construction + Split interior linen lining +
+Light shoulder pads + Real horn signature buttons +
+Back elbows and cellar suede patches +
+Patch pockets+



↑ _3003B "Parker" Printed Shirt
100% Linen Soft Hand feel Fine Linen
Red/ Natural White Floral on Khaki

+ Soft water based floral print + Real, thick, Mother of Pearls buttons + Well thought out contrast trims+ No pockets + Clean finish tape +



→ _1025-PORT "Morrison" Vintage Medium Wash jean
100% Cotton 11.5 oz -non selvage

+ Made in Italy + 11.5 oz 100% cotton denim + Signature blue leather patch +
+Signature stitching + Vintage Medium Wash +

SPRING 2023

Fine GG Tennis Sweater



_5438-WHT-"Vineyard" Self Collar Polo
100% Cotton Slubby 190 grams Jersey - White

- + Slubby 190g jersey + Side reinforced vents +
- + Drop back tail + Fabric wrapped buttons +
- + Left chest pocket +



_6276-TEN-"EASTHAM" 7GG Fine Tennis Sweater
55% Cotton /45% Linen Cable V- Sand/ Multi



_2065-TWL "Jack-K" Raw Edge Short
100% Soft Twill - Navy

- + Garment , enzyme soft wash + Signature real horn button closure +
- + CF metal zip fly + Extra coin pocket + Inside clean finish +Raw frayed hem +

_2501-PIMA-"Long Point" Performance Boardshort
100% Cotton Fine Compact Twill - GA Khaki

- + GA Signature Pineapple Print + CF Velcro Closure + Drainage Eyelets +
- + Mesh part pockets + Security back velcro pocket+
- + Inside fly protecting swim guard + Secured Cords +

SPRING 2023

Madras & Twill

Spring / Summer 2023



2065-TWL "Jack-K" Raw Edge Short

100% Soft Twill - Navy

- + Garment , enzyme soft wash +
- Signature real horn button closure +
- +CF metal zip fly + Extra coin pocket +
- Inside clean finish +Raw frayed hem +
- + Inside linen stripe pocketing +



_5469-OB-"Oak Bluffs" L/S Slub Jersey Crew
100% Cotton 190g Slubby Jersey -Printed- Navy

- + Water based chest and sleeves prints + 1180 grams 100% slubby cotton jersey +
- +Inside clean finish neck tape + doubled back yoke + Rib cuffs +



_3001B-MADRED "Madison" DF Shirt

100% Cotton Double face - Red Madras Plaid

- + Soft double face madras inspired plaid + Real, thick, Mother of Pearls buttons +
- + Well thought out + Contrast inside yoke, placket & cuffs trims +
- + Left chest pocket + Clean finish tape +



SPRING 2023

90's Stripe

Spring / Summer 2023



SPRING 2023

Navy Blazer

_4265-RAMIE- "Harris" Navy Blazer
100% Ramie, 100% Linen Lined

- + Inside 100% linen split lining + Contrast red piping +
- + Shell fabric pocketing + Real signature GA horn buttons +
- + Back slit + Light shoulder padding + Elbow patches +
- + Contrast outside back collar +
- + Functional buttonhole cuff plackets +
- + Tailored construction +



We are proud to say that the construction of this classic is commensurated with the cloth itself, and a homage to functionality. Back slit pleat makes everyday chores like driving, writing, and hands bumping considerably more comfortable by allowing your jacket to expand the reach. There is a total of 6 pocket, allowing you to assign private berth to wallet, phone,... At the cuffs you will find something most people don't see nowadays on blazers: the sleeve horn buttons actually button and unbutton, so you can roll them up out before taking off. There is more work on this blazer - a mortal attempt at perfection, with two button front.



_1025-PORT - "Morrison" Jean- Dark Worked Wash
98/2 Cotton Stretch 11.3 oz Candiani Denim
Made in Italy + 11.5 oz Stretch Denim + Signature blue leather patch +
+ Signature stitching + Dark worked wash +



_3003B "Parker" Printed Shirt 100% Linen Soft Hand feel Fine Linen
Navy/ Sand Floral on White
+ Soft water based floral print + Real, thick, Mother of Pearls buttons + Well thought out contrast trims+ No pockets + Clean finish tape +



SPRING

_4205-OP2-5C0 "Marlboro" Leather Unlined Jacket

← **Dark Whiskey Brown**

- +Tumble waxed sheep skin leather +
- + Snap buttons closure +
- +Patch pockets +
- +Side pockets +

← **Almond Brown**

Marlboro Jacket & Gotham Jean



_1025-SUXC-7716- "Morrison" 98/2 Sun Faded Light Wash

Made in Italy + 11.5 oz Stretch Denim + Signature blue leather patch + Signature stitching + Dark worked wash +

_5470-"Rebel" S/S Slubby T 100% Slubby Cotton 190g - Faded Navy

+Inside neck clean finish + Gilded Age cut and fit + Signature Gilded Age graphic + Water base print

_5472-80L-"Fitzgerald" L/S Terry Rugby 100% Cotton 250g Light Terry- Burnt Orange

+ Light spring terry cloth Jersey + 250g 100% Cotton + Inside clean finish neck tape + Side vents + Rib cuffs + Woven Twill Collar and placket + left chest GA Crest Applique +

_1004-PORT - "Gotham" Jean- Used Aged Light Wash 100% Cotton 11.6 oz Candiani Denim

Made in Italy + 11.5 oz 100% cotton denim + Signature blue leather patch + Signature stitching + Used Aged Light Wash +

"Shenandoah" Fisherman Sweater

We've always admired the intricate cable of the Irish Aran sweaters - mythic pattern with soul in each and every stitch. Yet when all is said and done, every fisherman's sweater we have come across seem to have been made for the North Seas or even the North Pole: too hot, too heavy for most of the year. We were frankly at sea until we made our own version of this handsome old classic. It has all the flavor of the original- richly cabled front, back and sleeves - but only a fraction of the heft. Indeed, our blend of 7 gg fine 55% cotton/ 45% linen is comfortable almost anywhere: under the blazer, over a shirt - or, we hasten to add, at the helm!



_3001B-WQT-11#5 -"Madison"

100% Cotton 60's Poplin - Dream Blue Stripe

- + Compact, fine, soft 100% cotton poplin + Real, thick, Mother of Pearls buttons +
- + Well thought out details+ Contrast inside yoke, placket & cuffs trims+
- + Left chest pocket + Clean finish tape +



**_6274-SAIL -"Shenandoah" 7 GG Aran Crew
55% cotton/45% linen Aran Cable- Indigo Navy**

- + 2/28nm fine 55% cotton/45% linen yarn + 7GG +
- +4X2 collar, rib & hem cuffs + Classic Aran cable stitch + Light spring sweater +



Medium Selvage Wash Medium Destroyed no Repairs Medium Destroyed with Repairs

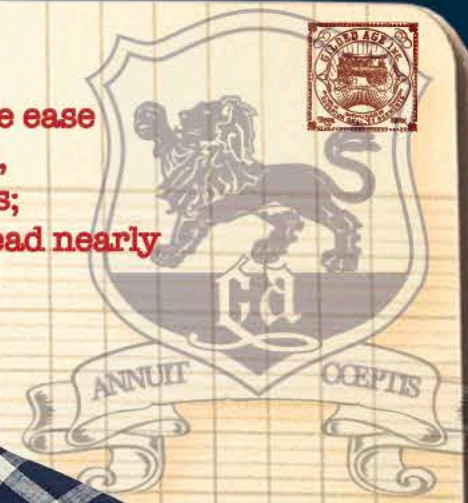
**_1025-K683 - "Morrison" Selvage Destroyed Jean
100% Cotton Red Selvage 12.8 oz Berto Denim**

- Made in Italy + 12.8 oz Red Selvage Denim + Signature blue leather patch +
- + Signature stitching + Authentic destroyed work and repair +

SPRING 2023

Madras Plaids

Early in the 19th century British soldiers under the hot Indian sun noticed that the locals move around with the ease wearing the ventilated shirts made from finest local cottons. They quickly refitted their army. Today, if you play word association with "madras", everyone will think "preppy", "golf course", "90's", or any combo thereof. The truth is, madras doesn't have to signify loud plaids in violent colors; it refers simply to the lightweight yet surprisingly strong woven cotton cloth that can be also done in a subtle patterns and soft hues that can bread nearly as readily as skin itself. Here, check out our madras !!!



Garment Dyed "Morrison"

From downtown, to uptown. From the country home to the Rockies, Gilded Age Morrison garment dyed 5 pocket in soft hues of stone, blues and rusty reds is a perfect second option to the jeans. It fits like jeans, it wears like jeans (which is to say, forever). But they can go where blue washed dungarees simply can't. A pair of pants that transcends conditions- climate & topography. How much ground you cover, it is strictly up to you!



_6277-"Bronson" 14 GG Knit Polo
73% Cotton/27% Nylon - 2/24nm- Sandstone
+ 2/24/2nm super fine 73% cotton/27% nylon yarn + 14 gg +
+ 1x1 collar, rib & hem cuffs + Button down placket +
+ Fully fashioned Chest pocket + Inside neck jersey tape+



***Desert Sage**

_1025-ROPEN- "Morrison" Garment Dyed Jean
100% Cotton Slubby Denim Garment Dyed

***GA Khaki**

_3001B-MADGRN "Madison" DF Shirt
100% Cotton Double face - Green Madras Plaid
+ Soft double face madras inspired plaid + Real, thick, Mother of Pearls buttons +
+ Well thought out + Contrast inside yoke, placket & cuffs trims+
+ Left chest pocket + Clean finish tape +

Made in Italy + Sanded stretch twill + Signature blue leather patch + Signature stitching + Garment dyed for aged patina + Slight non-permanent wrinkles

SPRING 2023

"Castaway" the Art of Cloths

Spring Summer 2023



SPRING 2023

"Castaway" Performance Retro Board shorts

Spring / Summer 2023

Today's high-tech swimwear persist in ignoring dual nature of swim shorts, as well as certain basic human needs :

e.g., pockets, secure pockets with the water drainage ability, pockets where you can compartmentalize all your needs (such as the keys, a small change, etc).

Our Castaway swim board short range is thoughtfully equipped with two mesh lined side pockets, small velcro secured key pocket, back velcro fastened pocket with drainage eyelets. We have worked hard to secure main body seams with the 3-ple needle, as well as installing signature Gilded Age CF guard making sure your private parts don't get caught in fly vecro. Made of substantial sun resistant, UV protective 100% polyester microfiber these board shorts will quickly dry and stay crisp, cool and amiable, even when faced with the large waves at South Beach.



**_2501-BLUW-
"LONG POINT" Boardshort**
100% Polyester,
50 PUV,
Side Stripes
Navy/ Natural

**_2501-HSTRP-
"LONG POINT" Boardshort**
100% Polyester,
50 PUV,
Horizontal Stripe
Red/ Multi



_2501-RED-"LONG POINT" Board short
100% Polyester, 50 PUV, Side Stripes -Red/ Navy

+50 UV protection+ Quick dry + Anti chlorine/sun fading reactive dye + Poly mesh pocketing+
+Drainage eyelets + Secure key pocketing + Full velcro strip CF fly + CF fly protection guard +
+ Secured with bartack drawcords + 3ply needle seams

_2501-PINA-"LONG POINT" Boardshort
100% Polyester, 50 PUV, Pineapple Print - Navy/Natural

+50 UV protection+ Quick dry + Anti chlorine/sun fading reactive dye + Poly mesh pocketing+
+Drainage eyelets + Secure key pocketing + Full velcro strip CF fly + CF fly protection guard +
+ Secured with bartack drawcords + 3ply needle seams

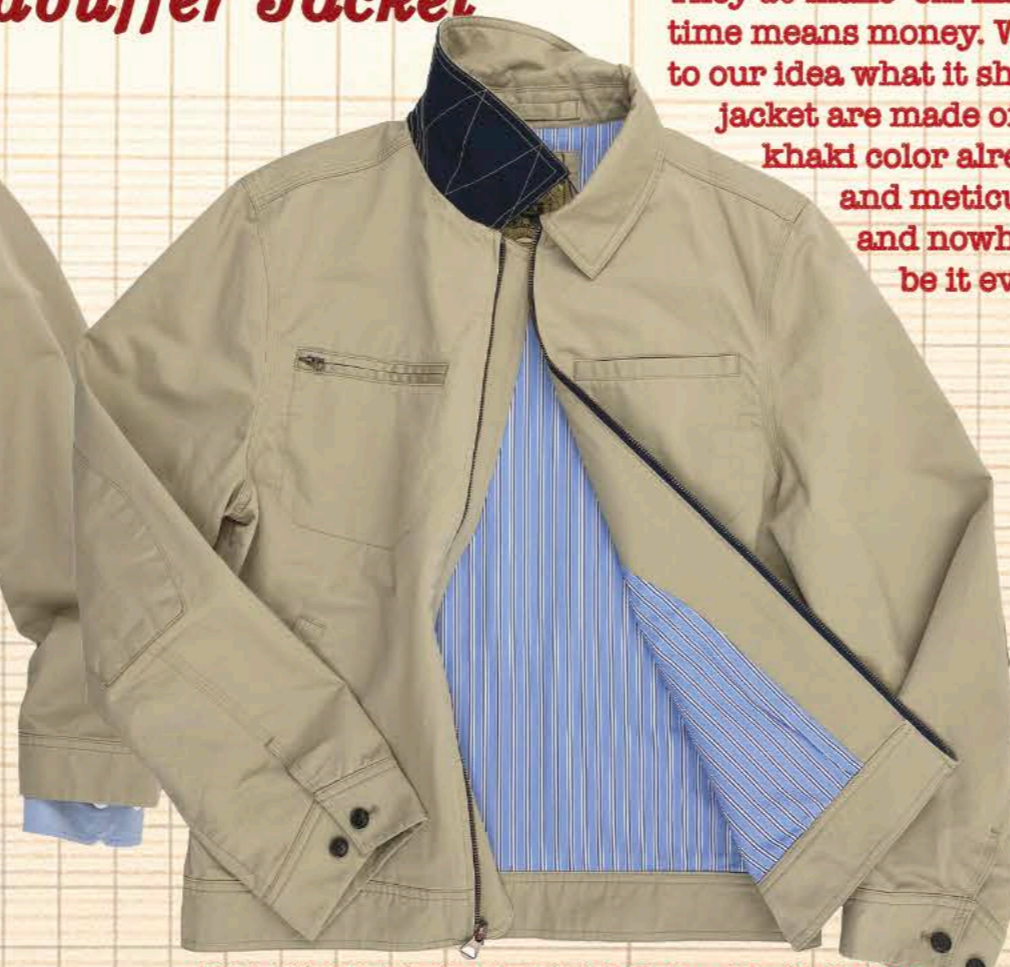
_2501-LIEF-"LONG POINT" Boardshort
100% Polyester, 50 PUV, Lief Stripes Print - Natural White

+50 UV protection+ Quick dry + Anti chlorine/sun fading reactive dye + Poly mesh pocketing+
+Drainage eyelets + Secure key pocketing + Full velcro strip CF fly + CF fly protection guard +
+ Secured with bartack drawcords + 3ply needle seams

SPRING 2000

Windbuffer Jacket

They *do* make 'em like that anymore - if they chose if they ignore the dictum that time means money. We took our time, making sure this Windbuffer Jacket lived up to our idea what it should be. Both shell and lining of this classic windbreaker style jacket are made of tightly woven, prewashed, fine cotton. Its subtle, earthy khaki color already has patina of age. Every detail is carefully thought out and meticulously worked - there are pockets everywhere you need them, and nowhere you don't. This jacket elevates any task, be it ever so humble.



_3001B-OXFD-"Madison"
100% Cotton Oxford - Light Blue
+ Compact, fine, soft 100% cotton oxford + Real, thick, Mother of Pearls buttons + Well thought out details + Contrast inside yoke, placket & cuffs trims + Left chest pocket + Clean finish tape + Heavy Garment Wash +

_4014-TWILL-"WINDBUFFER" Cotton Twill Jacket
100% Cotton Twill, 100% cotton stripe lining - GA Khaki
+5GG Antique brass CF metal zipper + 100% Cotton 60's poplin shirting striped lining + Signature horn cuff buttons + Reinforced elbows + Contrast back collar +Chest Zipper+



_2060-DFPLAID-"Yale" Doubleface Lined Short
100% Cotton Doubleface - Blue Green Madras Plaid
+ Soft 100% cotton doubleface fabric + French fly construction + Signature Horn buttons +4GG Antique bras metal zippers + Back pocket flaps with hidden buttons + Contrast clean fins trims inside + 8" Inseam

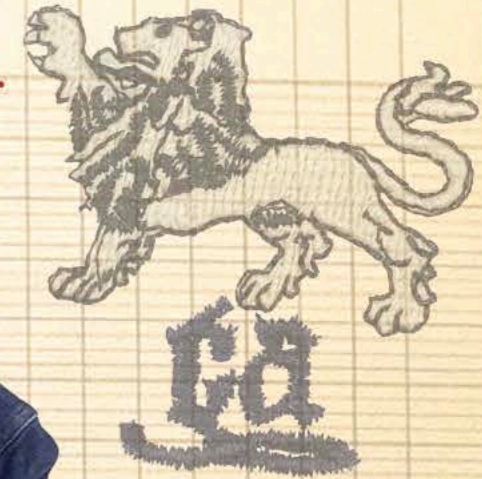
_2060-DFPLAID-"Yale" Doubleface Lined Short
100% Cotton Doubleface - Red Navy Madras Plaid
+ Soft 100% cotton doubleface fabric + French fly construction + Signature Horn buttons +4GG Antique bras metal zippers + Back pocket flaps with hidden buttons + Contrast clean finish trims inside + 8" Inseam

SPRING 2023

**Don't Leave Home Without Them
Solid Wovens**

Spring / Summer 2023

Looks like cotton, feels like cotton, but when you put it on you may think damn well cotton it's not! It is more than cotton. Talk about understatement. Nobody will EVER know you're in utter ecstasy! Finest, lightest 100% cotton it is!!



_3009-DNM- "Work" Shirt
100% Cotton Denim Chambray
Dark Wash

_3023-KHK
"Attenborough" Shirt
Khaki

_3023-WHT "Attenborough" Shirt
100% Crispy Poplin - White

+ Real, Thick, Mother of Pearls Buttons + Well thought out contrast trims +
+ Side panels ++ 2 patch pockets + Elbow reinforcements +
+ Tripunto contrast stitching inside collar, placket and cuffs +

_3001B-OXFD-
"Madison" Shirt
Light Blue

_3007b-DNM- "Utility" Shirt
100% Cotton Denim Chambray
Dark Rinse

SPRING 20



← **_4160-VEG 2 TONE "Winslow" Dark Brown
2 Tone Painted Leather Unlined Jacket**
 + Unlined + Clean finished inside seams + Shank signature buttons +
 + Side entry pockets, + double needle seams + Ample chest pockets
 + Adjustable cuffs + 2 tone sheep skin leather +
 + Vintage patina +

Deck Pants

Weaving tough, long staple Italian 11.02 oz cotton into dense and tight panama canvas enhances it's silky texture, while garment dying gives it necessary aged patina - all desirable qualities in a tough pair of pants made in Italy. Sewn in a 3 ply needle stitching made for rugged wear, these wide leg relaxed trousers are tailored for the streets of New York, but can also help the deck hands build a sailboat with equal elan. No-nonsense pant for the individual in everyman..



↑ **_5471-C&S-"Fitzgerald" L/S Terry Stripped Rugby**
100% Cotton 250g Light Terry- Burnt Orange/Oats Heather
 + Light spring terry cloth Jersey + 250g 100% cotton + Pieced wide stripes +
 + Inside clean finish neck tape + Side vents + Rib cuffs +
 + Woven Twill Collar and placket + left chest GA Crest Applique +

↑ **_1015-KAN- "Deck" Carpenter Wide Relaxed Pant**
100% cotton 11 oz Canvas - Garment Dyed - Desert Khaki
 Made in Italy + 11.0 oz 100% Cotton canvas + Signature blue leather patch +
 + Signature stitching + Garment dyed + 3 ply needle seams + reinforcement double patches +

SPRING

***GA Khaki**

***Natural White**

**_6275-7GG- "Murphy" - 9 GG Pique Stitch V neck
55% cotton/45% linen - Natural White
+ 2/30nm fine 55% cotton/45% linen yarn + 9GG + 360 grams
+4X2 collar, rib & hem cuffs + Pique stitch + Light spring sweater +
+Deep V-neck + Soft light summer sweater +**

2/30nm 2ply V-neck of 55% cotton and 45% of South Seas linen. The linen brings the luster and resilience to cotton's comfort and adaptability to temperature changes. Pique stitch for a classic look, deep V neck for extra style. For the travelers who traverse the climates. Packs easily, won't wrinkle, and you'll be amazed how often you give it a nod on any given trip.



***GA Khaki**

***Desert Sage**

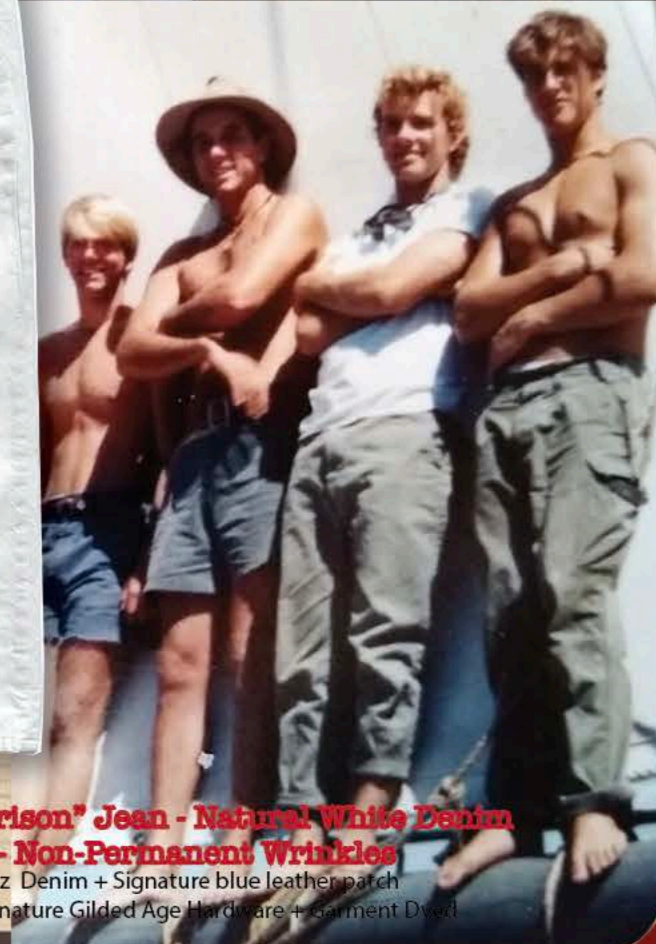
***Natural White**

**_2010-RAWIWL - "McCoy" Wide Leg Pant
100% Cotton Garment Dyed Twill - Desert Sage**

Made in Italy + Stretch twill + Signature print on back w/b + Signature stitching + Hollywood Waistband + French Fly+ Signature Gilded Age shank buttons fly and CF + Patch pockets

**_1025-ROPEN "Morrison" Jean - Natural White Denim
100% Cotton- Non-Permanent Wrinkles**

Made in Italy + 11.5 oz Denim + Signature blue leather patch + Signature stitching + Signature Gilded Age Hardware + Garment Dye





_3003B-NVYRDPD "Madison" Cotton Lawn Shirt
100% Cotton Lawn - Navy Red Plaid
 + Soft light lawn poplin + Real, thick, Mother of Pearls buttons +
 + Well thought out + Contrast inside yoke, placket & cuffs trims +
 placket & cuffs trims + No pockets +

_3001B-GHNGH "Madison" Chambray Shirt
55% Cotton/45% Linen Ghingham - Blue Check
 + Soft chambray fabric + Real, thick, Mother of Pearls buttons +
 + Well thought out + Contrast inside yoke, placket & cuffs trims+
 + Left chest pocket + Clean finish tape +

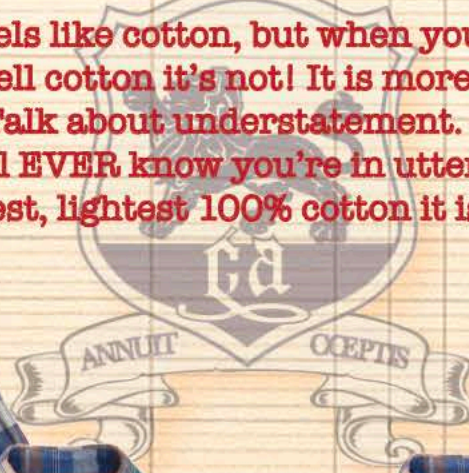
"Castaway"
 the Art of Cloths

Looks like cotton, feels like cotton, but when you put it on you may think damn well cotton it's not! It is more then cotton.

Talk about understatement.

Nobody will EVER know you're in utter ecstasy!

Finest, lightest 100% cotton it is!!



_3017-SEA "Seymour" Sea Blue Plaid Light Twill
 + Real, Thick, Mother of Pearls Buttons
 + Well thought out contrast trims
 + Side panels + Elbow reinforcements

_3001B-MADRED "Madison" DF Shirt
100% Cotton Double face - Red Navy Madras Plaid
 + Soft double face madras inspired plaid + Real, thick, Mother of Pearls buttons +
 + Well thought out + Contrast inside yoke, placket & cuffs trims+
 + Left chest pocket + Clean finish tape +

_3030 -ORANGB "Explorer" S-S Doubleface Shirt
100% Cotton Double face - Orange Blue Madras Plaid
 + Soft double face madras inspired plaid + Real, thick, Mother of Pearls buttons +
 + Well thought out + Contrast inside yoke, placket & cuffs trims+
 + Left chest pocket + Clean finish tape +

_3001B-MADGRN "Madison" DF Shirt
100% Cotton Double face - Green Blue Plaid
 + Soft double face madras inspired plaid + Real, thick, Mother of Pearls buttons +
 + Well thought out + Contrast inside yoke, placket & cuffs trims+
 + Left chest pocket + Clean finish tape +

Gilded Age

EST. 2005

SPRING 2023, **No 34** SEASON
 GILDED AGE - MENS COLLECTION

100% South Seas Linen

Linen, the product of the flax plant, has been known as softest, strongest, lightest, drapiest, coolest, most absorbent, quick drying fiber on earth. It's no secret this 5000 Years-old Performance Fabric, used since the days of Queen Hatshepsut and King Tut (in addition to cotton), is Gilded Age fabric of choice for any spring/summer season. Fact is, linen may be the most performance-oriented natural fabric on earth. It is such a good conductor of heat, it actually pulls heat away from the body, it repels dirt, naturally resistant to microbial attacks, and when it gets wet, it gets stronger. Here... We put it to use in a stunning array of great classics patterns appropriate for any time, anywhere from 70th parallel South. We guarantee you'll be sweating less, while keeping as cool as Italian ice gelato.



_3003-CAFÉ "Parker" Shirt
100% Linen - Cocoa Yellow Plaid
 + Real, natural, tagua shell brown buttons
 + Well thought out contrast trims
 + Contrast burgundy buttonholes



_3003B-DOTSTP "Adams" Dobby Shirt
100% Soft Linen - Navy Dots Horizontal Stripe
 + Real, thick, mother of pearls buttons + Well thought out contrast trims + Banded collar style + contrast burgundy buttonholes

_3024-BENG "Fitzgerald" Banded Collar
100% Soft Linen - Blue Bengal Stripe
 + Real, thick, mother of pearls buttons + Well thought out contrast trims + Banded collar style + contrast burgundy buttonholes



_3001B-NVYPANE "Madison"
100% Soft Linen - Navy Windowpane
 + Real, thick, mother of pearls buttons + Well thought out contrast trims + Banded collar style + contrast burgundy buttonholes



_3001B-BENGAL "Madison" Linen Shirt
100% Soft Linen - Blue Mini Bengal Stripe
 + Real, thick, mother of pearls buttons + Well thought out contrast trims + Banded collar style + contrast burgundy buttonholes



_3001B-TEAL "Madison" Linen Shirt
100% Soft Linen - Teal/White Linen Stripe
 + Real, thick, mother of pearls buttons + Well thought out contrast trims + Banded collar style + contrast burgundy buttonholes



_3003B-BLULNP "Adams" Linen Check
100% Soft Linen - Blue/ White Check
 + Real, thick, mother of pearls buttons + Well thought out contrast trims + Banded collar style + contrast burgundy buttonholes



_3001B-WHTPANE "Madison" Linen Shirt
100% Soft Linen - White Blue Windowpane
 + Real, thick, mother of pearls buttons + Well thought out contrast trims + Banded collar style + contrast burgundy buttonholes



_3001B-OXFD-"Madison"
100% Cotton Oxford - Light Blue
+ Compact, fine, soft 100% cotton oxford + Real, thick, Mother of Pearls buttons +
+ Well thought out details+ Contrast inside yoke, placket & cuffs trims+
+ Left chest pocket + Clean finish tape +
+Heavy Garment Wash+

_3023-WHT "Attenborough" Shirt
100% Crispy Poplin - White

- + Real, Thick, Mother of Pearls Buttons + Well thought out contrast trims +
- + Trippunto contrast stitching inside collar, placket and cuffs +
- + Side panels ++ 2 patch pockets + Elbow reinforcements



"Castaway"
the Art of Cloths



3001B-W QT-15#1 -"Madison"
100% Cotton 60's Poplin
- Blue Green Stripe

- + Compact, fine, soft 100% cotton poplin +
- + Real, thick, Mother of Pearls buttons +
- Contrast inside yoke, placket & cuffs trims+
- + Left chest pocket + Clean finish tape +
- + Well thought out details+



3001B-W QT-15#2 -"Madison"
100% Cotton 60's Poplin
- Blue/ Pink Stripe

- + Compact, fine, soft 100% cotton poplin +
- + Real, thick, Mother of Pearls buttons +
- Contrast inside yoke, placket & cuffs trims+
- + Left chest pocket + Clean finish tape +
- + Well thought out details+



_3001B-W QT-10#5 -"Madison"
100% Cotton 60's Poplin - White Multi Blue Stripe

- + Compact, fine, soft 100% cotton poplin +
- + Real, thick, Mother of Pearls buttons +
- + Well thought out details+ Contrast inside yoke, placket & cuffs trims+
- + Left chest pocket + Clean finish tape +



_3001B-WQT-11#5 -"Madison"
100% Cotton 60's Poplin - Dream Blue Stripe

- + Compact, fine, soft 100% cotton poplin +
- + Real, thick, Mother of Pearls buttons +
- + Well thought out details+ Contrast inside yoke, placket & cuffs trims+
- + Left chest pocket + Clean finish tape +



_3001B-W QT-13#6 -"Madison"
100% Cotton 60's Poplin
- Wide Blue Stripe

- + Compact, fine, soft 100% cotton poplin +
- + Real, thick, Mother of Pearls buttons +
- Contrast inside yoke, placket & cuffs trims+
- + Left chest pocket + Clean finish tape +
- + Well thought out details+

SPRING 2023

Life's Simple Wonders



_3023-WHT "Attenborough" Shirt
100% Crispy Poplin - White

+ Real, Thick, Mother of Pearls Buttons + Well thought out contrast trims +
+ Tripunto contrast stitching inside collar, placket and cuffs +
+ Side panels + + 2 patch pockets + Elbow reinforcements

_3005B "Parker" Printed Shirt
100% Linen Soft Handfeel Fine Linen
Orange/ Natural White Floral on Khaki

_3005B "Parker" Printed Shirt
100% Linen Soft Handfeel Fine Linen
Navy/ Sand Floral on White



_3023-BDFCRD "Bombay" Multi Pocket Shirt
100% Cotton Bedford Cord - GA Khaki

2 Pockets with pleats+ Real Tagua Nut Buttons + Sleeve adjustable tabs
+ Triple needle + Multiple patch pockets+ Well thought out contrast trims
+ Back reinforced elbows+ Tripunto inside cuffs stitching + Clean finish tape

_3022-WHTLIN "Bombay"
Multi Pocket White 100% Linen- White

+ Real, Thick, Mother of Pearls Buttons
+ Well thought out contrast trims+ Side panels + Elbow reinforcements
+ Sleeve roll up tabs + Multi pockets+Twin needle- Tripunto stitch



_3009-CHAMB "Work" Shirt
100% Denim Chambray - Dark Wash

+ Real, 4hole, Metal Buttons + Well thought out contrast trims +
+ Tripunto contrast stitching inside collar, placket and cuffs +
+ Side panels + + 2 patch pockets + Elbow reinforcements

_3007b-DNM "Utility" Shirt
100% Denim Chambray - Dark Rinse

+ Real, Tagua Natural Buttons + Well thought out contrast trims +
+ Tripunto contrast stitching inside collar, placket and cuffs +
+ Side panels + + 2 patch pockets + Elbow reinforcements

SPRING



Feel Good Stripes & Straight Leg Jeans



_6278- S-S "Cove" S/S Sweater Crew
100% cotton - 2/28 nm Jersey Stitch - Navy
+ 2/28/2nm super fine 100% cotton+Soft yarn + 12 gg +
+1x1 collar, rib & hem cuffs + Collar and cuffs contrast
double rib+ Raw edge rolled up self start side seams
contrast color + Fully fashioned Chest pocket +
+ Inside neck jersey tape+



_6275-STRP - "BEDFORD"- 7GG Jersey Stitch Crew
100% cotton - Sky Blue
+ 2/30nm fine 100% cotton + 9GG + 360 grams
+4X2 collar, rib & hem cuffs + Jersey stitch + Light spring sweater +
+Striped crew + Left sleeve Gilded Age applique crest patch +



_1004-K683 "Gotham" Straight Leg Selvage Jean
100% 12.5 oz Red Berto Selvage - Broken-in Mid Dark Wash
+ 11" Rise + Straight Leg + Made in Italy + 12.5 oz 100% Red Selvage Cotton
+ Signature blue leather patch + Signature stitching + Signature Vintage GA Wash+

SPRING 2023

"Castaway" the Art of Clothing

Retro T's

Our customers once longed for the T-shirts that express their lifestyle, addressing those simplest wonders of the world: happiness, pleasure, unbearable lightness of dreams, adventure, exploring, thirst for knowledge & discoveries, and yes... The easy life! Now they long no longer. Our Spring 2022 T-shirts are lightweight, generously tapered, and shrink resistant. Best of all, they are made of our softest long staple slub 100% cotton, packed into 190 grams per sq. inch, pre-washed, and dyed in cool colors. From Key West to Martha's Vineyard onto the Hawaii islands, the sanest way to go out in the noonday sun.



_5456-"Sunset Happy" T - Jade Blue
210 grams jersey-100% Cotton
+Inside neck clean finish + Gilded Age cut and fit
+ Signature Gilded Age graphic + Water base print



_5453-MMT8-"Moments that Matter" T
210 grams jersey-100% Cotton- Mist Blue
+Inside neck clean finish + Gilded Age cut and fit
+ Signature Gilded Age graphic + Water base print



_5470-"Rebel"- Faded Navy T
190 grams slubby jersey-100% Cotton
+Inside neck clean finish + Gilded Age cut and fit
+ Signature Gilded Age graphic + Water base print



_5469-OB-"Oak Bluffs" L/S Slub Jersey Crew
100% Cotton 190g Slubby Jersey -Printed- Navy
+ Water based chest and sleeves prints + 190 g 100% slubby cotton jersey +
+ Inside clean finish neck tape + doubled back yoke + Rib cuffs +



_5467-"Sunset Cruise"- Sky Blue T
190 grams slubby jersey-100% Cotton
+Inside neck clean finish + Gilded Age cut and fit
+ Signature Gilded Age graphic + Water base print



_5464-CHST-"South Beach" L/S Crew T
190 grams slubby jersey-100% Cotton- White
+ Inside neck clean finish + Gilded Age cut and fit
+ Signature Gilded Age chest graphic +
+ Water base front chest & back print +

SPRING 2023

New York Stories

Spring / Summer 2023



_5468- "Dark Was the Night"- Gray Blue T
190 grams slubby jersey-100% Cotton
+Inside neck clean finish + Gilded Age cut and fit
+ Signature Gilded Age graphic + Water base print



_5466- "Eagle"- Gray Heather T
190 grams slubby jersey-100% Cotton
+Inside neck clean finish + Gilded Age cut and fit
+ Signature Gilded Age graphic + Water base print



_5465- "EQUALITY"- White T
190 grams slubby jersey-100% Cotton
+Inside neck clean finish + Gilded Age cut and fit
+ Signature Gilded Age graphic + Water base print



_1025-K683- "Morrison" Red Selvage -Raw Jean
100% Cotton -12.8 oz Slubby Denim Selvage -Raw

Made in Italy + Berto's red selvage + Signature blue leather patch + Signature stitching + Garment dyed for aged patina + Raw Jean +

Gilded Age

EST. 2005

SPRING 2023, **Nº 34** SEASON
GILDED AGE - MENS COLLECTION

Veg Tanned Leather & Lion Crest Polos



_4160-VEG-"Winslow" Tan Brown & Tone Painted Leather Unlined Jacket
+ Unlined, Vegetable tan + Clean finished inside seams +
+ Shank signature buttons + Side entry pockets, + Double needle seams +
+ Ample chest pockets + Adjustable cuffs + 2 tone sheep skin leather+
+Vintage patina+



_5473-RIB-"Teddy" Printed Navy Stripe 180 g 100% Cotton-Liquid Ammonia
+ Water based printed stripes + 180 g 100% liquid ammonia finish soft jersey +1X1 flat knit rib collar +
+ Inside clean finish neck tape +
+ Side clean finish vents + 2 buttons +

_5474-RIB-"Teddy" Printed Navy 180 g 100% Cotton-Liquid Ammonia
+ Water based printed stripes + 180 g 100% liquid ammonia finish soft jersey + 1X1 falt knit rib collar +
+ Inside clean finish neck tape +
+Side clean finish vents + 2 buttons +

_1028-KAN-"Morrison" Garment Dyed Canvas 100 Cotton 11.2 oz Canvas- Sandstone
Made in Italy + 11.2 OZ emerized canvas +
+ Signature blue leather patch +Signature stitching +
+ Garment dyed for aged patina +

SP

**_4160-OP8CO "Winslow" Dark Almond Drown
2 Tone Leather Unlined Jacket**

- + Unlined + Clean finished inside seams + Shank signature buttons +
- + Side entry pockets, + double needle seams + Ample chest pockets +
- + Adjustable cuffs + 2 tone sheep skin leather



Originally styled in the late 1930's, worn by folks on farm stands and factory floors. Crafted from first-quality matched sheep-hide to Gilded Age specks and 2021 design. Every detail from the 1930's ancestors is here: front pleats, lower chest pockets, shank buttons, side entry pockets. To stay true to its inspiration we've EVEN added one final dimension to take it all the way - a few years of "wear" to the leather.

**_4160-DNM- "Winslow"
12 OZ Slubby Indigo
Denim Jacket
Mid-Dark Wash**



**1004-A-TWILL- "Gotham" Garment Dyed Canvas
100% Cotton Anemone Twill- Desert Sage**

- Made in Italy + 100% Cotton twill +
- + Signature blue leather patch + Signature stitching +
- + Garment dyed for aged patina +

**_1025-LTO TWILL- "Morrison" Garment Dyed Twill
98% Cotton/ 2% Stretch Cotton Twill- Sand**

- Made in Italy + 198/2 Cotton stretch twill +
- + Signature blue leather patch + Signature stitching +
- + Garment dyed for aged patina +

SPRING 2023

“Castaway”
the Art of Cloths

Prints



SPRING 2023

Writer Jacket - a travel tradition that stood the test of *Times*, as well as *Life*, *Newsweek*, *Reuters*, and now myriad of Internet publications. Popularized by Teddy Roosevelt, who brought it with the travel style that quickly caught on. In time it was copied, modified, and monkeyed with by this designer or that. Yet in its purest, most classic version we offer it is wrinkle resistant, meant to take abuse, and suitable for almost any occasion. Made of nearly invincible 100% dense cotton poplin - 4 pockets - 2 bellows and 2 side entry pockets with room enough for notebook, iPad, phone and a flask of whiskey for the chance icy encounter.



Writer's Jacket & Pant



_4281-DC-"Writer" Dense Canvas Jacket- Sand Khaki
100% Dense Cotton Sanded Poplin Unlined Jacket

Light dense cotton canvas + Unlined shirt jacket + signature 6 patch pockets
+ Real horn buttons + GA style with inside waist draw-cord + Hook & eye additional fastening

_2025-TWILL - "Conrad" Morrison Fit Pant
98% Cotton/ 2% Stretch Twill - US Drill Khaki

Made in Italy + Light stretch twill + Signature print on back w/b + Signature stitching + Garment dyed for aged patina + Signature Gilded Age style with ergonomic knee + Patch pockets

“Beach” in English means a land form along the coast of an ocean, sea, lake, or river that usually consists of loose particles, such as sand, gravel, or pebbles... Beach also means pleasure, relaxation, comfort, and all good things. And that was an inspiration for our very own Beach Pant. The relaxed fit perfectly accompanies relaxed strolls; the airy linen weave provides comforting protection from midday sun, or evening cool. With elastic and draw-cord waistband, slash side pockets, and patch back pockets our Beach Pant strikes another victory for form and function without ignoring life's little comforts.



↑ **_2064-8211-"Havana Club" Dense Poplin Short**
100% light dense poplin - GA Khaki

- + Clean finished inside seams + Shank signature buttons + Shank Button CF Fly closure
- + Side entry pockets, + Double needle seams + Patch fatigue pockets + Side seam binding
- + Inside W/B and pocketing natural cotton twill + Back patch pockets



↑ **_2064-LINEN-"Havana Club" Linen Twill Short**
100% linen light twill - Sand Khaki

- + Clean finished inside seams + Shank signature buttons + Shank Button CF Fly closure
- + Side entry pockets, + Double needle seams + Patch fatigue pockets + Side seam binding
- + Inside W/B and pocketing natural cotton twill + Back patch pockets



↑ **_2030-LINEN -"Beach"Relaxed Drawstring Pant**
100% Linen Twill - Light Sand

- Light Linen Twill + Encased elastic & exposed draw-cord
- + Garment washed for softness + Metal zipper fly + Side pockets + Back Flap

SPRING 2023

Wide Leg Houston Jean



_1003-TEDBLUE-"Houston" Wide Leg Jean

98% Cotton/2% Stretch Italian Denim- Dark Worked

Made in Italy + 11.8 oz stretch twill + 11" rise + 4 CF Fly buttons + Signature stitching + Special worked wash for aged patina + Signature Gilded Age Blue leather patch + Signature hardware



_1003-O'NUTT-"Houston" Wide Leg Jean

98% Cotton/2% Stretch Italian Denim- Light Blue Wash

Made in Italy + 11.8 oz stretch twill + 11" rise + 4 CF Fly buttons + Signature stitching + Special worked wash for aged patina + Signature Gilded Age Blue leather patch + Signature hardware

SPRING 2023

***Gotham Straight Leg
The Fundamental Things Remain!***



**_1004-GRYBLU "Gotham" Straight Leg Jean
98/2 Cotton Stretch - Gray-Blue Jean**

High Rise + Straight Leg + Made in Italy + 11.5 oz Stretch Denim
+ Signature blue leather patch
+ Signature stitching + Gray blue shade of gray denim

**_1004-WBLUE "Gotham" Straight Leg Jean
100% Retro Cotton - Washed Blue**

High Rise + Straight Leg + Made in Italy + 12.5 oz 100% Cotton
+ Signature blue leather patch
+ Signature stitching + Washed acid blue

**_1004-RAWTWL "Gotham" Straight Leg 5 Pkt
98/2 Cotton Stretch - US Drill Khaki**

High Rise + Straight Leg + Made in Italy + 240 grams Stretch Twill
+ Signature blue leather patch
+ Signature stitching + US drill khaki dye



Originally styled in ... who knows when... probably in some mine alongside Russian River, and worn by a miner, a gentleman, and a traveler alike for ages. Crafted from first-quality matched sheep-hide to Gilded Age specks & 2022 upgraded design accompanied with the zipper. Every detail from the 1930's ancestors is here: front pleats, lower chest pockets, shank buttons, side entry pockets. To stay true to its inspiration we've EVEN added one final dimension to take it all the way - a few years of "wear" to the leather.

**_4086-SUEDE-"Wayne"
Unlined Suede Jacket
100% light sheepskin suede-
Camel Brown →**



**_4086-YELL. -"Wayne" Gold Ice-bond Leather Jacket
2 Tone Leather Unlined Jacket**

- + Unlined + Clean finished inside seams + Shank signature buttons + 4 gg zipper closure
- + side entry pockets, + double needle seams + ample chest pockets
- + Adjustable cuffs + 2 tone sheep skin leather

**_4086-SUEDE-"Wayne" Unlined Suede Jacket
100% light sheepskin suede- Single Malt Brown**

- + Unlined + Clean finished inside seams + Shank signature buttons + 4 gg zipper closure
- + Side entry pockets, + double needle seams + Ample chest pockets
- + Adjustable cuffs + Soft sheepskin suede + Outside back collar brown leather

**_4086-SUEDE-"Wayne" Unlined Suede
100% light sheepskin suede- Black**

SPRING 2023

The Fundamental Things Remain!

Spring / Summer 2023



The shirt to come home to! Here, the fundamentals still apply: slubby Japanese all cotton knit in a crew neck pullover, in a primary white and three anything-but basic indigo hues. A comforting next of-skin, as the time goes by!!

SLUBBY INDIGO TERRY CREWS



_5411-C "Howard" 240 g Cotton Terry
Dark Indigo or Light Indigo Pooksted Crew
+Indigo slub jersey + Coverlock stitch + Chest pocket + Foldover cuffs
hem & collar + Raglan sleeve + Varsity V neck +



_5428-C "Summers"
190g Slubby Cotton
Jersey Crew- White
+Indigo slub jersey +Coverlock stitch +
+Sleeve pocket + Foldover cuffs,
hem & collar + Raglan sleeve +
+ Varsity V neck + Side panels +



_5428-C "Summers" 240g Slubby Cotton
Terry Crew- Light Indigo
+Indigo slub Terry +Coverlock stitch +Sleeve pocket + Foldover cuffs,
hem & collar + Raglan sleeve + Varsity V neck + Side panels



_5428-C "Summers" 240g Slubby Cotton
Terry Crew- Dark Indigo
+Indigo slub Terry + Coverlock stitch +Sleeve pocket + Foldover cuffs,
hem & collar + Raglan sleeve + Varsity V neck + Side panels

_1025-O'NUTT "Morrison" Jean 98/2 Cotton Stretch
Mid Light Wash
Made in Italy + 11.5 oz Stretch Denim + Signature blue leather patch +
+ Signature stitching + Dark wash



White



Black

_5440- "Regatta" 2 Layers of 190g Slubby Cotton Jersey Pullover

+ 190 grams cotton slubby jersey + Fabric wrapped buttons +
Doubled jersey layer body ++ Clean finish double layer hood
+ Side entry pockets pouch + Chest pocket with button +
+ Basket weave hood



_9040- "Globetrotter" Black Leather Gray Nylon Twill Flannel Lined Backpack

BAG SIZE: 18" backpack base height
x 7" backpack width
x 14" backpack bottom base width
x 12 3/4" backpack front bottom base

Black Jeans



_9010-BLK "Weekender" Black Leather Plaid Flannel Lined Duffel Bag

BAG SIZE: 26" bottom base length
x 22 1/2" top base length
x bottom width 8"
x 2" above bottom
9" bag width x 7" top bag width.
Bag height is 12 1/2".

_4205-BLK "Marlboro" Black Leather Sleeve lined - Black

+Tumble waxed sheep skin leather + Snap buttons closure
+Patch pockets + Side pockets +Clean finish inside

_1026-KHOL "Morrison" Jean Black 98% Cotton/2% Stretch Non-Permanent Wrinkles

Made in Italy + 11.5 oz Stretch Denim + Signature blue leather patch
+ Signature stitching + Signature everything!

SPRING 2023

Indigos & White Slub 190g Jersey



**Light Indigo
240g Terry**



**Dark Indigo
240g Terry**



**↑ _5425-"Brando" 8/8 Jersey Pocketed T
190g Slubby Cotton Jersey**
+ Side vents+ Self fabric collar
+ Left chest pocket- Soft enzyme wash

**_5440-IND - "Regatta" 320g Indigo
Soft Terry Hooded Pullover**
+ Indigo dye + 235 grams cotton slubby terry cloth '
+ Fabric wrapped buttons + Doubled back neck yoke +
+ Clean finish double layer hood + Side entry pockets pouch
+ Chest pocket with button + Basket-weave hood cord +



**↑ ↑ _5432-ABC-"MoQueen" 8/8 Jersey Henley
190g Slubby Cotton Jersey**
+ Fabric wrapped buttons Buttons+ Side panels
+ Left chest pocket- Soft enzyme wash

**_5431-8C-"Vineyard" 8/8 Jersey Polo
190g Slubby Cotton Jersey**
+ Fabric wrapped buttons Buttons+ Self fabric collar
+ Left chest pocket- Soft enzyme wash

SPRING 2023

Gilded Age Jeans

Spring / Summer 2023



PREMIUM DENIM



**_1025-CATCH- "Morrison" 100% Cotton
Red Selvage Deep Indigo Raw**

**_1025-PORT- "Morrison" 100% Cotton
Vintage Medium Wash**

**_1025-UTIL- "Morrison" 9/82
Summer Dark Wash**

**_1025-UTIL "Morrison" 98/2
Medium Clean Wash**

**_1025-SUXC-7716- "Morrison" 98/2
Sun Faded Light Wash**

**_1025-SUCX- "Morrison" 98/2
Katama Mid Blue Wash**

Premium Italian Made Denim

EST. 2005

SPRING 2023, GILDED AGE - MENS COLLECTION

N°34

SEASON

SPRING 2023



Spring / Summer 2023

MADE IN JAPAN



_1011-NM1047-TOYO- "Baxten"
Artist Wash Slubby Indigo

_1011-NM1047-TOYO- "Baxten"
Raw Slubby Indigo

_1011-HI-TOYO- "Baxten"
Raw Natural Indigo

_1011-HI-TOYO- "Baxten"
Raw Dark Resinated Natural Indigo

_1011-HI-TOYO- "Baxten"
Dark Wash Natural Indigo

Japanese Made Selvage - Natural Slub Indigo



EST. 2005

SPRING 2023, **N^o34** SEASON
GILDED AGE - MENS COLLECTION

SPRING 2023

**Navy Single Malt
Globetrotter Backpack**



**_9010- "Weekender"
Waxed Tumbled Leather
Duffel Bag**



TRAVEL BAGS



**_9010- "Weekender"
18 oz Cotton Canvas / Leather
Duffel Bag**



**Green/ Single Malt
GA-9040 -18oz Cotton Canvas/Leather mix
Signature Backpack**



Khaki/ Single Malt



**GA-9020 -Canvas Leather
GlobeTrotter Travel Bag**

