

SCANNING TROLLEY



SX2 All Electric Scanning Trolley

Latest design for the Ultrasound Imaging and Diagnostic Clinics this table provides a comfortable working environment for both the sonographer and the patient.

Industry feedback has led to the design of the SX2 Ultrasound Trolley to improve WH&S whilst maintaining a comfortable working position for both the sonographer and patient.

The SX2 Trolley has a low minimum height provides excellent access for patients with limited mobility or for wheelchair transfers, while the working height can easily be adjusted to assist with patient positioning together with upholstery width that helps reduce fatigue on the sonographer.

The electrically operated backrest aids patient positioning during scans, particularly with finer adjustments, whilst aiding in patients alighting from the bed.

The unique electrically operated central locking wheels mean each 100mm diameter castors are locked and unlocked at the touch of a button. No more 'kick brake' mechanism or mechanically levels, simply and effortless touch of a button and the SX2 can be manoeuvre within the rooms or used as a patient transport trolley.

The SX2 unique design means that it can be used in even the smallest of rooms as it transits between its lowest to highest position within its own foot print.

Supplied with a paper towel dispenser for a hygienic working surface.

Australian manufactured with a powder coated steel frame, medical grade anti-bacterial vinyl, CFC free foam and a long warranty adds to the build quality.



Whiteley Diagnostic Pty Ltd
T/as **INTERAKTIV HEALTH**
Unit 17, 5 Vuko Place
Warriewood. NSW 2102
Telephone: 1300 720 912 or (02) 9641 2888

For more details:

Call 1300 720 912

www.interaktivhealth.com.au

SCANNING TROLLEY

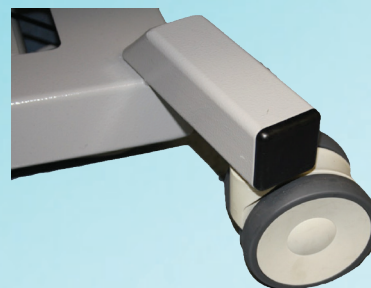
Standard Features:



Electrically Adjustable Backrest with Paper Towel Dispenser



Hands-free Operation of all electric movements

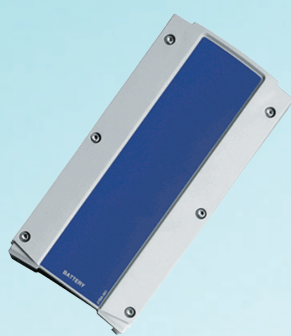


Electric Central Locking 100mm Castors

Optional Extras:



Fold-away Patient Side Rails



Battery DC Backup – Total mobility whilst maintaining beds electrical functions



Hand Operated Switch (Replaces standard foot operated switch)



IV Pole Bracket

Specifications:

Maximum Working Load:	400kg (Stationary)
Maximum Patient Lifting Capacity:	250kg
Minimum Working Height:	450mm
Maximum Working Height:	950mm
Table Width:	610mm
Table Length:	1840mm
Controller:	6 Button Foot Switch
Backrest:	Electrically Adjustable +70°
Castors:	100mm Diameter
Central Locking Brake:	Electric central locking all 4 castors simultaneously
Paper Towel Roll Dispenser	

CODE: 50122T-6EBCLC



Note: Prices exclude GST and delivery fees.



Whiteley Diagnostic Pty Ltd
T/as **INTERAKTIV HEALTH**
Unit 17, 5 Vuko Place
Warriewood, NSW 2102
Telephone: 1300 720 912 or (02) 9641 2888

For more details:
Call 1300 720 912
www.interaktivhealth.com.au