



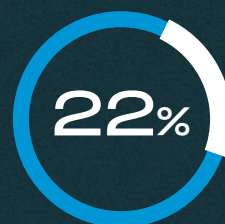
## DEFEND YOUR NETWORK

**WITH THE WORLD'S MOST SECURE LARGE FORMAT PRINTERS<sup>1</sup>**  
Firewalls alone can't withstand attacks from sophisticated hackers. You need the world's most secure large format printers<sup>1</sup> from HP to help protect your devices, data, and documents.



# TABLE OF CONTENTS

PRINTER SECURITY THREATS	03
DEFEND YOUR DEVICES, DATA, AND DOCUMENTS	04
PROTECT YOUR DEVICE	05
PROTECT YOUR DATA	06
PROTECT YOUR DOCUMENTS	07
PROTECT YOUR PRINTING ENVIRONMENT	08
HOW DOES SELF-HEALING WORK?	09
PRINTERS THAT PROTECT, DETECT, AND RECOVER	10
HP PRINTER PORTFOLIO	11-12
COMPETITIVE COMPARISON	13-15



of companies  
monitor printers  
for threats<sup>2</sup>

**“TESTAMENT TO ITS  
LONG-TERM  
INVESTMENT IN PRINT  
SECURITY,  
HP HAS THE BROADEST  
AND DEEPEST  
PORTFOLIO OF  
SECURITY SOLUTIONS  
AND SERVICES  
IN THE MARKET.”**

– Quocirca, Jan 2017 <sup>3</sup>

## PRINTER SECURITY THREATS

### RECOGNIZE HIDDEN RISKS

Although many IT departments rigorously apply security measures to individual computers, printing and imaging devices are often overlooked and left exposed. When there are unsecured devices present, the entire network can be exposed to a cybersecurity attack.

### UNDERSTAND POTENTIAL COSTS

If private information is jeopardized due to unsecured printing and imaging, the ramifications could include identity theft, stolen competitive information, a tarnished brand image and reputation, and litigation. Plus, regulatory and legal noncompliance can result in heavy fines.

### HP CAN HELP

Defend your network with the world's most secure large format printers.<sup>1</sup> HP can help you automate device, data, and document protection with a broad portfolio of solutions.

# DEFEND YOUR DEVICES, DATA, AND DOCUMENTS

Critical gaps can occur at multiple points within your imaging and printing environment. Once you understand these vulnerabilities, you can more easily reduce the risks.



## IMAGING AND PRINTING VULNERABILITY POINTS



### PROTECT YOUR DEVICE



#### CONTROL PANEL

Users can exploit device settings and functions



#### DEFAULT PASSWORD

Printers can come with simple default passwords that can be easily compromised



#### BIOS AND FIRMWARE

Compromised firmware can open a device and network to attack



### PROTECT YOUR DATA



#### STORAGE MEDIA

Printers store sensitive information that can be at risk



#### CAPTURE

Unsecured MFPs can be used to send scans anywhere



#### OUTPUT TRAY

Abandoned documents can fall into the wrong hands



### PROTECT YOUR ENVIRONMENT



#### MANAGEMENT

Undetected security gaps put data at risk



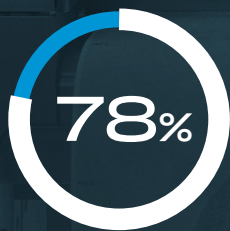
#### NETWORK

Jobs can be intercepted as they travel to/from a device

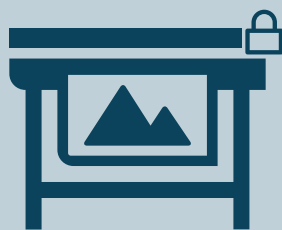


#### PORTS AND PROTOCOLS

Unsecured ports (USB or network) or protocols (FTP or Telnet) put devices at risk



of companies don't monitor their printers for security threats<sup>2</sup>



**PROTECT  
YOUR  
DEVICE**

### HP SECURE BOOT

The BIOS is a set of instructions used to load critical hardware components and initiate firmware during startup. Thanks to HP Secure Boot, the integrity of the code is validated at every boot cycle—helping to safeguard your device from attack.

### WHITELISTING

Whitelisting automatically checks the firmware during startup to determine if it is authentic and digitally signed by HP. If an anomaly is detected, the device shuts down and notifies IT.

### HP CONNECTION INSPECTOR

The HP Connection Inspector inspects outbound network connections typically abused by malware, determines what is normal, and stops suspicious activity. If the printer is compromised, it will automatically trigger a system restart.

### HP TRUSTED PLATFORM MODULE (TPM)

The HP Trusted Platform Module (TPM) strengthens protection of encrypted credentials and data stored on your printer or MFP.

### UNIQUE ADMIN PASSWORD

All printers have a unique admin password by default, so your printer is always password-protected even without setup.

### LDAP/KERBEROS USER AUTHENTICATION

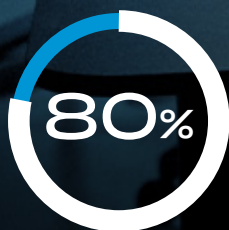
These protocols allow you to authenticate the printer user through the company directory to ensure that the user only accesses authorized options and information.

### ROLE BASED ACCESS CONTROL

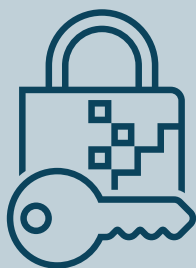
Role Based Access Control allows the administrator to restrict user access to sensitive areas and settings of the printer by configuring different roles and assigning them to such users.

### SECURITY EVENT LOGGING

Provides full visibility to quickly detect malicious threats. The security log records each event as defined by the audit policies set on each object.



of organizations reported at least one type of security threat/breach, either external or internal, within the last 18 months<sup>2</sup>



**PROTECT  
YOUR  
DATA**

## AT REST

### SELF-ENCRYPTED HARD DRIVE

Protects sensitive business information stored on the hard drive with built-in encryption.

### SECURE FILE ERASE

Ensures that no data is left behind in the printer after your files are deleted from the hard disk.

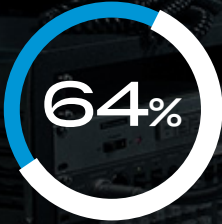
### SECURE DISK ERASE

Erases all information from the printer's hard disk, making it impossible to recover sensitive data.

## IN TRANSIT

### ENCRYPTED COMMUNICATIONS

Standard encryption protocols 802.1x or IPSec use encrypted network standards to protect data traveling over the network.



of organizations expect an increase in security threats/breaches over the next 3 years<sup>2</sup>



## PROTECT YOUR DOCUMENTS

### PULL PRINTING

Celiveo Enterprise is a fully integrated secure printing and tracking solution.<sup>4</sup> This access control-based function has end-to-end tracking and reporting to protect sensitive information and media, and reduce unclaimed print jobs. It helps boost productivity and keep abandoned documents from falling into the wrong hands. HP large format printers are also compatible with other third-party pull printing solutions.

### ENCRYPTED PIN PRINTING

When users send confidential print jobs, they can assign a PIN to the document on the printer driver. The document will then be held in the printer until the user enters the PIN at the device. This way the user can be sure their confidential document won't be left unattended. With encrypted PIN printing, document data is encrypted when the document is sent to the printer to protect document confidentiality through the network.

Security monitoring and management solutions can help you identify vulnerabilities and establish a unified, policy-based approach to protect data, reduce risk, and maintain compliance. Prevent protection gaps and help avoid costly fines.<sup>2</sup>



**PROTECT  
YOUR  
PRINTING  
ENVIRONMENT**

**UPDATE DEVICES WITH  
THE LATEST FIRMWARE/OS**

HP JetAdvantage Security Manager helps you reduce cost and resources to establish a fleet-wide security policy, automate device settings remediation, and install and renew unique certificates.<sup>5</sup> The Instant-on Security feature included with HP JetAdvantage Security Manager automatically configures new devices when added to the network or after a reboot.

**COMPLIANCE AUDIT REPORTING  
OF PRINT FLEET SECURITY**

Use HP JetAdvantage Security Manager to create proof-of-compliance reports that demonstrate the application of security policies to printers and the securing of customer data.

**COMPLIANCE INFRINGEMENT  
CAN HURT YOUR BUSINESS**

Unprotected or under-protected endpoints create more opportunity for cybercrime. To help counter the growing threat, government bodies across the globe are implementing strict security regulations that require organizations to better protect customer information. It's crucial to deploy devices and solutions—like HP DesignJet printers and HP JetAdvantage Security Manager—that can help you meet compliance requirements and protect your business information from security threats.



# HOW DOES SELF-HEALING WORK?

HP Security Manager runs a four-step security check cycle to keep your device secure





**PRINTERS  
THAT PROTECT,  
DETECT,  
AND RECOVER**

## HP LARGE FORMAT PRINTERS

Designed to help reduce risk, improve compliance, and protect your network end-to-end, HP large format printers provide embedded features and add-on solutions that can help you defend your printers and network.



### HP DESIGNJET XL 3600 MFP SERIES

The most immediate, robust<sup>6</sup> MFP for demanding environments.

For more information, please visit:

[HP DesignJet XL 3600 MFP series](#)



### HP DESIGNJET T1600 PRINTER SERIES

Meet deadlines with the fastest print speed, and with a radically simple printing experience.

For more information, please visit:

[HP DesignJet T1600 Printer series](#)



### HP PAGEWIDE XL & PRO PRINTER SERIES

The fastest large-format printing.<sup>10</sup> High-quality printing made simple and secure.

For more information, please visit:

[HP PageWide XL Printer series](#)

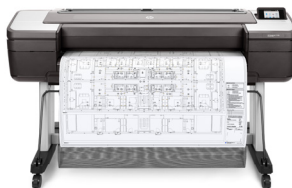


### HP DESIGNJET T2600 MFP SERIES

A seamless experience for unprecedented collaboration, with the best network protection.<sup>1</sup>

For more information, please visit:

[HP DesignJet T2600 MFP series](#)



### HP DESIGNJET T1700 PRINTER SERIES

Empowering HP DesignJet printer for CAD/GIS work groups.

For more information, please visit:

[HP DesignJet T1700 Printer series](#)



### HP DESIGNJET Z6 POSTSCRIPT® PRINTER SERIES

High-definition prints, fast. More quality with fewer inks.

For more information, please visit:

[HP DesignJet Z6 PostScript® Printer series](#)



### HP DESIGNJET Z9+ POSTSCRIPT® PRINTER SERIES

Professional photo prints fast, simple. More quality with fewer inks.

For more information, please visit:

[HP DesignJet Z9+ PostScript® Printer series](#)



### HP DESIGNJET Z6 PRO 64-IN PRINTER

The most precise maps with dual roll productivity.<sup>8</sup>

For more information, please visit:

[HP DesignJet Z6 Pro Printer](#)



### HP DESIGNJET Z9+ PRO 64-IN PRINTER

Highest professional photo quality at top production speed.<sup>9</sup>

For more information, please visit:

[HP DesignJet Z9+ Pro Printer](#)

# HP PRINTER PORTFOLIO

	HP DESIGNJET T830 MFP/T730 PRINTERS	HP DESIGNJET T1700 PRINTER	HP DESIGNJET T1600/T2600 PRINTERS	HP DESIGNJET XL 3600 PRINTER SERIES	HP DESIGNJET Z6 & Z9* PRINTER SERIES	
<b>DEVICE</b>	HP Secure Boot		●	●	●	
	UEFI Secure Boot		●	●	●	
	Connection Inspector					
	Whitelisting		●	●	●	
	Unique Admin Password					
	TPM			●	●	
	LDAP/Kerberos User Authentication			●	●	
	Role Based Access Control		●	●	●	
	Front Panel Access Lock					
	Security Event Logging			●	●	
	SNMP v3 Compatibility	●	●	●	●	●
<b>DATA</b>	Self-encrypted HDD		●	●	●	
	Removable HDD					
	No HDD	●				
	IPSec Compatibility		●	●	●	●
	TLS/SSL	●	●	●	●	●
	Secure File Erase		●	●	●	●
	Secure Disk Erase		●	●	●	●
	802.1x Compatibility	●	●	●	●	●
	NTLMv2		●	●	●	●
	Encrypted PIN Printing			●	●	
	IPv4 & IPv6 Compatibility	●	●	●	●	●
CA/JD Certificates		●	●	●	●	
Disable Interfaces	●	●	●	●	●	
<b>DOCUMENT</b>	PIN Printing	●	●	●	●	
	Integrated Celiveo Enterprise Solution			●	●	
	Integrated API Netgard <sup>6</sup> MFD		●	●	●	
<b>FLEET SECURITY MANAGEMENT</b>	HP Web JetAdmin <sup>7</sup>	●		●	●	
	HP JetAdvantage Security Manager	●		●	●	
	SIEM Integration			●	●	

# HP PRINTER PORTFOLIO

	HP DESIGNJET Z6 PRO & Z9* PRO 64-IN PRINTERS	HP DESIGNJET Z6810 42-IN PRINTER	HP PAGEWIDE XL	HP PAGEWIDE XL PRO
<b>DEVICE</b>	HP Secure Boot	●		●
	UEFI Secure Boot	●		●
	Connection Inspector	●		●
	Whitelisting	●		●
	Unique Admin Password			●
	TPM	●		●
	LDAP/Kerberos User Authentication	●		●
	Role Based Access Control	●		●
	Front Panel Access Lock		●	●
	Security Event Logging	●		●
	SNMP v3 Compatibility	●		●
<b>DATA</b>	Self-encrypted HDD	●	●	●
	Removable HDD			●
	No HDD			●
	IPSec Compatibility	●	●	●
	TLS/SSL	●	●	●
	Secure File Erase	●	●	●
	Secure Disk Erase	●	●	●
	802.1x Compatibility	●	●	●
	NTLMv2	●		●
	Encrypted PIN Printing	●		●
	IPv4 & IPv6 Compatibility	●	●	●
CA/JD Certificates	●	●	●	
Disable Interfaces	●	●	●	
<b>DOCUMENT</b>	PIN Printing	●	●	●
	Integrated Celveo Enterprise Solution			●
	Integrated API Netgard <sup>6</sup> MFD			●
<b>FLEET SECURITY MANAGEMENT</b>	HP Web JetAdmin <sup>7</sup>	●	●	●
	HP JetAdvantage Security Manager	●	●	●
	SIEM Integration			●

# COMPETITIVE COMPARISON

	RICOH CW 22001 SP	KIP 600/700/800/900 SERIES	KIP 7172	CANON CW 3500	CANON CW 3600/3800/9000	OCÉ CW 910	
<b>DEVICE</b>	HP Secure Boot <sup>(a)</sup>				●		
	HP Connection Inspector <sup>(a)</sup>						
	Whitelisting <sup>(a)</sup>	●		●	●		
	Unique Admin Password <sup>(a)</sup>						
	TPM <sup>(a)</sup>				●	●	
	LDAP/Kerberos <sup>(a)</sup>	●			●	●	
	User Authentication <sup>(a)</sup>	●		●			
	Role Based Access Control <sup>(a)</sup>	●	●	●	●	●	
	Front Panel Access Lock <sup>(a)</sup>	●	●	●	●	●	
	Security Event Logging <sup>(a)</sup>				●	●	
<b>DATA</b>	Disable Network Ports and Protocols <sup>(a)</sup>	●		●	●		
	SNMP v3 <sup>(a)</sup>				● <sup>(k)</sup>		
	Self-encrypted HDD <sup>(a)</sup>	●	●		●	●	
	IPSec <sup>(a)</sup>	●	●	●	●	●	
	TLS/SSL <sup>(a)</sup>	●	●	●	●	●	
	Secure File Erase <sup>(a)</sup>	●	●	● <sup>(d)</sup>	● <sup>(d)</sup>	● <sup>(j)</sup>	● <sup>(d)</sup>
	Secure Disk Erase <sup>(a)</sup>	●	●	● <sup>(d)</sup>	● <sup>(d)</sup>	●	● <sup>(d)</sup>
	802.1x Compatibility <sup>(a)</sup>	●				●	●
	NTLMv2 <sup>(a)</sup>	●			● <sup>(e)</sup>		
	Encrypted PIN Printing <sup>(a)</sup>		●				
<b>DOCUMENT</b>	Integrated Pull Printing Solution <sup>(f)(a)</sup>	● <sup>(g)</sup>	●	● <sup>(g)</sup>	● <sup>(g)</sup>	● <sup>(g)</sup>	
	PIN Printing <sup>(a)</sup>	●	●	●			
<b>FLEET</b>	Security Policy-based Fleet Management <sup>(a)</sup>						
	SEM Integration <sup>(a)</sup>				●		

(a) Security features of competitive printers that are not reflected in this table is because they are not specified in any of their datasheets/brochures. Not specified in datasheet/ brochure

(b) IEEE802.1x enable/disable

(c) Not available on the TM

(d) e-shredding/e-shredding [DoD 5220.22-M]

(e) NTLMv1

(f) Celiveo + API Netgard® MFD

(g) Only Netgard

(h) Only 3600 and 3800 have v3, while CW 9000 has v2

(i) Version 1.3, while all others have Version 1.2

(j) Secure File Erase and Secure Disk Erase are available only in 3600 and 3800; not available in 9000

(k) HP has integration with Celiveo and API Netgard. Canon, Ricoh, and KIP have it only with Netgard

(l) It is not possible to configure different roles and assign them to different users. Only administrator password

(m) Menu access level is able to configure by multiple PINs

(n) Printer's serial number is used as the password

(o) Device unlocked by PIN

(\*\*) Limited to 2 users

# COMPETITIVE COMPARISON

	CANON PW 3000/5000/7500 SERIES	OCÉ PLOTWAVE 345 & 365	CANON IPF TZ-SERIES TZ-30000	CANON COLORADO 1650	CANON IPF TX-SERIES TX-2100/3100/4100	CANON IPF TX-SERIES TX-2000/3000/4000
<b>DEVICE</b>	HP Secure Boot <sup>(a)</sup>	●				
	HP Connection Inspector <sup>(a)</sup>					
	Whitelisting <sup>(a)</sup>	●			NA	
	Unique Admin Password <sup>(a)</sup>			●	NA	● <sup>(n)</sup>
	TPM <sup>(a)</sup>	●	●		NA	
	LDAP/Kerberos <sup>(a)</sup>	●	●		NA	
	User Authentication <sup>(a)</sup>	●	●		NA	
	Role Based Access Control <sup>(a)</sup>	●		●	NA	●
	Front Panel Access Lock <sup>(a)</sup>	●		●	NA	●
	Security Event Logging <sup>(a)</sup>	●			NA	
<b>DATA</b>	Disable Network Ports and Protocols <sup>(a)</sup>	●	●	●	NA	●
	SNMP v3 <sup>(a)</sup>	●		●	NA	●
	Self-encrypted HDD <sup>(a)</sup>		●	●	NA	●
	IPSec <sup>(a)</sup>	●	●	●	NA	●
	TLS/SSL <sup>(a)</sup>	●		●	NA	●
	Secure File Erase <sup>(a)</sup>	●	● <sup>(d)</sup>	●	NA	●
	Secure Disk Erase <sup>(a)</sup>	●	● <sup>(d)</sup>	●	NA	●
	802.1x Compatibility <sup>(a)</sup>	●		●	NA	●
	NTLMv2 <sup>(a)</sup>		● <sup>(e)</sup>		NA	
	Encrypted PIN Printing <sup>(a)</sup>				NA	
<b>DOCUMENT</b>	Integrated Pull Printing Solution <sup>(f)(a)</sup>			NA		
	PIN Printing <sup>(a)</sup>			●	●	
<b>FLEET</b>	Security Policy-based Fleet Management <sup>(a)</sup>			NA		
	SEM Integration <sup>(a)</sup>			NA		

(a) Security features of competitive printers that are not reflected in this table is because they are not specified in any of their datasheets/brochures. Not specified in datasheet/ brochure

(b) IEEE802.1x enable/disable

(c) Not available on the TM

(d) e-shredding/e-shredding [DoD 5220.22-M]

(e) NTLMv1

(f) Celiveo + API Netgard® MFD

(g) Only Netgard

(h) Only 3600 and 3800 have v3, while CW 9000 has v2

(i) Version 1.3, while all others have Version 1.2

(j) Secure File Erase and Secure Disk Erase are available only in 3600 and 3800; not available in 9000

(k) HP has integration with Celiveo and API Netgard. Canon, Ricoh, and KIP have it only with Netgard

(l) It is not possible to configure different roles and assign them to different users. Only administrator password

(m) Menu access level is able to configure by multiple PINs

(n) Printer's serial number is used as the password

(o) Device unlocked by PIN

(\*\*) Limited to 2 users

# COMPETITIVE COMPARISON

## DEVICE

	CANON IPF TM-SERIES TM-205/305	CANON IPF PRO-SERIES PRO-2100/4100/6100	EPSON SC-T SERIES T7700D/T5700D/T3700D	EPSON SC-P20000	EPSON SC-P SERIES P8500D/P6500D
HP Secure Boot <sup>(a)</sup>			●		●
HP Connection Inspector <sup>(a)</sup>					
Whitelisting <sup>(a)</sup>			●		●
Unique Admin Password <sup>(a)</sup>	● <sup>(n)</sup>	● <sup>(n)</sup>			
TPM <sup>(a)</sup>			●		●
LDAP/Kerberos <sup>(a)</sup>			●		●
User Authentication <sup>(a)</sup>			●		●
Role Based Access Control <sup>(a)</sup>	○ <sup>(l)</sup>	○ <sup>(l)</sup>	● <sup>(m)</sup>		● <sup>(m)</sup>
Front Panel Access Lock <sup>(a)</sup>	●	●	●		●
Security Event Logging <sup>(a)</sup>			●		●
Disable Network Ports and Protocols <sup>(a)</sup>	●	●	●	●	●
SNMP v3 <sup>(a)</sup>	●	●	●	●	●

## DATA

Self-encrypted HDD <sup>(a)</sup>		●	●		●
IPSec <sup>(a)</sup>	●	●	●		●
TLS/SSL <sup>(a)</sup>	●	●	●	●	●
Secure File Erase <sup>(a)</sup>	●	●	●		●
Secure Disk Erase <sup>(a)</sup>	●	●	●		●
802.1x Compatibility <sup>(a)</sup>	●	●	●	●	●
NTLMv2 <sup>(a)</sup>					
Encrypted PIN Printing <sup>(a)</sup>					

## DOCUMENT

Integrated Pull Printing Solution <sup>(f)(a)</sup>					
PIN Printing <sup>(a)</sup>		●			

## FLEET

Security Policy-based Fleet Management <sup>(a)</sup>					
SEM Integration <sup>(a)</sup>			●		●

(a) Security features of competitive printers that are not reflected in this table is because they are not specified in any of their datasheets/brochures. Not specified in datasheet/ brochure

(b) IEEE802.1x enable/disable

(c) Not available on the TM

(d) e-shredding/e-shredding [DoD 5220.22-M]

(e) NTLMv1

(f) Celiveo + API Netgard® MFD

(g) Only Netgard

(h) Only 3600 and 3800 have v3, while CW 9000 has v2

(i) Version 1.3, while all others have Version 1.2

(j) Secure File Erase and Secure Disk Erase are available only in 3600 and 3800; not available in 9000

(k) HP has integration with Celiveo and API Netgard. Canon, Ricoh, and KIP have it only with Netgard

(l) It is not possible to configure different roles and assign them to different users. Only administrator password

(m) Menu access level is able to configure by multiple PINs

(n) Printer's serial number is used as the password

(o) Device unlocked by PIN

(\*\*) Limited to 2 users



DEFEND YOUR NETWORK  
WITH THE WORLD'S MOST SECURE  
LARGE FORMAT PRINTERS<sup>1</sup>





## SIGN UP FOR UPDATES DESIGNJET SECURITY

### SHARE WITH YOUR COLLEAGUES

1. Applicable to the HP DesignJet T1700 Printer series, HP DesignJet Z9\* PostScript® Printer series, HP DesignJet Z6 PostScript® Printer series, HP DesignJet Z9\* Pro Printer , HP DesignJet Z6 Pro Printer series, HP DesignJet XL 3600 Multifunction Printer series, HP DesignJet T2600 Multifunction Printer series, HP DesignJet T1600 Printer series, HP PageWide XL Printers, and HP PageWide XL Pro Printers. Advanced embedded security features are based on HP review of 2021 published embedded security features of competitive printers, as of March 2021.
2. Spiceworks survey of 501 IT decision-makers in North America, EMEA, and APAC, on behalf of HP, June 2018.
3. Quocirca, "Print security: An imperative in the IoT era," quocirca.com/content/print-security-imperative-iot-era, January 2017.
4. The HP DesignJet T1700 Printer series, Z9\* and Z6 PostScript® Printer series, and HP PageWide XL printers include the fully integrated Celiveo Enterprise Solution.
5. HP JetAdvantage Security Manager must be purchased separately. To learn more, please visit [hp.com/go/securitymanager](http://hp.com/go/securitymanager).
6. Based on comparable printers using LED technology and capable of printing 4-6 D/A1 pages per minute and which represent more than 70% of the share of low-volume LED printers in the US and Europe according to IDC as of November 2018. Fastest first page out and up to 10 times less energy consumption based on internal HP testing for specific use scenarios. Operational costs based on low-volume LED technology under \$17,000 in the market as of November 2018. Operational costs consist of supplies and service costs. For testing criteria, see [hp.com/go/designjetxlclaims](http://hp.com/go/designjetxlclaims).
7. HP Web JetAdmin is available for download at no additional charge at [hp.com/go/webjetadmin](http://hp.com/go/webjetadmin).
8. Highest precision based on testing commissioned by HP and performed by Sogeti in March 2021 comparing the HP DesignJet Z6 Pro 64-in Printer and comparable competitive printers that represent the majority market share worldwide as of 2020 according to IDC, by comparing the minimum distance between two lines necessary to correctly reproduce the lines (the lower the distance, the higher the precision) printing on coated paper and Normal mode. Dual roll option must be purchased separately.
9. Highest professional photo quality based on widest color gamut. Testing commissioned by HP and performed by Sogeti in January 2021 comparing the HP DesignJet Z9\* Pro 64-in Printer and comparable competitive printers that represent the majority market share worldwide as of 2020 according to IDC, comparing gamut volume in CIE Lab units (the higher, the better) printing on HP Premium Instant-dry Satin Photo Paper and Best mode. Test performed under the same conditions in all printers measuring the TC9.18 target with the i1 spectrophotometer from X-rite.
10. Based on testing commissioned by HP and performed by Sogeti in October, 2020. Fastest compared to alternatives for large-format printing of technical documents, GIS maps, and point-of-sale (POS) posters under \$200,000 USD as of October, 2020. Fastest response compared to the HP PageWide XL Pro 5200 Multifunction Printer.

© Copyright 2021 HP Development Company, L.P. The information contained herein is subject to change without notice. The only warranties for HP products and services are outlined in the express warranty statements accompanying such products and services. Nothing herein should be construed as constituting an additional warranty. HP shall not be liable for technical or editorial errors or omissions contained herein.