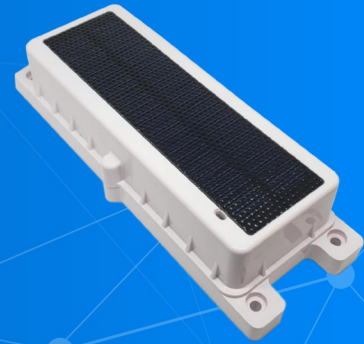


BeSol+

BeSol+ is part of a complete end-to-end asset tracking solution. Utilizing the latest in LTE-M/NB Cellular technology, the BeSol has very low power consumption and long battery life so you can track, monitor and manage a wide variety of durable and perishable assets like never before.



Key Features

- LTE CAT M1 / CAT NB1/NB2 / 2G Communication
- Off-the-shelf deployment with near real-time tracking
- Motion tracking, triggering updates
- IP69K rugged and dust / waterproof enclosure
- Can monitor temperature, humidity, pressure, light, and motion
- Ultra-low power platform
- Rechargeable, long battery life (5+ years with higher resolution updates)
- Full coverage (deep indoor and rural areas)

Technical Specifications

Physical

Dimensions: 152 x 64 x 40 mm

Weight: 0.8 lb

Certifications

CTIA (PTCRB /OTA), FCC/IC

Battery

Rechargeable Lithium-Ion battery 3.8 V nominal; 4.20 4.20±0.02V charge capacity, 7000 mAh capacity.

3500 messages from max charge 4.2V to 3.5V app cut-off voltage

64 hours charge time with uninterrupted bright sunlight from fully drained to be fully charged 4.2V

Environmental

Temperature: -20° to +60° C

Humidity: 95%RH @ 50° C non-condensing

Vibration and Shock: MIL STD 810G

Ingress Protection: IP68/IP69K



www.rastrac.com

sales@rastrac.com

(877) 680-1188

©2024 Manning NavComp, Inc. All rights reserved. Rastrac is a registered trademark of Manning NavComp, Inc. All other trademarks are the property of their respective owners. The BeSol+ is a product of BeWhere, Inc.