

Before you start

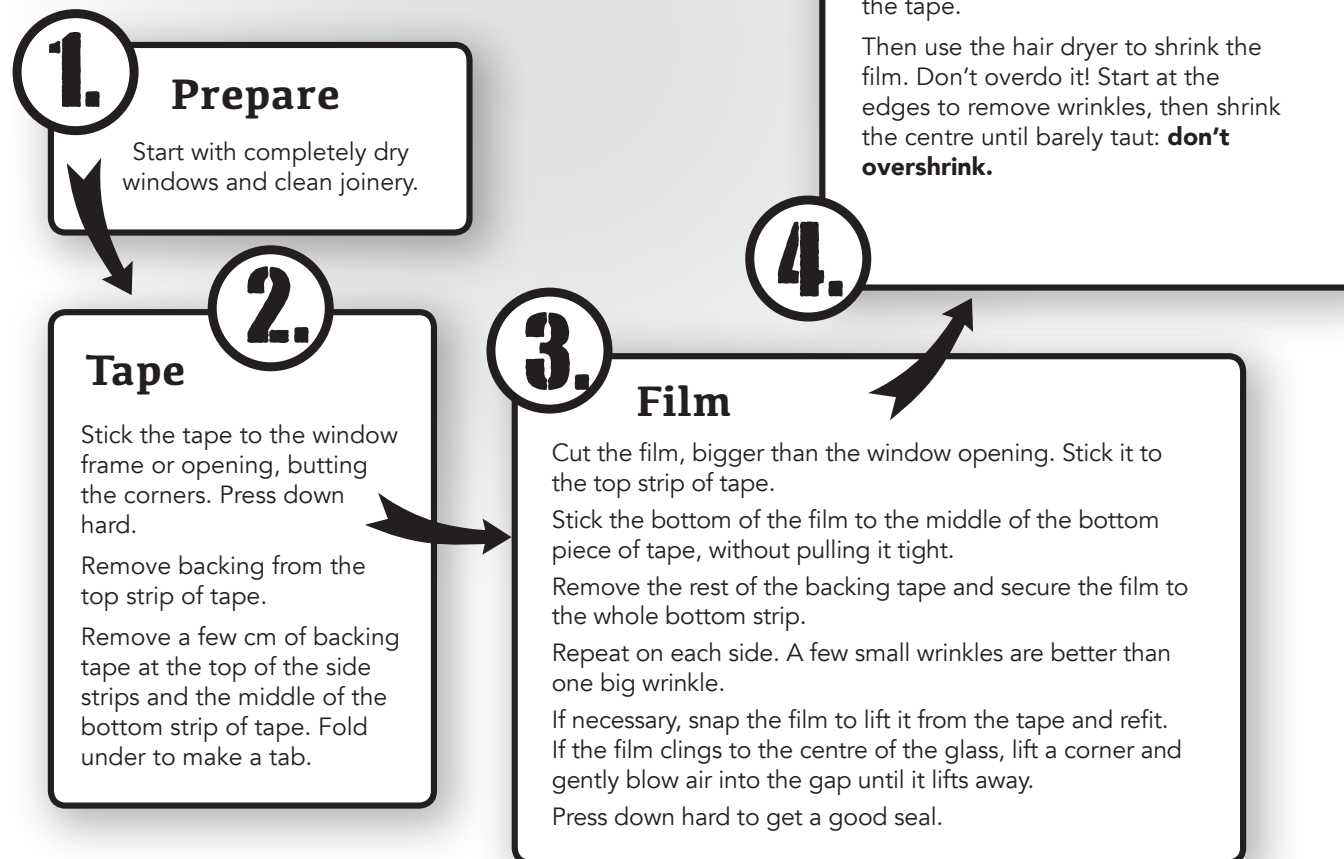
- Clean your window glass thoroughly, especially the inside.
- Windows must be completely dry and air temp above 14C.
- If you get lots of dust on the inside of the film, you'll look at it for the rest of its life. If you care about this, wipe down your table or do a quick vacuum before unpacking the film.
- Do you need to remove window latches? Check you have the tools to do so. (Often you can tape around them instead.)
- Measure your windows.
- Decide where to start: we suggest with a smaller, inconspicuous window.
- Wash and dry your hands (so no fingerprints on the film or oil on the bonding tape).

Have at hand

- measuring tape or long ruler
- meths and a clean rag
- clean, dust-free long table or floor area
- scissors
- utility knife
- stepladder or stool
- hair dryer and extension cord

quick start guide

(but better to read the full instructions overleaf)



Space Window Insulation

insulates like double glazing, at a fraction of the cost



Installation Guide

Preparation is key. If you want the kit to last a long time and look its best, read the instructions carefully and invest in the preparation we recommend.

1.

Prepare the window

... so the bonding tape sticks well to the window frame.

Aluminium joinery: Easy. Make sure the frame is clean, free from mould and completely dry. Wiping down with meths works well.

Wood: Unpainted wood or paint in good condition — as for aluminium.

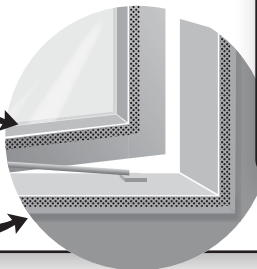
If wooden joinery has been oiled, ensure it has properly cured.

If paintwork is in poor condition ie loose/flaking, you have two choices:

1. Sand, repaint, leave the paint to cure completely.
2. Knock off loose chips, vacuum up any dust and grit and accept that when you eventually remove the bonding tape it may take off more paint. Then use meths, as above.

Apply bonding tape around the edge of the sash to allow window to open.

Rarely, you might choose to seal off window completely.



2.

Apply the tape

Apply the bonding tape to the four sides of the window opening, butting the corners. Press down hard on the backing tape to fix it firmly in place.

If you're working around window latches etc, carefully cut around the edges as shown in our installation video.

Remove the backing from the top piece of tape. Try to avoid touching the adhesive surface.

Remove 5–10cm of backing tape from the top of each side strip of tape, and twist them under and out to make easy-to-handle tabs.

Carefully cut through just the backing layer in the middle of the bottom strip of tape. Lift up and peel back the backing tape from the cut edge, making short tabs as you did for the sides.

make easy-to-handle tabs

3.

Fit the film

Unfold film. Keep well away from children.

Film is closely folded lengthwise. If necessary, use a piece of sticky tape on each side to separate the layers. !

Refer to your measurements. Cut a piece of film 20–30 cm bigger than your window. Cut straight.

Avoid touching the inside of the film as much as possible.

Fix the top two corners of the film to the top strip of tape, making sure the film covers both sides of the window all the way down.

Tap the film to the bottom strip of tape where the adhesive is exposed.

Remove the backing from the entire bottom strip of tape and fix the film. Repeat on each side.

If you make a mistake positioning the film, snap it off the bonding tape with a decisive movement and try again. !

On a large window, the film may cling to the centre of the glass. Fix this by lifting a corner of the plastic and blowing air into the space between the film and glass.

A few small wrinkles are easier to remove when you shrink the film than one large wrinkle. !

All good? **Now press the film very firmly onto the tape.**

4.

Trim and shrink

Trim the window film right to the outside edge of the tape with a utility knife. Pull the film taut, puncture it with the blade and run the blade gently down/along the edge of the tape.

Take care with this bit. If you want a near-invisible result, it's important to trim neatly and right to the edge of the tape. !

Start up your hairdryer. No, stop. Read this: **do not over-shrink the film.** You can pull it right off the tape and have to start again. Shrink the film only enough to remove wrinkles.

Start with your hairdryer's lowest setting and turn it up only if needed. Work close, about 2cm from the surface of the film. Don't stay in one place. Shrink the edges to remove wrinkles, then shrink the centre until barely taut.

Don't touch the hairdryer to the film.

If you wait 24 hours to shrink or finish shrinking the film, the bonding tape will cure and the bond strengthen. !

Check out videos and photos of installation at www.warmhealthyhome.co.nz

