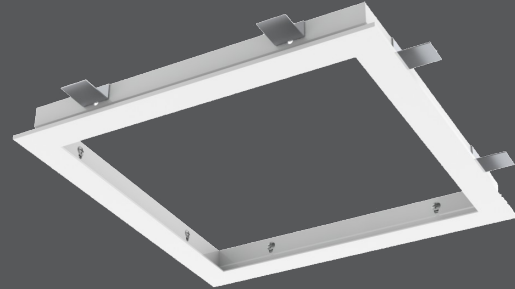


Mounting Frames

TRM / TRM-S

- Model TRM Titus Rapid Mount Frame allows T-bar, lay-in type diffusers (border Type 3) to be installed in surface mounting applications (border Type1)
- TRM frame is installed in opening and secured in place using security clips. Screws are mounted flush in frame mounting holes.
- Rapid Mount Frame can be mounted in plaster or sheet rock ceiling
- The TRM can be used to access ceiling plenum. Diffuser with flex connection can be lifted out of frame to access ceiling space.
- Material is aluminum with steel fasteners



TRM / TRM-S



mounting frames

AVAILABLE MODELS:

TRM / Aluminum
TRM-S / Steel

FINISHES

Standard Finish - #26 White
Optional Finishes - #01 Aluminum / #04 Mill



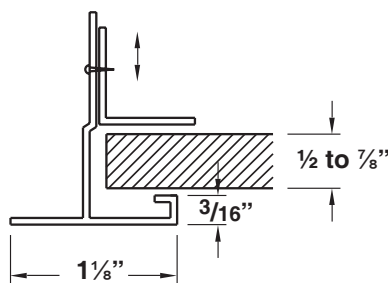
See website for Specifications

OVERVIEW

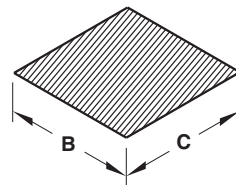
Rapid Mount

Titus mounting frames make installation of grilles, diffusers and other ceiling components in plaster and sheet rock ceilings as simple as inserting them in a standard T-bar type ceiling. For typical applications, the frame has adjustable fastening clips which adapt to a variety of plaster and sheet rock ceiling thicknesses.

Note: For plaster and sheet rock ceilings



Ceiling Opening View



Update available module sizes and dimensions per submittal update

*Check actual dimensions of ceiling opening before installation