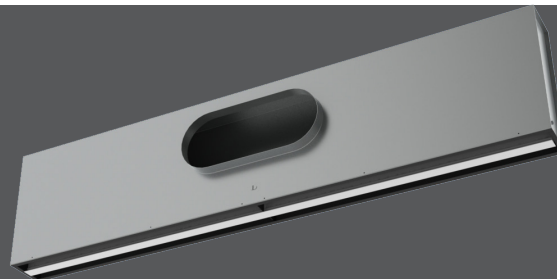


TBD-80

- The TBD-80 slot diffuser is outstanding for its flexibility in both installation and performance
- The direction of airflow is adjustable through a full 180° from the face of the diffuser. In addition, the TBD-80 is available with 1 to 4 slots and with three different slot widths, for a broad range of capacities.
- The TBD-80 works with many types of ceiling systems—plaster, splined, and regressed, as well as standard lay-in
- When set for a horizontal discharge, the TBD-80 projects a tight blanket of air across the ceiling from minimum to maximum flow. TBD-80 provides excellent VAV performance.
- An important advantage of this diffuser is in the gasket edged blade. In the horizontal discharge setting, either right or left, the gasket at the top of the pattern controller seats against the inside of the diffuser plenum wall or slot divider, assuring pure horizontal flow. The pattern controller can also be set for vertical flow.



TBD-80



open ceiling

AVAILABLE MODELS:

TBD-80 / Supply
TBDI-80 / Supply / Insulated

FINISHES

Standard Finish - #26 White on center T-bars and optional side T-bars.
#84 Black on exposed surfaces.

OVERVIEW

Gasketed Blade / 1 & 2 Slots, 8" / 3 & 4 Slots, 11"

Titus TBD series plenum slot diffusers provide flexibility, great performance and ease of installation. Their adjustability and streamlined appearance make them the industry standard for plenum slot diffusers. The TBD-80 works with many types of ceiling systems - plaster, splined, regressed, and standard lay-in.

ADVANTAGES

- Standard diffuser heights are 8" for the 1- and 2-slot diffusers; and 11" high for the 3- and 4-slot diffusers
- Double metal thickness at slot face for rigidity and straightness
- Available with seven arrangements of optional factory installed T-bars
- Choice of ¾", 1" or 1½" slot widths
- Choice of one, two, three, or four parallel slots
- Available in nominal lengths of 24", 36", 48" or 60"
- 24" length has one blade per slot. Lengths 36", 48" and 60" have two pattern controllers per slot, end-to-end.
- Optional internal insulation (end caps are not insulated)
- Optional 11" plenum height for 1- and 2-slot units
- Material is steel with miscellaneous aluminum parts



See website for Specifications