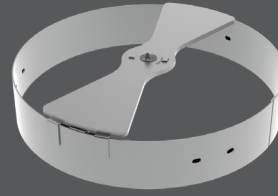
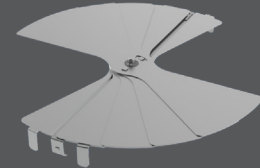


AG-100 / D-100

- Gang operated radial blades slide, each blade over the next, at right angles to the airflow
- Model AG-100 is separately mounted in the duct, just above the diffuser. Adjusts with a screwdriver from the face side of the diffuser.
- Model D-100 is the same as AG-100, but without the mounting ring. Mounts directly on the diffuser neck, flush with the top. Useful in flex duct or where height is limited.
- Galvanized steel material



AG-100



D-100



metric sizes



air balancing

K

AVAILABLE MODELS:

AG-100
D-100

FINISH

Standard Finish - #04 Mill

OVERVIEW

Round Dampers (Sliding Doors)

Effective air balancing begins with the balancing provisions that are designed into the HVAC system. Titus balancing devices are easy to select and specify. They are designed for quick access and adjustment and are engineered for the least possible noise, turbulence and air resistance. Titus makes available published flow factors for all Titus diffusers. This allows precision balancing to be performed in the field with accuracy based on prior test results.

Note: For 6", 8", 10", 12" and 14" Round Necks



See website for Specifications

