

## US301 / US300 (FL / FS)

### US301FL (Single Deflection)

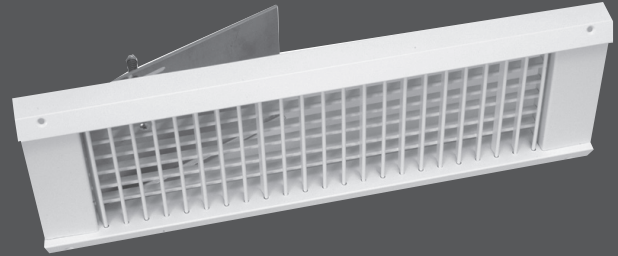
- 3/4" blade spacing
- Individually adjustable blades
- Universal endcaps multiple duct diameters to avoid installation cost of duct taps
- Blades parallel to the long dimension

### US301FS

- Same as US301FL with blades parallel to the short dimension

### US300FL (Double Deflection)

- 3/4" blade spacing
- Individually adjustable blades
- Universal endcaps multiple duct diameters to avoid installation cost of duct taps
- Blades parallel to the long dimension



US301 / US300 (FL / FS)

### US300FS

- Same as US300FL with blades parallel to the short dimension



duct mounted

## AVAILABLE MODELS:

### Single Deflection Models:

US301FL  
US301FS

### Double Deflection Models:

US300FL  
US300FS

## FINISHES

Standard Finish - #26 White or #34 Clear Anodize.

## OVERVIEW

Spiral Grilles mount directly to the duct, eliminating the need for duct taps. They are available in two border styles: S series for radius end cap to match duct diameter, and US (Universal) series which can be used on any duct diameter. Each grille has a gasket to provide a tight seal to the duct.

## PRODUCTS INCLUDE

- Material: Aluminum extruded borders and blades
- Countersunk screw holes and curved end caps
- Foam gasketing standard for tight seal
- Optional ASD-Air scoop device



See website for Specifications