

# SUBMITTAL DATA

## Flexmaster U.S.A.® Square to Round Adapters

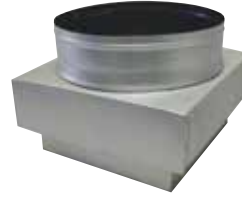
### SHEET METAL FITTINGS



Square to Round



Black Interior



2" Oversized  
Square to Round

The Flexmaster U.S.A.® Square to Round Adapter is manufactured from 26 gauge, or heavier, galvanized steel to meet SMACNA and UMC Standards for commercial construction.

The Square to Round Adapter is manufactured with a standard black interior, depths of 2", 3" and 4" with an open or closed corner. Custom sizes are available upon request.

The Square to Round Adapter should be installed using SMACNA installation standards.

Fitting	Description
F2SO	2" Depth, Square, Open Corner
F2SC	2" Depth, Square, Closed Corner
F3SO	3" Depth, Square, Open Corner
F3SC	3" Depth, Square, Closed Corner
F4SO	4" Depth, Square, Open Corner
F4SC	4" Depth, Square, Closed Corner

(+/-) 1/8" Tolerance on all Sizes

### Standard Features

- Black Interior
- 26 Gauge Primed G-90 Galvanized Steel
- 1/8" Tolerance
- Standard Depth Size: 2", 3", 4"
- Open or Closed Corners

### Optional Features

**Gauge Options: standard 26 ga, black interior not available**

- 24 ga
- 22 ga
- 20 ga

**Corner Options:**

- Open
- Closed

**Construction Options:**

- All seams sealed

**Material Options: black interior not available**

- Aluminum
- Stainless steel

**Size Options:**

- 2" Oversized

Flexmaster U.S.A.®  
5235 Ted Street  
Houston, TX 77040 USA  
Tel. +1.713.462.7694  
Fax + 1.713.939.8441  
www.FlexmasterUSA.com  
www.Masterduct.com

 **FLEXMASTER U.S.A.®**  
A MASTERDUCT COMPANY