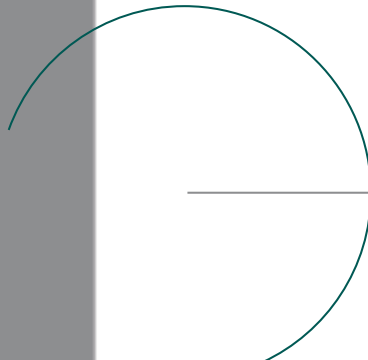
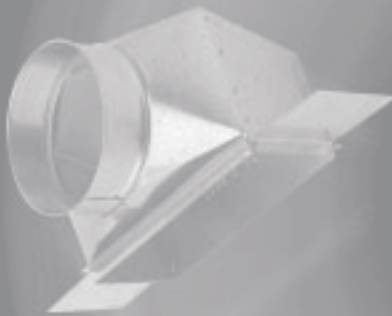


P R O D U C T

C A T A L O G

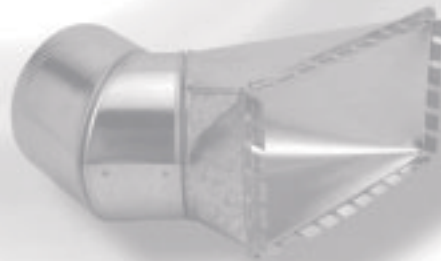
CELEBRATING OVER 100 YEARS
OF QUALITY HVAC SHEET METAL



Seal-Tite[®]

DUCT, PIPE & FITTINGS

*America's Premier
Air Distribution
Systems*



HEATING, AIRCONDITIONING & REFRIGERATION DISTRIBUTORS INTERNATIONAL



INDEX

Tapered Round Pipe	4	Air Filter Frames	9	Oval Elbows/Angles		No. 1726 – 6" Long Top Collar	
24", 5" & 10" Sections	4	<i>Filter Frames</i>		No. 4130 – Horizontal Oval Elbow	14	w/Tabs	17
No. 186 – 6" Pipe Hanger	4	No. 250 – Filter Frame w/o Dovetail	9	No. 4131 – Horizontal Oval Angle	14	No. 1732 – Damper Collar w/Scoop	17
15 1/4" & 19" Joist Bar	4	No. 251 – Filter Frame w/Dovetail – One Side	9	No. 4140 – Vertical Oval Elbow	14	Miscellaneous Accessories	
"Ball-Bearing" Elbows & Angles	4	No. 252 – Filter Frame w/Dovetail – Both Sides	9	No. 4141 – Vertical Oval Angle	14	No. 171 – Stub Collar	17
Adjustable Elbow Four-Piece, 90°	4	No. 254 – Premium Filter Frame	9	Oval Boots		No. 172 – Top Collar	17
Adjustable Angle, Two-Piece, 45°	4	No. 253 – Screw-In Style Filter Frame	9	No. 4244 – Round-to-Oval Boot	14	No. 151 – Boot Cap w/Crimp	17
Take-Off Fittings	5	No. 249 – Filter Frame (Premium Slide-In)	9	No. 4244NC – Round-to-Oval Boot/No Crimp	14	No. 152 – Boot Cap/No Crimp	17
No. 1264 – Universal Take-Off	5	Plenum Chambers	10	No. 4246 – Oval Reverse Boot	14	No. 180-1 – Round Volume	17
No. V1264 – Stick-On Universal Take-Off	5	No. 80 – Down-Flow Plenum	10	No. 4246NC – Oval Reverse Boot/No Crimp	14	No. 180 – Round Volume	17
No. 1261 – Top Take-Off	5	No. 81 – Plenum	10	No. 4247 – Round-to-Oval Straight Boot	14	No. 173 – Damper Collar	17
No. 1262 – Top Take-Off	5	No. 82 – Plenum	10	No. 4247NC – Round-to-Oval Straight Boot/No Crimp	14	No. 175 – Damper Section	17
No. 1268 – High Performance 26 GA, Top Take-Off	5	No. 94 – Plenum	10	No. 4248 – Round-to-Oval Adapter	14	No. 220 – Flue Thimble	17
No. 1265-S – Take-Off Collar	5	No. 212 – Plenum Corners	10	No. 4248NC – Round-to-Oval Straight Boot/No Crimp	14	No. 2223 – Fresh Air Intake	17
Round Take-Offs		Return Air Products	10	Duct Board Fittings	15	No. 154 – Shanty Cap	17
No. 1260-S – Take-Off Adjustable	5	No. 148 – Return Air Connector w/o Dovetail	10	<i>Take-Offs & Collars</i>		No. 184 – Vent Cap w/Wind Band	17
No. 1460-S – Take-Off 1/2 Tab	5	No. 248 – Return Air Connector w/Dovetail	10	No. 1660-S – Duct Board Cone	15	No. 222 – Storm Collar	17
No. 1160-S – Take-Off Includes Damper	5	No. 81100 – Return Air Package	10	No. 1760-S – Duct Board Cone	15	Round Pipe Accessories	18-19
No. 1266 – Take-Off New Style	5	No. 92 – Low Profile Furnace	10	No. 1560-S – Duct Board Cone	15	No. 145 – Adjustable Perimeter Wye	18
Register Boots	6	Wall Stack	11	No. 696 – 90° Duct Board Boot w/Straight Collar	15	No. 146 – Wye Branch	18
No. 1274 – 90° Angle Register Boot	6	12" & 24" Section		No. 697 – 45° Duct Board Boot w/Adjustable Collar	15	No. 324 – Flue Wye	18
No. 1270 – Straight Register Boot	6	Snap-Lock Wall Stack	11	No. 1727 – Duct Board Collar	15	No. 224 – Wye Branch	18
No. 1279 – Basement Register Boot	6	60" & 100" Sections Button-Lock & Sliding Edge Wall Stack	11	No. 1728 – Duct Board Collar w/Damper & Tabs	15	No. 218 – Tee Joint	18
No. 1273-L – Left End Register Boot	6	Stack Angles & Elbows	11	No. 1729 – Duct Board Collar w/Damper, Tabs & Scoop	15	No. 219 – Tee Joint/No Crimp	18
No. 1273 – Center End Register Boot	6	No. 1240-S – Elbow	11	No. 800 – Flex Duct Conductor	15	No. 217 – Tee Joint/Crimp on the run	18
No. 1273-R – Right End Register Boot	6	No. 1241-S – Angle	11	Twist Type Take-Off Connectors for Duct Board	15	No. 153 – Tee Joint Cap	18
New Construction Register Boots		No. 1245-S – Angle	11	No. 1564 – Duct Board Seal-Tite Take-Off	15	No. 123-H-V – Horizontal-Vertical	18
No. 1474 – Register Boot	6	No. 1246-S – Elbow	11	No. 502-WB-C2	15	No. 120 – Vertical	18
No. 1374 – 90° Register Boot	6	No. 1259 – Left Reverse Elbow	11	No. 503-WB-C3	15	No. 121 – Horizontal	18
No. 1370 – Register Boot	6	No. 1253 – Center Reverse Elbow	11	No. 505-WB-EL	15	No. 1286 – Ceiling Diffuser	18
No. 1373-C – Register Boot	6	No. 1258 – Right Reverse Elbow	11	No. 506-WB-D	15	No. 84 – Rails 26" Long	18
Register Pans	6	No. 1200 – Take-Off Collar	11	No. 508-WB-DEL	15	No. 2172 – Ceiling Register Box	18
No. 1170 – Register Boot	6	No. 1250 – Stack Adapter	11	Twist Type Take-Off Connectors for Sheet Metal	16	No. 2172-B – Ceiling Register Box	18
No. 1171 – Register Pan (6")	6	No. 1210 – Wall Stack Cap	11	No. 176 – Take-Off Collars	16	No. 1280 – Less Damper & Chain	19
No. 1172 – Register Pan (10")	6	Stack Heads	12	No. 605-WG-EL	16	No. 190 – Basement Diffuser Tee	19
No. 50 – Duct Register Box	6	No. 1230 – Stack Head	12	No. 604-WG-E	16	No. 191 – Diffuser Tee	19
Rectangular Duct	7	No. 1232 – Stack Head	12	No. 606-WG-D	16	G500 Series Seal-Flex Sleeve & Accessories	19
32", 48", 60" & 96" Sections		No. 1234 – Stack Head	12	No. 607-WG-DE	16	G500 Series Seal-Flex Sleeve	19
w/Button-Lock Seams, "S" Hook & Drive Cleat Connection	7	No. 31 – Dry Wall Frame	12	No. 608-WG-DEL	16	<i>Accessories</i>	
32" 48", 60" & 96" Sections		Wall Stack Boots	12	No. 601-WG-C1	16	No. 700 – Draw Band Type Clamp	19
w/Slide & Drive, "S" Hook & Drive Cleat Connection	7	No. 1214 – Universal Boot	12	No. 602-WG-C2	16	No. 274 – Starter Cones	19
Joist Panning	7	No. 1218 – Elbow Boot	12	No. 603-WG-C3	16	Aluminum Pipe & Fittings	20
No. 207-17, 208-33 – Joist Panning	7	No. 1219-L – Left End Boot	12	No. 179 – Stick-On Take-Off Collar w/Tabs	16	<i>Snap-Lock Pipe</i>	
No. 182 – Volume Damper	7	No. 1219 – Center End Boot	12	No. 181 – Stick-On Take-Off Collar w/Tabs & Damper	16	Straight Pipe	20
No. 185 – Duct Hanger	7	No. 1219-R – Right End Boot	12	No. 302 – Stick-on w/Damper	16	Adjustable Elbows	20
Rectangular Duct Fittings	8	Oval Pipe & Fittings	13	No. 305 – Stick-on Saddle	16	Reducer	20
<i>Duct Elbows & Angles</i>		No. 4245 – Round-to-Oval Long Boot	13	Round Pipe Accessories	17-19	Black Pipe & Fittings	20
No. 1240 – Elbow, Short Way	8	No. 4245NC – Round-to-Oval Long Boot/No Crimp	13	<i>Reducers/Incrasers</i>		<i>Stove Pipe Elbows & Accessories</i>	
No. 1241 – Angle, Short Way	8	No. 4113 – 113" Oval Pipe	13	No. 131 – Taper Increaser	17	24" Black Pipe	20
No. 1245 – Angle, Long Way	8	No. 4100 – 100" Oval Pipe	13	No. 133 – No-Crimp	17	Black Elbow	20
No. 1246 – Elbow, Long Way	8	No. 4060 – 60" Oval Pipe	13	No. 132 – Taper Reducer	17	Black Elbow	20
<i>Duct Reducers</i>		Adapters	13	No. 231 – Short Increaser	17	Taper Reducer	20
No. 1251 – Reducer, 16" Long (Tapered One Side)	8	No. 4212 – Oval Boot Adapter	13	No. 232 – Short Reducer	17	Boot Cap	20
No. V1251 – Reducer, 8" Long (4" + 2" Reduction)	8	No. 4213 – Round-to-Oval Adapter	13	No. 233 – No-Crimp	17	No. 4248 – Round-to-Oval Adapter	20
<i>Duct Adapter</i>		Oval Fittings	14	<i>Connectors Draw Bands</i>		Telescopic Pipe	20
No. 187 – Duct Adapter	8	<i>Oval Top & Side Take-Offs</i>		No. 162 – Snap Type Pipe Connector	17	Tee Joint	20
No. V187 – Duct Adapter	8	No. 4261 – Oval Top Take-Off	14	No. 167 – Draw Bands Bolt Type	17	Trim Collar	20
Insulated Duct, & Fittings	8	No. 4265 – Oval Side Take-Off	14	Collars		Skid Sheet Steel and Heat Transfer Plates	21
No. 215 – Rigid "S" Strip	8	<i>Oval Stackheads & Register Boxes</i>		No. 1724 – 4" Long Top Collar	17	No. XXX	21
No. 209 – Favor-Lox "S" Hook	8	No. 4238 – Oval Stackhead	14	Mobile & Modular Home Applications	21	No. XXX	21
No. 213 – Drive Cleat	8	No. 4270 – Angle Oval Register Box	14	No. 146 – WYE	21	No. 201 – Duct Tap-In Fitting	21
Rectangular Duct Fittings	9	No. 4271 – Oval Register Box	14	No. 200 – Filter Register Box	21	w/Damper	21
No. 1203L – Transition Take-Off	9	<i>Oval Register Boots</i>		Extended Plenum System	22	Reduction System	23
No. 1203 – Transition Take-Off	9	No. 4272 – Straight Oval Register Boot	14	Table of Weights & Gauges	24	Table of Weights & Gauges	24
No. 1230R – Transition Take-Off	9	No. 4273 – End Oval Register Boot	14	Heating Values of Fuels	24	Heating Values of Fuels	24
No. 1210 – Duct Head	9	No. 4274 – 90° Oval Register Boot	14	Fractions & Decimal Equivalents	24	Fractions & Decimal Equivalents	24
No. 1200 – Take-Off Collar	9						
No. 1202 – Take-Off Collar	9						

SealTite®



FOR OVER 100 YEARS... PREMIUM QUALITY DUCT, PIPE & FITTINGS

In the Spring of 1900, the Peck-Williamson Heating Co. commissioned its sheet metal shop in downtown Cincinnati and Seal-Tite® was born.

For over 100 years the finest HVAC technicians and craftsmen have insisted on installing Seal-Tite®, prefabricated galvanized duct, pipe & fittings. These contractors, their wholesalers, and our employees have contributed greatly to the growth and success of Seal-Tite®. As we enter the new millennium and celebrate our centennial we want to thank you and invite you to continue to share in our partnership and success in the future.

For the past century Seal-Tite® has delivered value to our wholesalers, dealers/installers, home-builders, and homeowners by following basic but strong principals. These same principals guide us toward our future:

Principal 1: Our customers come first and we want our partnership to grow.

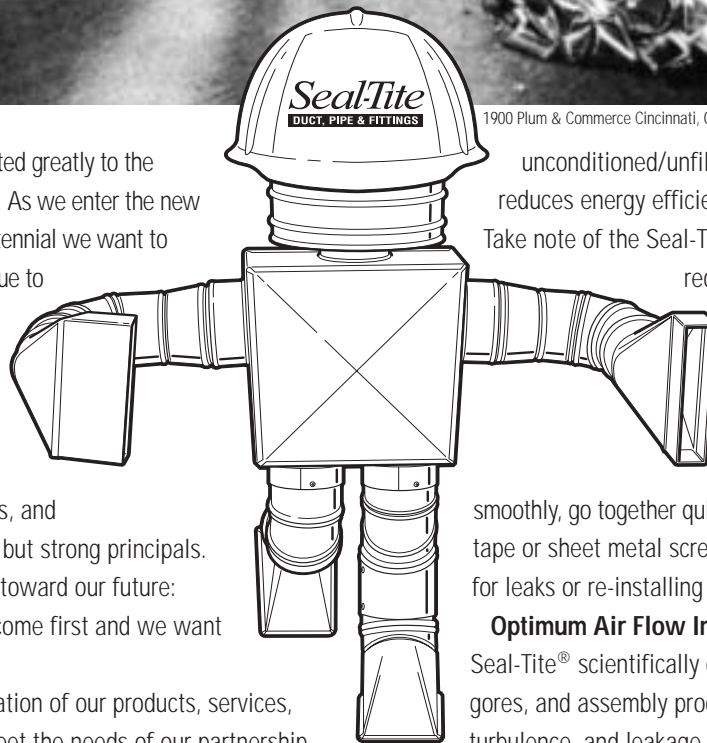
Principal 2: Constant re-creation of our products, services, programs and deliverables to meet the needs of our partnership guarantee success.

Principal 3: Continuous improvement through automation and cost-effective processes, while preserving our time tested design features and benefits will assure our future.

Principal 4: The Seal-Tite® product does make a difference and that is why we have resisted cheapening our product. We are America's Premier Air Distribution System.



1900 Plum & Commerce Cincinnati, Ohio



Seal-Tite® products will always be designed and manufactured for the *energy efficient* distribution of conditioned air while maximizing *indoor air quality* and *comfort*. Our product design adheres to three basic beliefs:

Leakage is bad.

Whether conditioned air escapes the air distribution system or unconditioned/unfiltered air is drawn in, leakage reduces energy efficiency and indoor air quality.

Take note of the Seal-Tite® design features that reduce or eliminate leakage.

Installation Time Does Matter

Seal-Tite® products are designed with the installer in mind. Products adjust

smoothly, go together quickly and stay together without tape or sheet metal screws. No time is wasted looking for leaks or re-installing fittings that have come apart.

Optimum Air Flow Improves Comfort

Seal-Tite® scientifically designed collars, throat radii, gores, and assembly procedures reduce friction, turbulence, and leakage delivering optimum air flow to the Comfort Zone. 16.8% more air with 14.8% less energy does make a difference.

We invite you to review our catalog, take note of our products, their features and their benefits to you and discuss with us our partnership for the 21st century.



Easy Installation

Time is money! On the job tests show Seal-Tite saves time. No lost time wrestling with poorly constructed fittings that won't adjust or stay together. Hand hammered seams, safety edges and internally rolled gores improve safety. Each Seal-Tite fitting mates up perfectly without sheet metal screws or tape. The Seal-Tite certified installer is finished with the job quickly. If it fits right, looks right, stays right and is leak-tite – it's Seal-Tite.

Energy Efficiency

Scientifically designed and handcrafted to reduce turbulence and friction, maximize air flow and eliminate leakage. Seal-Tite air distribution system delivers 16.8% more air volume and requires 14.8% less energy. Why install an energy efficient heating/cooling unit and lose efficiency in air distribution?

Indoor Air Quality

Seal-Tite fittings are constructed of prime grade galvanized metal to prohibit rusting and peeling and are designed to be leak-tite. Consequently, unfiltered air doesn't get in and cold or hot air doesn't get out, and unlike fabric or fibrous duct systems, won't produce dust particles or breakdown over time.

Quiet Operation

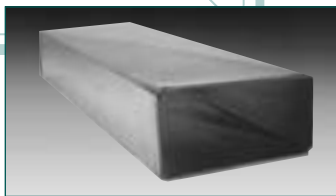
Full gauge metal eliminates "oil canning" noises and leak-tite construction eliminates whisper and whistling. Reduced turbulence and resistance also reduces noise throughout the air distribution system.

Durable Construction with Eye Appeal

Seal-Tite rigid construction, full gauge metal, double lapped, hand hammered seams, streamline modern design and bright galvanized finish provides a clean, modern, finished look. Designed in accordance with A.C.C.A. Can be ordered to SMACNA specifications as well.

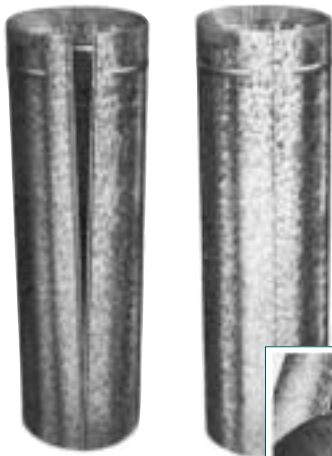
Stocked Locally & Easy Handling

Seal-Tite full-line products are stocked locally by our extensive wholesaler network. Get everything you need from one source of supply. Product is delivered bar-coded, color-coded, cartoned, skidded or racked for ease of handling and minimum space requirements.



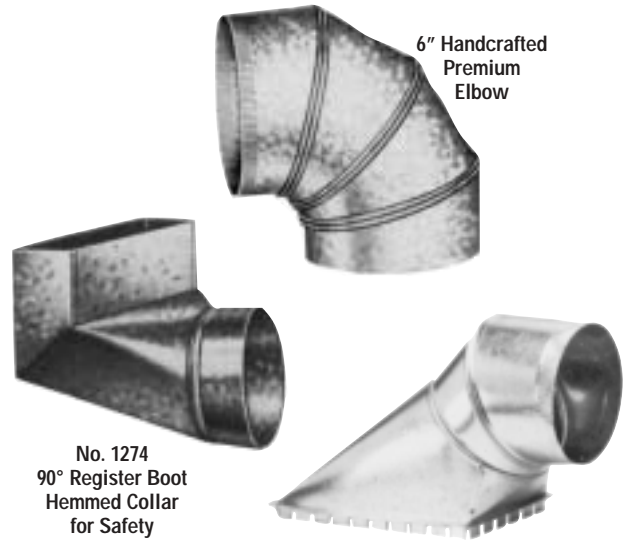
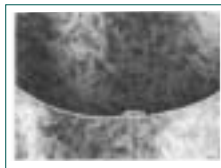
A D I F F E R E N C E !

HAVE INSISTED ON SEAL-TITE PRODUCTS BECAUSE OF THEIR DESIGN FEATURES AND THEIR BENEFITS



Seal-Tite® Snap-Lock Pipe

Seal-Tite® "snap-lock" pipe has a fine crimp, tapered end, and a 2" bearing space which provides a quick, snap-together leak-tite fit without screws or tape saving time, money and energy.

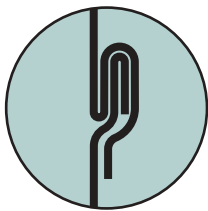


6" Handcrafted Premium Elbow

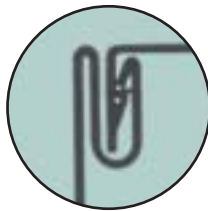
No. 1274 90° Register Boot Hemmed Collar for Safety

No. 1264 Adjustable Take-Off

Seal-Tite® duct, pipe and fittings use seaming and joining technology that is easy to install and take apart, yet stays together snugly producing a leak-tite, durable seam. The Seal-Tite® quality is your guarantee that it will fit right, look right, stay right and be leak-tite.



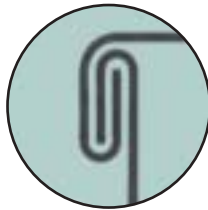
Snap-Lock



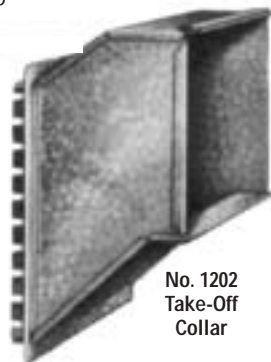
Button-Lock



Sliding Edge



Double Lapped Hand Hammered Construction



No. 1202 Take-Off Collar

Seal-Tite elbows, take-offs, boots and fittings are designed and handcrafted for maximum air flow, minimum air loss and ease of installation. Our adjustable "ball bearing elbow" design provides smooth adjustability and a leak-tite stay together fit. The Seal-Tite exclusive design on elbows, take-off and boot collars reduces turbulence and resistance because air flows over (instead of against) the edges of the interior ridges and eliminates leak path. In addition, their full radius throats maximize air flow. 30 ga. hemmed collars on boots provide for a perfect, sturdy fit-up.



Other manufacturers corners.



Seal-Tite's fully closed corner. Eliminates leakage.

ELIMINATE LEAKS

Our handcrafted fittings have solid, fully closed corners which eliminate leak paths, reduce energy loss, and keep unfiltered unconditioned air from entering the conditioned air distribution system. In addition, our unique handcrafted double lapped, hand-hammered seaming technique provides rigid and leak-tite installation.

Seal-Tite®

TAPERED ROUND PIPE

24", 5' & 10'
Sections



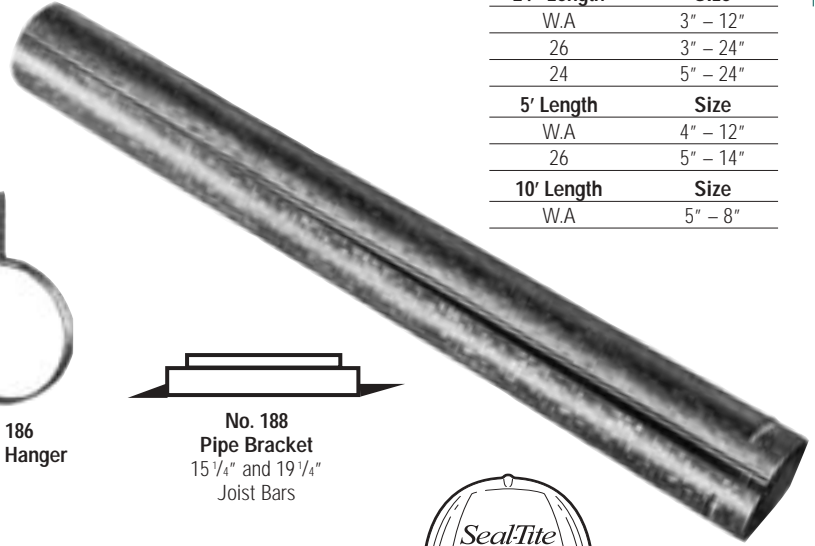
Seal-Tite® Snap-Lock Pipe



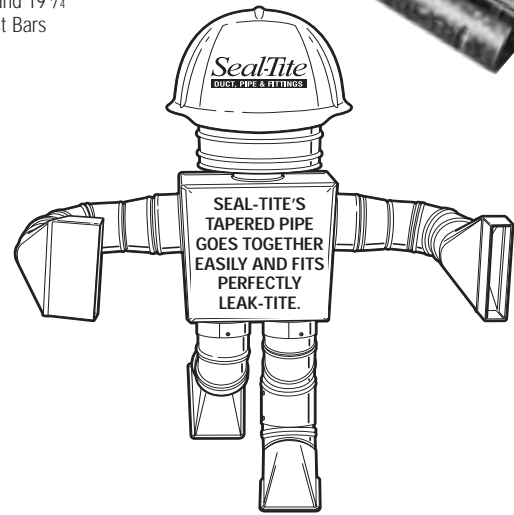
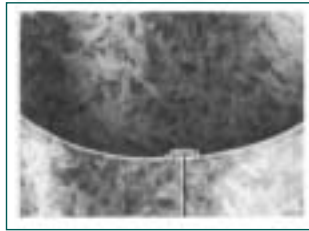
No. 186
6" Pipe Hanger



No. 188
Pipe Bracket
15 1/4" and 19 1/4"
Joist Bars



24" Length	Size
W.A	3" - 12"
26	3" - 24"
24	5" - 24"
5' Length	Size
W.A	4" - 12"
26	5" - 14"
10' Length	Size
W.A	5" - 8"



- No seaming required – "Hidden Lock" feature. Seal-Tite fit.
- Eliminates sheet metal screws and taping.
- Tapered end with fine crimp and 2" bearing space assures easy, secure fit with another section of pipe, elbow, or take-off in boot.
- One man installation saves time and money.

HAND CRAFTED "BALL-BEARING" ELBOWS & ANGLES



Adjustable Elbow
Four-Piece, 90°

Gauge	Size
W.A	3" - 12"
26	3" - 18"
24	5" - 36"



Adjustable Angle
Two-Piece, 45°

Gauge	Size
W.A	4" - 12"
26	3" - 18"
24	5" - 24"

Elbows & Angles

Minimum turbulence and friction because air flows over (instead of against) edges of interior ridges. Our hand crafted "Ball Bearing" gores are easy to adjust, leak-tite, and guaranteed not to fall apart.

***They adjust and will not fall apart or replacement is guaranteed by Seal-Tite.**

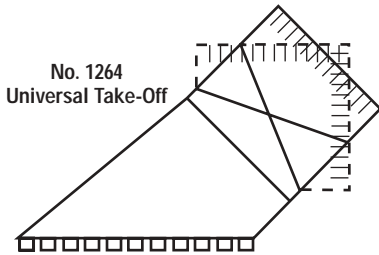
See page 20 for Aluminum Pipe and Elbows and Black Stove Pipe

Seal-Tite®

TAKE-OFF FITTINGS

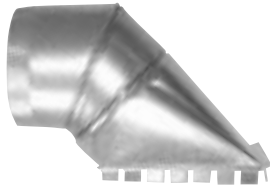
#1264

High Performance Universal Take-Off



No. 1264 Universal Take-Off

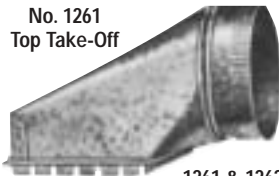
No. 1264 Take-Off Adjusted for Top Installation



No. V1264 Universal Take-Off



No. 1264 Take-Off Adjusted for Side Installation



No. 1261 Top Take-Off

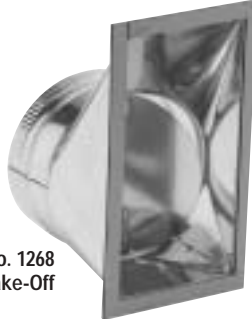


No. 1262 Top Take-Off

1261 & 1262 available in No-Rise on 6".

No. 1268 26 GA, Commercial High-Efficiency Take-Off

5" - 20"
Available with Installed Damper and Stick-On Gasket

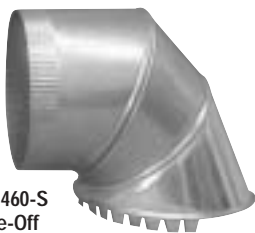


No. 1268 Take-Off

Round Take-Offs



No. 1260-S Take-Off Adjustable Cone



No. 1460-S Take-Off 1/2 Tab Cone



No. 1160-S Take-Off Cone Includes Damper

Seal-Tite 1264 Universal Take-Off provides proper air requirements to the branch.

1. Full 90° adjustment with ease.
2. Designed for most efficient air flow, up to 3 times more efficient.
3. Full 3/8" collar around connection to duct, for your assurance of a Seal-Tite fit. Solid corner construction.
4. Notched 5/8" dovetail for faster and easier installation, yet sturdy construction.
6. Seal-Tite No. 1264 take-off saves time, energy and maximizes comfort.

Round Pipe Size	Installed Height from Duct	Take-Off Size	AVAILABILITY			
			1261	1262	1264	V1264
4"	2"	4 1/2" x 6"	✓		✓	
4"		6" x 7"				✓
5"	2"	4 1/2" x 9"	✓	✓	✓	
5"		6" x 7"				✓
6"	1 7/8"	6" x 10"	✓	✓	✓	
6"	1 7/8"	6" x 8"			✓	
6"	1 7/8"	6 1/2" x 6 1/2"			✓	
6"	No Rise	6" x 10"	✓	✓		
6"		6" x 7"				✓
7"	7/8"	6" x 12"	✓	✓	✓	
7"		7" x 8"				✓
8"	5/8"	6" x 14"	✓	✓	✓	
8"		8" x 9"				✓
9"	5/8"	6" x 16"			✓	
10"	5/8"	7" x 16"			✓	
12"	5/8"	7" x 20"			✓	

Round Pipe Size	1265	
	Take-Off Size	
4"	5" x 5"	
5"	5" x 5"	
6"	6" x 6"	
7"	7" x 7"	
8"	7" x 8"	
9"	7" x 10"	
10"	10" x 10"	
12"	12" x 12"	



No. 1265 Take-Off Collar

Size	AVAILABILITY			
	1260-S	1460-S	1160-S	1266
5" - 4"	✓	✓		✓
6" - 5"	✓	✓		✓
7" - 6"	✓	✓	✓	✓
8" - 7"	✓	✓		✓
9" - 8"	✓	✓		✓

No. 1266 Take-Off New Style Cone



Seal-Tite®

REGISTER BOOTS

Handcrafted Premium Boots



No. 1274
90° Angle Register Boot
3 7/8" Extension



No. 1270
Straight Register Boot



No. 1270
Straight Boot
Center Tapered
9 1/4" Deep



No. 1279
Basement Register Boot



No. 1273-L
Left End Register Boot



No. 1273
Center End Register Boot



No. 1273-R
Right End Register Boot

Register Size	Collar Size	AVAILABILITY		
		1274, 1374, 1370, 1373, 1270 & 1273	1279	1474
2 1/4" x 10"	4", 5" & 6"	✓		
4" x 10"	4", 5" & 6"	✓	✓	
4" x 12"	4", 5" & 6"	✓	✓	
4" x 14"	5" & 6"	✓		
2 1/4" x 12"	5" & 6"	✓		
2 1/4" x 14"	5" & 6"	✓		
4" x 12"	7" & 8"	✓		
4" x 14"	7" & 8"	✓		
2 1/4" x 12"	7" & 8"	✓		
2 1/4" x 14"	7" & 8"	✓		
6" x 10"	6"	✓	✓	
6" x 12"	6", 7" & 8"	✓	✓	
6" x 14"	8"	✓	✓	
4" x 10"	7"	✓		✓
4" x 12"	7"			✓
6" x 14"	8"	✓		

New construction Register Boots



No. 1474
Register Boot
4" Extension for Fire Dampers



No. 1374
Register Boot
2" Extension



No. 1370
Register Boot



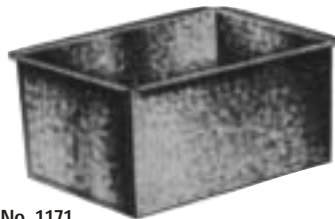
No. 1373-C
Register Boot

REGISTER PANS

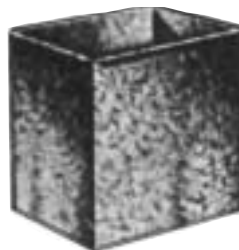


No. 1170
Register Boot
10" Deep

Register Size	Collar Size
8" x 10"	8"
8" x 12"	8"
9" x 12"	9"
10" x 12"	10"
10" x 14"	10"
12" x 14"	12"
14" x 16"	14"



No. 1171
Register Pan
6" Deep



1171 & 1172
Register Size

8" x 10"
8" x 12"
9" x 12"
10" x 12"
10" x 14"
12" x 14"
14" x 16"

No. 1172
Register Pan
10" Deep



No. 50
Duct Register Box

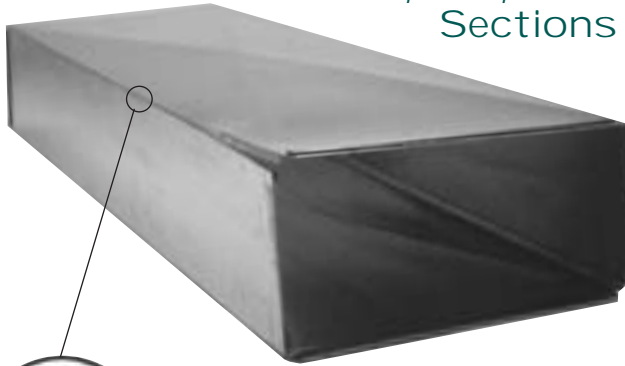
50
Register Size

4" x 10"
6" x 10"
4" x 12"
6" x 12"
4" x 14"
6" x 14"

SealTite®

RECTANGULAR DUCT

32", 48", 60" & 96"
Sections



Standard 26 gauge (Cross broke for rigidity and no oil can) Available in 2 styles:

- S/D = Slide & Drive (Sliding Edge w/Drive Cleat)
- B/L = Button-Lock (Snap-Lock)

Sections sold complete w/"S" Hook and Drive Cleat.



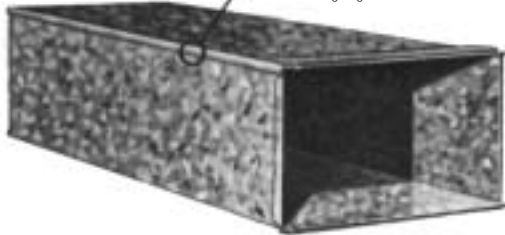
B/L – Button-Lock

With Button-Lock Seams,
"S" Hook & Drive Cleat
Connection All Included
32", 48", 60" & 96" Sections



S/O – Sliding Edge

With Slide & Drive Seams,
"S" Hook & Drive
Cleat Connection All Included
32", 48", 60"
& 96" Sections

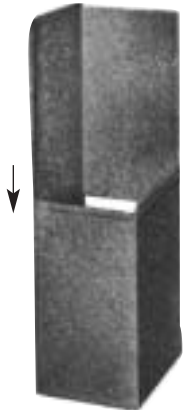


32", 48", 60" & 96"
Size

8" x 8"
10" x 8"
12" x 8"
14" x 8"
16" x 8"
1"8 x 8"
20" x 8"
22" x 8"
24" x 8"
26" x 8"
28" x 8"
30" x 8"
32" x 8"
34" x 8"
36" x 8"

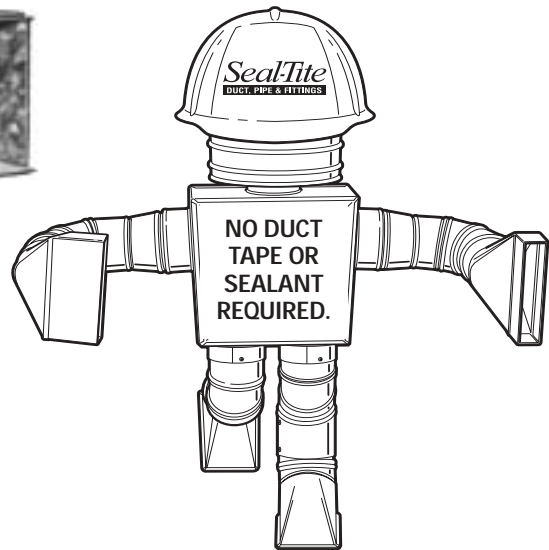
(Specify Type Connection)
Sold two pieces per section.
Sold in carton, skid and rack quantities.
Available in 24 & 22 gauge.
Available in Insulated and in Special Sizes &
Gauges – See Price List.

10" & 12"
Depth Duct
As Well As
Other Sizes
& Gauges



Slide
& Drive

Quickly and simply assembled on
the job by inserting the seams on
opposite edges and easily sliding
the two pieces together and
assemble with drive cleat.



JOIST PANNING



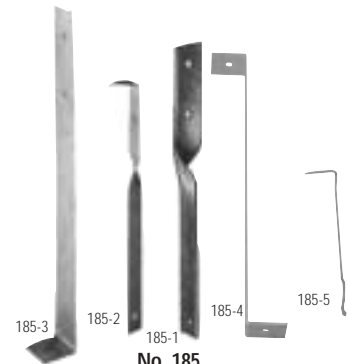
No. 207-17
Joist Planning

207-17
35 ³ / ₈ x 16 ¹ / ₂
Single Joist on 16" Centers
207-19
35 ³ / ₈ x 19
207-24
35 ³ / ₈ x 24
208-33
35 ³ / ₈ x 33
Double Joist

Packed in cartons for convenient handling.
Available in 26 and 30 gauge.

For other sizes contact factory.

No. 182
Volume Damper



No. 185
Duct Hanger
Packed per carton

SealTite®

RECTANGULAR DUCT FITTINGS

Double Lapped
Hand Hammered
Seam Construction



No. 1240
Elbow - Short Way



No. 1241
Angle - Short Way



No. 1245
Angle - Long Way



No. 1246
Elbow - Long Way

Duct Elbows & Angles

with 4" radius throats

Note:
Also available in 10" & 12" Depths

1240, 1241,
1245, & 1246
Size

8" x 8"
10" x 8"
12" x 8"
14" x 8"
16" x 8"
18" x 8"
20" x 8"
22" x 8"
24" x 8"
26" x 8"
28" x 8"
30" x 8"
32" x 8"
34" x 8"
36" x 8"

Available in Insulated and in
Special Sizes & Gauges -
See Price List.

Duct Reducers

4" Reduction
2" Reduction available in V1251

1251 & V1251
Size

12" x 8" to 8" x 8"
16" x 8" to 12" x 8"
18" x 8" to 14" x 8"
20" x 8" to 16" x 8"
24" x 8" to 20" x 8"



No. 1251
Reducer - 16" Long
(Tapered One Side)

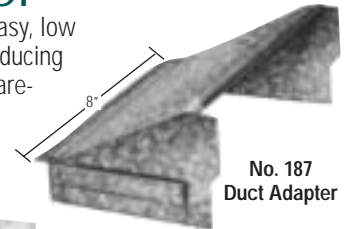


No. V1251
Reducer - 8" long

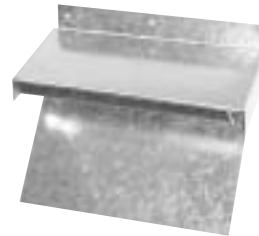
Duct Adapter

Provides a fast, easy, low
cost method of reducing
duct. Saves on ware-
house space.

Available in Insulated and
in Special Sizes & Gauges -
See Price List.



No. 187
Duct Adapter



No. V187
Duct Adapter

187 & V187
Size

2" x 8"
4" x 8"
6" x 8"
8" x 8"
10" x 8"

Available in Insulated and in Special Sizes & Gauges - See Price List.
S Connectors and Drive Cleats supplied with each Duct Fitting.

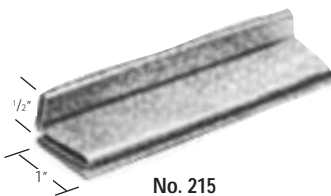
INSULATED DUCT & FITTINGS



Internal Insulation

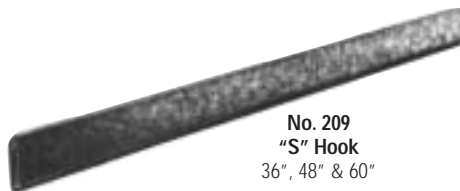
Seal-Tite duct fittings and take-offs are
available with 1/2" internal insulation for quiet,
thermally efficient heating and cooling air
distribution systems.

Non-combustible insulation is protected by
Super-Fine Ultralite finish and is U.L. listed.
Density 2 lbs./cu. ft. K factor .24. Sizes and
prices available through factory.



No. 215
Rigid "S" Strip
1" x 1/2"

Designed and recommended for
use on duct wider than 22".



No. 209
"S" Hook
36", 48" & 60"



No. 213
Drive Cleat

Drive cleats are furnished in standard
lengths of 6", 8", 10", 12", 36" & 60".

SealTite®

RECTANGULAR DUCT FITTINGS

Used when duct is wider than plenum.



No. 1203L
Transition Take-Off
2" Rise



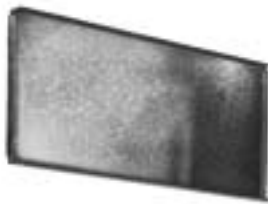
No. 1203
Transition Take-Off
2" Rise



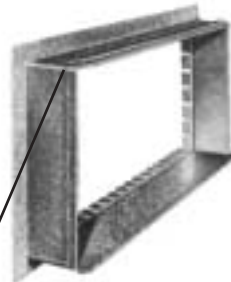
No. 1203R
Transition Take-Off
2" Rise

1203L, 1203 & 1203R	
Plenum Opening Width-Depth	Duct Size Width-Depth
10" x 10"	12" x 8"
10" x 12"	14" x 8"
10" x 13"	16" x 8"
10" x 14"	18" x 8"
10" x 16"	20" x 8"
10" x 17"	22" x 8"
10" x 18"	24" x 8"
14" x 15"	26" x 8"
14" x 16"	28" x 8"
14" x 18"	30" x 8"

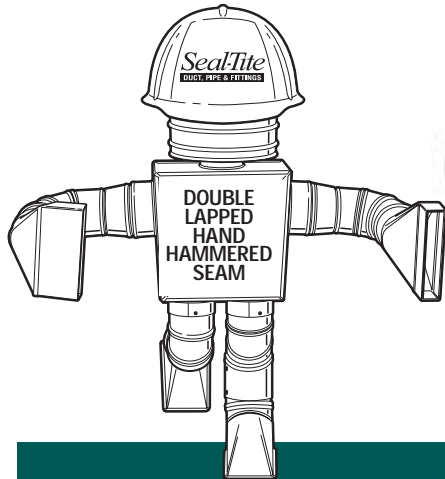
Additional sizes available on request. Carton quantity not applicable. Available in Insulated and in Special Sizes & Gauges (No. 1203L/R are non-stock items. See Price List.



No. 1210
Duct Head
(End Cap)



No. 1200
Duct Take-Off
Collar
3" Long



No. 1202
Offset Take-Off
Collar
7" Long - 2" Rise

Note: Also available in 10" & 12" Depths

Seal-Tite 1202 & 1203 Take-Off Collars are designed to give maximum air delivery.

1. Approximately 3 1/2 times more efficient than straight tap in or straight collar.
2. Two inch rise permitting space between top of plenum and floor joist above.
3. Notched dovetail cuts installation time by approximately one-third.
4. Full corners and double lapped hand-hammered seam construction minimize noise, eliminate leakage and provide excellent rigidity and durability.
5. Seal-Tite take-off completely covers tap-in hole.

1200, 1202 & 1210 Size

8" x 8"
10" x 8"
12" x 8"
14" x 8"
16" x 8"
18" x 8"
20" x 8"
22" x 8"
24" x 8"
26" x 8"
28" x 8"
30" x 8"
32" x 8"
34" x 8"
36" x 8"

Available in Insulated and in Special Sizes & Gauges - See Price List.

AIR FILTER FRAMES



No. 250 (above)
Without Dovetail
(Economy)

251-254 Size
14" x 20"
14" x 25"
16" x 20"
16" x 25"
20" x 25"
20" x 20"
20" x 25"

No. 251
Dove tail
One Side

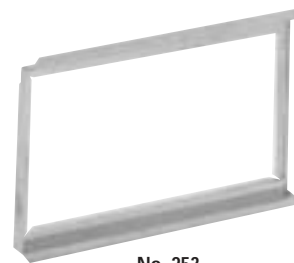
No. 252
Dovetail
Both Sides



No. 254
Premium Filter Frame
w/Hinged Door



No. 249
Filter Frame
(Premium
Slide-In)



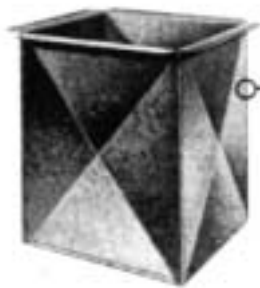
No. 253
Screw-In Style Filter Frame
(Screws into Side of Plenum)

249 Size
16 1/8" x 20 1/8"
20 1/8" x 20 1/8"
16 1/8" x 25 1/8"
20 1/8" x 25 1/8"
14 1/8" x 20 1/8"
14 1/8" x 25 1/8"

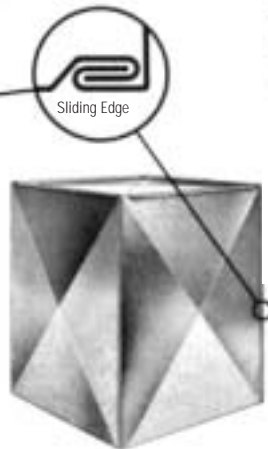
Seal-Tite

PLENUM CHAMBERS

Individualy
Cartoned,
Shipped K.D.

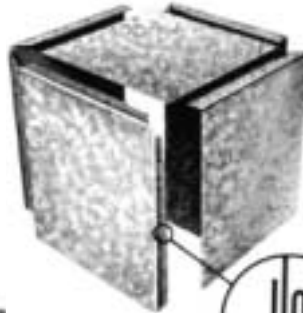


**No. 80
Down-Flow Plenum**
Sliding edge seam with
flanged construction.

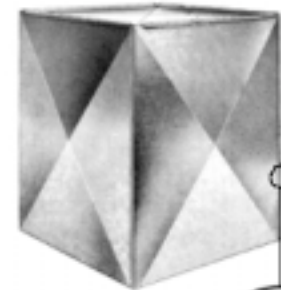


No. 81 Plenum
Made to fit flange dimensions on
unit with "S" hooks inside. Sliding
edge seam construction.

No. 82 Plenum
"ADJUSTABLE",
can be trimmed down
to fit flange on unit.



Adjustable
Male Edge

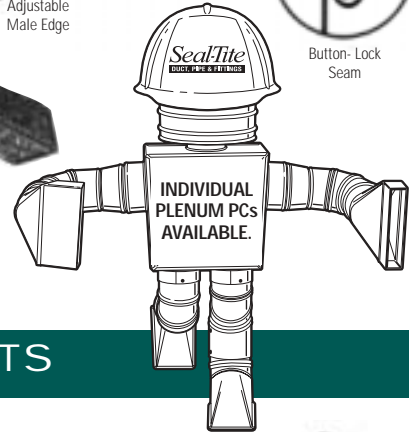


No. 94 Plenum
Button-Lock Seam
and Set-In Cap



Button-Lock
Seam

**No. 212
Plenum Corners**
Priced per 60" lengths



SealTite
DUCTWORK & FITTINGS

INDIVIDUAL
PLENUM PCs
AVAILABLE.

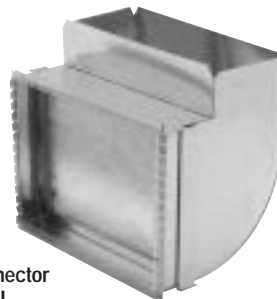
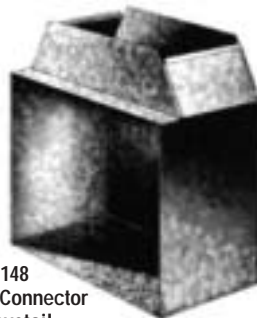
RETURN AIR PRODUCTS

No. 148 & 248 Return Air Drop Connectors

Casing Opening	Duct Size
18" x 18"	12" x 8" to 16" x 8"
18" x 18"	14" x 8" to 18" x 8"
18½" x 18½"	14" x 8" to 18" x 8"
18" x 19"	14" x 8" to 18" x 8"
18" x 20"	14" x 8" to 22" x 8"
20" x 12"	14" x 8" to 18" x 8"
20" x 12"	16" x 8" to 20" x 8"
*20" x 14"	20" x 8" to 24" x 8"
23" x 14"	16" x 8" to 22" x 8"
24" x 14"	24" x 8" to 28" x 8"
26" x 14"	18" x 8" to 24" x 8"
26" x 16"	18" x 8" to 24" x 8"
28" x 16"	20" x 8" to 26" x 8"
30" x 18"	24" x 8" to 30" x 8"

Top filter opening standard.
*Add "S" for side filter access.
*Add "F" for filter included.

**No. 148
Return Air Connector
w/o Dovetail**



**No. 248F
Return Air Connector
w/Dovetail**
(shown as 248SF
20" x 14" to 20" x 8")

No. 81100 Return Air Package

Complete package consisting of:
1 – 1200 Starting Collar
2 – 32" Duct Sections B/L
1 – 248 Connector with Filter
6 – 213 Drive Straps
Shipped K.D.

Duct Size	Collar (Filter Size)
*20" x 10"	20" x 14"
*20" x 10"	20" x 16"
*25" x 10"	23" x 14"
*25" x 10"	25" x 14"
*25" x 10"	25" x 16"

Top filter opening standard.
*Add "S" for side filter access.
*Add "F" for filter included.



**No. 81100
Return Air
Package**

No. 92 Low Profile Furnace Return Support Box

Return Air Boxes manufactured from 22 and 24 ga. galvanized steel.
Bottom panel constructed from 24 ga. material. Sides from 22 ga.
material. Set in tops and bottoms ordered ¼" larger than bottom of unit.
Shipped K.D.

**No. 92
Low Profile
Furnace
Return Air
Support
Box**



Available in a variety of sizes.

SealTite®

WALL STACK

Snap-Lock Wall Stack

One Piece 12" & 24" Sections Available only in Snap-Lock. Other sizes available as factory specials.



12" Section

24" Section

60" & 100" 2-Piece Wall Stack

Available in Button-Lock and Sliding Edge. Quickly and simply assembled on the job by using Button-Lock assembly or Sliding Edge. (No drive cleat required.)

6"-100" Dimensions

- 2 1/4" x 10"
- 2 1/4" x 12"
- 2 1/4" x 14"
- 3 1/4" x 10"
- 3 1/4" x 12"
- 3 1/4" x 14"



Button-Lock

STACK ANGLES & ELBOWS



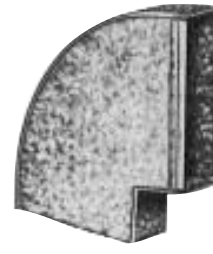
No. 1240-S Elbow



No. 1241-S Angle



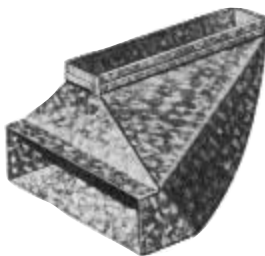
No. 1245-S Angle



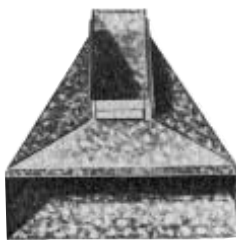
No. 1246-S Elbow

Stack Angle Dimensions

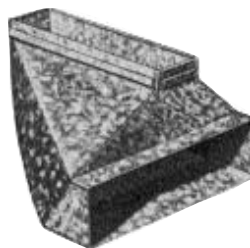
- 2 1/4" x 10"
- 2 1/4" x 12"
- 2 1/4" x 14"
- 3 1/4" x 10"
- 3 1/4" x 12"
- 3 1/4" x 14"



No. 1259 Left Reverse Elbow (5 3/4)"



No. 1253 Center Reverse Elbow (5 3/4)"



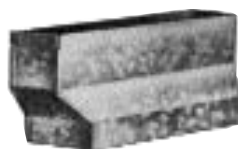
No. 1258 Right Reverse Elbow (5 3/4)"

Dimensions	AVAILABILITY		
	1210 & 1200	1250	1259, 1253 & 1258
2 1/4" x 10"	✓	✓	✓
2 1/4" x 12"	✓		
2 1/4" x 14"	✓		
3 1/4" x 10"	✓	✓	✓
3 1/4" x 12"	✓	✓	✓
3 1/4" x 14"	✓		✓

PLEASE SPECIFY PART NUMBER WHEN ORDERING.
*Overall Depth - Deduct 1" for Installed Depth.



No. 1200 Wall Stack Take-Off Collar



No. 1250 Stack Adapter
3 1/4" x 10" to 2 1/4" x 12"
3 1/4" x 12" to 2 1/4" x 14"



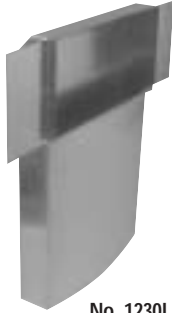
No. 1210 Wall Stack Cap

SealTite

STACK HEADS



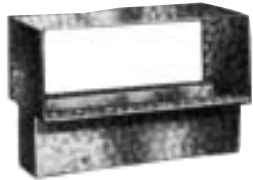
**No. 1230
Stack Head**
3" Throat, 2" Flange



**No. 1230LE
Stack Head with Plate**

AVAILABILITY

Stack Dimension	Register Size	AVAILABILITY	
		1230	1230LE
2 1/4" x 10"	6" x 10"	✓	✓
2 1/4" x 12"	6" x 12"	✓	✓
2 1/4" x 14"	6" x 14"	✓	✓
3 1/4" x 10"	4" x 10"	✓	✓
3 1/4" x 10"	6" x 10"	✓	✓
3 1/4" x 12"	4" x 12"	✓	✓
3 1/4" x 12"	6" x 12"	✓	✓
3 1/4" x 14"	4" x 14"	✓	✓
3 1/4" x 14"	6" x 14"	✓	✓

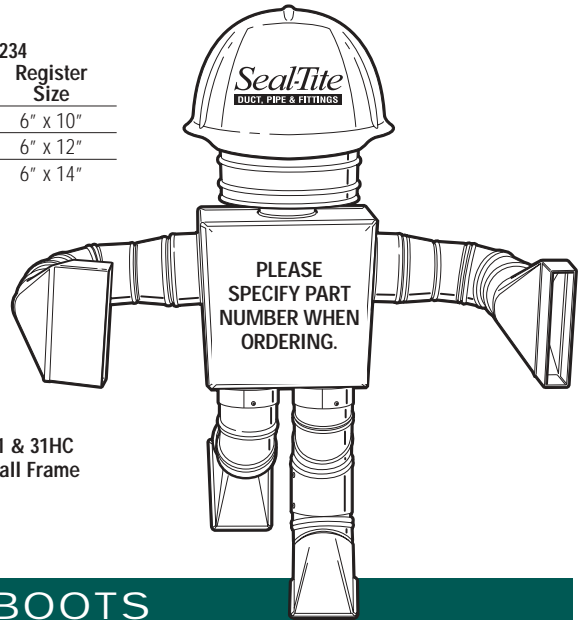


**No. 1232
Double Stack Head**
3" Throat



**No. 1234
Stack Head**
7 1/4" Deep

1232 & 1234	
Stack Dimension	Register Size
3 1/4" x 10"	6" x 10"
3 1/4" x 12"	6" x 12"
3 1/4" x 14"	6" x 14"



31 & 31HC Size

6" x 8"
6" x 10"
6" x 12"
6" x 14"
6" x 24"
6" x 30"



**No. 31 & 31HC
Dry Wall Frame**

WALL STACK BOOTS



**No. 1214
Universal Boot**



**No. 1218
Elbow Boot**
90°



**No. 1219-L
Left End Boot**



**No. 1219
Center End Boot**



**No. 1219-R
Right End Boot**

Stack Dimension	1214, 1218 & 1219	
	Collar Size	
2 1/4" x 10"	5" & 6"	
2 1/4" x 12"	5" & 6"	
2 1/4" x 14"	6"	
3 1/4" x 8"	5" & 6"	
3 1/4" x 10"	4", 5" & 6"	
3 1/4" x 10"	7"	
3 1/4" x 10"	8"	
3 1/4" x 12"	6"	
3 1/4" x 12"	7" & 8"	
3 1/4" x 14"	6" & 7"	
3 1/4" x 14"	8"	

Seal-Tite®

OVAL PIPE & FITTINGS



No. 4245
Round-to-Oval
Angle Boot

No. 4245NC
No Crimp

4245
Size
6" - 6"
7" - 7"



No. 4100 + 4113
Oval Pipe
100" Length + 113"
6" & 7"

No. 4060
Oval Pipe
60" Length
6" & 7"

For other sizes contact factory.

Also Available in Rack Quantities

ADAPTERS... EXCLUSIVELY FROM SEAL-TITE



No. 4212
Oval Boot Adapter
6" & 7" Oval

4212
Dimensions
2 1/4" x 10"
2 1/4" x 12"
2 1/4" x 14"
3 1/4" x 8"
3 1/4" x 10"
3 1/4" x 12"
3 1/4" x 14"



No. 1218
Elbow Boot
with No. 4212 Adapter

Converts Wall
Stack Boots
to Oval



No. 4213
Straight
Round-to-Oval Adapter

4213
Size
7" - 7"
6" - 6"
7" - 6"



No. 1264
Universal Branch Take-Off
with No. 4213 Adapter

Seal-Tite

OVAL FITTINGS

Oval Top & Side Take-Offs



No. 4261
Oval Top
Take-Off

4261 Size
6" x 10" - 6"
6" x 12" - 7"



No. 4265
Oval Side
Take-Off

4265 Size
6" x 6" - 6"
7" x 7" - 7"

Oval Stackheads & Register Boxes

6" & 7" Oval



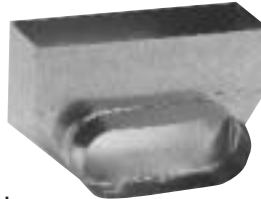
No. 4238
Oval Stackhead
2 1/4" Depth
3 1/4" Depth

4238 Dimensions
4" x 10"
4" x 12"
6" x 10"
6" x 12"



No. 4270
Angle Oval
Register Box

4270 Dimensions
2 1/4" x 12"
4" x 10"



No. 4271
Oval Register Box

4271 Dimensions
2 1/4" x 12"
4" x 10"
4" x 12"

Available with 9" long collar

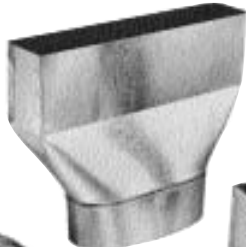
Oval Register Boots

6" & 7" Oval



No. 4272
End Oval
Register Boot

No. 4272
Straight Oval
Register Boot



No. 4274
Oval 90° Register Boot



4272, 4273 & 4274 Dimensions
2 1/4" x 10"
2 1/4" x 12"
2 1/4" x 14"
4" x 10"
4" x 12"

Oval Boots

6" & 7" Oval



No. 4244
Round-to-Oval Boot

No. 4244NC
Round-to-Oval Boot
w/No Crimp

No. 4246
Oval Reverse
Boot



No. 4246NC
No Crimp



No. 4247
Round-to-Oval
End Boot

No. 4247NC
No Crimp

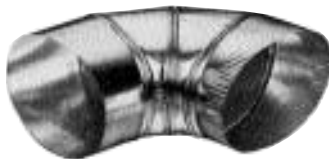
No. 4248
Offset
Round-to-Oval
Adapter



No. 4248NC
No Crimp

Oval Elbows/Angles

6" & 7"



No. 4130
Horizontal Oval Elbow



No. 4131
Horizontal Oval Angle



No. 4140
Vertical Oval Elbow



No. 4141
Vertical Oval Angle

SealTite®

DUCT BOARD FITTINGS

Take-Offs & Collars

No. 1660-S
Duct Board Cone
w/ 4 1/2" SE Segment &
Tabs

1660-S, 1560-S
& 1760-S
Size

5" - 4"
6" - 5"
7" - 6"
8" - 7"
9" - 8"



Flex Retention
Tabs

No. 1760-S
Duct Board Cone
w/ 4 1/2" SE Segment,
Damper & Tabs



No. 1560-S
Duct Board
Cone



No. 696
90° Duct Board
Boot w/Straight
Collar

Take-Off Opening	Collar Size
6" x 7"	4"
6" x 7"	5"
6" x 7"	6"
6" x 7"	7"
6" x 7"	8"
6" x 8"	4"
6" x 8"	5"
6" x 8"	6"
6" x 8"	7"
6" x 8"	8"

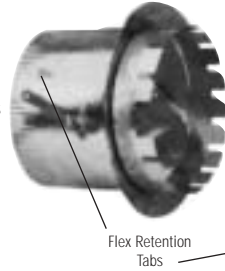


No. 697
45° Duct Board
Boot w/Adjustable
Collar

1727, 1728
& 1729
Size

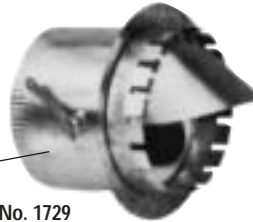
4"
5"
6"
7"
8"
9"
10"
12"
14"
16"

No. 1728
Duct Board
Collar w/
Damper & Tabs



No. 1727
Duct Board
Collar

Flex Retention
Tabs



No. 1729
Duct Board Collar w/
Damper, Tabs & Scoop



No. 800
Flex Duct
Conductor
4" - 16"

TWIST TYPE TAKE-OFF CONNECTORS FOR DUCT BOARD

Seal-Tite Recommended
Fitting for Efficient Air
Delivery

No. 1564
Duct Board
Seal-Tite® Take-Off



1564
Size

4 1/2" x 9" - 5"
6" x 10" - 6"
6" x 12" - 7"
6" x 14" - 8"

502, 503, 505,
506 & 508
Size

5"
6"
7"
8"
9"
10"
12"
14"
16"



No. 502-WB-C2



No. 503-WB-C3



No. 505-WB-EL



No. 506-WB-D



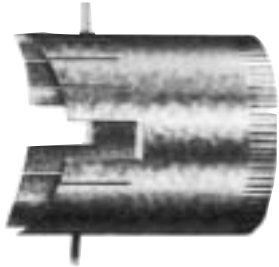
No. 508-WB-DEL

Seal-Tite®

TWIST TYPE TAKE-OFF CONNECTORS FOR SHEET METAL

176, 605, 604,
606, 607, 608,
601, 602, 603,
301, 302, 303,
304, 305, 306,
315, 325 & 335

Size
4"
5"
6"
7"
8"
9"
10"
12"
14"
16"
18"
20"



No. 176
Take-Off Collars
For Insulated Rigid Round Pipe.
(Specify Round Run Dimension.)



No. 605-WG-EL



No. 604-WG-E



No. 606-WG-D



No. 607-WG-DE



No. 608-WG-DEL



No. 601-WG-C1



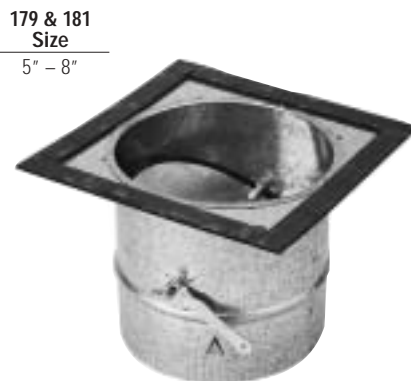
No. 602-WG-C2



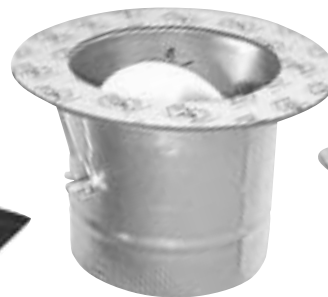
No. 603-WG-C3



No. 179
Stick-On Take-Off Collar
w/Tabs



No. 181
Stick-On Take-Off Collar
w/Tabs & Damper



No. 302
Stick-On w/Damper

No. 301
Stick-On Take Off

No. 303
Stick-On w/Scoop

No. 304
Stick-On w/Scoop &
Damper

No. 306
Stick-On Elbow



No. 305
Stick-On Saddle

No. 315
Stick-On Saddle w/Damper

No. 325
Stick-On Saddle w/Scoop

No. 335
Stick-On Saddle w/Scoop & Damper

SealTite®

ROUND PIPE ACCESSORIES

Reducers/Increases



No. 131
Taper Increaser

Specify
No. 133
for
No Crimp

26 GA.
8" Long



No. 132
Taper Reducer

4-3 and 5-4 6 1/2" Long.



No. 231
Short Increaser

Specify No. 233
for No Crimp

26 GA.



No. 232
Short Reducer

131, 132, 231 & 232
Size

4" - 3"
5" - 4"
5" - 3"
6" - 5"
6" - 4"
6" - 3"
7" - 6"
7" - 5"
7" - 4"
8" - 7"
8" - 6"
9" - 8"
9" - 7"
9" - 6"
10" - 9"
10" - 8"
10" - 7"
10" - 6"
12" - 10"
12" - 8"
12" - 7"
14" - 12"
16" - 12"
16" - 14"

Connectors Draw Bands

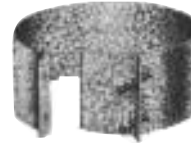


No. 162
Snap Type Pipe
Connector
4" - 8"

No. 167
Draw Band
Bolt Type
26 GA.
4" - 16"



No. 162 HC
Hose Clamp
Connector
4" - 8"



Collars



No. 171
Stub Collar
(No Crimp)



No. 172
Top Collar
(Crimp)

271/272 Collars with 1/8" lip



No. 1716
6" Long Top
Collar



No. 151
Boot Cap w/Crimp
(shown)

No. 152
Boot Cap/
No Crimp

171, 172, 151, 152,
180-1, 180, 173
& 175
Size

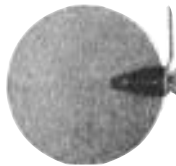
3" - 24"

No. 1724
4" Long Top
Collar with
Crimp & Bead

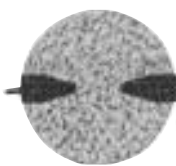


1716, 1724,
1726 & 1732
Size

3" - 18"



No. 180-1
Single Quad
Damper Complete
w/Bearings



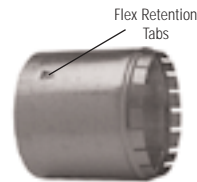
No. 180
Double Quad
Damper



No. 173
Damper Collar

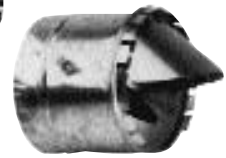


No. 175
Damper Section
7" Long



No. 1726
6" Long Top
Collar w/Tabs, Crimp & Bead

Flex Retention
Tabs



No. 1732
Damper Collar
w/Scoop



No. 220
Flue Thimble
4" - 12"



No. 2223
Fresh Air Intake
(screened)
4" - 8"



No. 154
Shanty Cap
3" - 16"



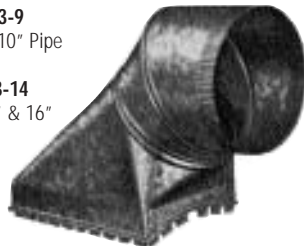
No. 184
Vent Cap w/
Wind Band
3" - 12"

1463-9 & 1463-14
Size

4 1/2" x 9" - 5"
6" x 10" - 6"
6" x 12" - 7"
6" x 14" - 8"
6" x 16" - 9"
7" x 16" - 10"

No. 1463-9
Fits 8", 9" & 10" Pipe

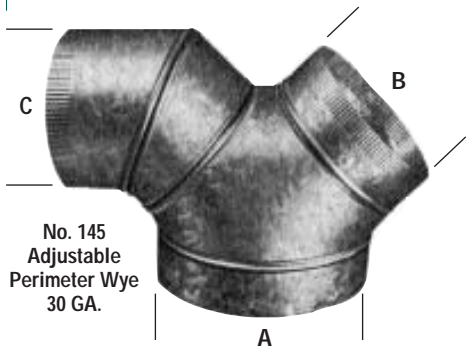
No. 1463-14
Fits 12", 14" & 16"
Pipe



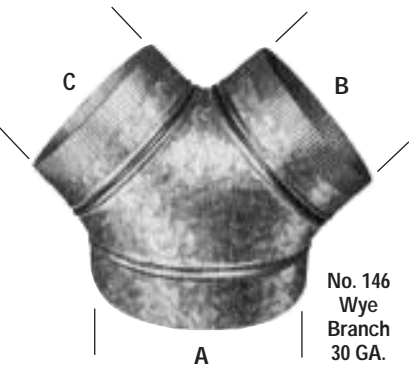
No. 222
Storm Collar
3" - 12"

SealTite

ROUND PIPE ACCESSORIES



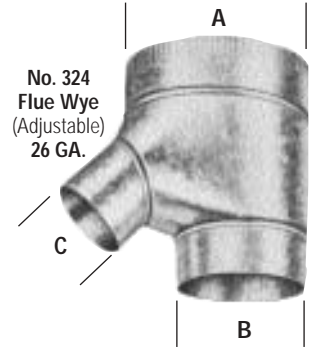
**No. 145
Adjustable
Perimeter Wye
30 GA.**



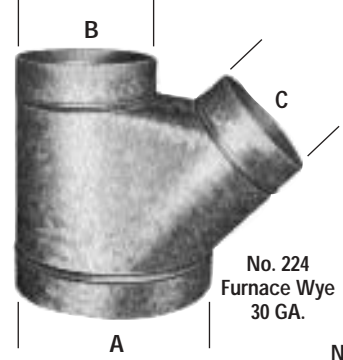
**No. 146
Wye
Branch
30 GA.**

**145 & 146
Sizes for
A x B x C**

6" x 5" x 5"
7" x 5" x 5"
7" x 6" x 5"
7" x 7" x 5"
8" x 6" x 6"
8" x 7" x 5"
9" x 7" x 7"
9" x 8" x 6"
10" x 7" x 7"
10" x 7" x 6"
10" x 8" x 8"
12" x 10" x 10"



**No. 324
Flue Wye
(Adjustable)
26 GA.**

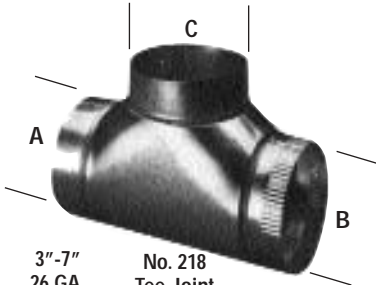


**No. 224
Furnace Wye
30 GA.**

**324
Sizes for
A x B x C**

5" x 4" x 3"
5" x 5" x 3"
6" x 4" x 3"
6" x 5" x 3"
6" x 6" x 3"
7" x 5" x 3"
7" x 6" x 3"
6" x 4" x 4"
6" x 5" x 4"
6" x 6" x 6"
7" x 6" x 4"

Non AGA Approved Draft Diverters



**3"-7"
26 GA. No. 218
Tee Joint
(Crimp)**

**8"+ up
24 GA. No. 219
(No Crimp)**

**No. 217
(Crimp on the run)**

**217, 218 & 219
Sizes for
A x B x C**

3" x 3" x 3"
4" x 4" x 4"
5" x 5" x 5"
6" x 6" x 6"
7" x 7" x 7"
8" x 8" x 8"
9" x 9" x 9"
10" x 10" x 10"
12" x 12" x 12"
14" x 14" x 14"

**224
Sizes for
A x B x C**

A x B x C	Length
8" x 6" x 6"	11"
9" x 7" x 7"	13"
10" x 8" x 8"	14"
12" x 10" x 7"	13"
12" x 10" x 8"	14"
12" x 10" x 10"	16"
12" x 12" x 8"	14"
14" x 9" x 9"	15"
14" x 10" x 10"	16"
14" x 12" x 8"	14"
14" x 12" x 12"	18"
16" x 12" x 8"	14"
16" x 12" x 9"	15"
16" x 12" x 10"	16"
16" x 12" x 12"	16"



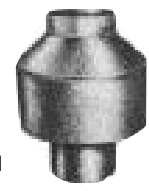
**No. 153
Tee Joint Cap
3" - 12"**



**No. 123-H-V
Horizontal-Vertical**



**No. 121
Horizontal**

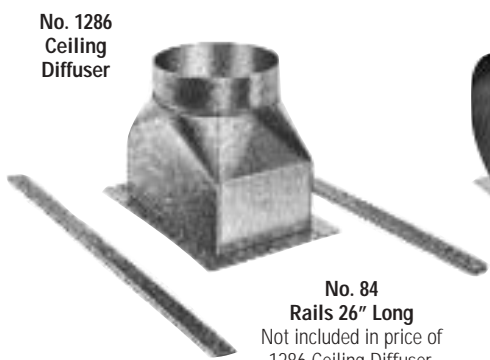


**No. 120
Vertical**

**120, 121 & 123
Size
3" - 8"**

1286

Register Size	Pipe Size
4" x 8"	5"
4" x 8"	6"
4" x 10"	5"
4" x 10"	6"
6" x 6"	6"
6" x 10"	6"
6" x 12"	6"
6" x 12"	7"
6" x 14"	8"
8" x 8"	8"
8" x 10"	8"
8" x 12"	8"
12" x 12"	9"



**No. 1286
Ceiling
Diffuser**

**No. 84
Rails 26" Long
Not included in price of
1286 Ceiling Diffuser.**



**No. 2172
Ceiling Register
Box**

**No. 2172-B
Ceiling Register
Box**

**2171 & 2172-B
Size**

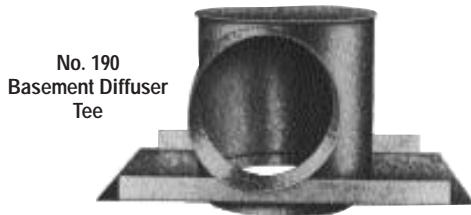
6" x 6" - 6"
8" x 8" - 6"
8" x 8" - 7"
8" x 8" - 8"
10" x 10" - 8"



ROUND PIPE ACCESSORIES



No. 1280
Ceiling Box
Less Damper
& Chain



No. 190
Basement Diffuser
Tee



No. 191
Diffuser Tee

Pipe Size	AVAILABILITY		
	1280	190	191
6" – 6"	✓	✓	✓
6" – 8"	✓	✓	✓
7" – 8"	✓	✓	✓
8" – 8"	✓	✓	✓
7" – 10"		✓	✓
8" – 10"	✓	✓	✓
8" – 12"			✓

⁵/₈" Plaster Ground supplied on Ceiling Diffusers.
Can be supplied with ⁷/₈" if specified.

G500 SERIES SEAL-FLEX SLEEVE & ACCESSORIES

Seal-Tite Seal-Flex Sleeve insulates galvanized pipe and provides more air delivery than "flex" pipe.
(8" – Galvanized vs. Flex, approximately 35% more efficient)
Available in 4" – 18" sizes.

Description/Applications

Seal-Flex Sleeve G500 is a U.L. listed insulation for round metal pipe. The scuff resistant grey polyethylene jacket provides an exterior vapor barrier and the 1" fiberglass insulation combines to provide fast economical jobsite installation. Just slip seal-flex sleeve over the galvanized pipe.

G500 has a composite U.L. fire hazard classification of less than 25 flame spread and 50 smoke developed, and has a Pipe and Equipment Covering listing.

Performance Features/Benefits

- U.L. Listed Pipe and Equipment Covering. Less than 25 flame spread, 50 smoke developed.
- Standard 1" thick fiberglass insulation.
"K" .28 BTU/hr./sf. at 75° mean
"R" 3.75
- Extra thickness of fiberglass insulation available on request.
"C" .187 BTU/hr./sf. at 75° mean
"R" 5.357
- Scuff resistant grey polyethylene vapor barrier. Jacket Water Vapor Transmission Rating .10 perms.
- Full range of sheet metal diameters available. (4" – 18" sizes)
- Eliminates need for handling and fabricating bulky duct wrap, for round pipe on jobsite.
- Easy diameter identification. Each piece is marked with size on closure tape.
- Packaged efficiently for easy warehousing, shipping and jobsite handling.
- Starter cone No. 274 makes sliding Seal-Flex sleeve over pipe a snap. Draw band clamp No. 700 assures sleeve stays in place.



Accessories



No. 700
Draw Band Type
Clamp



No. 274
Starter Cones
Permanent Galvanize Metal for durability and ease of assembly. Just fit on end of pipe & slide Seal-Flex over the top.

Seal-Tite

ALUMINUM PIPE & FITTINGS

Snap-Lock Pipe



Straight Pipe
3" & 4"



Adjustable Elbows
3" & 4"



Reducer
3" & 4"

BLACK PIPE & FITTINGS

Stove Pipe Elbows & Accessories



24" Black Pipe
5" - 8"



Black Elbow
5" - 8"

Taper Reducer

6" - 5"
7" - 6"
8" - 6"
8" - 7"



Boot Cap
5" - 8"

**No. 4248
Round-to-Oval
Adapter**

6" - 6"
7" - 6"
7" - 7"



Tee Joint

5" x 5" x 5"
6" x 6" x 6"
7" x 7" x 7"
8" x 8" x 8"

See No. 217, 218
& 219 for style.

Telescopic Pipe
5" - 8"

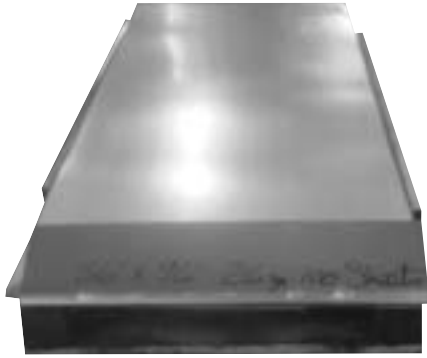


Trim Collar
5" - 8"

SealTite

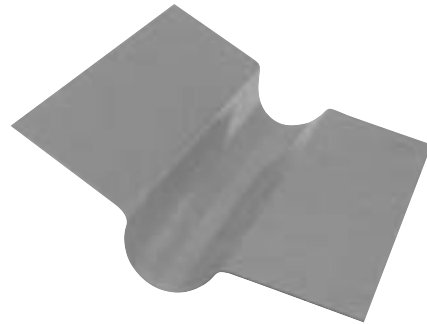
SKID SHEET STEEL

HEAT TRANSFER PLATES



36" X 96" 28 GA., 26 GA.
Packed 100 per skid

48" X 120" 28 GA., 26 GA.
Packed 50 per skid



For Installing Tubing to Sub Floor
For Radiant Floor Heating

No. 336
36" Long

No. 348
48" Long

36" or 48" Length
Install with Zip Screws
50 Pieces per Bundle

MOBILE & MODULAR HOME APPLICATIONS



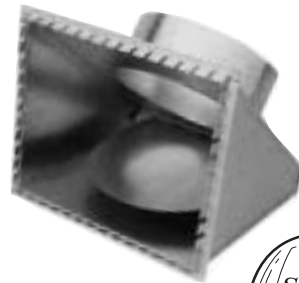
No. 146 – WYE

No. 146
WYE
Size

14" – 12" x 12"
12" – 10" x 10"
12" – 12" x 12"

All fittings available individually.
Call Customer Service for pricing.

No. 201
Duct Tap-In Fitting
w/Damper



No. 201
Duct Tap-In Fitting w/Damper

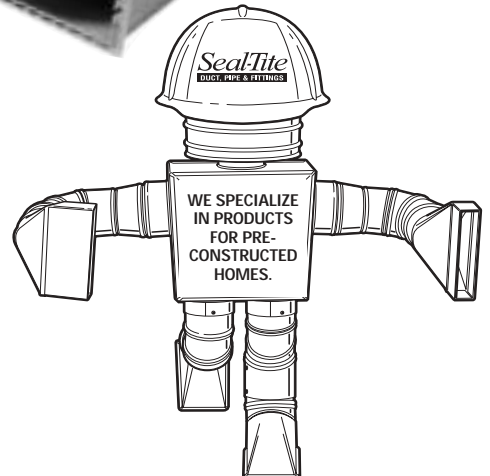
Opening Size	Depth Size	Collar Size
11" x 12"	14"	10"
14" x 12"	14"	10" & 12"
15" x 14"	14"	14"



No. 200
Filter Register
Box

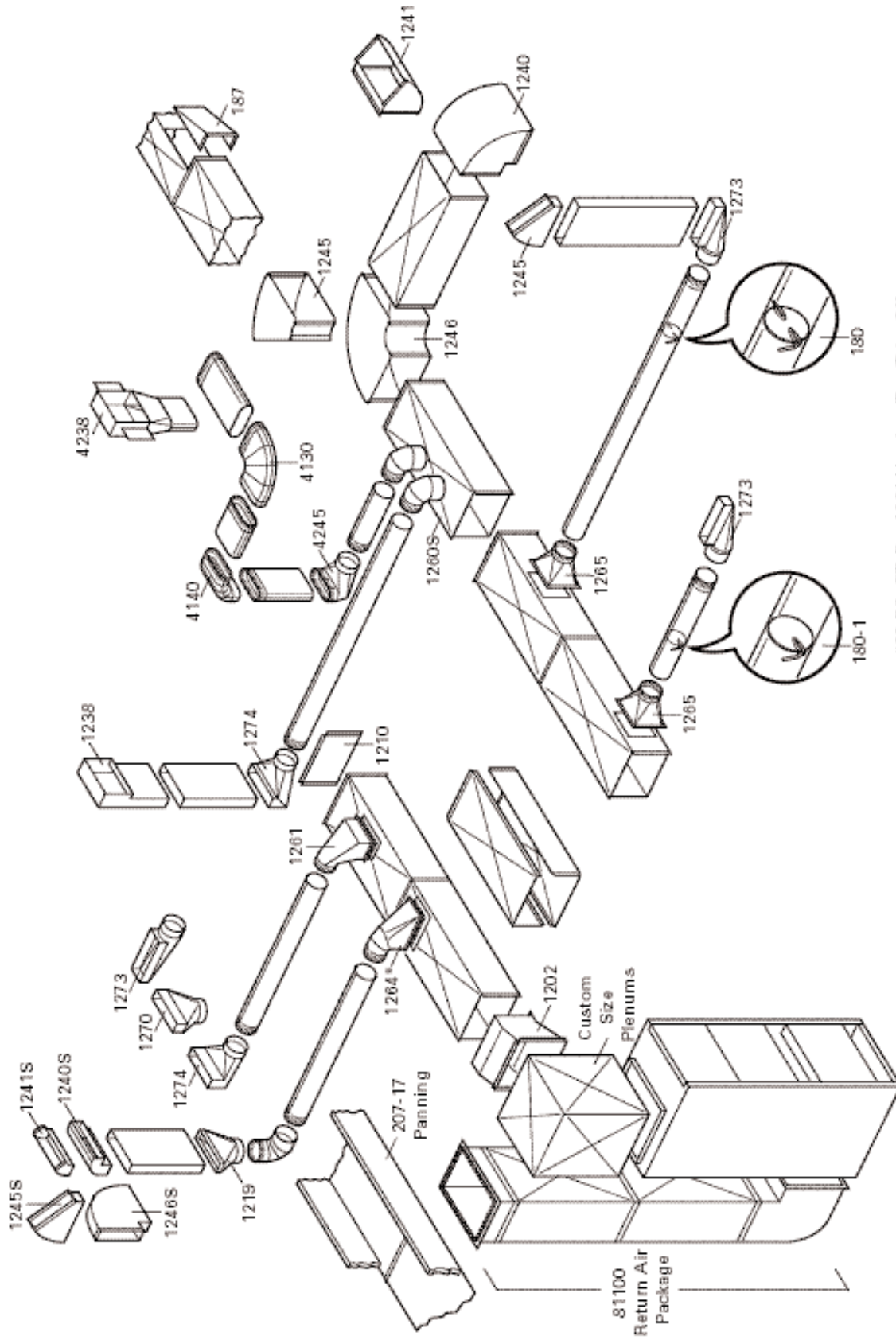
No. 200
Filter/Register Box

Box Size	Collar Size
20" x 12" x 14"	12"
20" x 14" x 14"	14"
14" x 14" x 12"	12"



Seal-Tite

EXTENDED PLENUM SYSTEM

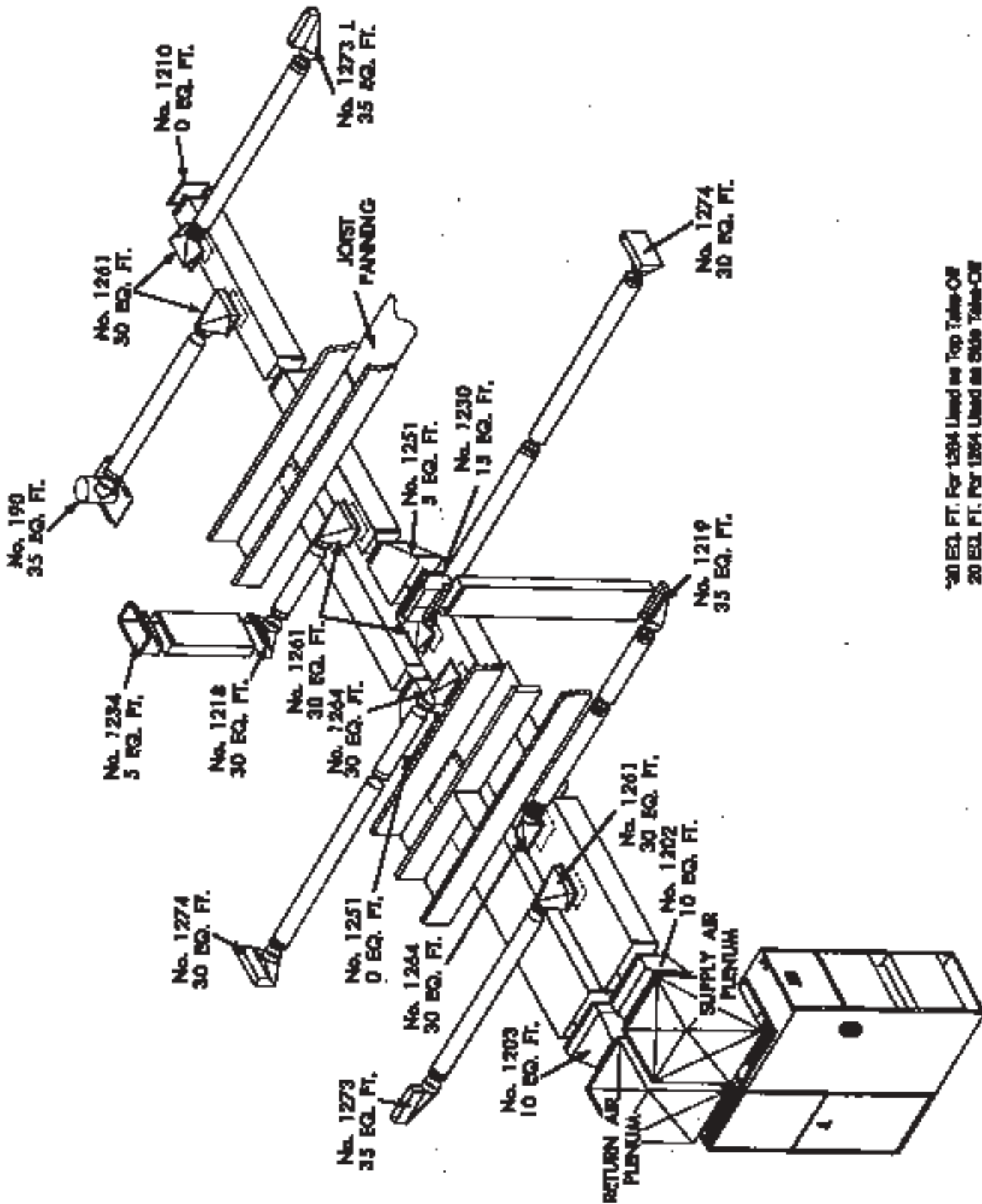


*30 EQ. FT. For 1264 Used as Top Take-Off
 20 EQ. FT. For 1264 Used as Side Take-Off

Seal-Tite duct, pipe, & fittings are designed for optimum air flow throughout the comfort zone.

Seal-Tite

REDUCTION SYSTEM



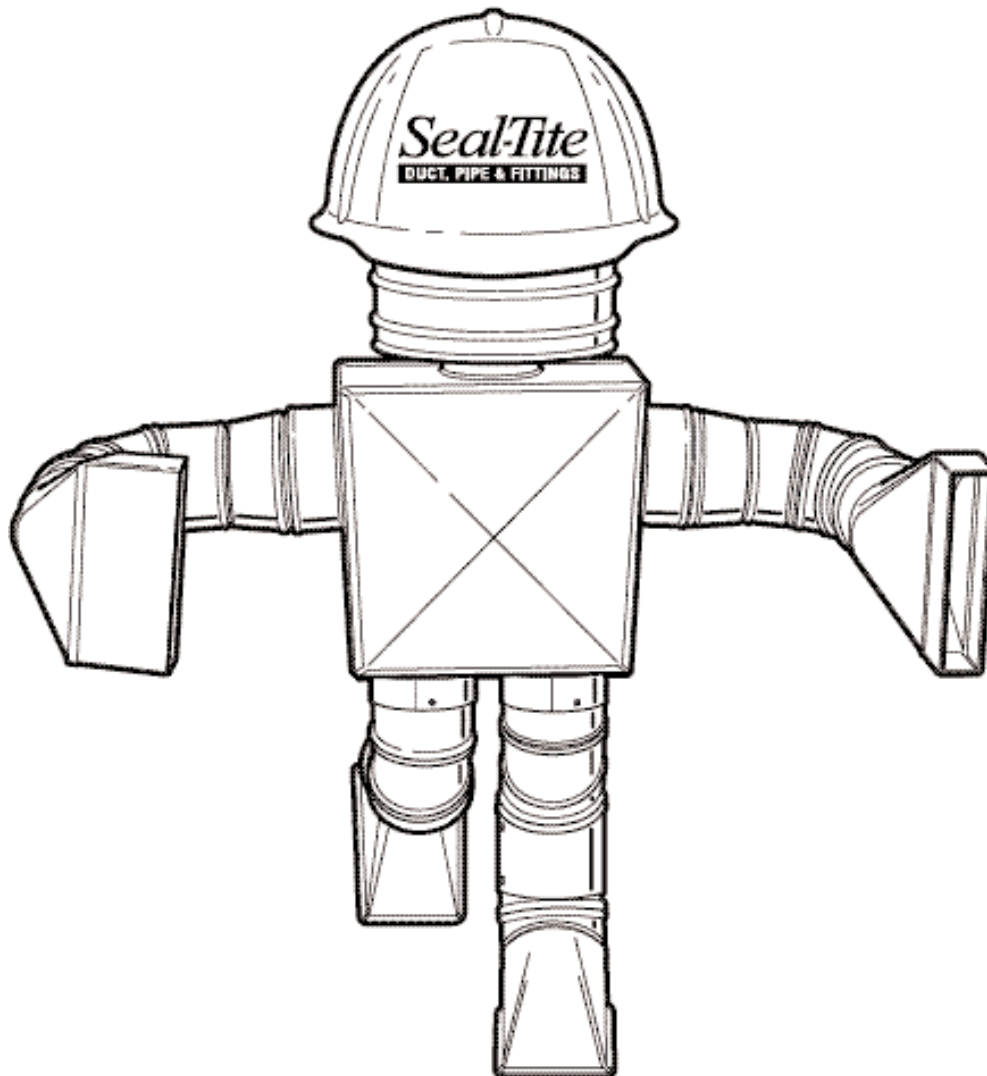
*30 EQ. FT. FOR 1264 USED IN TOP TAKE-OFF
 20 EQ. FT. FOR 1264 USED IN SIDE TAKE-OFF

Seal-Tite duct, pipe, & fittings are designed for optimum air flow throughout the comfort zone.

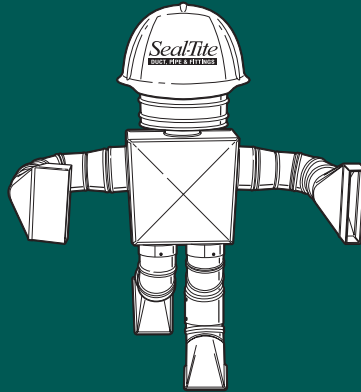
Seal-Tite

FRACTIONS & DECIMAL EQUIVALENTS

Fractions	Decimal Equivalent Inches	Fractions	Decimal Equivalent Inches	Fractions	Decimal Equivalent Inches	Fractions	Decimal Equivalent Inches
1/64	.0156	17/64	.2656	33/64	.5156	49/64	.7656
1/32	.0312	9/32	.2812	17/32	.5312	25/32	.7812
3/64	.0469	19/64	.2969	35/64	.5469	51/64	.7969
1/16	.0625	5/16	.3125	9/16	.5625	13/16	.8125
5/64	.0781	21/64	.3281	37/64	.5781	53/64	.8281
3/32	.0937	11/32	.3437	19/32	.5937	27/32	.8437
7/64	.1094	23/64	.3594	39/64	.6094	55/64	.8594
1/8	.1250	3/8	.3750	5/8	.6250	7/8	.8750
9/64	.1406	25/64	.3906	41/64	.6406	57/64	.8906
5/32	.1562	13/32	.4062	21/32	.6562	29/32	.9062
11/64	.1719	27/64	.4219	43/64	.6719	59/64	.9219
3/16	.1875	7/16	.4375	11/16	.6875	15/16	.9375
13/64	.2031	29/64	.4531	45/64	.7031	61/64	.9531
7/32	.2187	15/32	.4687	23/32	.7187	31/32	.9687
15/64	.2344	31/64	.4844	47/64	.7344	63/64	.9844
1/4	.2500	1/2	.5000	3/4	.7500	1.0	1.0000



Seal-Tite



IF IT FITS RIGHT,
LOOKS RIGHT
STAYS RIGHT
AND IS LEAK-TITE –
IT'S SEAL-TITE.

Seal-Tite[®]
DUCT, PIPE & FITTINGS



Seal-Tite[®]
DUCT, PIPE & FITTINGS

*America's Premier
Air Distribution
Systems*

120 Moore Rd.

Hillsboro, OH 45133

1-800-582-9025

Phone: (937) 393-4268

Fax: (937) 393-1262

Toll Free Fax: 1-800-543-4673

www.sealtitehvac.com