



Work



Tennis

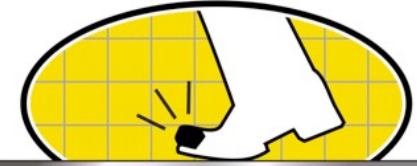


Baseball



Skates

Tuff Toe



HARD WORKING PROTECTION

HELPFUL HINTS

- Read all instructions before applying TUFF TOE and watch demo video at www.tufftoeboots.com
- Include shoe seams in coverage area for best adhesion.
- To build thick coat cut tip off mixer tip and **APPLY SLOWLY!!**
- **Let material thicken in mixer tip for 15 seconds before applying.**
- Apply steady even pressure on plunger. Don't rock back and forth.
- **For baseball cleats** wrap material underneath shoe 3/4" onto sole to avoid peeling.
- Tuff Toe will bond to itself for future applications. Follow all instructions again
- **Once cartridge is open use all material in cartridge within 60 days.**

PREPERATION

It is extremely important to prepare the area before applying TUFF TOE. It only takes a few minutes of effort to ensure durability.

- 1) Begin with a clean, dry shoe.
- 2) Stuff front half of shoe tightly with paper.
- 3) Outline the area you want to cover (see **Figure 1**)
- 4) **AGGRESIVELY** sand the surfaces to be coated. All dyes and oils should be sanded off all leather, rubber, and plastic surfaces. Spend at least 5-10 minutes sanding. All surfaces should be noticeably rough. (See **Fig. 2**)
- 5) Wipe rubber/plastic surfaces with mineral spirits, nail polish remover, or rubbing alcohol before applying Tuff Toe.



FIG. 1

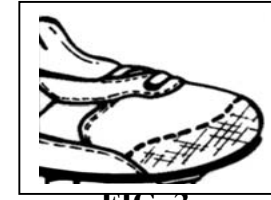


FIG. 2

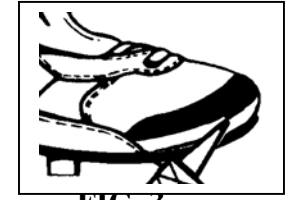


FIG. 3

APPLICATION

- 6) Cover your work area before beginning.
- 7) With prongs facing down, slide flat plastic grip over label to base of cartridge.
- 8) Remove cap. Insert the plunger into the back of TUFF TOE cartridge and dispense material **BEFORE attaching mixing tip**. Dispense material until both sides flow easily.
- 9) Place mixer tip on cartridge, push tip down and rotate into place.
- 10) Dispense a 2" line of material on piece of paper and discard. Let material rest in tip for 15 seconds before applying. Once material is pushed into the mixer tip, do not let it sit for more than 90 seconds or it will harden! Repeat steps 8 and 9 when switching to another tip.
- 11) Begin **SLOWLY** applying material at the top of the coverage area. Use a side-to-side dispensing motion to apply material. (See **Fig. 3**) **Dispense SLOWLY to control flow**. Let gravity help material flow down the application area to avoid dripping.
- 12) Put material on **VERY THICK** on hard wear areas.
- 13) If necessary use stick (circular motion) as little as possible smooth material where you want it within 90 seconds of application. After this time, touching the material will leave grooves or streaks.
- 14) Once finished, continue to rotate shoe for 2 to 3 minutes to avoid drips and runs. **Remove mixer tip, dispense material to clear both sides of cartridge, WIPE OFF CAP PRONGS BEFORE REPLACING CAP.** Use other mixer tips within 60 days for another application. If cartridge orifice is clogged use (paper clip end, pin, tack) to remove obstruction before using another mixer tip. Follow all instructions again for another application. Tuff Toe should fully cure in 24 hours.

QUESTIONS?? CALL 800-888-0802