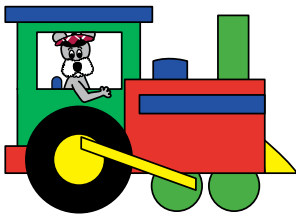
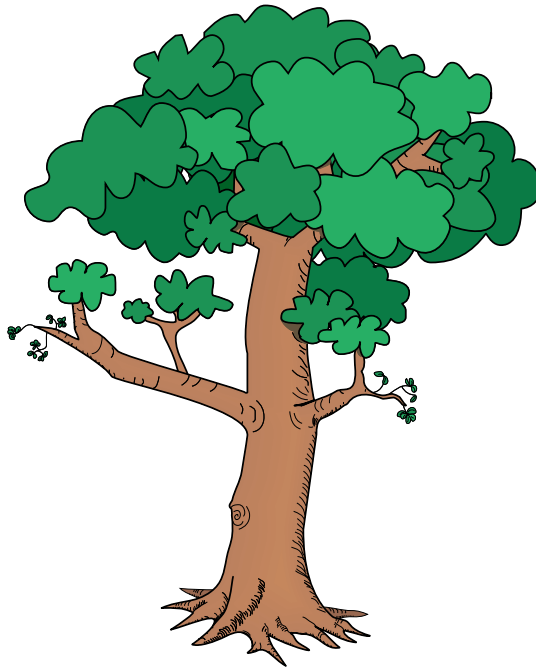


Directions Practice reading the blends.

ta ba ab ca at ca

ba ta at ca ta at

Circle the pictures that begin with *t*.



Directions Read the blends.

ta ca pa ba ca pa ta

Write the beginning sound of each picture.

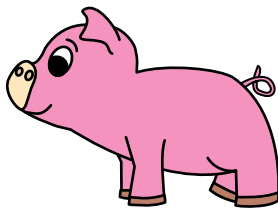
b c p t



\_\_\_\_\_

-----

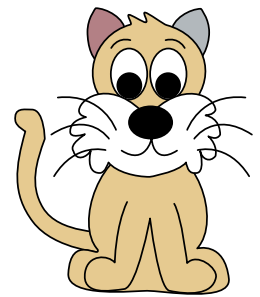
\_\_\_\_\_



\_\_\_\_\_

-----

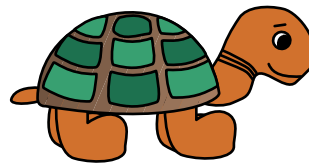
\_\_\_\_\_



\_\_\_\_\_

-----

\_\_\_\_\_



\_\_\_\_\_

-----

\_\_\_\_\_

Choose a word from the box to complete each sentence.

bat hat pan can cat

Pat has the \_\_\_\_\_.

Pat has the \_\_\_\_\_.

Pat has the \_\_\_\_\_.

Pat has the \_\_\_\_\_.

Match the words that have the same ending sound.

Tim

ham

man

mat

Sam

sap

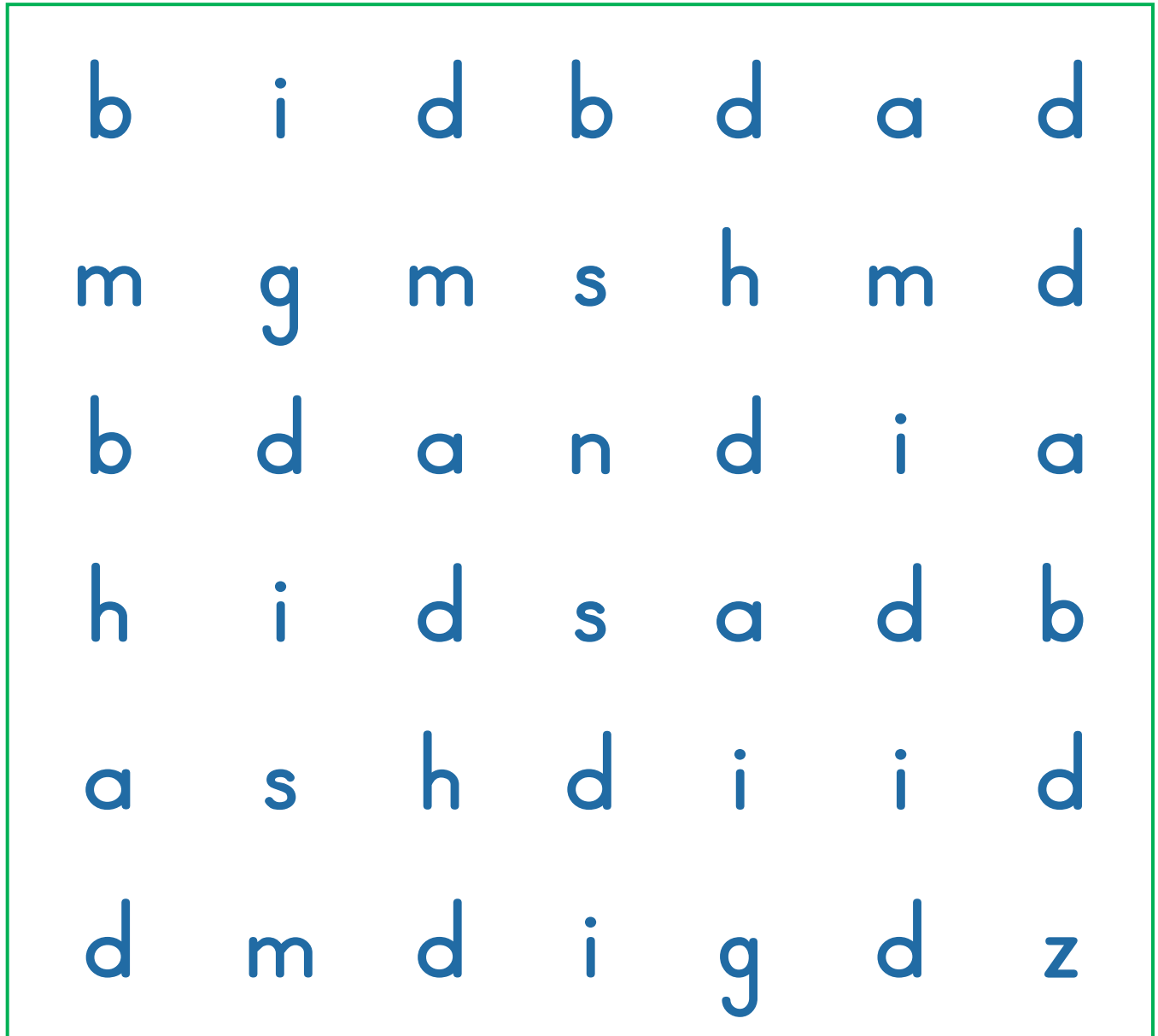
hat

him

map

tan

Find and circle the words in the puzzle.



hid      dad      sad      bid  
dig      mad      had      did

Fill in the ovals to answer the questions about the story *Cat Nap*.



Did the cat sag?

yes

no

Did the cat pass the cab?

yes

no

Did the cat nap on a cap?

yes

no

Did the cat sit on a dog?

yes

no

Spelling: Fill in *k* or *c*.

id

ot

ap

ill

it

iss

ob

an

Unit Test  
Part 2

Is a cat big

The cat is big

1. ud

2. um

3. at

4. ig

5. og

6. an

7. iss

8. du

9. ha

10. bi

11. sa

12. do